

STATE OF KANSAS
STATE CORPORATION COMMISSION
CONSERVATION DIVISION
200 Colorado Derby Building
Wichita, Kansas 67202

FORM CP-1
Rev. 2/89

WELL PLUGGING APPLICATION FORM
(File One Copy)

API NUMBER 15-189-20,618-0000 (of this well).

(This must be listed; if no API# was issued, please note drilling completion date.)

WELL OWNER/OPERATOR MOBIL OIL CORPORATION OPERATOR'S LICENSE NO. 5208

ADDRESS 2319 NORTH KANSAS, LIBERAL, KS 67901 PHONE # (316) 626-1160

LEASE (FARM) H. E. SHULER WELL NO. 3 WELL LOCATION APPROX C W/2 COUNTY STEVENS

SEC. 16 TWP. 31S RGE. 35W (E) or (W) TOTAL DEPTH 3070' PLUG BACK TD 3040'

Check One:

OIL WELL GAS WELL D & A SWD or INJ WELL DOCKET NO. _____

SURFACE CASING SIZE 8-5/8" SET AT 712' CEMENTED WITH 265 SACKS

CASING SIZE 5-1/2" SET AT 3070' CEMENTED WITH 575' SACKS

PERFORATED AT 2954' - 3015' O.A.

CONDITION OF WELL: GOOD POOR CASING LEAK JUNK IN HOLE

PROPOSED METHOD OF PLUGGING SEE ATTACHED PLUGGING PROCEDURE.

(If additional space is needed use back of form.)

IS WELL LOG ATTACHED TO THIS APPLICATION AS REQUIRED? *NO IS ACO-1 FILED? YES
(If not explain.) *Logs are on file with the KCC.

DATE AND HOUR PLUGGING IS DESIRED TO BEGIN ON APPROVAL

PLUGGING OF THIS WELL WILL BE DONE IN ACCORDANCE WITH K.S.A. 55-101 et. seq. AND THE RULES AND REGULATIONS OF THE STATE CORPORATION COMMISSION.

NAME OF REPRESENTATIVE AUTHORIZED TO BE IN CHARGE OF PLUGGING OPERATIONS:

DEAN MESSER/JOHN TANIGAWA PHONE # (316) 3356-7530

ADDRESS RURAL RT. 1, BOX 80M, ULYSSES, KS 67880

PLUGGING CONTRACTOR MIDWEST CASING & PULLING LICENSE NO. 6497

ADDRESS 506 ELLIS, SUBLETTE, KS 67877 PHONE # (316) 675-8349

PAYMENT OF THE PLUGGING FEE (K.A.R. 82-3-118) WILL BE GUARANTEED BY OPERATOR OR AGENT.

SIGNED: R. Kelly
(Operator or Agent)

DATE: 11-2-90

MOBIL OIL CORPORATION
Liberal Asset Team

Plug and Abandon Procedure

H.E. Shuler Number 3
Panoma - Council Grove
Sec 16 R31S T35W
Stevens County, Kansas

October 28, 1990

Total Depth: 3070 ft.
Plug Back Depth: 3040 ft (Cast Iron Bridge Plug)
Kelly Bushing: 3014 ft
Ground Level: 3006 ft

Casing Record: Surface: 8-5/8", 24 ppf, K-55, ST&C @ 712 ft
Cement Circulated.
Capacity: 0.0636 BBL/ft, 2.765 gal/ft

Production: 5-1/2", 14 ppf, K-55, ST&C @ 3070 ft
Cemented with 635 sx. No Circ.
Capacity: 0.0244 BBL/ft, 1.025 gal/ft

Production Zone: Council Grove: 2954' - 2960' with 2 spf
(gas prod.) 2963' - 2968' with 2 spf
2972' - 2995' with 2 spf
3011' - 3015' with 2 spf

Well History: Initially drilled and completed during November 1982. Acidized with 5700 gal of 15% HCl then frac'd with 228,000 lbs of 20/40 sand @ 120 BPM.

Well never produced gas and was temporarily abandoned in March of 1989.

This well needs to be plugged as soon as possible. The unit's replacement well, the H.E. Shuler #4, is almost ready for gas production.

Present Status: This well is presently TA'd and has all production equipment removed from location.

RECEIVED
STATE COMMISSION

NOV 5 1990

Procedure:

1. MIRU Ed and Don Eves of Midwest Casing Pulling Service, Sublette, Kansas.

2. MIRU Lathem water service (or other vendor depending upon truck availability).

3. RIH with 2-7/8" tubing to +/- 3030 ft. Pump 12 sacks of cotton seed hulls with 25 sacks of cement. Displace cement-seed mixture with 26.5 bbls of mud. Please see mud and cement specifications at the end of this procedure.

4. PDDH with 2-7/8" tubing to +/- 1710 ft (lay down 44 joints). Pump 25 sacks of cement and displace mud to surface. This cement will protect the Stone Corral Anhydride.

5. PDDH with 2-7/8" tubing and fill hole with water. Pressure test cement to +/- 700 lbs to insure that cement is isolating zones. If cement does not hold, consult with Operations Engineering @ 356-7530 or @ 544-5526 (Home:624-7912). SWION.

6. Shoot off 5-1/2" production casing @ +/- 500 feet using casing cutting tool. Attempt to pull casing free. If free point is not found at 500 feet, RIH with casing cutting tool and shoot at 400 feet. Again, attempt to pull casing free. If casing is still in hole, move up at 100 foot increments and repeat shoot-pull procedure.

NOTE: The remaining procedure assumes that the production casing was free at +/- 500 feet. Adjustments to this procedure will be necessary if casing was cut at another depth. These changes must incorporate a 40 sack cement plug to seal off the top of the 5-1/2" production casing (left in the hole) as well as a a 12 sack cement plug from 5 feet to 38 feet.

7. PDDH with 5-1/2" 1 joint. Pump 40 sacks of cement and displace with 11 bbls of mud.

8. PDDH completely with 5-1/2" casing. This leaves 38 feet of empty 8-5/8" surface casing.

RECORDED
STATE OIL & GAS COMMISSION

NOV 5 1990

9. Pour 11 sacks of cement in hole. Cement should fill 8-5/8" surface casing to 5 feet below ground level.
10. Cut off 8-5/8" casing 5 feet below ground level and weld on iron cap.
11. Clean location and rig down.

Mud and Cement Specifications:

CEMENT: Pozmix 50/50 A cement with 2% Bentonite
1.26 cubic feet per sack
6.5 gal water per sack
14.15 pounds per gallon
4 hours thickening time

MUD: Bentonite Gel
9 ppg
36 Marsh funnel viscosity

RECEIVED
STATE COMMISSION

NOV 5 1990

JJTANIGAWA/jjt

JJ Tanigawa

H.E. Shuler, # 3 Plug and Abandon Procedure

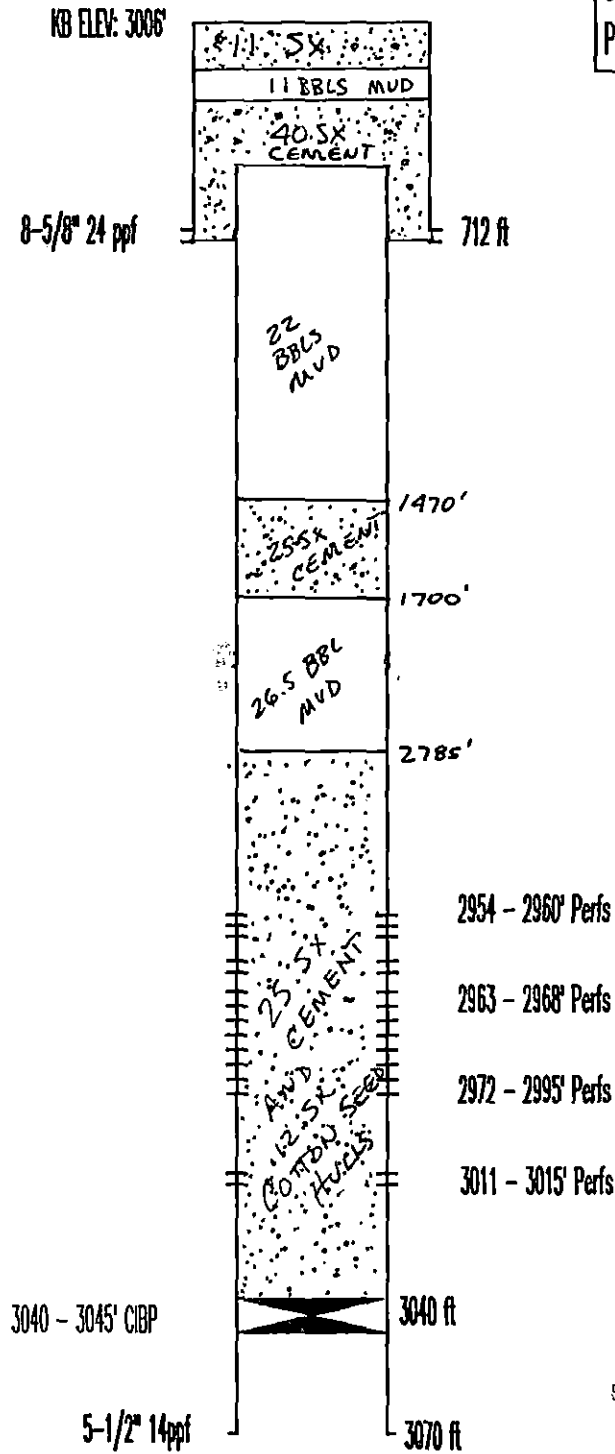
JJ Tanigawa

Panama Gas Field
Council Grove Formation

H. E. Shuler No. 3
Sec 15 - T31S - R35W
PROPOSED COMPLETION

John J. Tanigawa
November 1, 1990

Surface Casing: Cemented with 265 sx Circulated
Production Casing: Cemented with 575 sx. Not Cir



RECEIVED
STATE COMMISSION

NOV 5 1990

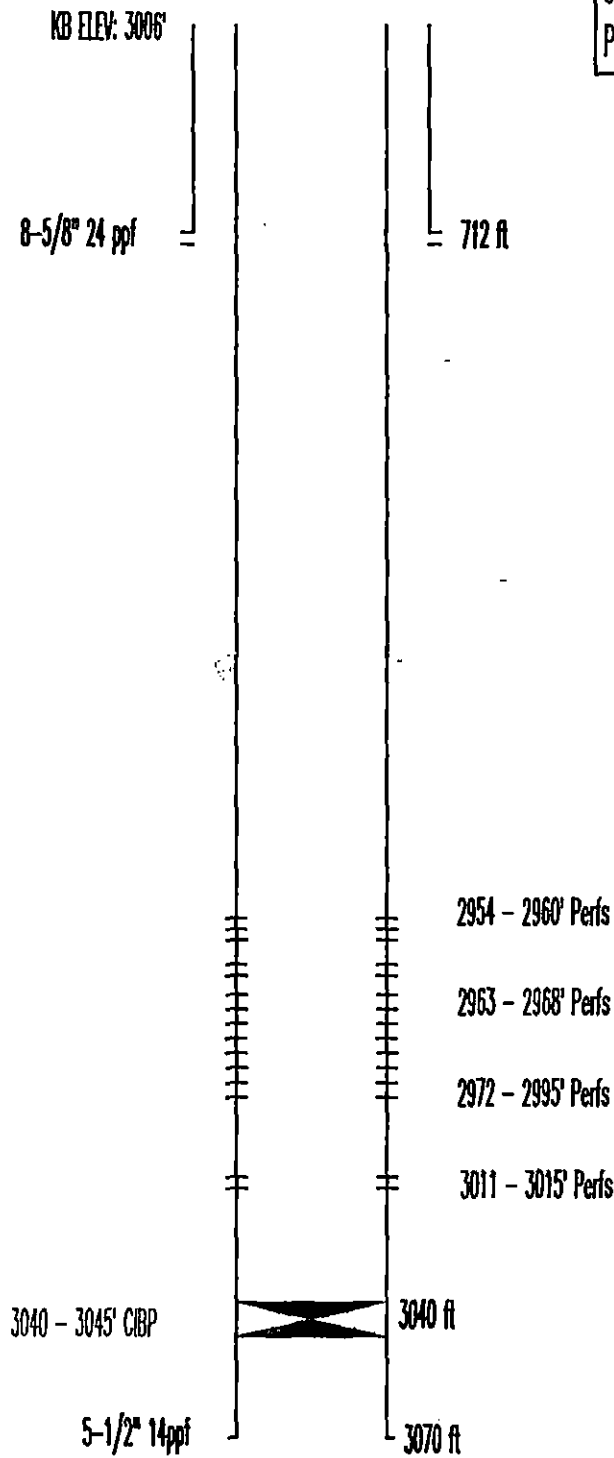
Mobil - PRISM

Panama Gas Field
Council Grove Formation

H. E. Shuler No. 3
Sec 15 - T31S - R35W
PRESENT COMPLETION

John J. Tanigawa
November 1, 1990

Surface Casing: Cemented with 265 sx Circulated
Production Casing: Cemented with 575 sx. Not Cir



RECEIVED
STATE COMMISSION

NOV 5 1990

Mobil - PRISM

PBTD: 3040'
TD: 3070'



Kansas Corporation Commission

MIKE HAYDEN GOVERNOR
KEITH R. HENLEY CHAIRMAN
RICH KOWALEWSKI COMMISSIONER
JACK SHRIVER COMMISSIONER
JUDITH MCCONNELL EXECUTIVE DIRECTOR
FRANK A. CARO, JR. GENERAL COUNSEL

CONSERVATION DIVISION
SHARI FEIST ALBRECHT, DIRECTOR
200 Colorado Derby Bldg.
202 W. 1st Street
Wichita, KS 67202-1286
(316) 263-3238

NOTICE OF RECEIPT OF
WELL PLUGGING APPLICATION

November 7, 1990

Mobil Oil Corporation
2319 North Kansas
Liberal, KS 67901

H.E. Shuler #3
C W/2 16-31-35W
Stevens County, KS
API No. 15-189-20,618

Gentlemen:

This letter is to notify you that the Conservation Division is in receipt of your plugging proposal, form CP-1, for the above-captioned well.

Your CP-1 has been reviewed by the Conservation Division central office for completeness and to verify license numbers. The plugging proposal will now be forwarded to the district office listed below for review of your proposed method of plugging. Please contact the district office for approval of your proposed plugging method at least five (5) days before plugging the well, pursuant to K.A.R. 82-3-113(b). Failure to do so is punishable by an administrative penalty of up to \$1000.

It has recently come to my attention that the form CP-1 has been filed by operators other than the owner or operator of the well and without the consent of the owner or operator. The Conservation Division's review of form CP-1, either in the central or district office, does not include an inquiry into well ownership or the filing operator's legal right to plug the well.

This notice in no way constitutes authorization to plug the above-captioned well by persons not having legal rights of ownership or interest in the well. This notice is void after ninety (90) days from the above date.

Sincerely,

A handwritten signature in cursive script that reads "David P. Williams".
David P. Williams
Production Supervisor

District: #1, 304 W. McArtor
Dodge City, KS 67801
(316) 225 - 6760