

STATE CORPORATION COMMISSION OF KANSAS  
OIL & GAS CONSERVATION DIVISION

WELL COMPLETION OR RECOMPLETION FORM  
ACO-1 WELL HISTORY

DESCRIPTION OF WELL AND LEASE

Operator: License # 9783  
Name Santa Fe Minerals, a Division of  
Address Santa Fe International Corp.  
13455 Noel Rd., Suite 1100  
City/State/Zip Dallas, Texas 75240

Purchaser Oklahoma Gas Pipeline Co.

Operator Contact Person Jim LaFeyers  
Phone (214) 701-7588

Contractor: License # 05382  
Name Cheyenne Drilling Co.

Wellsite Geologist Gayle Tapp  
Phone (918) 561-7206

Designate Type of Completion

- New Well  Re-Entry  Workover
- Oil  SWD  Temp Abd
- Gas  Inj  Delayed Comp.
- Dry  Other (Core, Water Supply etc.)

If ONWO: old well info as follows:  
Operator  
Well Name  
Comp. Date Old Total Depth

WELL HISTORY

Drilling Method:  
 Mud Rotary  Air Rotary  Cable  
5/7/88 5/12/88 WOCT  
Spud Date Date Reached TD Completion Date  
2840  
Total Depth PBD

Amount of Surface Pipe Set and Cemented at 7.26 feet  
Multiple Stage Cementing Collar Used?  Yes  No  
If yes, show depth set.....feet  
If alternate 2 completion, cement circulated  
from.....feet depth to.....w/.....SX cmt  
N/I

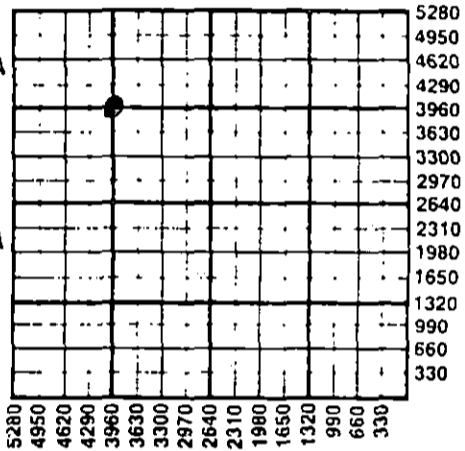
API NO. 15-175-21009-00-00  
County Seward  
N W 4 Sec. 32 Twp. 34 Rge. 34  East  West

3967 Ft North from Southeast Corner of Section  
3935 Ft West from Southeast Corner of Section  
(Note: Locate well in section plat below)

Lease Name Blanch Engel Well # 2  
Field Name Hugoton INFILL

Producing Formation Chase

Elevation: Ground 2940 KB 2949  
Section Plat



RECEIVED  
STATE CORPORATION COMMISSION  
MAY 31 1988  
CONSERVATION DIVISION  
Wichita, Kansas

WATER SUPPLY INFORMATION

Disposition of Produced Water:  Disposal  Repressuring  
Docket #

Questions on this portion of the ACO-1 call:  
Water Resources Board (913) 296-3717

Source of Water:  
Division of Water Resources Permit #  
 Groundwater.....Ft North from Southeast Corner (Well) .....Ft West from Southeast Corner of Sec Twp Rge  East  West  
 Surface Water.....Ft North from Southeast Corner (Stream, pond etc).....Ft West from Southeast Corner Sec Twp Rge  East  West  
 Other (explain) Hauled in.....  
(purchased from city, R.W.D. #)

INSTRUCTIONS: This form shall be completed in duplicate and filed with the Kansas Corporation Commission, 200 Colorado Derby Building, Wichita, Kansas 67202, within 90 days after completion or recompletion of any well. Rule 82-3-130 and 82-3-107 apply.  
Information on side two of this form will be held confidential for a period of 12 months if requested in writing and submitted with the form. See rule 82-3-107 for confidentiality in excess of 12 months.  
One copy of all wireline logs and drillers time log shall be attached with this form. Submit CP-4 form with all plugged wells. Submit CP-111 form with all temporarily abandoned wells.

All requirements of the statutes, rules and regulations promulgated to regulate the oil and gas industry have been fully complied with and the statements herein are complete and correct to the best of my knowledge.

Signature James B. LaFeyers  
Title Engineering Technician Date 05/24/88

Subscribed and sworn to before me this 26th day of May 1988  
Notary Public Barbara D. Anderson  
Date Commission Expires

K.C.C. OFFICE USE ONLY  
 Letter of Confidentiality Attached  
 Wireline Log Received  
 Drillers Timelog Received  
Distribution  
 KCC  SWD/Rep  NGPA  
 KGS  Plug  Other (Specify)  
5-31-88

BARBARA D. ANDERSON  
Notary Public State of Texas  
My Commission Expires June 29, 1989

Sec. 32 Twp. 34 Rge. 34

SIDE TWO

Operator Name ..... Santa Fe Minerals ..... Lease Name ..... Blanche Engel ..... Well # ..... 2

Sec. 32 ..... Twp. 34 ..... Rge. 34 .....  East  West ..... County ..... Seward .....

WELL LOG

INSTRUCTIONS: Show important tops and base of formations penetrated. Detail all cores. Report all drill stem tests giving interval tested, time tool open and closed, flowing and shut-in pressures, whether shut-in pressure reached static level, hydrostatic pressures, bottom hole temperature, fluid recovery, and flow rates if gas to surface during test. Attach extra sheet if more space is needed. Attach copy of log.

Drill Stem Tests Taken  Yes  No  
 Samples Sent to Geological Survey  Yes  No  
 Cores Taken  Yes  No

Formation Description  
 Log  Sample

Name	Top	Bottom
Blaine Gypsum	986	
Glorietta	1136	
Tubb	1621	
Red Cave	1689	
Wellington	2229	
Chase Group	2636	

RELEASED

JUN 12 1989

FROM CONFIDENTIAL

CASING RECORD <input type="checkbox"/> New <input type="checkbox"/> Used							
Report all strings set-conductor, surface, intermediate, production, etc.							
Purpose of String	Size Hole Drilled	Size Casing Set (in O.D.)	Weight Lbs/Ft.	Setting Depth	Type of Cement	#Sacks Used	Type and Percent Additives
Surface	12-1/4	8-5/8	24	726	Class C	346	
Production	7-7/8	5-1/2	15.5	2830	Class C Surfill	450 130	

PERFORATION RECORD		Acid, Fracture, Shot, Cement Squeeze Record	
Shots Per Foot	Specify Footage of Each Interval Perforated	(Amount and Kind of Material Used)	Depth
.....	.....	.....	.....
.....	.....	.....	.....
.....	.....	.....	.....
.....	.....	.....	.....

TUBING RECORD	Size	Set At	Packer at	Liner Run	<input type="checkbox"/> Yes <input type="checkbox"/> No
Date of First Production	Producing Method <input type="checkbox"/> Flowing <input type="checkbox"/> Pumping <input type="checkbox"/> Gas Lift <input type="checkbox"/> Other (explain).....				

Estimated Production Per 24 Hours	Oil Bbls	Gas MCF	Water Bbls	Gas-Oil Ratio	Gravity
				CFPB	

METHOD OF COMPLETION

Production Interval

Disposition of gas:  Vented  Open Hole  Perforation  
 Sold  Other (Specify) .....  
 Used on Lease  Dually Completed .....  
 Commingled .....

CONFIDENTIAL

Operator Name Santa Fe Minerals Lease Name Blanche Engel Well # 2

Sec 32 Twp 34 Rge 34 East West County Seward RELEASED

MAR 05 1990

WELL LOG

INSTRUCTIONS: Show important tops and base of formations penetrated. Detail all cores. Report all stem tests giving interval tested, time tool open and closed, flowing and shut-in pressures, whether shut-in pressure reached static level, hydrostatic pressures, bottom hole temperature, fluid recovery, and flow rates if gas to surface during test. Attach extra sheet if more space is needed. Attach copy of log.

FROM CONFIDENTIAL

Drill Stem Tests Taken [ ] Yes [X] No
Samples Sent to Geological Survey [ ] Yes [X] No
Cores Taken [ ] Yes [X] No

Formation Description [X] Log [ ] Sample

Table with 3 columns: Name, Top, Bottom. Rows include Blaine Gypsum, Glorietta, Tubb, Red Cave, Wellington, Chase Group.

CONFIDENTIAL

CASING RECORD, PERFORATION RECORD, TUBING RECORD, Date of First Production, Producing Method, Estimated Production Per 24 Hours

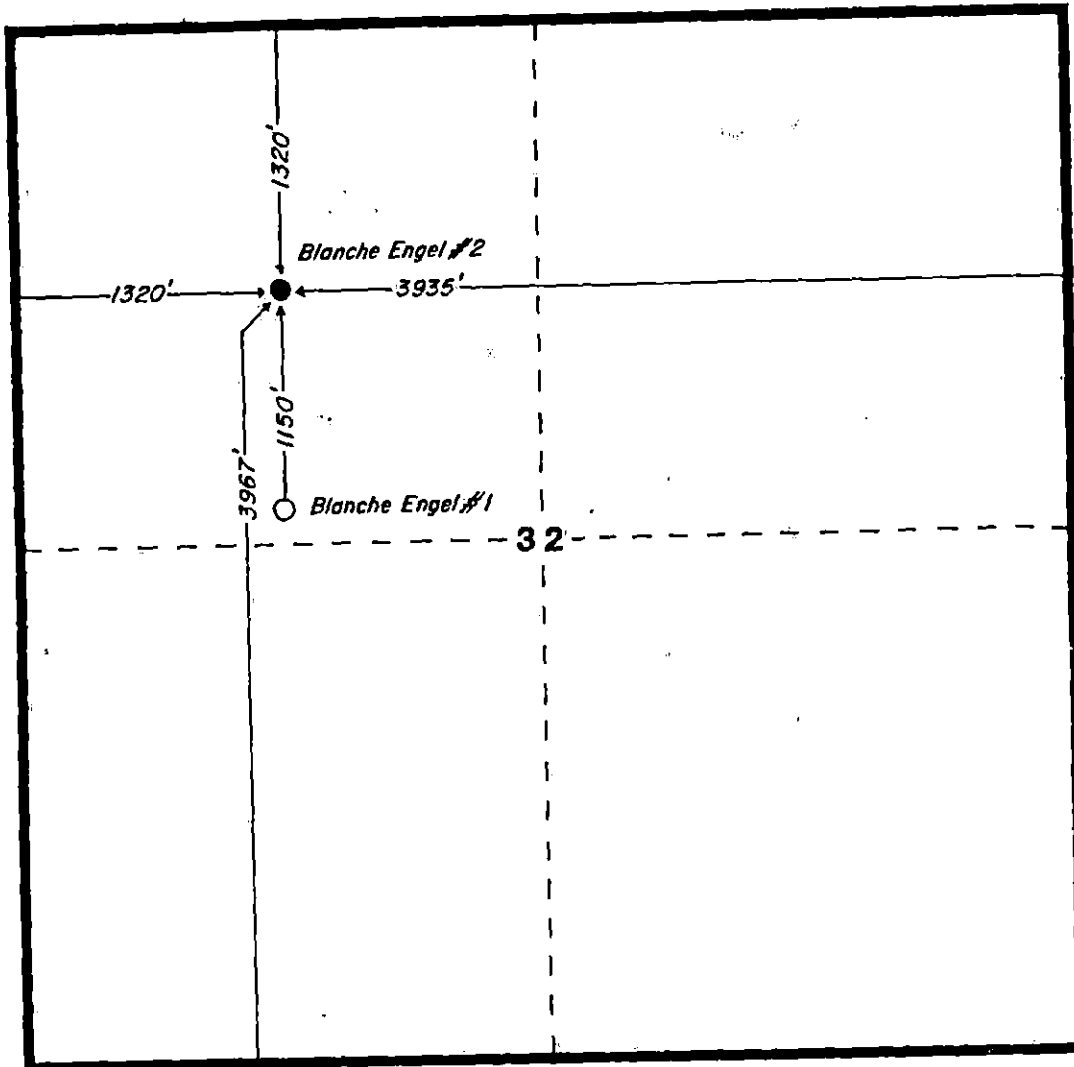
METHOD OF COMPLETION Production Interval

Disposition of gas: [ ] Vented [X] Sold [ ] Used on Lease [ ] Open Hole [X] Perforation [ ] Other (Specify) 2637-2775 [ ] Dually Completed [ ] Commingled

CONFIDENTIAL

RELEASED

County SEWARD State KANSAS MAR 0 5 1990  
Township 34S Range 34W Section 32 FROM CONFIDENTIAL



**SF Santa Fe Minerals, Inc.**  
A DIVISION OF SANTA FE INTERNATIONAL CORPORATION  
1001 West 10th Street, Suite 1000, Santa Fe, New Mexico 87505

**LOCATION PLAT**

DALLAS		Drawn By:	Date:
OF 01	OF 01	FILE NO.	
DATE	DRAWN		
CREATED BY	NO. 01	FILE NO.	

RECEIVED  
STATE CORPORATION COMMISSION

AUG 24 1989

CONSERVATION DIVISION  
Wichita, Kansas

From the SW corner of T34S-R34W, go 5 miles West on paved road, thence 1 mile North to the Southeast Corner of Section 32, T34S-R34W.

**CERTIFICATE:**

VN

I, Roger R. Rowe a Registered Land Surveyor and an authorized agent of Topographic Land Surveyors, do hereby certify that the above described well location was surveyed and staked on the ground as shown herein.

Roger R. Rowe

Kansas Reg. No. 839



RELEASED

MAR 05 1990

### TOPOGRAPHIC LAND SURVEYORS

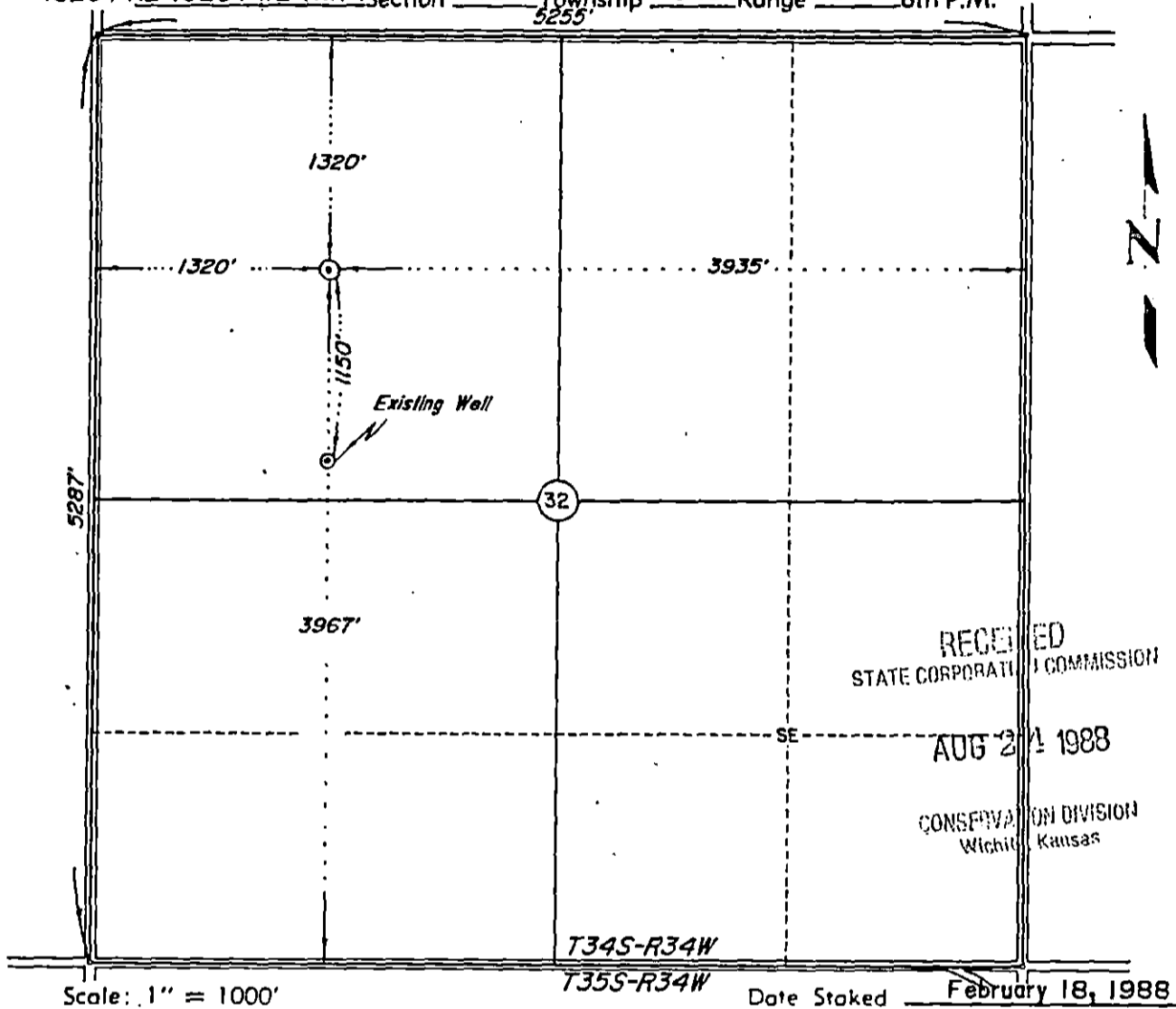
Surveying and Mapping for the Energy Industry  
1008 E 17TH ST • HAYS, KANSAS 67601

TELEPHONES: LOCAL (913) 625-2683 • OKLA WATS (800) 522-4273 • OUT OF STATE WATS (800) 654-3219

FROM CONFIDENTIAL

SEWARD County, Kansas

1320'FNL-1320'FWL-NW/4 Section 32 Township 34S Range 34W 6th P.M.  
5255'



This location has been very carefully staked on the ground according to the best official survey records, maps, and photographs available to us, but its accuracy is not guaranteed.

Review this plat and notify us immediately of any possible discrepancy.

Operator: SANTA FE MINERALS

ELEVATION:  
2940' Gr. of Stake

Lease Name: Blanche Engel Well No.: 2

Topography & Vegetation Location fell in weed field.

Good Drill Site? Yes Reference Stakes or Alternate Location none  
Stakes Set none

Best Accessibility to Location From West.

Distance & Direction  
from Hwy Jct or Town From Jct. of US 54 & Western Ave. at the Southwest Corner of Liberal, go 5 miles West on paved road, thence 1 mile North to the Southeast Corner of Section 32, T34S-R34W.

#### CERTIFICATE:

VN

I, Roger R. Rowe a Registered Land Surveyor and an authorized agent of Topographic Land Surveyors, do hereby certify that the above described well location was surveyed and staked on the ground as shown herein.

Roger R. Rowe

Kansas Reg. No. 839

