

STATE OF KANSAS  
STATE CORPORATION COMMISSION  
CONSERVATION DIVISION  
200 Colorado Derby Building  
Wichita, Kansas 67202

FORM CP-1  
Rev. 6/4/84

WELL PLUGGING APPLICATION FORM  
(File One Copy)

API NUMBER 15-025-20,509-6000 (of this well) 2/88  
(This must be listed; if no API# was issued, please note drilling completion date.)

LEASE OPERATOR MESA OPERATING LIMITED PARTNERSHIP OPERATORS LICENSE NO. 04824

ADDRESS P.O. BOX 2009, AMARILLO, TEXAS 79189 PHONE # (806) 378-1000

LEASE (FARM) SEACAT WELL NO. 9-19 WELL LOCATION 2400 FSL COUNTY Clark

SEC. 19 TWP. 31S RGE. 21  or  TOTAL DEPTH 5300' 4950' FEL PLUG BACK TO 5205'

Check One:

OIL WELL  GAS WELL \_\_\_\_\_ D & A \_\_\_\_\_ SWD or INJ WELL \_\_\_\_\_ DOCKET NO. \_\_\_\_\_

SURFACE CASING SIZE 8 5/8" SET AT 667' CEMENTED WITH 700 SACKS

CASING SIZE 4 1/2" SET AT 5277' CEMENTED WITH 220 SACKS

PERFORATED AT 5109' - 5124'

CONDITION OF WELL: GOOD  POOR \_\_\_\_\_ CASING LEAK \_\_\_\_\_ JUNK IN HOLE \_\_\_\_\_

OPERATOR'S SUGGESTED METHOD OF PLUGGING THIS WELL CIBP @ 5000' w/2 sx cement on top; load

hole w/9.2# mud, cut pipe @ free point; circulate mud & pump 50 sx cement; pull to 720',

circulate mud and pump 50 sx cement, pull to 33', pump 10 sx 33' - 0'. Cut off wellhead.

(If additional space is needed use back of form)

IS WELL LOG ATTACHED TO THIS APPLICATION AS REQUIRED? Yes IS ACO-1 FILED? 4-27-82  
(If not, explain)

DATE AND HOUR PLUGGING IS DESIRED TO BEGIN June 1, 1987

PLUGGING OF THIS WELL WILL BE DONE IN ACCORDANCE WITH K.S.A. 55-101 et seq AND THE RULES AND REGULATIONS OF THE STATE CORPORATION COMMISSION.

NAME OF COMPANY REPRESENTATIVE AUTHORIZED TO BE IN CHARGE OF PLUGGING OPERATIONS:

E. E. Hance PHONE # (806) 378-4876

ADDRESS P.O. Box 2009, Amarillo, Texas 79189

PLUGGING CONTRACTOR Pool Well Servicing Co. LICENSE NO. 7874 12/87

ADDRESS P.O. Box 998, El Reno, Oklahoma 73036 PHONE # (405) 262-6262

PAYMENT WILL BE GUARANTEED BY OPERATOR OR AGENT SIGNED: [Signature]

RECEIVED  
STATE CORPORATION COMMISSION  
MAY 14 1987  
Operator or Agent  
STATE CORPORATION COMMISSION

DATE 5/12/87

xc: KCC (0+1), Prod Records, Reg, Expl, Wichita, Kansas, Acctg, Drlg

CONSERVATION DIVISION  
Wichita, Kansas

**Schlumberger**

**SIMULTANEOUS  
COMPENSATED NEUTRON  
FORMATION DENSITY**

COUNTY CLARK  
 FIELD LEXINGTON  
 LOCATION SEC. 19-31S-21W  
 WELL SEACAT NO. 9-19  
15-025-70509-000  
 COMPANY MESA PETROLEUM CO.

COMPANY MESA PETROLEUM COMPANY  
 WELL SEACAT NO. 9-19  
 FIELD LEXINGTON  
 COUNTY CLARK STATE KANSAS  
 LOCATION 2400' PSL & 333' FWL  
 API SERIAL NO. 19 SEC. 31S TWP. 21W RANGE MI.  
 Other Services: DLI./SPL-GR  
ML.  
BHC-GR.  
CWI.

Permanent Datum: GROUND LEVEL; Elev.: 2061  
 Log Measured From K.B.; 10 Ft. Above Perm. Datum  
 Drilling Measured From K.B. Elev.: KB, 2071  
D.F., 2070  
G.L., 2061

Date	9-4-81	Run No.	ONE
Depth-Driller	5300	Depth-logger	5301
Bm. Log Interval	5300	Top Log Interval	4000
Casing-Driller	8 5/8 @ 677	Casing-logger	677
Bit Size	12 1/4-7 7/8	Type Fluid in Hole	PREMIX
Dens.	9.3	Visc.	80
pH	10.0	Fluid Loss	10.0 ml
Source of Sample	CIRCULATED	Rm @ Meas. Temp.	.382 @ 76 F
Rmf @ Meas. Temp.	.502 @ 73 F	Rmc @ Meas. Temp.	.568 @ 73 F
Source: Rmf	MEAS	Rmc	MEAS
Rm @ BHT	.253 @ 118 F	Rmc @ BHT	.253 @ 118 F
Circulation Stopped	0600	Logger on Bottom	1230

RECEIVED  
 DEC 14 1981  
 AMARILLO PRODUCTION

The well name, location and borehole reference data were furnished by the customer.

Der No.	ONE	REMARKS:	Type Log	Depth
	238820	INTEGRATED HOLE VOLUME:		
	FULL	SMALL PIP = 10 CU. FT.		
	M CL.	LARGE PIP = 100 CU. FT.		
	M.			

**EQUIPMENT NUMBERS-**

NOM-BB 603      SGC-JC 2649      PGC-G 218      PGS-E 429  
 PDH-E 182      SFT-106      GSR-B 3105      CNC-A 1032  
 CNB-AB 699      NSR-F 801

ALL INTERPRETATIONS ARE OPINIONS BASED ON INFERENCES FROM ELECTRICAL OR OTHER MEASUREMENTS AND WE CANNOT, AND DO NOT GUARANTEE THE ACCURACY OR CORRECTNESS OF ANY INTERPRETATIONS, AND WE SHALL NOT, EXCEPT IN THE CASE OF GROSS OR WILLFUL NEGLIGENCE ON OUR PART, BE LIABLE OR RESPONSIBLE FOR ANY LOSS, COSTS, DAMAGES OR EXPENSES INCURRED OR SUSTAINED BY ANYONE RESULTING FROM ANY INTERPRETATION MADE BY ANY OF OUR OFFICERS, AGENTS OR EMPLOYEES. THESE INTERPRETATIONS ARE ALSO SUBJECT TO OUR GENERAL TERMS AND CONDITIONS AS SET OUT IN OUR CURRENT PRICE SCHEDULE.

**FILE**

101

CAL (IN )	16.00	NPHI ( )	0.7000	0.3000
GR (GAPI)	150.0	DPHI ( )	0.3000	-0.100
GR (GAPI)	300.0	NPHI ( )	0.3000	RECEIVED -0.100

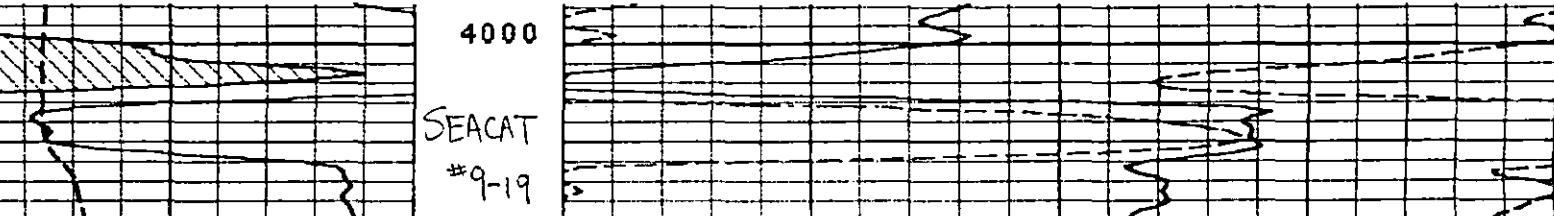
STATE CORPORATION COMMISSION

**FILE**

6

MAY 14 1987

CONSERVATION DIVISION  
 Wichita, Kansas



State of Kansas



Mike Hayden  
Keith R. Henley  
Rich Kowalewski  
Margalee Wright  
Judith A. McConnell

Governor  
Chairman  
Commissioner  
Commissioner  
Executive Director

## State Corporation Commission

### CONSERVATION DIVISION

(Oil, Gas and Water)  
200 Colorado Derby Building  
202 West 1st Street  
WICHITA, KANSAS 67202-1286

THIS NOTICE

AUG 14 '87

EXPIRES

May 14, 1987

WELL PLUGGING NOTICE

15-025-20509-0000

Seacat #9-19  
2400' FSL 4950' FEL  
Sec. 19-31S-21W  
Clark County

Mesa Operating Limited Partnership  
P. O. Box 2009  
Amarillo, TX 79189

Gentlemen:

This is your notice to plug the above subject well in accordance with the Rules and Regulations of the State Corporation Commission.

This notice is void after ninety (90) days from the above date.

Sincerely,

Shari Feist  
Acting Director  
State Corporation Commission

Please contact the district office to review your suggested method of plugging  
DIST. #1 302 West McArtor, Dodge City, KS 67801 (316) 225-6760  
five days prior to plugging the well (KAR-82-3-113).