

STATE CORPORATION COMMISSION OF KANSAS  
OIL & GAS CONSERVATION DIVISION

WELL COMPLETION OR RECOMPLETION FORM  
ACO-1 WELL HISTORY

DESCRIPTION OF WELL AND LEASE

Operator: license # 5208  
name Mobil Oil Corporation  
address P. O. Box 5444  
City/State/Zip Denver, CO 80217-5444

Operator Contact Person J. L. Douglass  
Phone 303/298-2047

Contractor: license # 8154  
name Lanex, Inc.

Wellsite Geologist Porter Mitchell  
Phone 303/298-2638

PURCHASER Northern Natural Gas

Designate Type of Completion  
 New Well  Re-Entry  Workover  
directionally drilled  
 Oil  SWD  Temp Abd  
 Gas  Inj  Delayed Comp.  
 Dry  Other (Core, Water Supply etc.)

OWWO: old well info as follows:  
Operator \_\_\_\_\_  
Well Name \_\_\_\_\_  
Comp. Date \_\_\_\_\_ Old Total Depth \_\_\_\_\_

WELL HISTORY

Drilling Method:  Mud Rotary  Air Rotary  Cable  
1/1/84 2/7/84 5/10/84  
Spud Date Date Reached TD Completion Date  
6380' 6355'  
Total Depth PBTD

Amount of Surface Pipe Set and Cemented at 1760 feet

Multiple Stage Cementing Collar Used?  Yes  No

If Yes, Show Depth Set \_\_\_\_\_ feet

Alternate 2 completion, cement circulated  
from \_\_\_\_\_ feet depth to \_\_\_\_\_ w/ \_\_\_\_\_ SX cmt

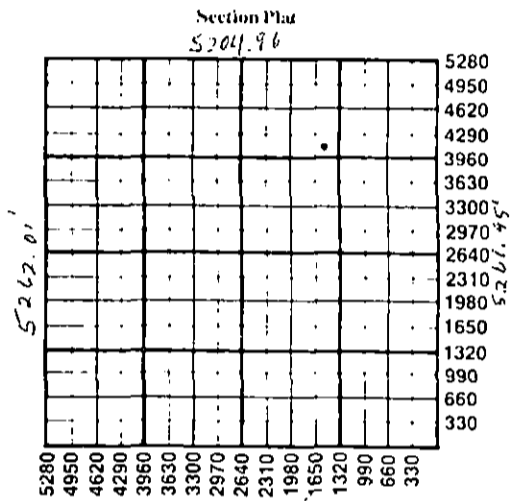
API NO. 15 - 189-20,694-0000  
County Stevens  
Bottom hole  
SE...NW...NE... Sec 26...Twp 32S...Rge 35...X West  
(location) 4173.25 Bottom Hole  
1507 Ft North from Southeast Corner of Section  
Ft West from Southeast Corner of Section  
(Note: locate well in section plat below)

Lease Name Tom Boles Well# 1-A

Field Name Wildcat KARRADEE, S.W.

Producing Formation Chester

Elevation: Ground 2995' KB 3010'



WATER SUPPLY INFORMATION

Source of Water:  
Division of Water Resources Permit # \_\_\_\_\_  
 Groundwater (nearby) \_\_\_\_\_ Ft North From Southeast Corner and  
(Well) \_\_\_\_\_ Ft. West From Southeast Corner of  
Sec Twp Rge  East  West  
 Surface Water \_\_\_\_\_ Ft North From Southeast Corner and  
(Stream, Pond etc.) \_\_\_\_\_ Ft West From Southeast Corner  
Sec Twp Rge  East  West  
 Other (explain) \_\_\_\_\_  
(purchased from city, R.W.D.#)

Disposition of Produced Water:  Disposal  Repressuring

Docket # CD-82,408-C  
(C-13,831)

INSTRUCTIONS: This form shall be completed in duplicate and filed with the Kansas Corporation Commission, 200 Colorado Derby Building, Wichita, Kansas 67202, within 90 days after completion or recompletion of any well. Rules 82-3-130 and 82-3-107 apply.

Information on side two of this form will be held confidential for a period of 12 months if requested in writing and submitted with the form. See rule 82-3-107 for confidentiality in excess of 12 months.

One copy of all wireline logs and drillers time log shall be attached with this form. Submit CP-4 form with all plugged wells. Submit CP-111 form with temporarily abandoned wells.

If requirements of the statutes, rules, and regulations promulgated to regulate the oil and gas industry have been fully complied with and the statements herein are complete and correct to the best of my knowledge.

RECEIVED  
STATE CORPORATION COMMISSION  
AUG 20 1984  
CONSERVATION DIVISION  
Wichita, Kansas

Signature C. J. Park  
Title Producing Accounting Supervisor  
Date 8-15-84

Subscribed and sworn to before me this 15th day of August 1984

Notary Public  
Notary Commission Expires 26th 1984

K.C.C. OFFICE USE ONLY  
F  Letter of Confidentiality Attached  
C  Wireline Log Received  
C  Drillers Timelog Received  
Distribution  
 KCC  SWD/Rep  NGPA  
 KGS  Plug  Other  
(Specify)

Handwritten notes on the right margin: 216, 1003, 200, 35-0

SIDE TWO

Operator Name Mobil Oil Corporation... Lease Name Tom Boles. Well# 1-A SEC. 26... TWP. 32S. RGE. 35...  East  West  
 Surface location - NE NW NE

WELL LOG 5110.67' N of SE Cor, 1926' W of SE Cor

**INSTRUCTIONS:** Show important tops and base of formations penetrated. Detail all cores. Report all drill stem tests giving interval tested, time tool open and closed, flowing and shut-in pressures, whether shut-in pressure reached static level, hydrostatic pressures, bottom hole temperature, fluid recovery, and flow rates if gas to surface during test. Attach extra sheet if more space is needed. Attach copy of log.

Drill Stem Tests Taken  Yes  No  
 Samples Sent to Geological Survey  Yes  No  
 Cores Taken  Yes  No

Formation Description  
 Log  Sample

Name	Top	Bottom
Chase	2650	
Winfield	2720	
C. Grove	2963	
Admire	3232	
Wabaunsee	3350	
Shawnee	3770	
Lansing	4295	
Kansas City	4620	
Marmaton	5018	
Cherokee	5223	
Morrow	5640	
Chester	5893	
St. Genevieve	6184	

**CASING RECORD**  new  used

Report all strings set - conductor, surface, intermediate, production, etc.

Purpose of string	size hole drilled	size casing set (In O.D.)	weight lbs/ft.	setting depth	type of cement	# sacks used	type and percent additives
Surface	12 1/4"	9 5/8"	36#	1760'	Class H	750	10% salt + 1/4/sk De-Air
Production	7 7/8"	5 1/2"	15.5#	6380'	Class H Class H	275 460	-

**PERFORATION RECORD**

**Acid, Fracture, Shot, Cement Squeeze Record**

shots per foot	specify footage of each interval perforated	(amount and kind of material used)	Depth
2	6258-6262 6240-6243 6244-6250 6263-6264	Rig up Howco and frac as follows: Gelled diesel pad, 4500 gal. gelled diesel w/4500 gal. w/2 ppg 20/40 sand, 4500 gal. w/3 ppg, 1650 gal. flush	

**TUBING RECORD**

size 2 7/8" set at N/A packer at 6100' Liner Run  Yes  No

Date of First Production \_\_\_\_\_ Producing method  flowing  pumping  gas lift  Other (explain) \_\_\_\_\_

Estimated Production Per 24 Hours	Oil	Gas	Water	Gas - Oil Ratio	Gravity
	Bbls	MCF	Bbls	CFPB	
	-	-	-	-	-

Disposition of gas:  vented  
 sold  
 used on lease

**METHOD OF COMPLETION**

open hole  perforation  
 other (specify) \_\_\_\_\_

**PRODUCTION INTERVAL**

6240-6264'

Dually Completed.  
 Commingled