

15-095-00019-0000

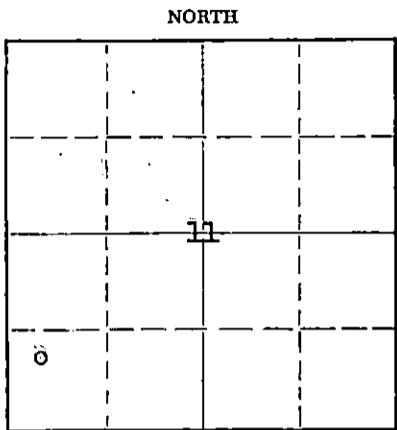
STATE OF KANSAS
STATE CORPORATION COMMISSION

Give All Information Completely
Make Required Affidavit
Mail or Deliver Report to:
Conservation Division
State Corporation Commission
212 North Market, Insurance Bldg.
Wichita, Kansas

WELL PLUGGING RECORD

Kingman County, Sec. 11 Twp. 30 S Rge. (E) 7 (W)

Location as "NE/CNW/SW" or footage from lines Center NW-SW-SW
Lease Owner The Pure Oil Company
Lease Name Thompson, T. J. Well No. 1
Office Address Box #9545, Oklahoma City 18, Oklahoma
Character of Well (completed as Oil, Gas or Dry Hole) Gas Well
Date well completed December 1, 1956
Application for plugging filed September 20, 1962
Application for plugging approved September 24, 1962
Plugging commenced October 25, 1962
Plugging completed October 31, 1962
Reason for abandonment of well or producing formation Depleted Gas Well



Locate well correctly on above Section Plat

If a producing well is abandoned, date of last production November 19 61
Was permission obtained from the Conservation Division or its agents before plugging was commenced? Yes

Name of Conservation Agent who supervised plugging of this well Herman Justus
Producing formation Mississippian Depth to top 4098 Bottom 4118 Total Depth of Well 4118 Feet
Show depth and thickness of all water, oil and gas formations.

OIL, GAS OR WATER RECORDS

CASING RECORD

FORMATION	CONTENT	FROM	TO	SIZE	PUT IN	PULLED OUT
Lansing	Dry	3281	3563	8-5/8"	161'	None
Kansas City	Salt Water	3563	3754	5-1/2"	4118'	3026'
Gilchrist Porosity	Dry	3754	3863			
Marmaton	Dry	3863	4009			
Cherokee	Dry	4009	4098			
Mississippian	Gas	4098	4118			

Describe in detail the manner in which the well was plugged, indicating where the mud fluid was placed and the method or methods used in introducing it into the hole. If cement or other plugs were used, state the character of same and depth placed, from _____ feet to _____ feet for each plug set.

Pumped 100 bbls. salt water down tubing and killed well. Pulled tubing. Filled hole from total depth to 3450 with salt water, then spotted 20 sacks cement plug from 3450 to 3302. Shot 5-1/2" casing @ 3100' and 3026'. Free @ 3026' and pulled 95 joints. Filled with salt water to 150' from surface. Filled 8-5/8" casing with crushed rock from 150' to 138' and with 20 sx. cement from 138' to 78', mud from 78' to 30' and 10 sx. cement from 30' to bottom of cellar.

RECEIVED
STATE CORPORATION COMMISSION

NOV 13 1962

CONSERVATION DIVISION
Wichita, Kansas

(If additional description is necessary, use BACK of this sheet)
Name of Plugging Contractor Forbes Casing Pulling, Inc.
Address Box #221, Great Bend, Kansas

STATE OF Oklahoma COUNTY OF Oklahoma, ss.

(employee of owner) or (owner or operator) of the above-described well, being first duly sworn on oath, says: That I have knowledge of the facts, statements, and matters herein contained and the log of the above-described well as filed and that the same are true and correct. So help me God.

(Signature) [Signature] Dist. Office Mgr.
Box #9545, Oklahoma City 18, Oklahoma
(Address)

SUBSCRIBED AND SWORN TO before me this _____ day of November, 19 62

My commission expires April 14, 1964

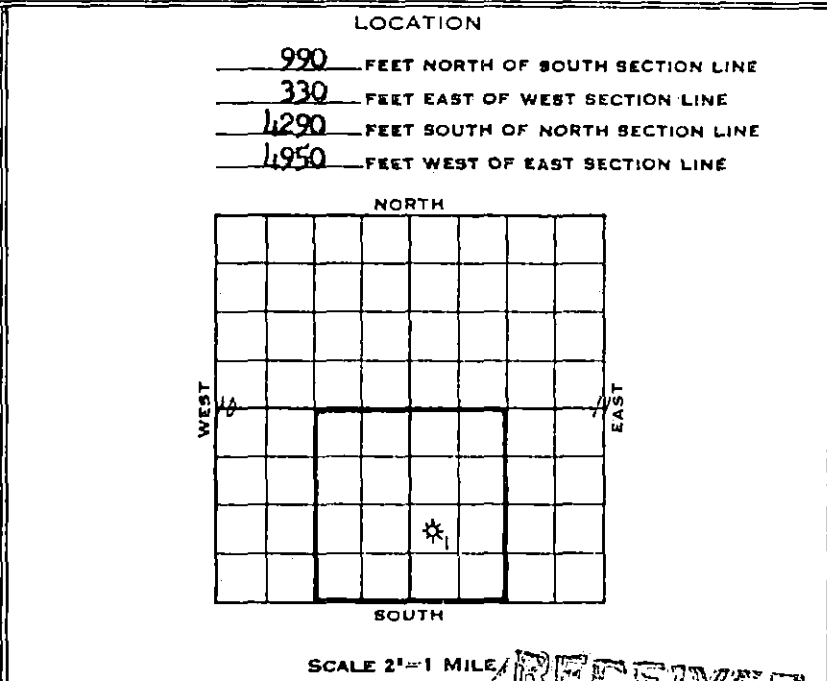
[Signature]
Notary Public.

WELL LOG AND RELATED DATA

15-095-00019-0000 PART INTEREST

DIVISION S. W. Producing DISTRICT Buffalo LEASE Thompson, T. J.
 ACRE 80 (pt. 160A unit) Pt. 14149 & 14076 2321 ELEVATION Grd. 1433' D.F. 1436' WELL NO. 1
 SURV. SEC. 11 TWP. 30 S RGE. 7 W PRCT.-DIST.-TWP. _____
 SURVEY (Rago-Belmont Prospect) COUNTY Kingman STATE Kansas

LOG			
FROM	TO	TOTAL	FORMATION
(Sample data begin at 3250')			
0	70	70	Sand & Shale
70	163	93	Shale
163	250	87	Red Beds
250	980	730	Shale
980	1064	84	Lime, Shale & Shells
1064	1410	346	Lime & Shale
1410	1430	20	Lime
1430	2775	1345	Lime & Shale
2775	2915	140	Lime
2915	3250	335	Lime & Shale
3250	3281	31	Shale, gray
3281	<u>LANSING</u>		(Geol. Top)
3281	<u>3430</u>	149	Lime, tan to buff, chalky locally, crystalline w/traces of porosity, locally, w/an occasional shale break.
3430	3563	133	Shale, gray w/some thin lime beds
3563	<u>KANSAS CITY</u>		(Geol. Top)
3563	<u>3690</u>	127	Lime, white-tan-crystalline, slightly chalky, slightly oolitic locally w/ thin shale breaks locally
3690	3696	6	Lime, buff, oolitic & oolitic, good porosity but poor permeability, fair color, trace of scattered stain & fluorescence
3696	3754	58	Lime, gray to tan, oolitic locally, scattered shale breaks
3754	<u>GILCHRIST POROSITY (Geol. Top)</u>		
3754	<u>3770</u>	15	Lime, gray to tan, oolitic & oolitic, good porosity but poor permeability scattered mineral fluorescence, no show
3770	3863	93	Lime, buff-crystalline cherty locally w/thin shale breaks
3863	<u>MARMATON</u>		(Geol. Top)
3863	<u>4009</u>	146	Lime, buff-crystalline chalky locally, w/ trace chert, fossiliferous locally.
4009	<u>CHEROKEE</u>		(Geol. Top)
4009	<u>4098</u>	89	Shale, gray & Shale, green & Shale, variegated w/thin lime beds, buff crystalline



CASING AND CEMENTING RECORD

SIZE CASING	8-5/8"	5-1/2"	
THREAD	8 rd.	8 rd.	
WEIGHT	32#	11#	
GRADE	J-55	J-55	
CONDITION	G/A	G/A	
SET AT	161'	4118'	
BACKS CEMENT	150	200	
SIZE OF HOLE	12-1/4"	7-7/8"	

Temperature survey indicated top cement behind 5-1/2" at 3100'.

LINER RECORD

SIZE	WT.	COND.	LENGTH	BLANK	PERF.	SET AT

GUN PERFORATING RECORD

DATE	CASING	FROM	TO	SIZE SHOTS	NO. SHOTS
12/ 5/56	5-1/2"	4102	4108	3/8"	24

SHOT OR ACID RECORD

DATE	TOP	BOTTOM	SHOT-ACID	REMARKS

DRILLING: COMMENCED 11/19/56 COMPLETED 12/ 1/56
 ELECTRICAL SURVEY BY Schlumberger (Laterlog) 12/ 2/56 (1)
 DRILLED WITH (D&M Drlg. Co.) Rotary TOOLS
 DRILLED IN WITH (D&M Drlg. Co.) Rotary TOOLS
 FIRST PROD. - NAT. DATE 12/ 6 HRS. 4 BBLs. - OIL
 WATER 365 M CU. FT. GAS - LBS. ROCK PRESS.
 FIRST PROD. AFTER ACID - DATE - HRS. - BBLs. - OIL
 WATER - M CU. FT. GAS - LBS. ROCK PRESS.
 GAS/OIL RATIO - POTENTIAL 365 MCFD Gas (2) max
 GRAVITY - TEMP. - GRADE -

(1) Lane-Wells (Gamma-Ray) 12/ 5/56.
 (2) Completed as SI gas well 12/ 6/56.

DIVISION OF INTEREST:
 The Pure Oil Co. (Opr.) 50%
 Aurora Gasoline Co. 25%
 Sunray Mid-Continent 25%

DATE ABANDONED - SOLD _____ 19 _____

FROM	TO	TOTAL	FORMATION	FROM	TO	TOTAL	FORMATION
4098	MISSISSIPPIAN (Geol. Top)			ADDITIONAL WELL DATA:			
4098	4118	20	Chert, tan w/chert, white scattered fluorescence & stain, pinpoint porosity, staining mostly brown, trace of asphaltic stain, faint odor in top, good odor in bottom trace of free oil in bottom.	ANGULAR DEVIATION:			
				Degrees		Degrees	
				Depth	Off Vertical	Depth	Off Vertical
				131	3/4	1750	1/4
				500	1/4	2000	3/4
				750	1/2	2250	1/2
				1000	1/4	2900	1-1/2
				1250	3/4	3280	1-1/4
				1500	3/4	3960	1
4118			TOTAL DEPTH	DRILL STEM TESTS:			
	PLUGGED BACK:			11/28/56 3675-3697 (Kansas City)			
4118	4116	2	Cement in 5-1/2" casing.	Initial 20 minutes SI BHP 1595#. Tool open 1 hour. Weak blow air to surface immediately increasing to fair blow and continued throughout test. Recovered 180' slightly gas-cut muddy salt water. IFF 65#, FFP 120#, Final 20 minute SI BHP 1415# (HP 1970#)			
4116			TOTAL DEPTH-PB	12/ 2/56 4096-4118 (Mississippian)			
			(Tops and perforated zone taken from Schlumberger Log)	Initial 20 minute SI BHP 1655#. Tool open 2 hrs. Air to surface immediately, gas in 3 minutes. Gas volume tested 1,020,000 CFD. Recovered 55' gas-cut mud, 60' slightly oil & water-cut mud, and 60' salt water. IFF 170# FFP 154#. Final 20 minute SI BHP 1458# (HP 2269#)			
			(All measurements taken from top of rotary bushing which is 2" above derrick floor.)	P.B. & PERFORATION:			
	PAY ZONE:			Set 5-1/2" casing at 4118' with 200 sx. Peamix. Drilled cement plug 4049-4116, now plugged back total depth. Lane-Wells ran Gamma Ray Log, then perforated 5-1/2" casing in Mississippian 4102-4108 with 24 shots 4 shots per ft.			
4102	4108			VISQUEEZE 10-11-61 - 10-23-61			
			PETROFRAC: 8-26-59	B-J made Visqueeze treatment w/750 gal, 10 gal J-10 & 75 sx. cement : max 2200#, min 1100#.			
			Dowell treated Miss thru perf in 5 1/2" 4102-4108 as follows: loaded csg w/20 bbl salt wtr. Pumped in 250 gal mud acid followed by 6000 gal petrofrac & 6000# sand @ max press 2100#, min 2100#. Flushed csg w/100 bbl sat wtr. Prod 1000 MCFD gas and 190 bbl salt wtr.	Prod before: 0 oil, 30 wtr, 6 MCFD gas			
			SQUEEZE: 10-21-59 & PB:	Prod after : 0 oil, 0 wtr, gas too small to measure			
			Broke down form @ 1700# & squeezed 57 sx cem thru perf in 5 1/2" 4102-4108 @ 3000#. Drld cem plug 4174-4106 (TD PB)				
			PERFORATION: 10-24-59				
			Frontier perf 5 1/2" in Miss 4096-4100 w/16 jet shots (4 per ft)				
			ACID: 10-26-59				
			Dowell treated Miss thru perf in 5 1/2" 4096-4100 as follows: loaded hole w/100 bbl salt wtr. Pumped in 300 gal mud acid @ 800# max, 425# min. Flushed tubg w/8 bbl salt wtr, ending flush @ 400#				
			PETROJEL FRAC: 10-29-59				
			Dowell treated Miss thru perf in 5 1/2" as follows: loaded csg w/70 bbl salt wtr, loaded tubg w/16 bbl oil & broke down form w/8 bbl oil @ 3550#. Pumped in 3000 gal petrojel & 3000# sand @ 3525# max, 3535# min. Flushed tubg w/22 bbl oil, ending flush @ 1000#.				
			PERFORATION: 11-3-59				
			Frontier perf 5 1/2" in Miss 4100-4106 w/24 jet shots (4 per ft)				
			ACID: 11-3-59				
			Dowell spotted 300 gal mud acid thru perf in 5 1/2" csg 4100-4106 @ 250# max, 125# min. Flushed tubg w/1 bbl salt wtr, ending flush @ 250#				