

STATE CORPORATION COMMISSION OF KANSAS
OIL & GAS CONSERVATION DIVISION
WELL COMPLETION FORM
ACO-1 WELL HISTORY
DESCRIPTION OF WELL AND LEASE

Operator: License # 9953
Name: HARRIS OIL & GAS COMPANY
Address 1125 - 17th St., Ste 2290
Denver, CO 80202

City/State/Zip _____
Purchaser: D & A

Operator Contact Person: Bud Harris
Phone (303) 293-8838

Contractor: Name: ALLEN DRILLING COMPANY
License: 5418

Wellsite Geologist: G. Wilkins

Designate Type of Completion
 New Well Re-Entry Workover

Oil SWD S10W Temp. Abd.
 Gas ENHR SIGW
 Dry Other (Core, WSW, Exp. etc)

If Workover:
Operator: N/A **MAR 23 1998**

Well Name: _____
Comp. Date _____ Old Total Depth _____

Deepening Re-perf. Conv. to Inj/SWD
 Plug Back PBTB
 Commingled Docket No. _____
 Dual Completion Docket No. _____
 Other (SWD or Inj?) Docket No. _____

9/24/96 10/09/96 10/09/96
Spud Date Date Reached TD Completion Date

API NO. 15- 187-20849-0000
County Stanton

E/2 SW- SE: Sec. 4 Twp. 29S Rge. 42 X W
660 Feet from S/N (circle one) Line of Section
1650 Feet from E/W (circle one) Line of Section

Footages Calculated from Nearest Outside Section Corner:
NE, SE, NW or SW (circle one)

Lease Name KILGORE/CARRITHERS Well # 1-4

Field Name Wildcat

Producing Formation D & A

Elevation: Ground 3464' 13' 3477'
KB

Total Depth 5660' PBTB --

Amount of Surface Pipe Set and Cemented at 1640 Feet

Multiple Stage Cementing Collar Used? Yes No

If yes, show depth set _____ Feet

If Alternate II completion, cement circulated from _____

feet depth to _____ w/ _____ sx cmt.

Drilling Fluid Management Plan
(Data must be collected from the Reserve Pit)

Chloride content _____ ppm Fluid volume _____ bbls

Dewatering method used STATE CORPORATION COMMISSION

Location of fluid disposal if hauled offsite: NOV 20 1996

Operator Name KCC CONSERVATION DIVISION

Lease Name KCC Wichita, Kansas License No. _____

NOV 18 Sec. _____ Twp. _____ S Rng. _____ E/W

County CONFIDENTIAL Docket No. _____

RELEASED

FROM CONFIDENTIAL

RECEIVED

NOV 20 1996

CONFIDENTIAL

INSTRUCTIONS: An original and two copies of this form shall be filed with the Kansas Corporation Commission, 130 S. Market - Room 2078, Wichita, Kansas 67202, within 120 days of the spud date, recompletion, workover or conversion of a well. Rule 82-3-130, 82-3-106 and 82-3-107 apply. Information on side two of this form will be held confidential for a period of 12 months if requested in writing and submitted with the form (see rule 82-3-107 for confidentiality in excess of 12 months). One copy of all wireline logs and geologist well report shall be attached with this form. ALL CEMENTING TICKETS MUST BE ATTACHED. Submit CP-4 form with all plugged wells. Submit CP-111 form with all temporarily abandoned wells.

All requirements of the statutes, rules and regulations promulgated to regulate the oil and gas industry have been fully complied with and the statements herein are complete and correct to the best of my knowledge.

Signature W.G. Smith

Title President Date 10/31/96

Subscribed and sworn to before me this 31st day of October, 19 96.

Notary Public Isaac Adams

Date Commission Expires March 17, 2000

K.C.C. OFFICE USE ONLY

F Letter of Confidentiality Attached
 C Wireline Log Received
 C Geologist Report Received

Distribution

KCC SWD/Rep NGPA
 KGS Plug Other
 (Specify)

ORIGINAL

SIDE TWO

Operator Name HARRIS OIL & GAS COMPANY

Lease Name KILGORE/CARRITHERS Well # 1-4

Sec. 4 Twp. 29S Rge. 42

East
 West

County Stanton

INSTRUCTIONS: Show important tops and base of formations penetrated. Detail all cores. Report all drill stem tests giving interval tested, time tool open and closed, flowing and shut-in pressures, whether shut-in pressure reached static level, hydrostatic pressures, bottom hole temperature, fluid recovery, and flow rates if gas to surface during test. Attach extra sheet if more space is needed. Attach copy of log.

Drill Stem Tests Taken Yes No
(Attach Additional Sheets.)

Samples Sent to Geological Survey Yes No

Cores Taken Yes No

Electric Log Run Yes No
(Submit Copy.)

List All E.Logs Run:
Array Induction - SD - MICRO -
Compensated Neutron - Litho Density - GR
By: Schlumberger

Log Formation (Top), Depth and Datum Sample

Name	Top	Datum
Heebner	3610'	-133
Lansing	3720'	-243
Marmaton	4275'	-798
Morrow	5057'	-1580
Ste. Genevieve	5428	-1951
St. Louis	5512	-2035

CASING RECORD

New Used

Report all strings set-conductor, surface, intermediate, production, etc.

Purpose of String	Size Hole Drilled	Size Casing Set (In O.D.)	Weight Lbs./Ft.	Setting Depth	Type of Cement	# Sacks Used	Type and Percent Additives
conductor		13-3/8"					
surface	12-1/4"	8-5/8"	24#	1640'	Class A Class A	550 150	3%CC 3%CC Ran 60 sks down back side

ADDITIONAL CEMENTING/SQUEEZE RECORD

Purpose:	Depth		Type of Cement	#Sacks Used	Type and Percent Additives
	Top	Bottom			
Perforate					
Protect Casing					
Plug Back TD	N/A				
Plug Off Zone					

Shots Per Foot	PERFORATION RECORD - Bridge Plugs Set/Type		Acid, Fracture, Shot, Cement Squeeze Record	
	Specify Footage of Each Interval Perforated		Amount and Kind of Material Used	Depth
	N/A			

TUBING RECORD		Size	Set At	Packer At	Liner Run	<input type="checkbox"/> Yes <input type="checkbox"/> No	
Date of First, Resumed Production, SWD or Inj.		Producing Method		<input type="checkbox"/> Flowing <input type="checkbox"/> Pumping <input type="checkbox"/> Gas Lift <input type="checkbox"/> Other (Explain)			
N/A							
Estimated Production Per 24 Hours	Oil	Bbls.	Gas	Mcf	Water	Bbls.	Gas-Oil Ratio Gravity

Disposition of Gas: METHOD OF COMPLETION Production Interval

Vented Sold Used on Lease Open Hole Perf. Dually Comp. Commingled

(If vented, submit ACO-18.) Other (Specify) _____

ORIGINAL

Harris Oil & Gas Corp.
Kilgore-Carrithers \$1-4
4-29s-42w
Stanton County Kansas

DATE: 10-7-96
TIME: 10:00 AM
WELL: 15-187-20849
LOG NO: 100

RELEASED

MAR 23 1998

CONFIDENTIAL

WELL NAME: Kilgore-Carrithers \$1-4
COMPANY: Harris Oil & Gas Corp.
LOCATION: 4-29s-42w
Stanton County Kansas
DATE: 10-8-96

TIME DATA
FROM CONFIDENTIAL
15-187-20849

Oil Flow	2773.0	2773.0	0.0	0.0	0.0
Gas Flow	101.0	101.0	0.0	0.0	0.0
Water Flow	12.0	12.0	0.0	0.0	0.0
Steam In	182.0	182.0	0.0	0.0	0.0
Steam Flow	107.0	94.0	0.0	0.0	0.0
Gas Flow	131.0	94.0	0.0	0.0	0.0
Shut-In	0.0	0.0	0.0	0.0	0.0
Gas Hydro	2753.0	2753.0	0.0	0.0	0.0

STARTED 1945
BY BOH 2326
OPEN 2330
T. MILLER 2340
CUT NOV

NOV 18
INITIAL SURV. NO. 62000.00
LATEST SURV. NO. 82000.00
PO. CHG. 0.75 in
R. CH. DATE 7.30 in
2.00 in
C. I. NO. 340.00
C. I. NO. 3370.00
R. I. NO. 2100 in

CONFIDENTIAL

WELL LOG NO. 15-187-20849
DATE: 10-8-96
TIME: 10:00 AM
WELL: 15-187-20849
LOG NO: 100

DESCRIPTION
1. Flow -
2. Elong. - Bull. no. 1/2"

State Geologist
Harold Frye
Allen Driller

TRILOBITE TESTING L.L.C.

OPERATOR : Harris Oil & Gas Corp. DATE 10-7-96
 NAME: Kilgore-Carrithers #1-4 KB 3477.00 ft TICKET NO: 8642 DST #1
 LOCATION : 4-29s-42w Stanton KS GR 3464.00 ft FORMATION: Morrow
 INTERVAL : 5415.00 To 5493.00 ft TD 5493.00 ft TEST TYPE: CONV STRADDLE

ORDER DATA

Tests	Field	1	2	3	4	TIME DATA-----
30 Rec.	10333	10333	1055	2836		PF Fr. 2230 to 2300 hr
30 Range (Psi)	4075.0	4075.0	4050.0	3500.0	0.0	IS Fr. 2300 to 2330 hr
10 Clock (hrs)	12	12	12	12		SF Fr. 2330 to 2340 hr
0 Depth (ft)	5478.0	5478.0	5648.0	5651.0	0.0	FS Fr. to hr

	Field	1	2	3	4	
Init Hydro	2773.0	2772.0	0.0	0.0	0.0	T STARTED 1945 hr
First Flow	101.0	82.0	0.0	0.0	0.0	T ON BOTM 2228 hr
Final Flow	101.0	82.0	0.0	0.0	0.0	T OPEN 2230 hr
In Shut-in	1323.0	1322.0	0.0	0.0	0.0	T PULLED 2340 hr
Init Flow	101.0	94.0	0.0	0.0	0.0	T OUT 0300 hr
Final Flow	101.0	94.0	0.0	0.0	0.0	
Fl Shut-in	0.0	0.0	0.0	0.0	0.0	
Final Hydro	2753.0	2755.0	0.0	0.0	0.0	
de/Outside	0	I				

TOOL DATA-----

Tool Wt.	0.00 lbs
Wt Set On Packer	30000.00 lbs
Wt Pulled Loose	92000.00 lbs
Initial Str Wt	82000.00 lbs
Unseated Str Wt	82000.00 lbs

VERY...
 Fluid 30.00 ft of 30.00 ft in DC and 0.00 ft in DP
 0 ft of Drilling Mud
 ft of
 ft of
 ft of
 ft of
 ft of
 ft of
 ft of

Bot Choke	0.75 in
Hole Size	7.88 in
D Col. ID	2.25 in
D. Pipe ID	3.80 in
D.C. Length	540.00 ft
D.P. Length	5378.00 ft
H.W. I.D	2.70 in

DENSITY 0.00 P.P.M. A.P.I. Gravity 0.00

MUD DATA-----

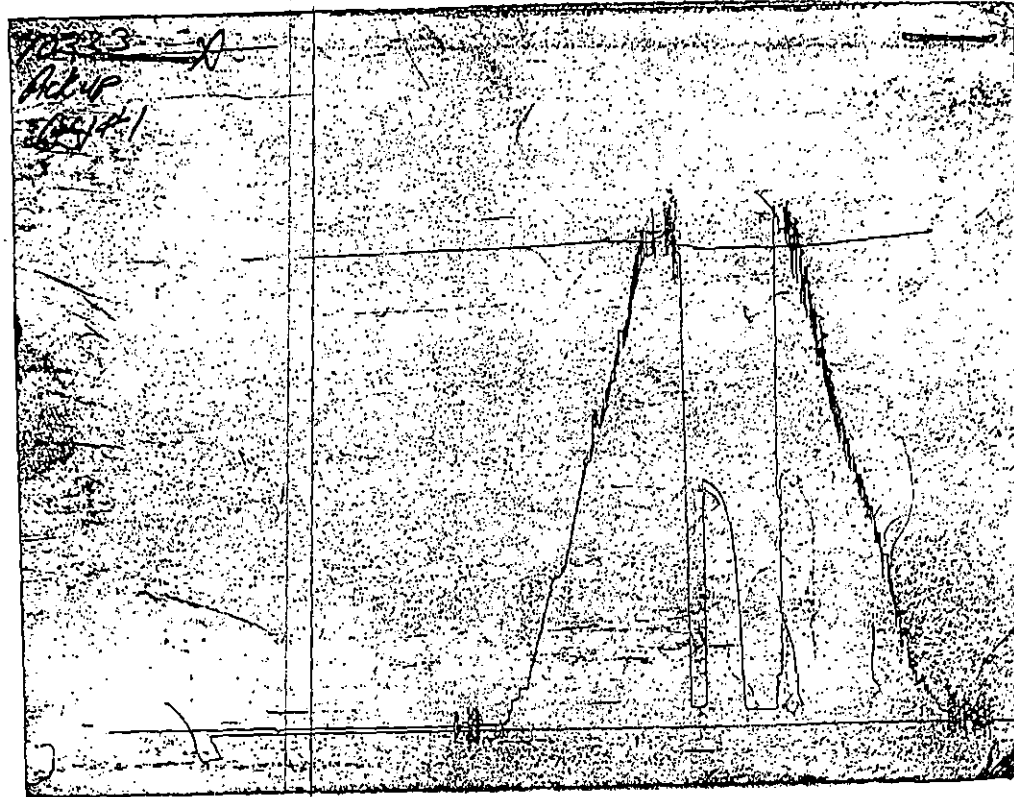
DESCRIPTION
 Initial Flow -
 Back Blow - Built to 1/2"
 and Opening -
 Blow

Mud Type	Chem
Weight	9.10 lb/c
Vis.	50.00 S/L
W.L.	8.80 in3
F.C.	0.00 in
Mud Drop	
Amt. of fill	0.00 ft
Btm. H. Temp.	121.00 F
Hole Condition	
% Porosity	0.00
Packer Size	6.75 in
No. of Packers	3
Cushion Amt.	0.00
Cushion Type	
Reversed Out	
Tool Chased	
Tester	Mike Colantonio
Co. Rep.	Harold Fraule
Contr.	Allen Drilling
Rig #	5
Unit #	
Pump T.	

ES:
TO:

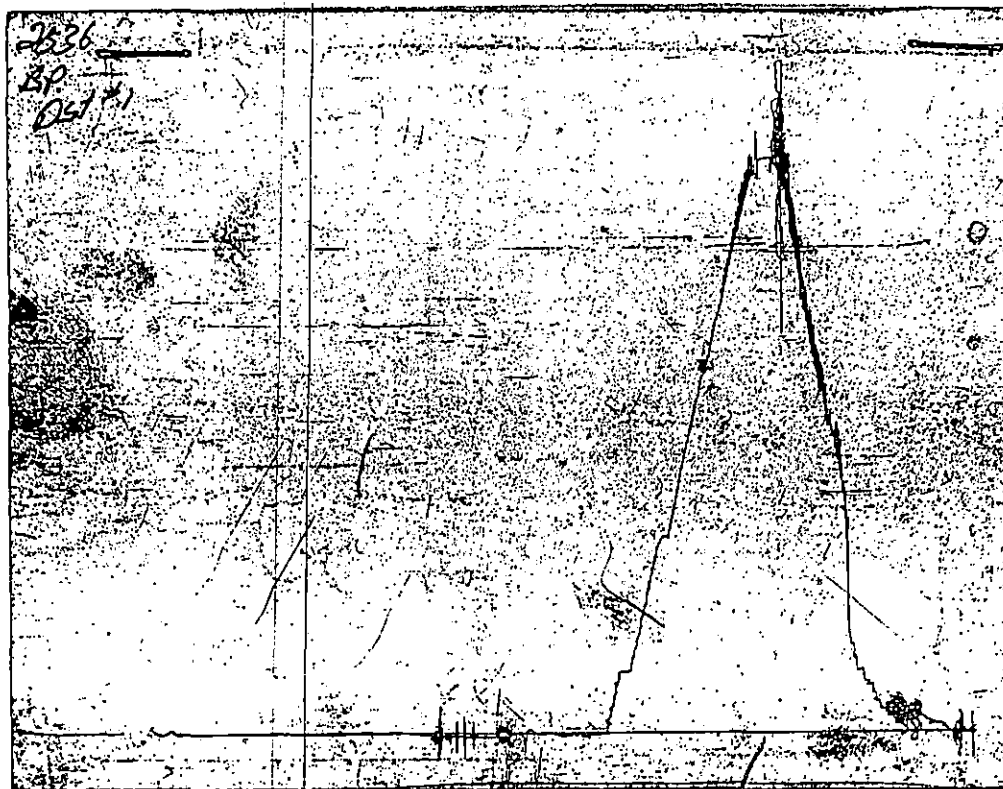
Test Successful: Y

CHART PAGE



This is a photocopy of the actual AK-1 recorder chart

CHART PAGE



This is a photocopy of the actual AK-1 recorder chart

TRILOBITE TESTING L.L.C.

OR : Harris Oil & Gas Corp. DATE 10-8-96
 NAME: Kilgore-Carrithers #1-4 KB 3477.00 ft TICKET NO: 8643 DST #2
 CON : 4-29s-42w Stanton GR 3464.00 ft FORMATION: St. Louis
 TOTAL : 5500.00 To 5660.00 ft TD 5660.00 ft TEST TYPE: CONV

OTHER DATA

	Field	1	2	3	4	TIME DATA-----
0 Rec.	10333	10333	2836			PF Fr. 1417 to 1447 hr
0 Range (Psi)	4075.0	4075.0	4050.0	0.0	0.0	IS Fr. 1447 to 1547 hr
0 Clock (hrs)	12	12	12			SF Fr. 1547 to 1617 hr
0 Depth (ft)	5504.0	5504.0	5657.0	0.0	0.0	FS Fr. 1617 to 1717 hr

	Field	1	2	3	4	
0 Bit Hydro	2753.0	2776.0	0.0	0.0	0.0	T STARTED 1130 hr
0 First Flow	60.0	67.0	0.0	0.0	0.0	T ON BOTM 1415 hr
0 Initial Flow	193.0	185.0	0.0	0.0	0.0	T OPEN 1417 hr
0 Shut-in	1323.0	1322.0	0.0	0.0	0.0	T PULLED 1717 hr
0 Bit Flow	203.0	190.0	0.0	0.0	0.0	T OUT 2100 hr
0 Initial Flow	294.0	291.0	0.0	0.0	0.0	
0 Shut-in	1293.0	1308.0	0.0	0.0	0.0	
0 Initial Hydro	2497.0	2508.0	0.0	0.0	0.0	
0 /Outside	0	0	I			

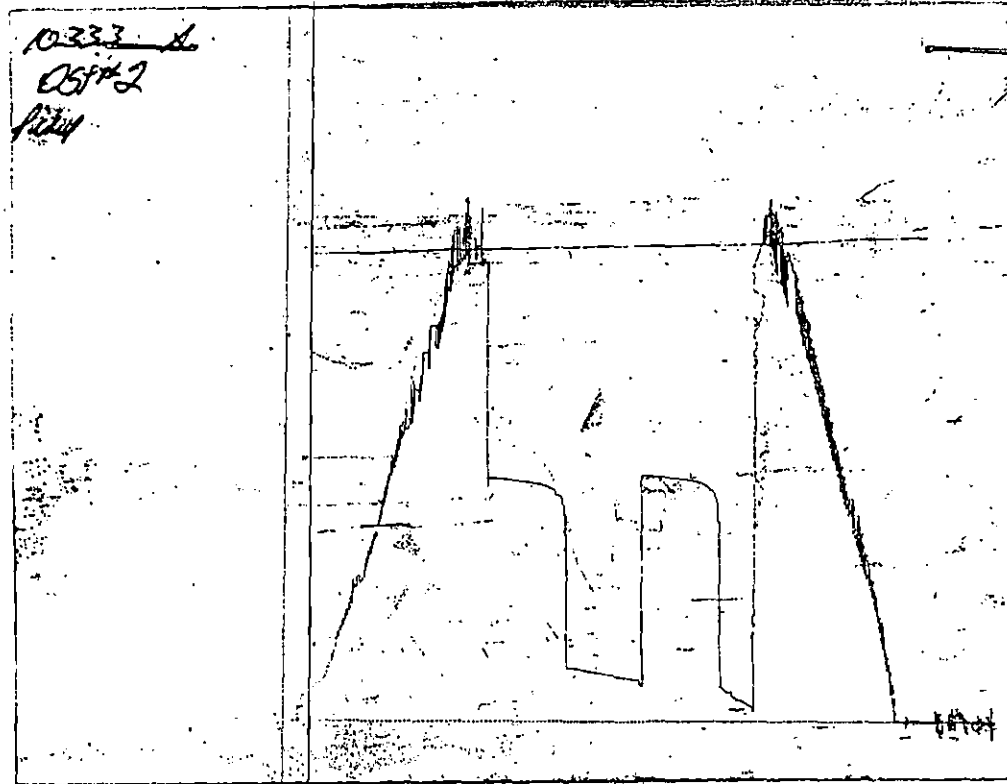
TOOL DATA-----
 Tool Wt. 0.00 lbs
 Wt Set On Packer 30000.00 lbs
 Wt Pulled Loose 95000.00 lbs
 Initial Str Wt 82000.00 lbs
 Unseated Str Wt 88000.00 lbs
 Bot Choke 0.75 in
 Hole Size 7.88 in
 D Col. ID 2.25 in
 D. Pipe ID 3.80 in
 D.C. Length 540.00 ft
 D.P. Length 5378.00 ft
 H.W. I.D 2.70 in

MUD DATA-----
 MUD TYPE Chem
 Weight 9.10 lb/cf
 Vis. 50.00 S/L
 W.L. 8.80 in³
 F.C. 0.00 in
 Mud Drop
 Amt. of fill 0.00 ft
 Btm. H. Temp. 124.00 F
 Hole Condition
 % Porosity 0.00
 Packer Size 6.75 in
 No. of Packers 3
 Cushion Amt. 0.00
 Cushion Type
 Reversed Out
 Tool Chased
 Tester Mike Colantonio
 Co. Rep. Roger Pearson
 Contr. Allen Drilling
 Rig # 5
 Unit #
 Pump T.

DESCRIPTION
 1 Flow -
 2 Flow - Built to 8 in.
 Opening -
 Blow for 6 min., then slow
 3 Flow - built to bottom of
 4 Flow - built to bottom of
 5 Flow - built to bottom of
 6 Flow - built to bottom of
 7 Flow - built to bottom of
 8 Flow - built to bottom of
 9 Flow - built to bottom of
 10 Flow - built to bottom of
 11 Flow - built to bottom of
 12 Flow - built to bottom of
 13 Flow - built to bottom of
 14 Flow - built to bottom of
 15 Flow - built to bottom of
 16 Flow - built to bottom of
 17 Flow - built to bottom of
 18 Flow - built to bottom of
 19 Flow - built to bottom of
 20 Flow - built to bottom of
 21 Flow - built to bottom of
 22 Flow - built to bottom of
 23 Flow - built to bottom of
 24 Flow - built to bottom of
 25 Flow - built to bottom of
 26 Flow - built to bottom of
 27 Flow - built to bottom of
 28 Flow - built to bottom of
 29 Flow - built to bottom of
 30 Flow - built to bottom of
 31 Flow - built to bottom of
 32 Flow - built to bottom of
 33 Flow - built to bottom of
 34 Flow - built to bottom of
 35 Flow - built to bottom of
 36 Flow - built to bottom of
 37 Flow - built to bottom of
 38 Flow - built to bottom of
 39 Flow - built to bottom of
 40 Flow - built to bottom of
 41 Flow - built to bottom of
 42 Flow - built to bottom of
 43 Flow - built to bottom of
 44 Flow - built to bottom of
 45 Flow - built to bottom of
 46 Flow - built to bottom of
 47 Flow - built to bottom of
 48 Flow - built to bottom of
 49 Flow - built to bottom of
 50 Flow - built to bottom of
 51 Flow - built to bottom of
 52 Flow - built to bottom of
 53 Flow - built to bottom of
 54 Flow - built to bottom of
 55 Flow - built to bottom of
 56 Flow - built to bottom of
 57 Flow - built to bottom of
 58 Flow - built to bottom of
 59 Flow - built to bottom of
 60 Flow - built to bottom of
 61 Flow - built to bottom of
 62 Flow - built to bottom of
 63 Flow - built to bottom of
 64 Flow - built to bottom of
 65 Flow - built to bottom of
 66 Flow - built to bottom of
 67 Flow - built to bottom of
 68 Flow - built to bottom of
 69 Flow - built to bottom of
 70 Flow - built to bottom of
 71 Flow - built to bottom of
 72 Flow - built to bottom of
 73 Flow - built to bottom of
 74 Flow - built to bottom of
 75 Flow - built to bottom of
 76 Flow - built to bottom of
 77 Flow - built to bottom of
 78 Flow - built to bottom of
 79 Flow - built to bottom of
 80 Flow - built to bottom of
 81 Flow - built to bottom of
 82 Flow - built to bottom of
 83 Flow - built to bottom of
 84 Flow - built to bottom of
 85 Flow - built to bottom of
 86 Flow - built to bottom of
 87 Flow - built to bottom of
 88 Flow - built to bottom of
 89 Flow - built to bottom of
 90 Flow - built to bottom of
 91 Flow - built to bottom of
 92 Flow - built to bottom of
 93 Flow - built to bottom of
 94 Flow - built to bottom of
 95 Flow - built to bottom of
 96 Flow - built to bottom of
 97 Flow - built to bottom of
 98 Flow - built to bottom of
 99 Flow - built to bottom of
 100 Flow - built to bottom of

Test Successful: Y

CHART PAGE



This is a photocopy of the actual AK-1 recorder chart

TRILOBITE TESTING L.L.C.

OPERATOR : Harris Oil & Gas Corp. DATE 10-8-96
 NAME: Kilgore-Carrithers #1-4 KB 3477.00 ft TICKET NO: 8644 DST #3
 LOCATION : 4-29s-42w Stanton KS GR 3464.00 ft FORMATION: Keys
 INTERVAL : 5413.00 To 5443.00 ft TD 5443.00 ft TEST TYPE: CONV STRADDLE

WELL DATA

	Field	1	2	3	4	TIME DATA-----
30 Rec.	10333	10333	1055	2836		PF Fr. 0132 to 0202 hr
60 Range (Psi)	4075.0	4075.0	4050.0	3500.0	0.0	IS Fr. 0202 to 0302 hr
30 Clock (hrs)	12	12	12	12		SF Fr. 0302 to 0332 hr
60 Depth (ft)	5418.0	5418.0	5438.0	5667.0	0.0	FS Fr. 0332 to 0432 hr

	Field	1	2	3	4	
Initial Flow	2793.0	2743.0	0.0	0.0	0.0	T STARTED 2200 hr
First Flow	30.0	37.0	0.0	0.0	0.0	T ON BOTM 0130 hr
Final Flow	50.0	46.0	0.0	0.0	0.0	T OPEN 0132 hr
Initial Shut-in	1252.0	1249.0	0.0	0.0	0.0	T PULLED 0432 hr
Final Flow	50.0	56.0	0.0	0.0	0.0	T OUT 0745 hr
Initial Shut-in	60.0	64.0	0.0	0.0	0.0	
Final Flow	1221.0	1222.0	0.0	0.0	0.0	
Initial Hydro	2712.0	2727.0	0.0	0.0	0.0	
Flow/Outside	0	0	I	I		

TOOL DATA-----

Tool Wt. 0.00 lbs
 Wt Set On Packer 30000.00 lbs
 Wt Pulled Loose 120000.00 lbs
 Initial Str Wt 82000.00 lbs
 Unseated Str Wt 90000.00 lbs
 Bot Choke 0.75 in
 Hole Size 7.88 in
 D Col. ID 2.25 in
 D. Pipe ID 3.80 in
 D.C. Length 540.00 ft
 D.P. Length 5378.00 ft
 H.W. I.D 2.70 in

FLUID

Fluid 95.00 ft of 95.00 ft in DC and 0.00 ft in DP
 ft of Muddy Water
 ft of Watery Mud
 ft of
 ft of
 ft of
 ft of
 ft of
 ft of

DENSITY 6000.00 P.P.M. A.P.I. Gravity 0.00

MUD DATA-----

Mud Type Chem
 Weight 9.10 lb/cf
 Vis. 50.00 S/L
 W.L. 8.80 in3
 F.C. 0.00 in
 Mud Drop

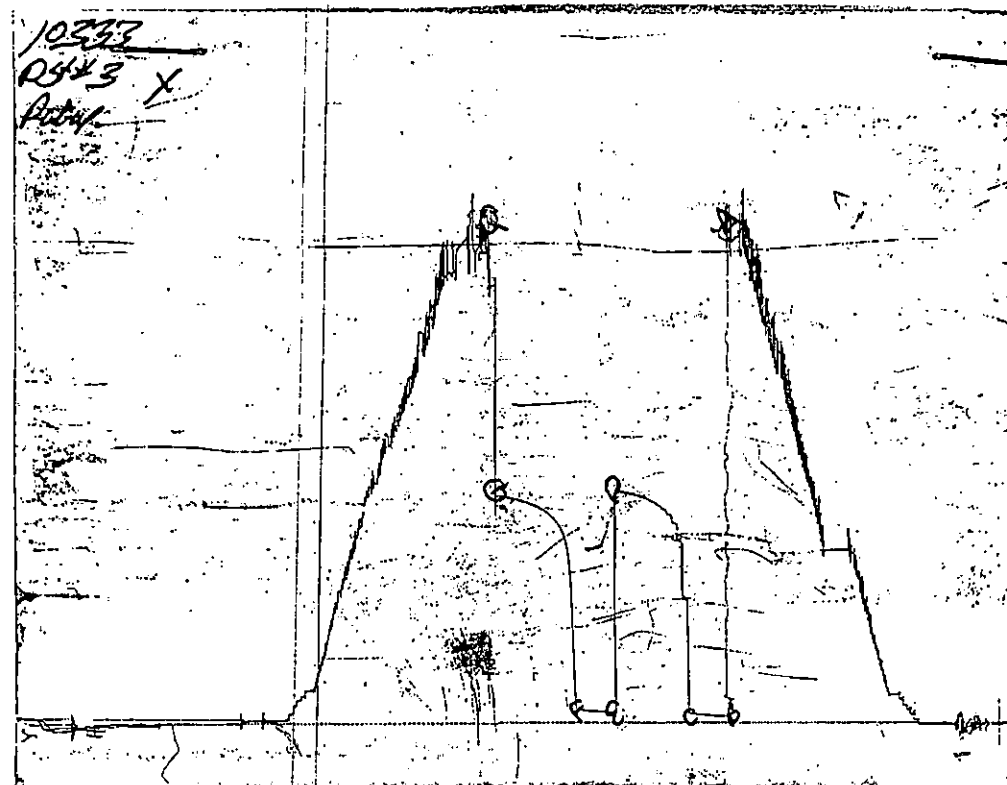
Amt. of fill 0.00 ft
 Btm. H. Temp. 124.00 F
 Hole Condition
 % Porosity 0.00
 Packer Size 6.75 in
 No. of Packers 3
 Cushion Amt. 0.00
 Cushion Type
 Reversed Out
 Tool Chased
 Tester MIke Colantonio
 Co. Rep. Roger Pearson
 Contr. Allen Drilling
 Rig # 5
 Unit #
 Pump T.

DESCRIPTION

TEST:
 RESULT:

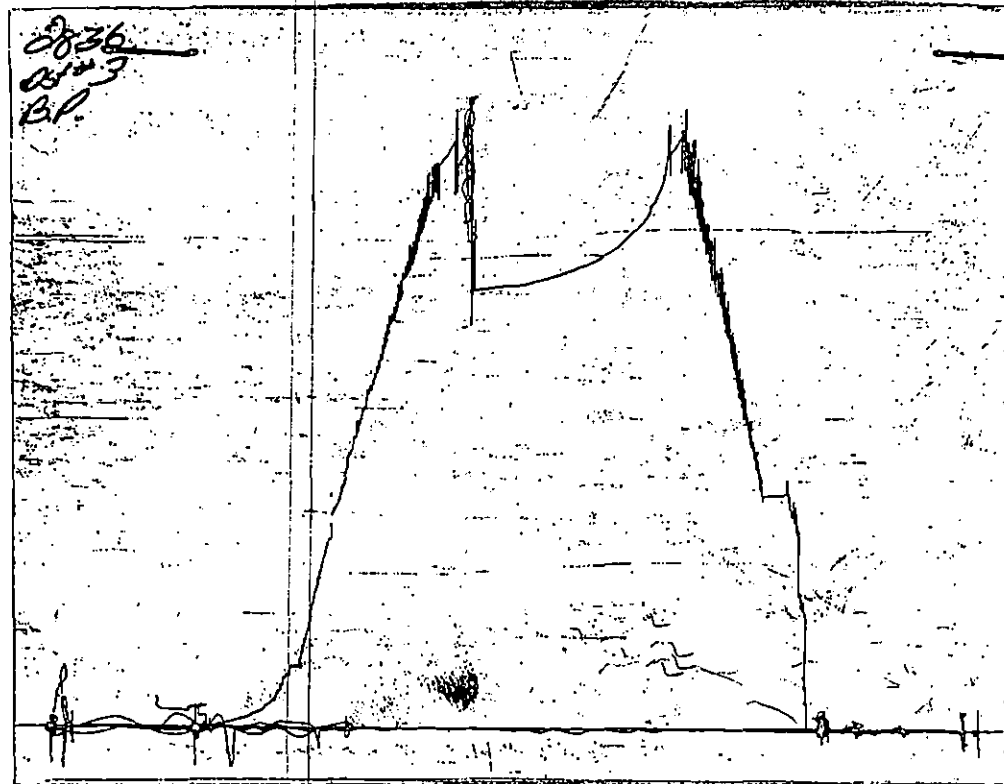
Test Successful: Y

CHART PAGE



This is a photocopy of the actual AK-1 recorder chart

CHART PAGE



This is a photocopy of the actual AK-1 recorder chart

ALLIED CEMENTING CO., INC. 7462

REMIT TO P.O. BOX 31
RUSSELL, KANSAS 67665

CONFIDENTIAL

ORIGINAL

SERVICE POINT:

OAKLEY

DATE <u>10-9-96</u>	SEC. <u>H</u>	TWP. <u>29S</u>	RANGE <u>H2W</u>	CALLED OUT	ON LOCATION <u>12:50 PM</u>	JOB START <u>4:00 PM</u>	JOB FINISH <u>6:30 PM</u>
LEASE <u>KILGORE</u>	WELL # <u>1-4</u>	LOCATION <u>JOHNSON 7W-25-1W</u>			COUNTY <u>STANTON</u>	STATE <u>KS</u>	

OLD OR NEW (Circle one)

CONTRACTOR <u>ALLEN DRILL RIGS</u>	OWNER <u>SAME</u>
TYPE OF JOB <u>PTA</u>	CEMENT
HOLE SIZE <u>7 7/8"</u>	T.D. <u>5660'</u>
CASING SIZE	DEPTH
TUBING SIZE	DEPTH
DRILL PIPE <u>4 1/2"</u>	DEPTH <u>1670'</u>
TOOL	DEPTH
PRES. MAX	MINIMUM
MEAS. LINE	SHOE JOINT
CEMENT LEFT IN CSG.	
PERFS.	

AMOUNT ORDERED 125 SKS 60/40 102 69 682

COMMON	<u>75 SKS</u>	@	<u>7 20/100</u>	<u>540</u>	<u>100</u>
POZMIX	<u>50 SKS</u>	@	<u>3 15/100</u>	<u>157</u>	<u>50</u>
GEL	<u>7 SKS</u>	@	<u>9 50/100</u>	<u>66</u>	<u>50</u>
CHLORIDE	<u>RUC</u>	@	<u>RELEASED</u>		

NOV 18	MAR 23 1998
CONFIDENTIAL	FROM CONFIDENTIAL
HANDLING @ <u>1 05/100</u>	<u>131.25</u>
MILEAGE <u>4¢ PER SK/MILE</u>	<u>160</u>

EQUIPMENT

PUMP TRUCK CEMENTER <u>TERRY</u>
<u>300</u> HELPER <u>WAYNE</u>
BULK TRUCK DRIVER <u>JEFF</u>
<u>218</u>
BULK TRUCK DRIVER
#

TOTAL 1055 25/100

REMARKS:

50 SKS AT 1670'
10 SKS AT 650'
10 SKS AT 40'
10 SKS MOUSE HOLE
15 SKS RAT HOLE

SERVICE

DEPTH OF JOB <u>1670</u>	
PUMP TRUCK CHARGE	<u>145 00</u>
EXTRA FOOTAGE @	
MILEAGE <u>32 MILES</u>	@ <u>2 85/100</u> <u>91 20</u>
PLUG <u>8 3/8 DRY HOLE</u>	@ <u>23 00</u> <u>23 00</u>

TOTAL 559 00

CHARGE TO: HARRIS OIL + GAS
STREET 1125 17th # 2290
CITY Denver STATE Colo ZIP 80202

FLOAT EQUIPMENT

	STATE COL DRILL & TBM REGISTRATION
	RECEIVED
	NOV 9 1996
	CONSERVATION DIVISION
	Victoria Kansas

TOTAL

TAX _____
TOTAL CHARGE 1372.28

DISCOUNT 15% IF PAID IN 30 DAYS
546 - TOTAL - 1614.45
15% DISC - 242.17

To Allied Cementing Co., Inc.
You are hereby requested to rent cementing equipment and furnish cementer and helper to assist owner or contractor to do work as is listed. The above work was done to satisfaction and supervision of owner agent or contractor. I have read & understand the "TERMS AND CONDITIONS" listed on the reverse side.

SIGNATURE

[Handwritten Signature]

ALLIED CEMENTING CO., INC. 6957

REMIT TO P.O. BOX 31
RUSSELL, KANSAS 67665

ORIGINAL

SERVICE POINT: Oakley

DATE <u>9/28/96</u>	SEC. <u>4</u>	TWP. <u>29S</u>	RANGE <u>42W</u>	CALLED OUT	ON LOCATION <u>10:00 AM</u>	JOB START <u>6:30</u>	JOB FINISH <u>1:45 AM</u>
LEASE <u>Carithers</u>	WELL# <u>1-4</u>	LOCATION <u>Jolterson City 7W 2S 1W N/S</u>			COUNTY <u>Stanton</u>	STATE <u>Ks</u>	

OLD OR NEW (Circle one)

CONFIDENTIAL

CONTRACTOR <u>Allen Dily Rig #5</u>	OWNER <u>Same</u>
TYPE OF JOB <u>Cmt 8 3/4 Surface CSG</u>	CEMENT
HOLE SIZE <u>12 1/4</u>	T.D. <u>1647</u>
CASING SIZE <u>8 3/4</u>	DEPTH <u>1645</u>
TUBING SIZE	DEPTH
DRILL PIPE	DEPTH
TOOL	DEPTH
PRES. MAX <u>400</u>	MINIMUM <u>50</u>
MEAS. LINE	SHOE JOINT <u>41</u>
CEMENT LEFT IN CSG. <u>41</u>	
PERFS.	

AMOUNT ORDERED <u>60 sks Class A + 370 cacl²</u>	
<u>550 sks Lite + 370 cacl² 4" Flo-seal</u>	
<u>150 sks Class A + 370 cacl²</u>	
COMMON <u>210</u> SKS @ <u>7.20</u>	<u>1,512.00</u>
POZMIX @	
GEL @	
CHLORIDE <u>25</u> SKS @ <u>28.00</u>	<u>700.00</u>
<u>Lite - 550</u> SKS @ <u>6.65</u>	<u>3,657.50</u>
<u>Flo-Seal 138#</u> @ <u>1.15</u>	<u>158.70</u>
HANDLING <u>760</u> SKS @ <u>1.05</u>	<u>798.00</u>
MILEAGE <u>44 per SK/mile</u>	<u>972.80</u>

EQUIPMENT **RELEASED** **MAR 23 1998**

PUMP TRUCK # <u>191</u>	CEMENTER <u>Max</u>	HELPER <u>Wayne</u>
BULK TRUCK # <u>303</u>	DRIVER <u>JEFF</u>	
BULK TRUCK # <u>309</u>	DRIVER <u>Deane</u>	

FROM CONFIDENTIAL

KCC TOTAL 7,799.00

NOV 18

CONFIDENTIAL SERVICE

REMARKS:

Cmt 8 3/4 surface CSG with 550 sks Lite + 370 cacl²
4" Flo-seal + 150 sks Class A + 370 cacl² Drop Plug
Displace 103 BBL Lead Plug Float Held Cement
Did not Circulate Top off with 60 sks
Class A + 370 cacl² Cmt in Cellar

DEPTH OF JOB <u>1645</u>	
PUMP TRUCK CHARGE	<u>1,030.00</u>
EXTRA FOOTAGE @	
MILEAGE <u>32 miles</u> @ <u>2.85</u>	<u>91.20</u>
PLUG <u>8 3/4 Rubber Plug</u> @	<u>90.00</u>

TOTAL 1,211.20

CHARGE TO: Harris Oil + Gas Co.
 STREET 1125 17th ST., Suite # 2290
 CITY Denver STATE Co. ZIP 80202

FLOAT EQUIPMENT

<u>1-8 3/4 Tex. Pattern Shoe</u> @	<u>286.00</u>
<u>1-8 3/4 AFU Inset</u> @	<u>358.00</u>
<u>3-8 3/4 Centralizers</u> @ <u>61.00</u>	<u>183.00</u>
<u>1-8 3/4 Cement Basket</u> @	<u>200.00</u>
<u>1 Thread Lock</u> @	<u>30.00</u>

TOTAL 1,057.00

TAX _____

TOTAL CHARGE _____

DISCOUNT _____ IF PAID IN 30 DAYS

To Allied Cementing Co., Inc.
 You are hereby requested to rent cementing equipment and furnish cementer and helper to assist owner or contractor to do work as is listed. The above work was done to satisfaction and supervision of owner agent or contractor. I have read & understand the "TERMS AND CONDITIONS" listed on the reverse side.

SIGNATURE _____

[Handwritten Signature]

RECEIVED
 STATE DEPARTMENT OF REVENUE
 NOV 20 1996
 CONSERVATION DIVISION
 Wichita, Kansas