

STATE OF KANSAS  
STATE CORPORATION COMMISSION  
200 Colorado Derby Building  
Wichita, Kansas 67202

WELL PLUGGING RECORD  
K.A.R.-82-3-117

API NUMBER 15-189-20694 -0002

LEASE NAME Boles#1 Unit

WELL NUMBER #3

TYPE OR PRINT  
NOTICE: Fill out completely  
and return to Cons. Div.  
office within 30 days.

151 FNL Ft. from Section Line

1926 FEL Ft. from E Section Line

SEC. 26 TWP. 35 RGE. 35 (E) or (W)

COUNTY Stevens

LEASE OPERATOR Mobil Oil Corporation

ADDRESS 2319 N. Kansas Ave., P.O. Box 2173, Liberal, KS 67905-2173

PHONE# (316) 626-1142 OPERATORS LICENSE NO. 5208

Date Well Completed 10

Character of Well

Plugging Commenced 10-24-97

(Oil, Gas, D&A, SWD, Input, Water Supply Well)

Plugging Completed 10-24-97

The plugging proposal was approved on 10-22-97 (date)

by Steve Middleton - Dodge City Office. (KCC District Agent's Name).

Is ACO-1 filed? Yes If not, is well log attached? No

Producing Formation Depth to Top 6258 Bottom 6264 T.D. 6380

Show depth and thickness of all water, oil and gas formations.

OIL, GAS OR WATER RECORDS

CASING RECORD

11-12-97

Formation	Content	From	To	Size	Put in	Pulled out
	CIBP	6190				
	CIBP	2910				
	Perforated	1790	0	Circulated	520 sx cemet.	to surface.

Describe in detail the manner in which the well was plugged, indicating where the mud pill was placed and the method or methods used in introducing it into the hole. If cement or other plugs were used, state the character of same and depth placed, from feet to feet each set. Producing zone 6258-64 - CIBP @ 6190 w/2 sx cmt on top. Another CIBP set @ 2910 w/2 sx cmt on top. Perforated 5 1/2" casing @ 1790' and circulated 520 sx of 60/40 poz mix w/6% gel down 5 1/2" and into 9 5/8" surface. Circulated go to pit. Dug down and cut off surface and production string and capped 5' below surface.

(If additional description is necessary, use BACK of this form.)

Name of Plugging Contractor Dowell License No.

Address Ulysses, KS

NAME OF PARTY RESPONSIBLE FOR PLUGGING FEES: Mobil Oil Corporation, P.O. Box 2173, Liberal, KS 67905-2173.

STATE OF Kansas COUNTY OF Seward, ss.

(Employee of Operator) or (Operator) of above-described well, being first duly sworn on oath, says: That I have knowledge of the facts, statements, and matters herein contained and the log of the above-described well as filed that the same are true and correct, so help me God.

(Signature) Sharon A. Cook

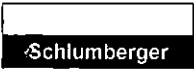
(Address) 2319 N. Kansas Ave., Liberal, KS 67950-2173



SUBSCRIBED AND SWORN TO before me this 10th day of November, 19 97

Lynne K. Hunt  
Notary Public

My Commission Expires: February 20, 2001



# Cementing Service Report

Customer <b>MOBIL OIL CORP</b>	Job Number <b>20027088</b>
-----------------------------------	-------------------------------

Well <b>Boles 1 2</b>		Location (legal) <b>sec. 26-32s-35w</b>		Dowell Location <b>Ulysses, KS</b>		Service Date <b>10/24/97</b>		
Field <b>Hugoton</b>		Formation Name/Type		Deviation <b>0 °</b>	Bit Size <b>0 in</b>	Well MD <b>1,775 ft</b>	Well TVD <b>1,775 ft</b>	
County <b>Stevens</b>		State/Province <b>Kansas</b>		BHP <b>0 psi</b>	BHST <b>0 °F</b>	BHCT <b>0 °F</b>	Poro Press. Gradient <b>0 psi/ft</b>	
Rig Name		Drilled For <b>Oil</b>	Service Via <b>Land</b>	<b>Casing/Liner</b>				
Offshore Zone		Well Class <b>Old</b>	Well Type <b>Workover</b>	Depth, ft <b>1775</b>	Size, in <b>5.5</b>	Weight, lb/ft <b>15.5</b>	Grade <b>K55</b>	
Drilling Fluid Type		Max. Density <b>0 lb/gal</b>	Plastic Viscosity <b>0 cp</b>	<b>Tubing/Drill Pipe</b>				
Service Line <b>Cementing</b>		Job Type <b>Plug &amp; Abandon</b>		Depth, ft <b>0</b>	Size, in <b>0</b>	Weight, lb/ft <b>0</b>	Grade <b>0</b>	
Max. Allowed Tubing Pressure <b>0 psi</b>		Max. Allowed Ann. Pressure <b>0 psi</b>	WellHead Connection <b>5 1/2 casing swegd</b>	<b>Perforations/Open Hole</b>				
Service Instructions <b>safely cement as per customer request</b>				Top, ft <b>0</b>	Bottom, ft <b>0</b>	spf <b>0</b>	No. of Shots <b>0</b>	Total Interval <b>0 ft</b>
				0	0	0	0	Diameter <b>0 in</b>
				0	0	0	0	0
				Treat Down <b>Casing</b>	Displacement <b>42 bbl</b>	Packer Type	Packer Depth <b>0 ft</b>	
Tubing Vol. <b>0 bbl</b>	Casing Vol. <b>42.2 bbl</b>	Annular Vol. <b>85 bbl</b>	Open Hole Vol. <b>0 bbl</b>					
Casing/Tubing Secured <input checked="" type="checkbox"/>		1 Hole Volume Circulated prior to Cementing <input type="checkbox"/>		<b>Casing Tools</b>		<b>Squeeze Job</b>		
Lift Pressure: <b>psi</b>		Pipe Rotated <input type="checkbox"/>		Pipe Reciprocated <input type="checkbox"/>		Shoe Type:	Squeeze Type	
No. Centralizers: <b>0</b>		Top Plugs: <b>0</b>	Bottom Plugs: <b>0</b>	Shoe Depth: <b>0 ft</b>		Tool Type:	Tool Depth: <b>0 ft</b>	
Cement Head Type:		Stage Tool Type		Stage Tool Depth: <b>0 ft</b>		Tail Pipe Size: <b>0 in</b>	Tail Pipe Depth: <b>0 ft</b>	
Job Scheduled For:		Arrived on Location:	Leave Location:	Collar Type:		Collar Depth: <b>ft</b>	Sqz Total Vol: <b>0 bbl</b>	

Time	CumVol	Density	Pressure U1	TotFlowrate				Message
24 hr clock	bbl	ppg	psi	bpm				
12:33	0	0	0	0	0	0	0	START ACQUISITION
12:34	0	0	0	0	0	0	0	Start Job
12:34	0	0	0	0	0	0	0	Don't understand acq. device.
12:34	0	0	0	0	0	0	0	Acq. device not responding.
12:34	0	0	0	0	0	0	0	Don't understand acq. device.
12:34	0	0	0	0	0	0	0	Acq. device not responding.
12:34	0	0	0	0	0	0	0	Don't understand acq. device.
12:34	0	0	0	0	0	0	0	Acq. device not responding.
12:35	0	0	0	0	0	0	0	Don't understand acq. device.
12:35	0	0	0	0	0	0	0	Acq. device not responding.
12:35	0	0	0	0	0	0	0	Acq. device not responding.
12:35	0	0	0	0	0	0	0	Don't understand acq. device.
12:35	0	0	0	0	0	0	0	STOP ACQUISITION
12:40	0	-6.25	-3750	0	0	0	0	START ACQUISITION
12:41	.4693	8.406	-25.08	1.959	0	0	0	
12:41	1.962	8.399	-22.69	2.3	0	0	0	
12:42	3.51	8.395	-20.86	2.367	0	0	0	
12:43	5.203	8.364	-18.32	3.066	0	0	0	
12:43	7.326	8.377	-18.32	3.171	0	0	0	
12:44	9.475	8.379	-18.32	3.3	0	0	0	
12:45	11.75	8.379	-18.32	3.388	0	0	0	
12:45	14.02	8.38	-18.32	3.397	0	0	0	

Well			Field		Service Date		Customer		Job Number
Boles 1 #2			Hugoton		10/24/97		MOBIL OIL CORP		20027088
Time	CumVol	Density	Pressure U1	TotFlowrate				Message	
24 hr clock	bbl	ppg	psi	bpm					
12:46	16.31	8.364	-18.32	3.405	0	0	0		
12:47	18.6	8.365	-18.32	3.416	0	0	0		
12:47	20.88	8.37	-18.32	3.409	0	0	0		
12:48	23.17	8.371	-18.32	3.417	0	0	0		
12:49	25.46	8.354	-18.32	3.404	0	0	0		
12:49	27.75	8.371	-18.32	3.413	0	0	0		
12:50	29.93	8.372	205.6	2.876	0	0	0		
12:51	31.06	8.372	677.4	.1063	0	0	0		
12:51	31.07	8.393	370	2642E-9	0	0	0		
12:52	31.32	8.371	380.6	.7975	0	0	0		
12:53	31.96	8.377	675.3	1.018	0	0	0		
12:53	32.66	8.38	729.7	1.036	0	0	0		
12:54	33.34	8.385	746	1.069	0	0	0		
12:55	34.25	8.382	60.38	2.004	0	0	0		
12:55	35.95	8.393	54.71	2.802	0	0	0		
12:56	38.2	8.394	186.7	3.959	0	0	0		
12:57	40.87	8.394	186.8	3.968	0	0	0		
12:57	43.53	8.394	205.1	3.971	0	0	0		
12:58	46.19	8.394	228.7	3.971	0	0	0		
12:59	48.49	5.268	75.84	.4632	0	0	0		
12:59	48.52	.1787	52.4	1177E-8	0	0	0		
13:00	48.52	3126E-5	37.48	2993E-13	0	0	0		
13:01	48.52	3053E-5	36.63	7609E-18	0	0	0		
13:01	0	0	0	0	0	0	0	Start Cement Slurry	
13:01	49.83	8.855	197.5	3.958	0	0	0		
13:01	0	0	0	0	0	0	0	o	
13:02	0	0	0	0	0	0	0	[CumVol]=50.89 bbl	
13:02	0	0	0	0	0	0	0	Reset Volume	
13:02	1.53	13.24	220	3.97	0	0	0		
13:03	4.192	13.83	205.5	3.971	0	0	0		
13:03	6.856	13.98	179.5	3.971	0	0	0		
13:04	9.527	13.42	140.7	3.981	0	0	0		
13:05	12.19	13.46	112.9	3.971	0	0	0		
13:05	14.85	13.9	80.87	3.971	0	0	0		
13:06	17.52	13.91	51.27	3.971	0	0	0		
13:07	20.19	14.14	19.68	3.971	0	0	0		
13:07	22.85	13.9	8.606	3.978	0	0	0		
13:08	25.51	13.32	6.602	3.971	0	0	0		
13:09	28.18	13.9	5.193	3.971	0	0	0		
13:09	30.85	13.91	16.01	3.972	0	0	0		
13:10	33.51	14.1	9.199	3.974	0	0	0		
13:11	36.17	13.87	9.995	3.972	0	0	0		
13:11	38.98	13.88	10.14	4.434	0	0	0		
13:12	41.97	13.99	10.25	4.435	0	0	0		
13:13	44.96	13.79	13.27	4.472	0	0	0		
13:13	47.96	14.34	17.65	4.474	0	0	0		
13:14	50.96	13.71	11.47	4.502	0	0	0		
13:15	53.98	13.79	13.88	4.484	0	0	0		
13:15	56.99	13.78	13.81	4.497	0	0	0		
13:16	60	13.71	17.25	4.49	0	0	0		
13:17	63.01	13.93	18.28	4.492	0	0	0		
13:17	66.04	13.99	31.28	4.504	0	0	0		
13:18	69.05	13.9	80.04	4.493	0	0	0		
13:19	72.06	13.77	127.5	4.493	0	0	0		

19710121 11:51  
 10/24/97  
 2 11:51

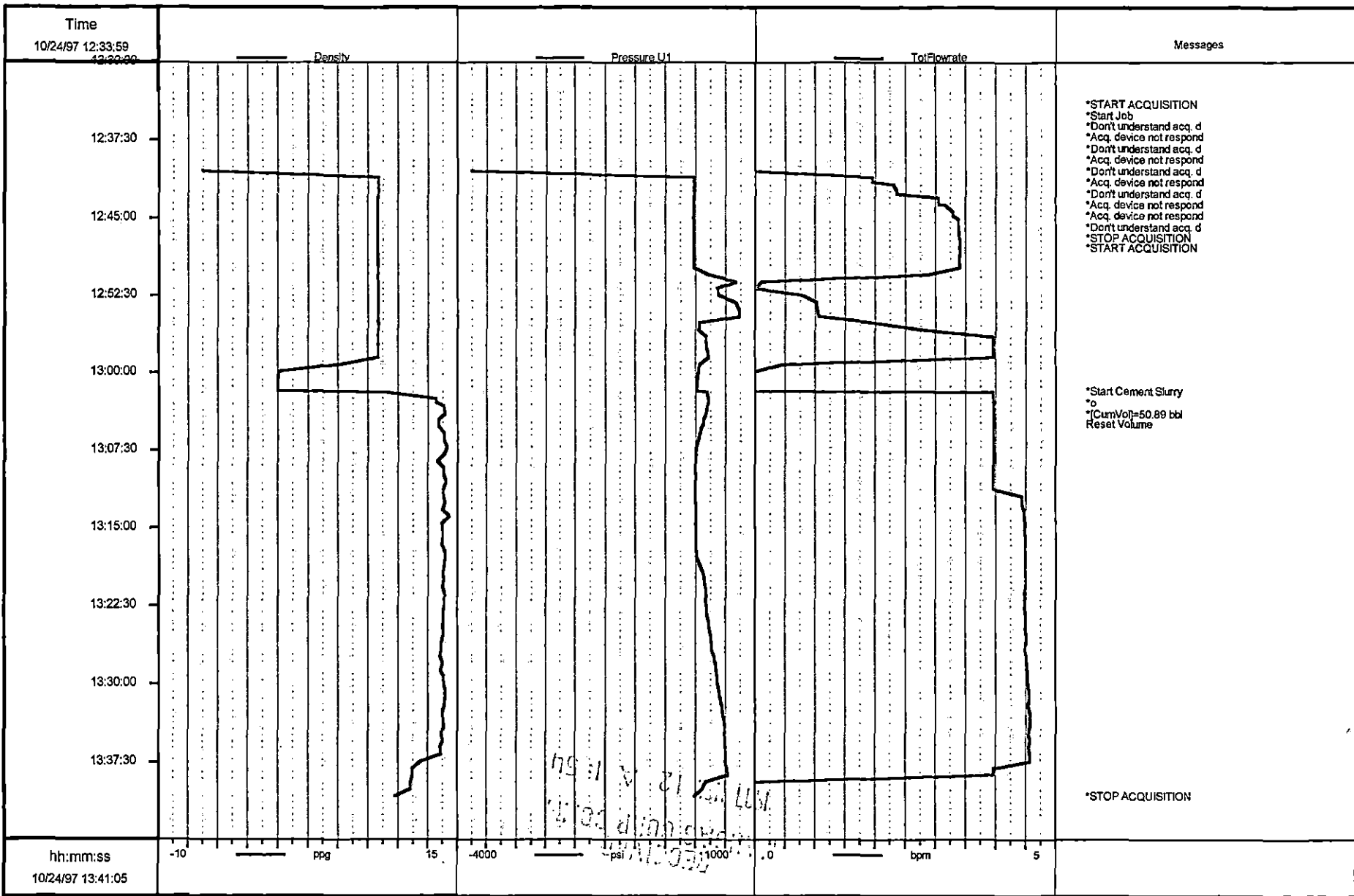
Well		Field			Service Date		Customer		Job Number	
Boles 1 #2		Hugoton			10/24/97		MOBIL OIL CORP		20027088	
Time	CumVol	Density	Pressure U1	TotFlowrate	Message					
24 hr clock	bbl	ppg	psi	bpm						
13:19	75.07	13.88	146.4	4.497	0	0	0			
13:20	78.09	13.76	164.9	4.498	0	0	0			
13:21	81.1	13.92	173.9	4.48	0	0	0			
13:21	84.12	13.93	183.2	4.493	0	0	0			
13:22	87.13	13.89	197.4	4.489	0	0	0			
13:23	90.15	13.85	196.5	4.505	0	0	0			
13:23	93.17	13.83	224.4	4.51	0	0	0			
13:24	96.19	13.77	236.5	4.499	0	0	0			
13:25	99.22	13.83	255.7	4.518	0	0	0			
13:25	102.2	13.69	266.2	4.51	0	0	0			
13:26	105.3	13.69	278.4	4.492	0	0	0			
13:27	108.3	13.56	314.2	4.52	0	0	0			
13:27	111.3	13.77	337.9	4.514	0	0	0			
13:28	114.4	13.59	349.4	4.529	0	0	0			
13:29	117.4	13.87	365.7	4.54	0	0	0			
13:29	120.4	13.88	378.6	4.538	0	0	0			
13:30	123.5	14.01	397.4	4.564	0	0	0			
13:31	126.6	13.95	416	4.563	0	0	0			
13:32	129.6	13.91	436.4	4.542	0	0	0			
13:32	132.6	13.77	455.5	4.571	0	0	0			
13:33	135.7	13.78	479	4.579	0	0	0			
13:34	138.8	13.86	489.2	4.573	0	0	0			
13:34	141.8	13.67	495	4.55	0	0	0			
13:35	144.9	13.83	505	4.588	0	0	0			
13:36	147.9	13.61	510.7	4.557	0	0	0			
13:36	151	13.66	524.9	4.579	0	0	0			
13:37	154.1	11.96	506.7	4.578	0	0	0			
13:38	156.8	11.21	530.6	3.969	0	0	0			
13:38	159.5	11.24	558	3.971	0	0	0			
13:39	160	11.11	179.6	3906E-7	0	0	0			
13:40	160	11.05	121.9	9931E-12	0	0	0			
13:40	160	9.787	-7.557	2525E-16	0	0	0			

MOBILE OIL CORP  
 1977 NOV 12 A 1:54

**Post Job Summary**

Average Pump Rates, bpm				Volume of Fluid Injected, bbl				
Slurry	N2	Mud	Maximum Rate	Total Slurry	Mud	Spacer	N2	
0	0	0	0	0	0	0	0	
Treating Pressure Summary, psi				Breakdown Fluid				
Maximum	Final	Average	Bump Plug to Breakdown	Type	Volume	Density		
0	0	0	0		0 bbl	0 lb/gal		
Avg. N2 Percent	Designed Slurry Volume	Displacement		<input checked="" type="checkbox"/> Cement Circulated to Surface?	Volume	0 bbl		
0 %	0 bbl	0 bbl		<input checked="" type="checkbox"/> Washed Thru Perfs	To	0 ft		
Customer or Authorized Representative			Dowell Supervisor			<input type="checkbox"/> CirculationLost		<input checked="" type="checkbox"/> Job Completed
Tom Romero			JEFF DISEKER					

Well	BOLES 1-3	Client	MOBIL OIL
Field	HUGOTON	SIR No.	20027088
Country	USA	Job Date	10/24/97 12:33:59 PM



Job: boles13

10/24/1997 13:45