

ORIGINAL

5/24/90 RELEASED

SIDE ONE

OCT 8 1990

STATE CORPORATION COMMISSION OF KANSAS
OIL & GAS CONSERVATION DIVISION
WELL COMPLETION OR RECOMPLETION FORM
ACO-1 WELL HISTORY
DESCRIPTION OF WELL HISTORY

API No. 15- 189-21320-0000

FROM CONFIDENTIAL

COUNTY STEVENS

APPROX C NW Sec 17 Twp 31S Rge 35 East X West

3960 Ft North from Southeast Corner of Section
4111 Ft West from Southeast Corner of Section
(Note: Locate well in section plat below)

Operator: License # 5208
Name MOBIL OIL CORPORATION
Address P.O. BOX 5444

Lease Name JUANITA F. PHILLIPS UNIT WELL # 5

City/State/Zip DENVER, COLORADO 80217

Field Name CAVE, WEST

Purchaser SOLD ON SPOT MARKET, TRANSPORTER
WILLIAMS BROS.

Producing Formation MORROW

Operator Contact Person B. R. MAYNARD
Phone (303) 298-2069

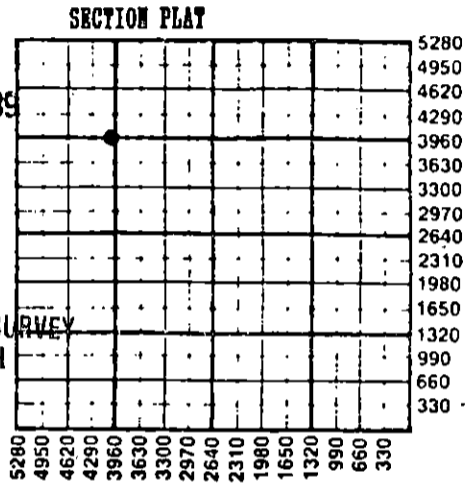
Elevation: Ground 2991' KB 3007'

Contractor: License # 9137
Name UNIT DRILLING & EXPLORATION CO.

Wellsite Geologist DEAN DUBOIS
Phone (303) 298-3742

Designate Type of Completion
XX New Re-Entry Workover
Oil SWD Temp Abd
XX Gas Inj Delayed Comp.
Dry Other (Core, Water Supply, etc.)

If ONWO: old well info as follows;
Operator
Well Name
Comp. Date



MTI
10-8-90

Disposition of Produced Water: XX Disposal
Docket # 11793 Repressuring

Questions on this portion of ACO-1 call:
Water Resources Board (913) 296-3717
Source of Water:
Division of Water Resources Permit# T 89-115

XX Groundwater 2575 Ft. North from Southeast Corner
(well) 5150 Ft. West from Southeast Corner of
Sec 17 Twp 31S Rge 35 East X West

Surface Water Ft. North from Southeast Corner
(Stream, pond etc) Ft. West from Southeast Corner
Sec Twp Rge East West

Other (explain)
(purchased from city, R.W.D. #)

WELL HISTORY
Drilling Method:
XX Mud Rotary Air Rotary Cable

3/10/89 3/17/89 3/25/89
Spud Date Date Reached TD Completion Date

6237' 6188'
Total Depth PBYD

Amount of Surface Pipe Set and Cemented at 1803 feet
Multiple Stage Cementing Collar Used? XX Yes No
If yes, show depth set 3240 feet
If alternate 2 completion, cement circulated
from NA feet depth to w/ SX cnt
Cement Company Name HOWCO
Invoice #

INSTRUCTIONS: This form shall be completed in triplicate and filed with the Kansas Corporation Commission, 200 Colorado Derby Building, Wichita, Kansas 67202, within 120 days of the spud date of any well. Rule 82-3-130, 82-3-107, and 82-3-106 apply.
Information on side two of this form will be held confidential for a period of 12 months if requested in writing and submitted with the form. See rule 82-3-107 for confidentiality in excess of 12 months.
One copy of all wireline logs and drillers time log shall be attached with this form. Submit ~~cp-111~~ with all plugged wells. Submit cp-111 from with all temporarily abandoned wells.

STATE CORPORATION COMMISSION
OIL & GAS CONSERVATION DIVISION
WICHITA
MAY 24 1990
5-24-89

All requirements of statutes, rules and regulations promulgated to regulate the oil and gas industry have been fully complied with and the statements herein are complete and correct to the best of my knowledge.

Signature B. R. Maynard B. R. MAYNARD

Title REGULATORY COMPLIANCE MANAGER Date 5-22-89

Subscribed and sworn to before me this 22nd day of May 1989
Notary Public George George

Date Commission Expires 4/3/91

K.C.C. OFFICE USE ONLY
 Letter of Confidentiality Attached
 Wireline Log Received
 Drillers Time Log Received
Distribution
 ACC SWD/Rep NGPA
 XGS Plug Other
(Specify)

SIDE TWO

Operator Name MOBIL OIL CORPORATION

Lease Name JUANITA F. PHILLIPS

Well # 5

RELEASED

Sec 17 Twp 31S Rge 35 East XX West

County STEVENS

OCT 8 1990

WELL LOG

INSTRUCTIONS: Show important tops and base of formations penetrated. Detail all cores. Report all drill stem tests giving interval tested, time tool open and closed, flowing and shut-in pressures, whether shut-in pressure reached static level, hydrostatic pressures, bottom hole temperature, fluid recovery, and flow rates if gas to surface during test. Attach extra sheet if more space is needed. Attach copy of log.

FROM CONFIDENTIAL

Drill Stem Tests Taken ___ Yes X No
Samples Sent to Geological Survey X Yes ___ No
Cores Taken ___ Yes X No

Formation Description
XX Log ___ Sample

Table with 3 columns: Name, Top, Bottom. Rows include CHASE, COUNCIL GROVE, ADMIRE, HREBNER, CHEROKEE, MORROW, CHESTER, ST. GENEVIEVE, ST. LOUIS.

CASING RECORD

XX New ___ Used

Report all strings set-conductor, surface, intermediate, production, etc.

Table with 8 columns: Purpose of String, Size Hole Drilled, Size Casing Set (in. O.D.), Weight Lbs/Ft., Setting Depth, Type of Cement, # Sacks Used, Type and Percent Additives. Rows for Surface and Production.

PERFORATION RECORD

Acid, Fracture, Shot, Cement Squeeze Record (Amount and Kind of Material Used)

Table with 3 columns: Shots Per Foot, Specify Footage of Each Interval Perforated, Depth. Row for 4 SPF at 5595' - 5611'.

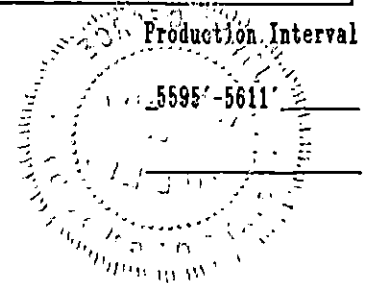
TUBING RECORD Size 2-7/8" Set At 5528' Packer At 5529' Liner Run ___ Yes XX No

Producing Method XX Flowing ___ Pumping ___ Gas Lift ___ Other (explain)

Table with 5 columns: Oil, Gas, Water, Gas-Oil Ratio, Gravity. Row for Estimated Production Per 24 Hours.

METHOD OF COMPLETION

Disposition of gas: ___ Vented X Sold ___ Used on Lease
___ Open Hole XX Perforation
___ Other (Specify)
___ Dually Completed
___ Coningled



ORIGINAL

OPERATOR: MOBIL OIL CORPORATION
FIELD: KS HINSHAW COUNTY: STEVENS
WELL: JF PHILLIPS UT 5 SECTION: 17-31S-35W
API NO. 1518921320

RELEASED

OCT 8 1990

FROM CONFIDENTIAL

DATE REMARKS

89 MAR 10 SPUD WELL; DRILLED FROM 70' TO 1168'
SERVICE RIG
DRILLED FROM 1168' TO 1803'
CIRC/COND TO RUN CSG
SURVEYED
TOH; LD DC
RU CSG CREW; RUN 8-5/8" CSG; SET AT 1803'

89 MAR 11 CIRC/COND BEFORE CEMENTING
CEMENT 8-5/8" CSG
WOC; FLOAT FAILED
CUT OFF CSG; WELD ON WELLHEAD; TEST TO 1000 PSI-OK
NU BOP; TEST BLIND RAMS; CHOKE MANIFOLD
MU BIT #2; TIH; BREAK CIRC
CHECK PUMPS & PUMP ON BIT
TOH; WASHED OUT NOZZLE IN BIT
W/O BIT
SERVICE RIG
TIH W/BIT #3
TEST PIPE RAMS; HYDRILL
DRILLING PLUG; 3' CEMENT; INSERT; 5' CEMENT
TEST SHOE JOINT; 1000 PSI-OK
DRILLING 29' CEMENT; 10' FORMATION
FORMATION INTEGRITY TEST TO 475 PSI
DRILLED FROM 1813' TO 2205'
RIG SERVICE
DRILLED FROM 2205' TO 2598'

89 MAR 12 DRILLED FROM 2598' TO 2643'
SERVICE RIG
DRILLED FROM 2643' TO 3060'
SERVICE RIG
DRILLED FROM 3060' TO 3380'
SERVICE RIG
DRILLED FROM 3380' TO 3715'

89 MAR 13 DRILLED FROM 3715' TO 3785'
RIG SERVICE
DRILLED FROM 3785' TO 4135'
SERVICE RIG
DRILLED FROM 4135' TO 4475'
SERVICE RIG
DRILLED FROM 4475' TO 4680'

89 MAR 14 SURVEYED
TOH FOR BIT
FINISH RT FOR NB; 3' FILL
DRILLED TO 4890'
RIG SERVICE
DRILLED FROM 4890' TO 5126'
RIG SERVICE
DRILLED FROM 5126' TO 5305'

KANSAS GEOLOGICAL SURVEY
WICHITA BRANCH

RECEIVED
STATE COMMISSION
STATE CORPORATION
MAY 24 1989
MAY 24 1989
CONSERVATION DIVISION
WICHITA, KANSAS

89 MAR 15 DRILLED TO 5330'
RIG SERVICE
DRILLED FROM 5330' TO 5574'; DRLG BREAK 5564' TO 74'; REDUCE
CIRC BTMS UP FOR SAMPLES; ORDERED TO DST INTERVAL 5564'-74'
SHORT TRIP 10 STDS; CHAIN OUT ABOVE MORROW SHALT; TITE AT
CIRC/COND MUD FOR DST #1
DROP SURVEY
COOH; PU TEST TOOLS; TIH; BTM PKR SEAT 8' OFF BTM; 1ST TRY TO

89 MAR 16 2ND SUCCESSFUL
BEGIN POH; LD TEST TOOLS; DST #1-MISRUN; CHARTS REGISTERED
RIG REPAIR
DRILLED TO 5590'
CIRC/COND MUD; POH FOR DST #2
PU TRILOBITE TEST TOOLS; TIH TO DST; FAILED 3 TIMES; POH;

ORIGINAL

RELEASED

OCT 8 1990

FROM CONFIDENTIAL

RECEIVED
STATE CORPORATION COMMISSION
STATE CORPORATION

MAY 9 4 1989

CONSERVATION DIVISION
Wichita, Kansas

ORIGINAL

OPERATOR: MOBIL OIL CORPORATION
FIELD: KS HINSHAW COUNTY: STEVENS
WELL: JF PHILLIPS UT 5 SECTION: 17-31S-35W
API NO. 1518921320

RELEASED

OCT 8 1989

FROM CONFIDENTIAL

DATE	REMARKS
----	-----
89 MAR 16	TIH W/BIT #6; BREAK CIRC
89 MAR 17	DRILLED FROM 5590' TO 5700' DRILLED TO 5720' RIG SERVICE DRILLED FROM 5720' TO 5931' RIG SERVICE DRILLED FROM 5931' TO 6100' RIG SERVICE DRILLED FROM 6100' TO 6240' (TD); 100' BELOW ST. LOUIS TOP
89 MAR 18	CIRC/COND MUD SHORT TRIP-10 STDS RIG SERVICE FINISH SHORT TRIP; NO DRAG; NO FILL CIRC & COND MUD FOR LOGS DROP SURVEY POH; COOH TO 5500'; SLM-NO CORRECTION RU TO LOG; RUN DIL/CNL/LDT/ML; RFTS; FMS; RD LOGGERS
89 MAR 19	TIH; BREAK CIRC AT 5300'; RESUME TIH RIG REPAIRS; BROKE SLIPS; 9 STDS OFF BTM; HYDROMATIC KICKED RESUME TIH CIRC & COND MUD POH; LD DP & DC RU TRI-STATE; RUN 5-1/2" CSG; SET AT 6237' INSTALL HEAD; CIRC & COND MUD; RU HOWCO CEMENT 5-1/2" CSG; 1ST STAGE CIRC & COND MUD THRU DV TOOL CEMENT 5-1/2" CSG; 2ND STAGE NO BOP; CUT OFF CSG JET PITS; RELEASED RIG

RECEIVED
STATE CORPORATION COMMISSION
STATE CORPORATION C

MAR 24 1989

CONSERVATION DIVISION
Wichita, Kansas

ORIGINAL

MOBIL OIL CORPORATION

DRILLING COMPLETION SUMMARY

RELEASED

OCT 8 1989

FROM CONFIDENTIAL

WELL: JF PHILLIPS UT 5
API: 1518921320
WELL TYPE: DEVELOPMENT

MATCH NUMBER: 891004

COORDINATES: 3960' FSL 4111' FEL
SECTION: 17-31S-35W
COUNTY: STEVENS
WELL SPUDDED: 89 MAR 10
REACHED TD: 89 MAR 18
RIG RELEASE: 89 MAR 19

FIELD: KS HINSHAW
STATE: KS

GROUND ELEVATION: 2991
KB ELEVATION: 3007
OBJECTIVE: MORROW
PROD. CASING DEPTH: 0

ADDITIONAL COMMENTS

05/16/89

RECEIVED
STATE CORPORATION COMMISSION

MAY 24 1989

CONSERVATION DIVISION
Wichita, Kansas

OPERATOR: MOBIL OIL CORPORATION
FIELD: KS HINSHAW COUNTY: STEVENS
WELL: JF PHILLIPS UT 5 SECTION: 17-31S-35W
API NO. 1518921320

ORIGINAL

RELEASED

OCT 8 1989

FROM CONFIDENTIAL

DATE

89 MAR 10 CASING_OD 8-5/8" TOP_CSG 0 SHOE_DEPTH 1803
CMT LEAD W/615 SX CLASS 'C'; 3% CACL; TAILED W/150 SX CLASS 'C';
CMT 2% CACL;GOOD DENSITY CONTROL ON LEAD SLURRY;SOME FLUCTUATION
CMT ON TAIL;NOT SEVERE;EVERYTHING WENT RELATIVELY WELL UNTIL THE
CMT FLOAT FAILED
CMT
CMT

89 MAR 19 CASING_OD 5-1/2" TOP_CSG 0 SHOE_DEPTH 6237
CMT LEAD W/330 SX CLASS 'H'; 50:50 POX W/2% TOT GEL; TAILED W/
CMT 475 SX CLASS 'G'; 50:50 POZ W/2% TOT GEL; 2% CACL
CMT
CMT
CMT
CMT

RECEIVED
STATE COORDINATION COMMISSION
STATE DEPARTMENT

MAY 24 1989

CONSERVATION DIVISION
Wichita, Kansas