

TOLAND & JOHNSTON INC.  
P. O. Box 94336  
Oklahoma City, Oklahoma 73109

RECEIVED  
STATE CORPORATION COMMISSION

MAY 19 1978  
5-19-1978

WELL RECORD

CONSERVATION DIVISION  
Wichita, Kansas

Date..... Date Promised.....  
 Company Ashland Exploration, Inc. Address 50 Penn Pl., Suite 1200, Okla. City, Ok. 73118  
 Farm Name J. L. Kirkpatrick Well No. 4  
 Location 1980' FWL & 660' FSL Section 33 Twp. 29S Rge. 34W  
 County Haskell State Kansas Field Name (if any) Eubank  
 Total Depth 5730' Plugged Back Total Depth 5729'  
 Plug Set CIBP - Baker @ 5313' Perforated See Below Under Remarks  
 Temperature Survey 8/6/78 Derrick Helmerich & Payne, Inc.

Casing Record:

Size	Amt. Set	Weight	Grade	Range	T & C	Cement	Size of Hole
8 5/8"	57Jts.	24#	J-55		ST&C	810 Sxs.	12 1/2"
5 1/2"	5754'	15.5#	J-55		LT&C	600 Sxs.	7 7/8"

Has Application to Plug been Mailed?.....

Remarks: Perforations:

Morrow (5251' - 5261') (5263' - 5267') (5269' - 5274') (5276' - 5288')

Chester (5324' - 5337') (5324' - 5353') (5357' - 5401')

Top of Cement - (Upper Stage - Estimated 1310') (Lower Stage - 3610')

Surface to be cemented by: Halliburton

Directions to Well:.....

Superintendent.....

Farm Boss.....

*Copy of this well record sent to Toland & Johnston*

Pumper.....

J. L. Kirkpatrick #4  
United Producing Company, Inc.  
Section 33-29S-34W  
Haskell County, Kansas

CASING RECORD:

57 Jts. 8-5/8" @ 1836' w/800 sxs. Pozmix & 6% Gel.  
166 Jts. 5-1/2" @ 5450'.

COMMENCED: 7-13-60

COMPLETED: 8-5-60

	<u>FROM</u>	<u>TO</u>
Surface Sand	0	790
Sand & Red Bed	790	1215
Red Bed	1215	1501
Red Bed & Anhydrite	1501	1836
Anhydrite & Lime	1836	2130
Shale	2130	2727
Shale & Lime	2727	4769
Lime	4769	4891
Lime & Shale	4891	5277
Lime	5277	5730
<u>TOTAL DEPTH</u>		<u>5730</u>

RECEIVED  
STATE CORPORATION COMMISSION

MAY 19 1978

CONSERVATION DIVISION  
Wichita, Kansas

STATE OF OKLAHOMA )  
                                  ) SS  
County of Tulsa        )

I hereby affirm that the above and foregoing is a true and correct copy of the log of the J. L. Kirkpatrick #4 well, located in Section 33-29S-34W, Haskell County, Kansas.

HELMERICH & PAYNE, INC.

*Lee Daniel*  
\_\_\_\_\_  
Vice President

Subscribed and sworn to before me a Notary Public this 17th day of August, 1960.

*Margaret Bailey*  
\_\_\_\_\_  
Notary Public

My commission expires:  
March 30, 1964



# AACE MUD COMPANY

PHONE MAIN 4-2101  
LIBERAL, KANSAS

WELL FILE

## TEMPERATURE LOG

DATE	AUGUST 6, 1960	COMPANY	UNITED PRODUCING COMPANY, INC.
LOG NO.	31 & #2	WELL	I L KIRKPATRICK #4
INSTRUMENT NO.	278	FIELD	
RECORDED BY	BARRINGTON	COUNTY STATE	HASKELL, KANSAS
WITNESSED BY	KELSAY	LOCATION	
LOG MEAS FROM	K. B.	TOTAL DEPTH	5450'
FIRST STAGE 300 SKS POZMIX 1/2# FLOCITE		CASING	5 1/2"
SECOND STAGE 300 SKS COMMON 1/2# FLOCITE		BORE HOLE	7 7/8"

RECEIVED  
STATE CORPORATION COMMISSION

MAY 19 1978

CONSERVATION DIVISION  
Wichita, Kansas

DEPTH	TEMPERATURE °F.						
	80°	90°	100°	110°	120°	130°	140°
500'							
600'							
700'							
800'							
900'							
1000'							
1100'							
1200'							
1300'							

ESTIMATED OF CEMENT 1500'

1300'

EST. AMT. OF CEMENT 1310'

1400'

1500'

1600'

1700'

1800'

1900'

2000'

2100'

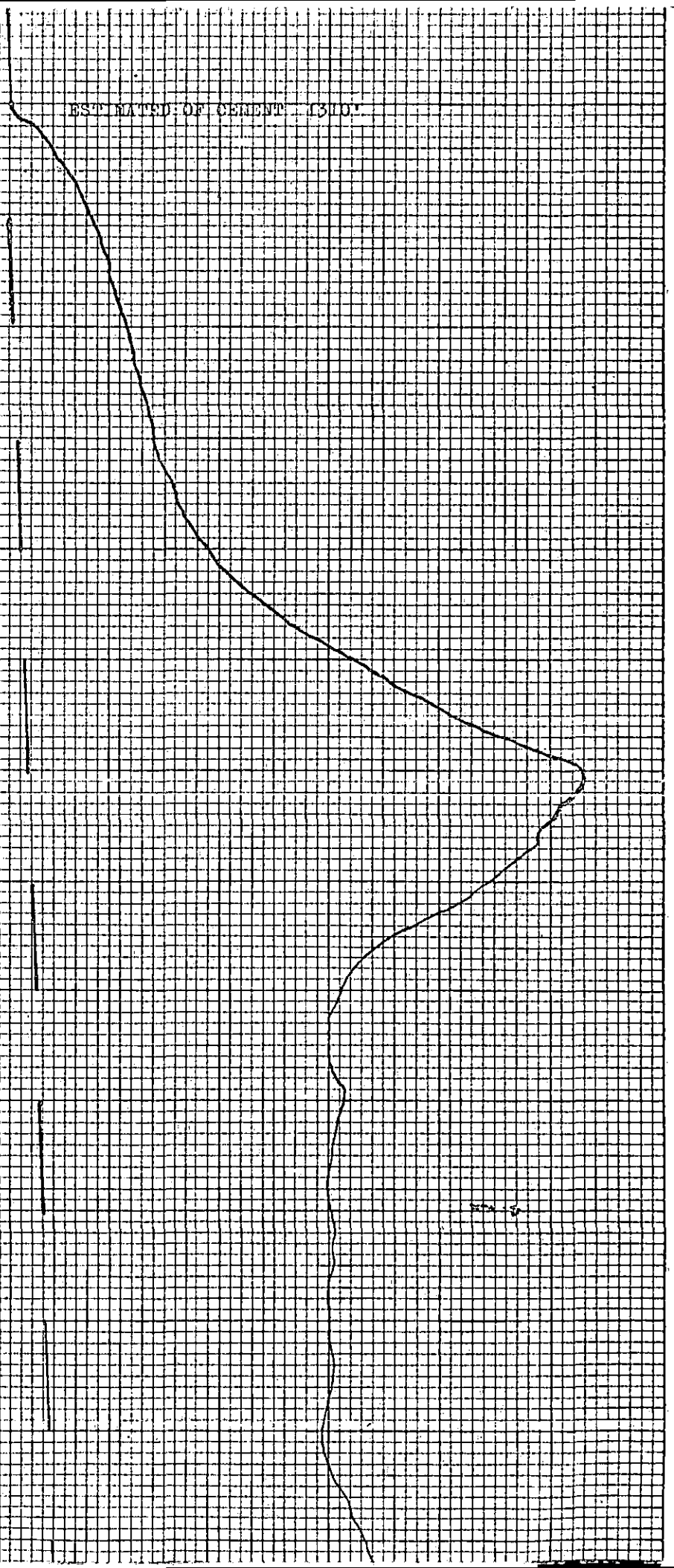
2200'

2300'

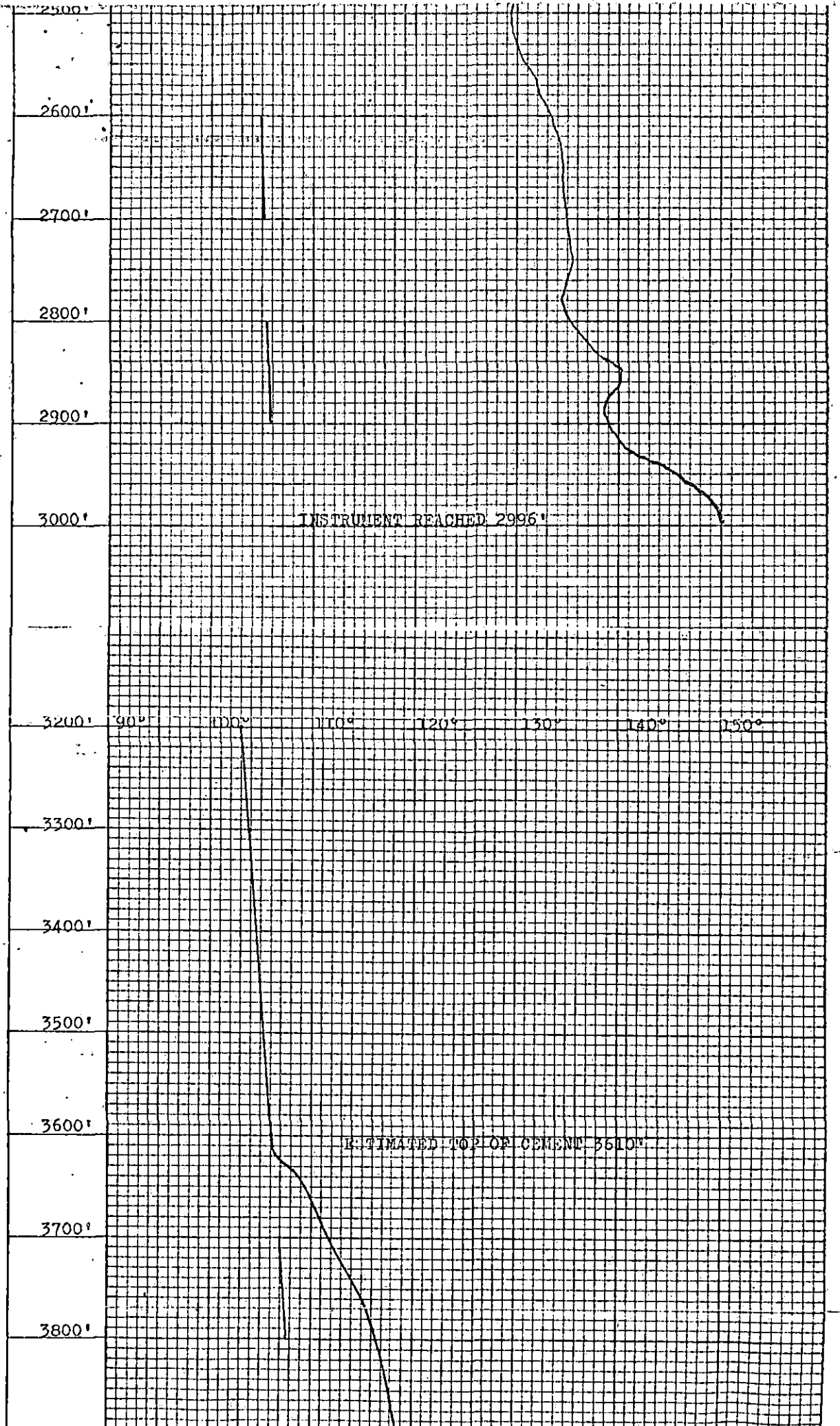
2400'

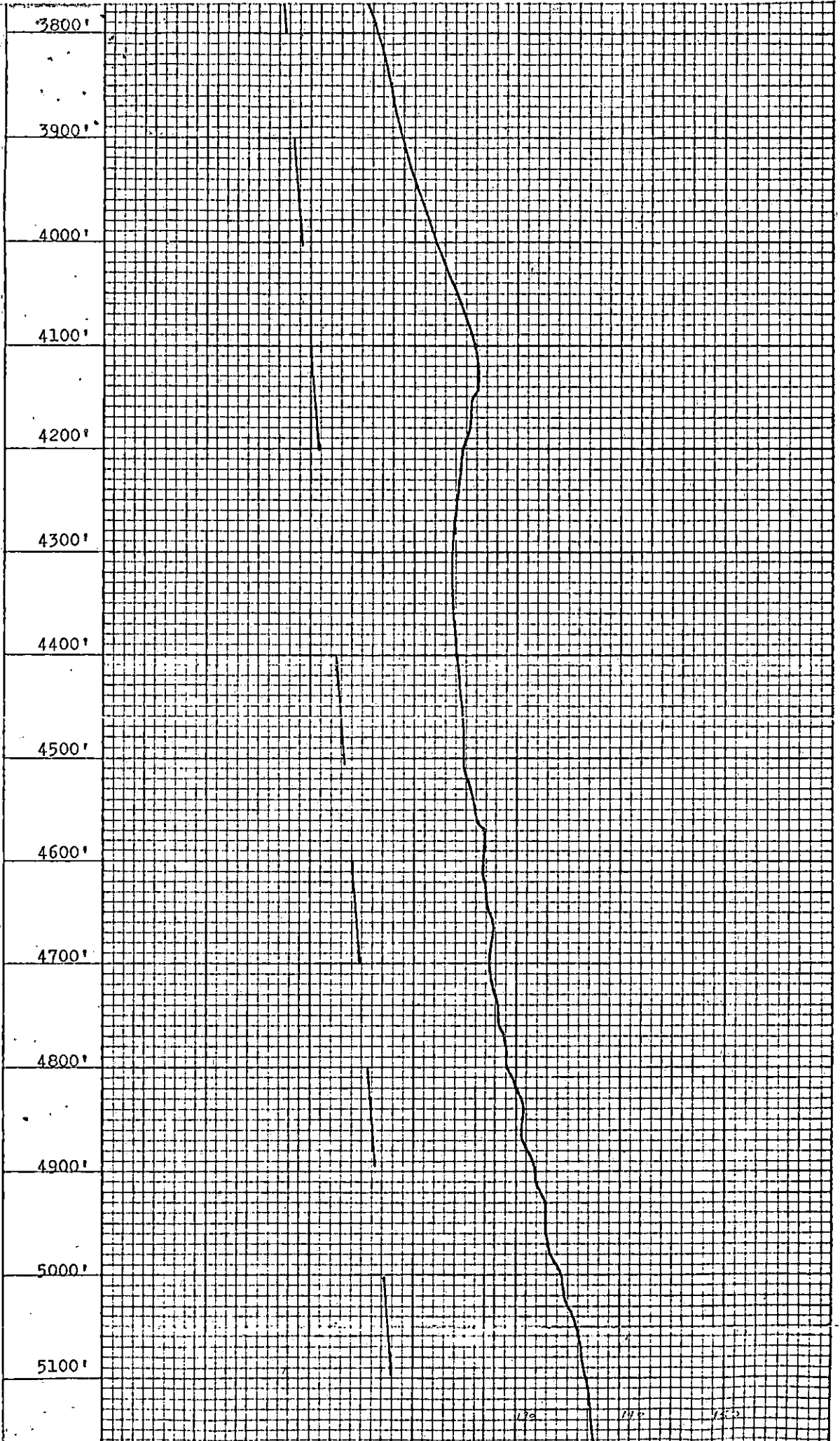
2500'

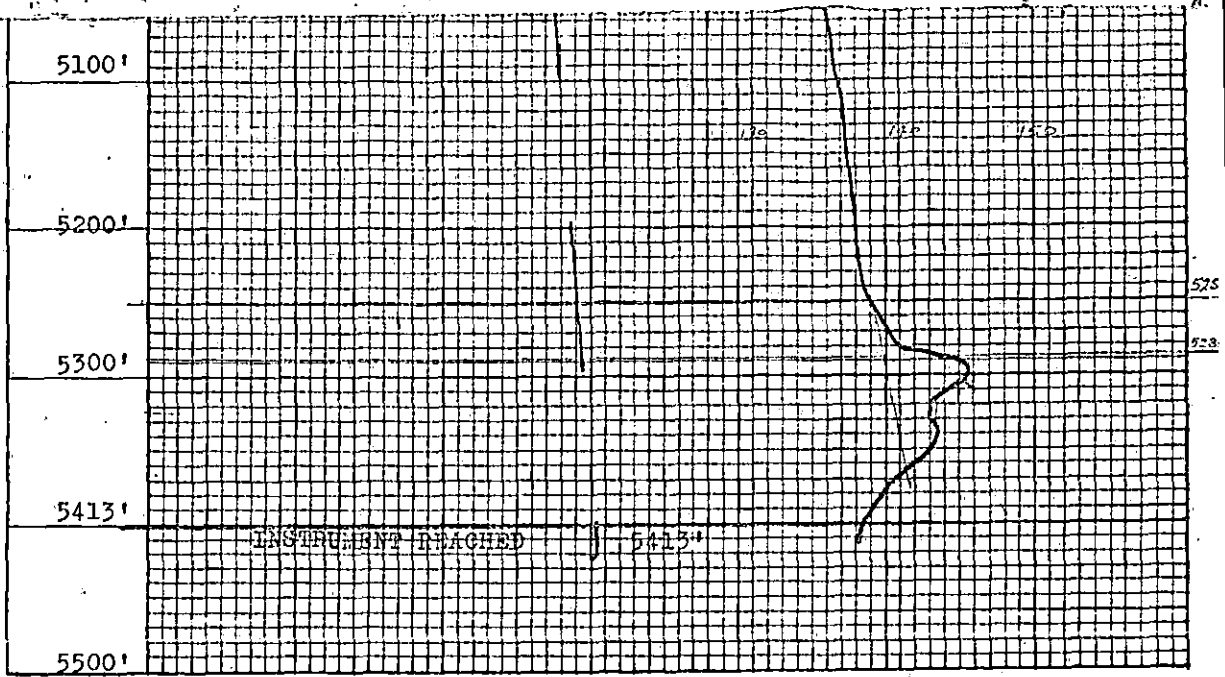
2600'



57X-5







RECEIVED

MAY 17 1978

ASHLAND OIL, INC.  
Stations, Kansas