

Key District - Bottom Plug only. Well is TAD 8/24/01 ab.

STATE OF KANSAS
STATE CORPORATION COMMISSION
130 S. MARKET, ROOM 2078
WICHITA, KANSAS 67202

WELL PLUGGING RECORD
K.A.R. -82-3-117

API NUMBER 9/21/62

LEASE NAME Robbins

WELL NUMBER #1- 6

3960 Ft. from S. Section Line

4290 Ft. from E. Section Line

SEC. 6 TWP. 31 RGE. 16 (E) or (W)

COUNTY COMANCHE

Date Well Completed 6/15/1965

Plugging Commenced 09/30/2000

Plugging Completed 09/30/2000

15-033-10031-00-00

TYPE OR PRINT
NOTICE: Fill out completely and
return to Cons. Div. office
within 30 days.

6-27-01

LEASE OPERATOR OIL PRODUCERS, INC. OF KANSAS

ADDRESS P.O. BOX 8647, WICHITA, KS. 67208

PHONE# (316) 681-0231 OPERATOR LICENSE NO. 8061

Character of Well D & A GAS

(Oil, Gas, D&A, SWD, Input, Water Supply Well)

The Plugging proposal was approved on 9/2000 (date)

by STEVE DURRANT (KCC District Agent's Name).

Is ACO-1 filed? YES If not, is well log attached?

Producing Formation Mississippi chert Depth to Top 4841 Bottom 4867 T.D. 4628

Show depth and thickness of all water, oil and gas formations.

OIL, GAS OR WATER RECORDS

CASING RECORD

Formation	Content	From	To	Size	Put in	Pulled out
Surface		0	503	8 5/8	503	0
Production		0	4921	4 1/2"	4921	0

Describe in detail the manner in which the well was plugged, indicating where the mud fluid was placed and the method or methods used in introducing it into the hole. If cement or other plug were used, state the character of same and depth placed, from feet to feet each set Per attached Acid Services LLC Treatment report and invoice 997

Name of Plugging Contractor Acid Services, LLC License No.

Address 10244 NE Highway 61, Pratt, Ks. 67124

NAME OF PARTY RESPONSIBLE FOR PLUGGING FEES: OIL PRODUCERS, INC. OF KANSAS

STATE OF KANSAS COUNTY OF SEDGWICK, ss.

JOHN S. WEIR, OPERATOR (Employee of Operator) or

(Operator) on above-described well, being first duly sworn on oath, says: That I have knowledge of the facts, statements, and matters herein contained and the log of the above-described well as filed that the same are true and correct, so help me God.

(Signature) John S. Weir
(Address) P.O. BOX 8647, WICHITA, KS. 67208

SUBSCRIBED AND SWORN TO before me this 25th day of June, 2001

Notary Public

My Commission Expires: Jan. 12, 2004

Post-it® Fax Note 7671

Date 8-24	# of pages 34
To Michelle	From Amy
Co./Dept.	Co.
Phone #	Phone #
Fax #	Fax #

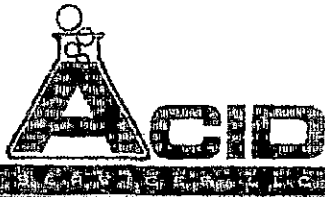
Form CP-4
Revised 05-88

RECEIVED
KANSAS CORPORATION COMMISSION

JUN 27 2001

CONSERVATION DIVISION

OR



TREATMENT REPORT 02502

Customer ID	Date	
Customer <i>OIL PRODUCERS INC. OF KS</i>	<i>9-28-00</i>	
Lease <i>REBBENS</i>	Lease No.	Well # <i>1</i>
Field Order # <i>02622</i>	Station <i>PRATT, KS.</i>	Casing <i>4 1/2</i>
Type Job <i>PA - OLD WELL</i>	Depth <i>4921</i>	County <i>COMANCHE</i>
		State <i>KS</i>
	Formation	Legal Description <i>6-31S-16W</i>

PIPE DATA		PERFORATING DATA		FLUID USED		TREATMENT RESUME		
Casing Size <i>4 1/2</i>	Tubing Size	Shots/Ft		Annul <i>50 SACS. COMMON</i>		RATE	PRESS	ISIP
Depth	Depth	From <i>4841</i>	To <i>4843</i>	Annul <i>100# HULLS</i>		Max		5 Min.
Volume	Volume	From <i>4861</i>	To <i>4865</i>	Prod		Min		10 Min.
Max Press	Max Press	From	To	Frac		Avg		15 Min.
Well Connection	Annulus Vol.	From	To			Hi-PP Used		Annulus Pressure
Plug Depth <i>4921</i>	Packer Depth	From	To	Flush		Gas Volume		Total Load

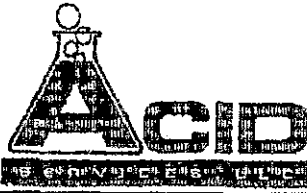
Customer Representative <i>B. SROOKY</i>	Station Manager <i>D. AUTRY</i>	Treater <i>H. GARDNER</i>
---------------------------------------------	------------------------------------	------------------------------

Service Units	<i>107</i>	<i>23</i>	<i>31</i>	<i>71</i>
---------------	------------	-----------	-----------	-----------

Time	Casing Pressure	Tubing Pressure	Bits Pumped	Rate	Service Log
<i>1400</i>					<i>ON LOCATION</i>
					<i>HOOK UP TO 4 1/2 - 11.6" CASING</i>
	<i>100</i>		<i>10</i>	<i>2</i>	<i>MIX 50 SACS. COMMON CEMENT WITH 100# HULLS.</i>
	<i>UAC</i>				<i>SHUT DOWN</i>
	<i>UAC</i>		<i>0</i>	<i>6</i>	<i>RELEASE 4 1/2 RUBBER PLUG</i>
			<i>55</i>	<i>6</i>	<i>START DESP</i>
	<i>1000</i>		<i>55</i>	<i>2</i>	<i>CRAIGHT PRESSURE</i>
	<i>1050</i>		<i>65</i>	<i>1 1/2</i>	<i>SLOW RATE</i>
	<i>1500</i>		<i>68</i>	<i>1/4</i>	<i>CEMENT ON PERFS</i>
	<i>1500</i>		<i>68</i>		<i>3 661 CEMENT OUT</i>
	<i>1300</i>				<i>SHUT DOWN - WASH UP TRUCK</i>
<i>1525</i>	<i>1500</i>		<i>68</i>		<i>OPEN 4 1/2 PSE VALVE</i>
					<i>PSE UP</i>
					<i>HOLDING 1500 PSI</i>
					<i>SHUT IN 4 1/2 VALVE</i>
					<i>4 1/2 RUBBER PLUG AT 4375'</i>
<i>545</i>					<i>JOB COMPLETE</i>
					<i>Thanks Kevin</i>

1024 NE Highway 91, P.O. Box 8813, Pratt, KS 67124-8813 Phone (785) 672-1120 FAX (785) 672-3483

White - Accounting • Canary - Customer • Pink - Field Office



INVOICE NO.

FIELD ORDER

02622

Subject to Correction

Date: 9-28-00
Customer ID

Lease: ROBBERNS
County: COMANCHE

Well #: 1
State: KS.

Legal: 6-315-16W
Station: PRATT, KS

COIL PRODUCERS INC. OF KS.
H
A
R
G
E

Depth: Formallon: Shoe Joint:
Casing: 1/2 Casing Depth: 4921 TD: Job Type: PTA - OLD WELL
Customer Representative: BRAD SERRIN Treasurer: KEVIN CORNEY

AFE Number PO Number

Materials Received by: X [Signature]

Product Code	QUANTITY	MATERIAL, EQUIPMENT and SERVICES USED	UNIT PRICE	AMOUNT	ACCOUNTING	
					CORRECTION	AMOUNT
D101	50 SCS.	COMMON CEMENT				
G226	100 lbs.	BOTTOM SEED NUTS				
E130	1 EA.	1/2 RUBBER PLUG				
E107	50 SCS.	CEMENT SERVICE CHARGE				
E100	40 miles	UNITS MILES				
E104	94 TM	TONS MILES				
R400	1 each	EA. PTA PUMP CHARGE				
		DISCOUNTED PRICE		1162.50		
		PLUS TAX				

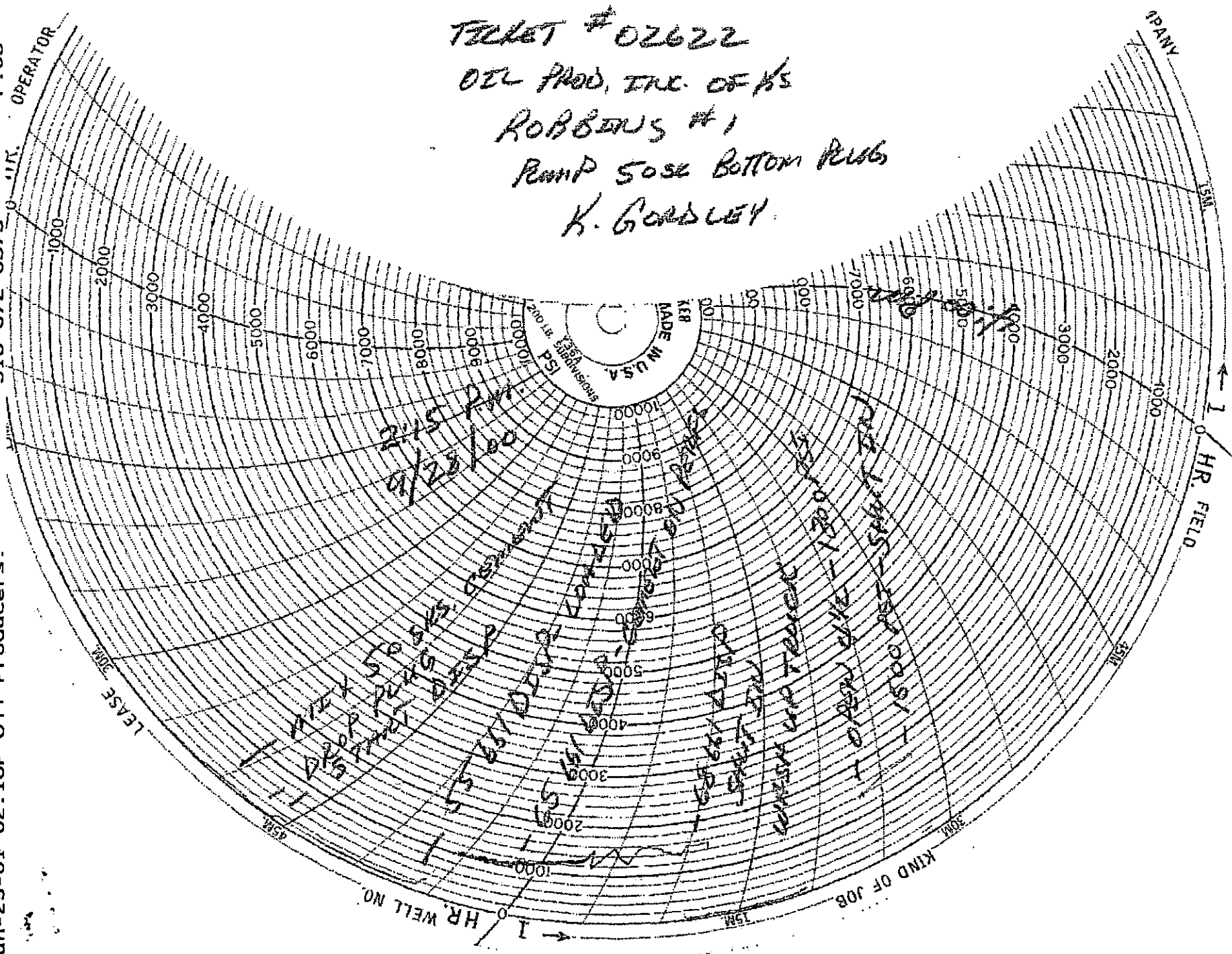
Jun-25-01 02:16P Oil Producers.

316 672 6373

P.03

OPERATOR

Ticket # 02622
OIL PROD. INC. OF KS
ROBBINS #1
PUMP 50SE BOTTOM PLUG
K. GORDLEY



LEASE 3000

1 HR. WELL NO.

KIND OF JOB

1 HR. FIELD

MADE IN U.S.A.
200 R. EBERHARDTSON

2/15 PM
02/23/00

OIL PROD. INC. OF KS
 ROBBINS #1
 PUMP 50SE BOTTOM PLUG
 K. GORDLEY