

Pending CO-7

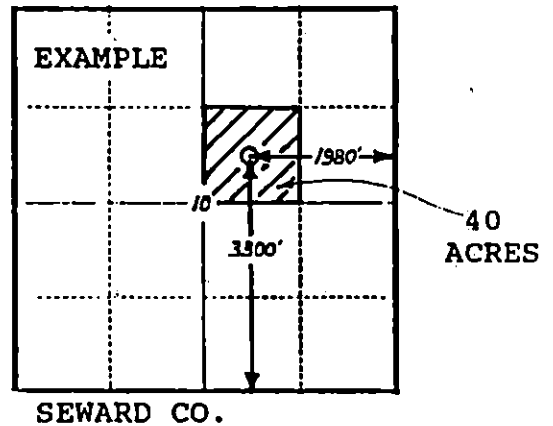
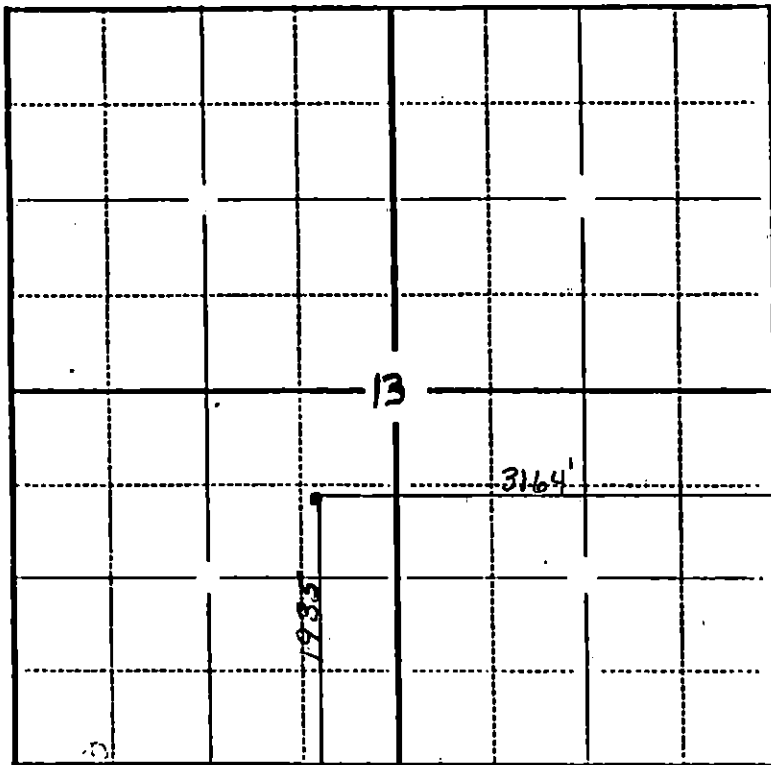
PLAT AND CERTIFICATION OF ACREAGE ATTRIBUTABLE TO AN OIL WELL

State Corporation Commission, Conservation Division
200 Colorado Derby Bldg. Wichita, Kansas 67202

OPERATOR MESA OPERATING LIMITED PARTNERSHIP
LEASE NAME MOORHEAD
WELL NUMBER # 2-13 ARZ 15-189-21518-0000
FIELD LAHEY
NUMBER OF ACRES ATTRIBUTED TO WELL 80

LOCATION OF WELL:
1935 feet north of SE corner
3164 feet west of SE corner
13 Sec. 31S T. 35W R.
COUNTY STEVENS

PLAT
(Show location of well and shade attributable acreage)
(Show footage to nearest lease or unit boundary line)



The undersigned hereby certifies that he is DEANA R. REA for MESA OPERATING LIMITED PARTNERSHIP (Co.), a duly authorized agent, that all information shown hereon is true and correct to the best of his knowledge and belief, and that all acreage claimed as attributable to the well named herein is held by production from that well.

Subscribed and sworn to before me on this 6th day of March, 1992

Deana R. Rea
Tammy Elliott
Notary Public

My Commission expires 5/24/93

RECEIVED
KANSAS CORPORATION COMMISSION

TAMMY ELLIOTT
Notary Public, State of Texas
My Commission Expires 5-24-93

(6-1989)

MAR 13 1992

CONSERVATION DIVISION
WICHITA, KS