

STATE OF KANSAS - CORPORATION COMMISSION
 PRODUCTION TEST & GOR REPORT

15-097-20841-00-00

Form C-5 Revised

Conservation Division
 TEST: Initial Annual Workover Reclassification TEST DATE: 4-17-82
 Company: Petroleum Inc Lease: Nichols Well No.: 0-1
 County: KIOWA Location: Nichols Section: 20 Township: 29S Range: 18W Acres:
 Field: Nichols Reservoir: K.C.-Lansing Pipeline Connection: Matador (Truck)
 Completion Date: Type Completion (Describe): Single Plug Back T.D.: 4700' Packer Set At:
 Production Method: Pumping Type Fluid Production: oil & water API Gravity of Liquid/Oil: 44.2
 Casing Size: 5 1/2" Weight: 14# I.D.: Set At: 4983' Perforations: 4562'-4563' To:
 Tubing Size: 2 3/8" Weight: 4.7 I.D.: Set At: Perforations: 4572' To:

Test: Starting Date 4-16-82 Time 9:30 A.M. Ending Date 4-17-82 Time 9:30 A.M. Duration Hrs.: 24
 Test: Starting Date 4-17-82 Time 9:30 A.M. Ending Date 4-18-82 Time 9:30 A.M. Duration Hrs.: 24

OIL PRODUCTION OBSERVED DATA

Producing Wellhead Pressure		Separator Pressure			Choke Size					
Reading:	<u>90</u>	Tubing:	<u>60</u>							
ls./In.	Tank	Starting Gauge			Ending Gauge			Net Prod. Bbls.		
	Size	Number	Feet	Inches	Barrels	Feet	Inches	Barrels	Water	Oil
Test:	<u>200</u>	<u>1324</u>	<u>2</u>	<u>4</u>	<u>46.76</u>	<u>7</u>	<u>11 1/4</u>	<u>159.06</u>	-	<u>112.3</u>
Test:	<u>200</u>	<u>1325</u>	<u>3</u>	<u>7</u>	<u>71.81</u>	<u>8</u>	<u>10</u>	<u>177.02</u>	-	<u>105.2</u>
Test:										

GAS PRODUCTION OBSERVED DATA

Orifice Meter Connections				Orifice Meter Range				
Line Taps:		Flange Taps:		Differential:		Static Pressure:		
Measuring Orifice	Run-Prover-Tester Size	Orifice Size	Meter-Prover-Tester In. Water	Pressure In. Merc.	Paig or (Pd)	Diff. Press. (hw) or (hd)	Gravity Gas (Gg)	Flowing Temp. (t)
Orifice Meter	<u>2"</u>	<u>.50"</u>			<u>21#</u>		<u>.70</u>	<u>60°</u>
Orifice Meter								
Orifice Meter								
Orifice Meter								

GAS FLOW RATE CALCULATIONS (R)

Flow Rate (R)	Meter-Prover Press. (Psia)	Extension $\sqrt{hw \times Pm}$	Gravity Factor (Fg)	Flowing Temp. Factor (Ft)	Deviation Factor (Fpv)	Chart Factor (Fd)
<u>183 MCF</u>						
Oil Prod. Bbls./Day:	<u>105</u>					
Gas/Oil Ratio (GOR) =	<u>1.7</u>					

The undersigned authority, on behalf of the Company, states that he is duly authorized to make the above report and that he has knowledge of the facts stated therein, and that said report is true and correct. Executed this the 18 day of 4 1982

For Offset Operator: _____ For State: _____ For Company: _____

RECEIVED
 STATE CORPORATION COMMISSION
 MAR 29 1984
 3-29-84
 CONSERVATION DIVISION
 Wichita, Kansas

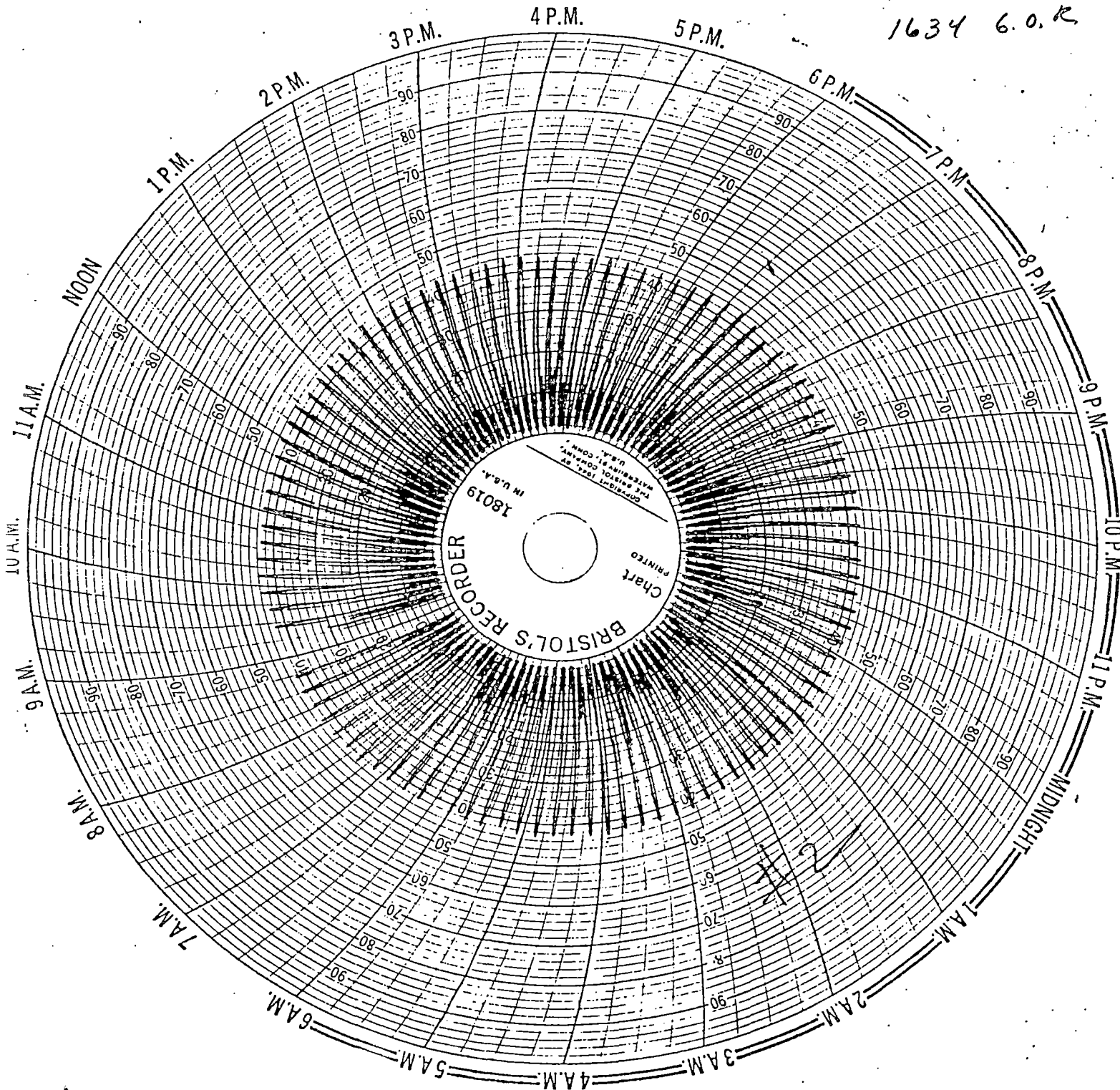
112 BBI oil
no water

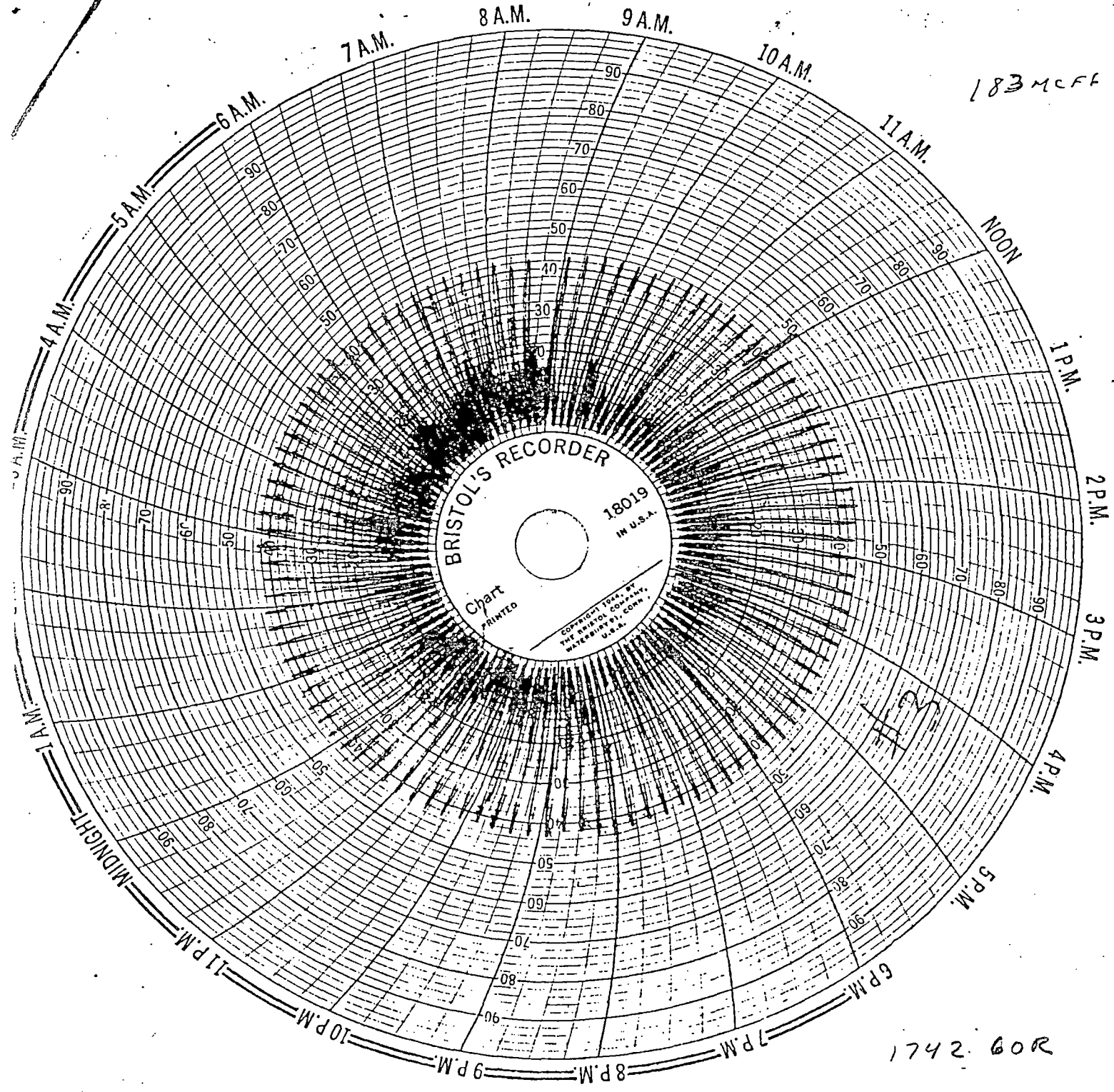
1/2" plate

4-16-82 thru 4-17-82
9:30 A.M. 9:30 A.M.

183 MCF6

1634 6.0.R





1/2" plate

105 BBI oil
no water

4-17-52 thru 4-18-52
9:00 A.M. 8:45 A.M.