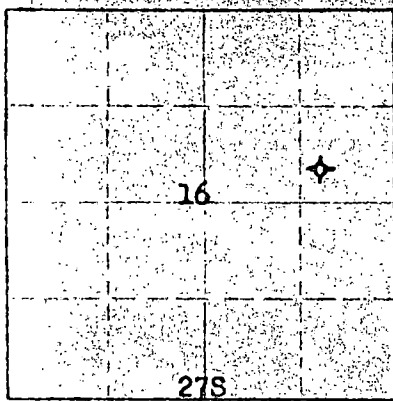


STATE OF KANSAS
STATE CORPORATION COMMISSION

Give All Information Completely
Make Required Affidavit
Mail or Deliver Report for
Conservation Division
State Corporation Commission
800 Hitting Building
Wichita, Kansas

WELL PLUGGING RECORD



Locate well correctly on above
Section Plot

Kingman County, Sec. 16 Twp. 27S R. 7 (X) (W)

Location as "NE, CNW, SW" or footage from lines SW/4 SE/4 NE/4
Lease Owner Heathman-Seeligson Drilling Co.
Lease Name WOOLDRIDGE "A" Well No. 1
Office Address 1015 East Second, Wichita 7, Kansas
Character of Well (completed as Oil, Gas or Dry Hole) dry hole
Date well completed Nov. 21 1954
Application for plugging filed April 21 1955
Application for plugging approved 19
Plugging commenced May April 2 1955
Plugging completed May April 4 1955
Reason for abandonment of well or producing formation ---

If a producing well is abandoned, date of last production --- 19---
Was permission obtained from the Conservation Division or its agents before plugging was commenced? yes

Name of Conservation Agent who supervised plugging of this well M. A. Rives, Box 8, Pratt, Kansas
Producing formation Mississippian Depth to top 3824 Bottom 4012 Total Depth of Well 4303 Feet
Show depth and thickness of all water, oil and gas formations.

OIL, GAS OR WATER RECORDS

CASING RECORD

FORMATION	CONTENT	FROM	TO	SIZE	PUT IN	PULLED OUT
Chase Group	small amt. gas	1280	1360	8-5/8"	surf. csg. @ 182'	none
Douglas Sand	salt water	3025	3065	w/125 sacks cement.		
Lansing-Kansas City	gas and water	3441	3463	5-1/2" oil string		2941'
Mississippian	oil, gas & wtr.	3824	3874	@ 3904 1/2'		
Viola	salt water	4157	4163	w/175 sacks cement		

Describe in detail the manner in which the well was plugged, indicating where the mud fluid was placed and the method or methods used in introducing it into the hole. If cement or other plugs were used, state the character of same and depth placed, from _____ feet to _____ feet for each plug set.

(Operator set plug at 3793' w/35 sacks cement w/packer 200' off bottom)
Checked cement and found top at 3513'. Pumped in 20 sacks of Aquagel mud. Bailed mud to 182', set a rock bridge to 175' and ran 20 sacks of cement. Mudded the hole to 35' and ran 10 sacks of cement on top. Plugging completed

(If additional description is necessary, use BACK of this sheet)

Name of Plugging Contractor West Supply Co.
Address Chase, Kansas

STATE OF Kansas COUNTY OF Rice
Noel Knight Plugging Contractor

(employee of ~~West Supply Co.~~) of the above-described well, being first duly sworn on oath, says: That I have knowledge of the facts, statements, and matters herein contained and the log of the above-described well as filed and that the same are true and correct. So help me God. WEST SUPPLY CO.

(Signature) By: Noel Knight
Chase, Kansas (Address)

SUBSCRIBED AND SWORN to before me this 19th day of April May 1955
My commission expires May 20, 1957
Edward E. Ober
Notary Public
Conservation Division
Wichita, Kansas

