

SIDE TWO

Operator Name WALDOCK DEVELOPMENT CO.

Lease Name DAVIS "B" Well # 1

Sec. 31 Twp. 27 Rge. 4
 East
 West

County Sedgwick

INSTRUCTIONS: Show important tops and base of formations penetrated. Detail all cores. Report all drill stem tests giving interval tested, time tool open and closed, flowing and shut-in pressures, whether shut-in pressure reached static level, hydrostatic pressures, bottom hole temperature, fluid recovery, and flow rates if gas to surface during test. Attach extra sheet if more space is needed. Attach copy of log.

Drill Stem Tests Taken Yes No
 (Attach Additional Sheets.)

Samples Sent to Geological Survey Yes No

Cores Taken Yes No

Electric Log Run Yes No
 (Submit Copy.)

List All E.Logs Run:

Name	Formation (Top), Depth and Datum		Datum
	Top		
Lansing	2889	(-1473)	
Kansas City	3114	(-1698)	
BKC	3340	(-1924)	
Mississippi	3725	(-2309)	
Kinderhook	3985	(-2569)	
Misener	4089	(-2673)	
Viola	4112	(-2696)	
Simpson	4129	(-2713)	
Total	4134	(-2713)	

CASING RECORD <input type="checkbox"/> New <input type="checkbox"/> Used							
Report all strings set-conductor, surface, intermediate, production, etc.							
Purpose of String	Size Hole Drilled	Size Casing Set (In O.D.)	Weight Lbs./Ft.	Setting Depth	Type of Cement	# Sacks Used	Type and Percent Additives
surface	12-1/4"	8-5/8"	20#	263'	60/40poz	115	3%cc 2%gel

ADDITIONAL CEMENTING/SQUEEZE RECORD					
Purpose:	Depth Top Bottom	Type of Cement	#Sacks Used	Type and Percent Additives	
<input type="checkbox"/> Perforate					
<input type="checkbox"/> Protect Casing					
<input type="checkbox"/> Plug Back TD					
<input type="checkbox"/> Plug Off Zone					

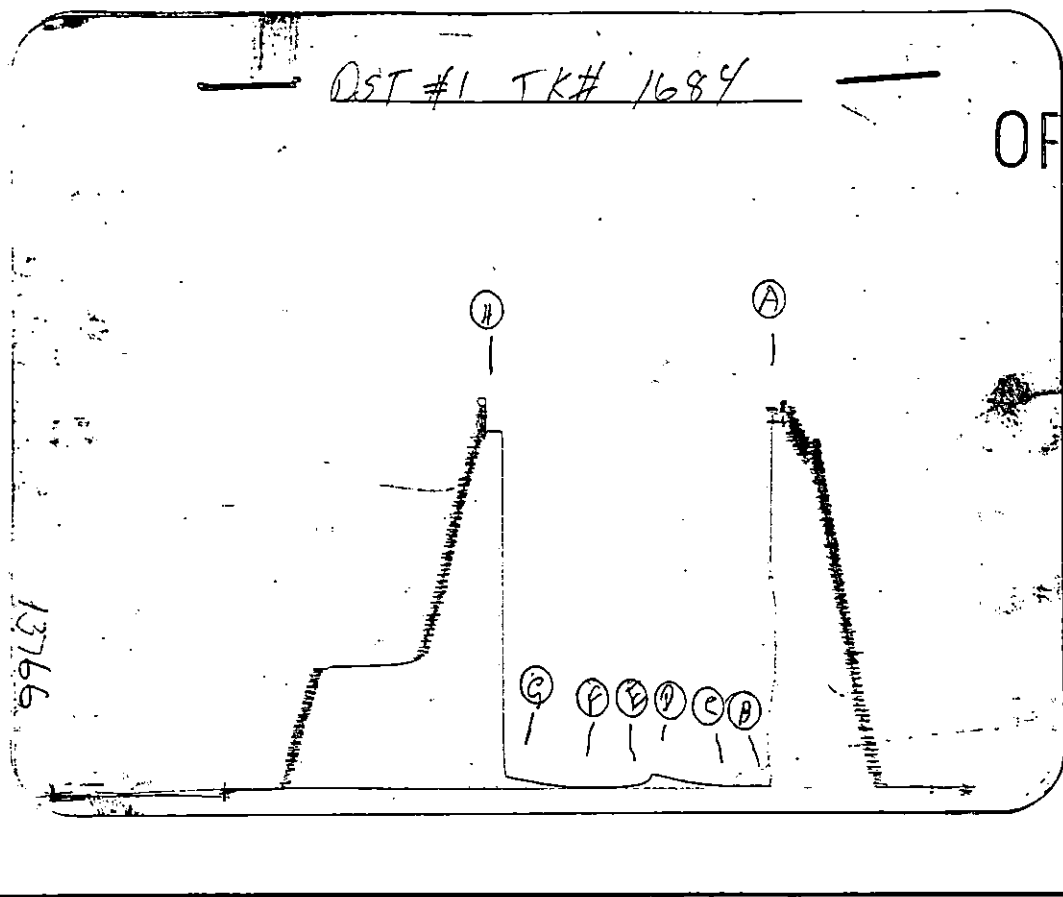
Shots Per Foot	PERFORATION RECORD - Bridge Plugs Set/Type Specify Footage of Each Interval Perforated		Acid, Fracture, Shot, Cement Squeeze Record (Amount and Kind of Material Used)		Depth

TUBING RECORD		Size	Set At	Packer At	Liner Run <input type="checkbox"/> Yes <input type="checkbox"/> No
Date of First, Resumed Production, (SMD or In.)	Producing Method	<input type="checkbox"/> Flowing	<input type="checkbox"/> Pumping	<input type="checkbox"/> Gas Lift	<input type="checkbox"/> Other (Explain)
Estimated Production Per 24 Hours <u>DRY</u>	Oil Bbls.	Gas Mcf	Water Bbls.	Gas-Oil Ratio	Gravity

Disposition of Gas: Vented Sold Used on Lease (If vented, submit ACO-18.)

METHOD OF COMPLETION: Open Hole Perf. Dually Comp. Commingled

Production Interval: _____



ORIGINAL

This is an actual photograph of recorder chart.

POINT	PRESSURE		
	Field Reading	Office Reading	
(A) Initial Hydrostatic Mud	1987	1994	PSI
(B) First Initial Flow Pressure	10	10	PSI
(C) First Final Flow Pressure	10	10	PSI
(D) Initial Closed-in Pressure	70	84	PSI
(E) Second Initial Flow Pressure	10	10	PSI
(F) Second Final Flow Pressure	10	10	PSI
(G) Final Closed-in Pressure	70	72	PSI
(H) Final Hydrostatic Mud	1976	1985	PSI



Ricketts Testing

ORIGINAL

Company DOCKING DEVELOPMENT CO. Lease & Well No. DAVIS "B"

Formation MISENER SAND Effective Pay _____ ft. Ticket No. 1684

11-26-92 Sec. 31 Twp. 27 Range 4W County SEDGWICK State KANSAS

Approved by LARRY BARTELSON Ricketts Representative DAN DELANEY

Information Test No. 1 Interval Tested from 4084 ft. to 4100 ft. Total Depth 4100 ft.

Packer Depth 4084 ft. Size 6 3/4 in. Packer Depth _____ ft. Size _____ in.

Packer Depth 4081 ft. Size 6 3/4 in. Packer Depth _____ ft. Size _____ in.

Depth of Selective Zone Set _____

Recorder Depth (Inside) 4089 ft. Recorder Number 13766 Cap. 4275

Bottom Recorder Depth (Outside) 4092 ft. Recorder Number 13765 Cap. 4150

Down Straddle Recorder Depth _____ ft. Recorder Number _____ Cap. _____

Drilling Contractor Allen Drilling Rig #1 Drill Collar Length _____ I.D. _____ in.

Mud Type Chemical Viscosity 41 Weight Pipe Length _____ I.D. _____ in.

Weight 9.5 Water Loss 11.6 cc. Drill Pipe Length 4062 I.D. 3.25 in.

Surf. Pressure 4,800 P.P.M. Test Tool Length 22 ft. Tool Size 5 1/2 in.

Anchor Length 16 ft. Size 5 1/2 in.

Well Flow? No Reversed Out No Surface Choke Size 3/4 in. Bottom Choke Size 3/4 in.

Main Hole Size 7 7/8 in. Tool Joint Size 4 1/2 x h in.

Remarks: Very weak blow Initial Flow Period. 1/8"

Weak blow throughout Final Flow Period. 1 1/2"

Interval 10 ft. of Oil cut mud. 11% Oil 89% Mud

Interval _____ ft. of _____

Interval _____ ft. of _____

Interval _____ ft. of _____

Interval _____ ft. of _____

Interval _____ ft. of _____

Remarks: A show of free oil in tool.

Set Packer (s) <u>1:45</u> AMM P.M.	Time Started Off Bottom <u>5:00</u> AMM P.M.	Maximum Temperature <u>113°</u>
Initial Hydrostatic Pressure.....(A)	<u>1994</u>	P.S.I.
Initial Flow Period.....Minutes <u>30</u>	(B) <u>10</u>	P.S.I. to
	(C) <u>10</u>	P.S.I.
Initial Closed In Period.....Minutes <u>60</u>	(D) <u>84</u>	P.S.I.
Initial Flow Period.....Minutes <u>45</u>	(E) <u>10</u>	P.S.I. to
	(F) <u>10</u>	P.S.I.
Initial Closed In Period.....Minutes <u>60</u>	(G) <u>72</u>	P.S.I.
Initial Hydrostatic Pressure.....(H)	<u>1985</u>	P.S.I.

RICKETTS TESTING
Pressure Data

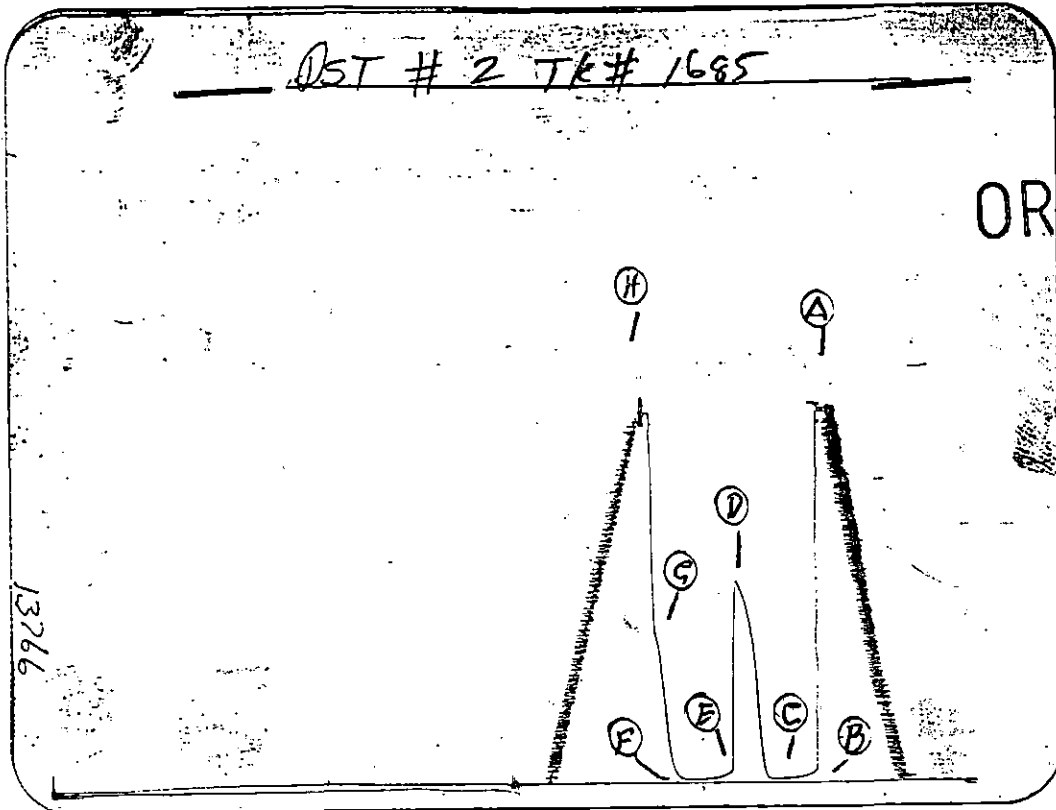
ORIGINAL

Date 11-26-92 Test Ticket No. 1684
 Recorder No. 13766 Capacity 4275 Location 4089 Ft.
 Clock No. _____ Elevation _____ Well Temperature 113 °F

Point	Pressure		Time Given	Time Computed
A Initial Hydrostatic Mud	1994 P.S.I.	Open Tool	1:45 P M	
B First Initial Flow Pressure	10 P.S.I.	First Flow Pressure	30 Mins	30 Mins.
C First Final Flow Pressure	10 P.S.I.	Initial Closed-in Pressure	60 Mins	60 Mins.
D Initial Closed-in Pressure	84 P.S.I.	Second Flow Pressure	45 Mins	45 Mins.
E Second Initial Flow Pressure	10 P.S.I.	Final Closed-in Pressure	60 Mins	60 Mins.
F Second Final Flow Pressure	10 P.S.I.			
G Final Closed-in Pressure	72 P.S.I.			
H Final Hydrostatic Mud	1985 P.S.I.			

PRESSURE BREAKDOWN

Point Mins.	First Flow Pressure		Initial Shut-In		Second Flow Pressure		Final Shut-In	
	Breakdown:	Inc.	Breakdown:	Inc.	Breakdown:	Inc.	Breakdown:	Inc.
	of	mins. and a	of	mins. and a	of	mins. and a	of	mins. and a
	final inc. of	Min.	final inc. of	Min.	final inc. of	Min.	final inc. of	Min.
	Point Minutes	Press.	Point Minutes	Press.	Point Minutes	Press.	Point Minutes	Press.
P 1	0	10	0	10	0	10	0	10
P 2	5	10	3	10	5	10	3	10
P 3	10	10	6	10	10	10	6	10
P 4	15	10	9	10	15	10	9	13
P 5	20	10	12	12	20	10	12	16
P 6	25	10	15	14	25	10	15	19
P 7	30	10	18	18	30	10	18	21
P 8	35		21	21	35	10	21	24
P 9	40		24	24	40	10	24	27
P 10	45		27	28	45	10	27	30
P 11	50		30	34	50		30	33
P 12	55		33	38	55		33	36
P 13	60		36	42	60		36	39
P 14	65		39	46	65		39	42
P 15	70		42	52	70		42	45
P 16	75		45	57	75		45	48
P 17	80		48	61	80		48	52
P 18	85		51	74	85		51	58
P 19	90		54	78	90		54	62
P 20	95		57	80	95		57	67
			60	84			60	72



This is an actual photograph of recorder chart.

POINT	PRESSURE		
	Field Reading	Office Reading	
(A) Initial Hydrostatic Mud	2084	2093	PSI
(B) First Initial Flow Pressure	21	19	PSI
(C) First Final Flow Pressure	21	19	PSI
(D) Initial Closed-in Pressure	1135	1137	PSI
(E) Second Initial Flow Pressure	21	21	PSI
(F) Second Final Flow Pressure	21	21	PSI
(G) Final Closed-in Pressure	848	853	PSI
(H) Final Hydrostatic Mud	2073	2075	PSI

Pressure Data

ORIGINAL

Date 11-27-92 Recorder No. 13766 Capacity 4275 Test Ticket No. 1685 Location 4123 Ft.
 Clock No. Elevation Well Temperature 118 °F

Point	Pressure	Time Given	Time Computed
A Initial Hydrostatic Mud	2093 P.S.I.	11:30 A	M
B First Initial Flow Pressure	19 P.S.I.	30 Mins	30 Mins.
C First Final Flow Pressure	19 P.S.I.	30 Mins	27 Mins.
D Initial Closed-in Pressure	1137 P.S.I.	30 Mins	30 Mins.
E Second Initial Flow Pressure	21 P.S.I.	30 Mins	27 Mins.
F Second Final Flow Pressure	21 P.S.I.		
G Final Closed-in Pressure	853 P.S.I.		
H Final Hydrostatic Mud	2075 P.S.I.		

PRESSURE BREAKDOWN

First Flow Pressure Breakdown: <u>6</u> Inc. of <u>5</u> mins. and a final inc. of <u> </u> Min.		Initial Shut-In Breakdown: <u>9</u> Inc. of <u>3</u> mins. and a final inc. of <u> </u> Min.		Second Flow Pressure Breakdown: <u>6</u> Inc. of <u>5</u> mins. and a final inc. of <u> </u> Min.		Final Shut-In Breakdown: <u>9</u> Inc. of <u>3</u> mins. and a final inc. of <u> </u> Min.		
Point Mins.	Press.	Point Minutes	Press.	Point Minutes	Press.	Point Minutes	Press.	
P 1	0	19	0	19	0	21	0	21
P 2	5	19	3	28	5	21	3	27
P 3	10	19	6	54	10	21	6	33
P 4	15	19	9	205	15	21	9	44
P 5	20	19	12	497	20	21	12	76
P 6	25	19	15	770	25	21	15	188
P 7	30	19	18	923	30	21	18	378
P 8	35		21	1021	35		21	612
P 9	40		24	1093	40		24	797
P10	45		27	1137	45		27	853
P11	50		30		50		30	
P12	55		33		55		33	
P13	60		36		60		36	
P14	65		39		65		39	
P15	70		42		70		42	
P16	75		45		75		45	
P17	80		48		80		48	
P18	85		51		85		51	
P19	90		54		90		54	
P20	95		57		95		57	
			60				60	



Ricketts Testing

ORIGINAL

Company DOCKING DEVELOPMENT CO. Lease & Well No. DAVIS "B"

Formation SIMPSON SAND Effective Pay _____ ft. Ticket No. 1685

Date 11-27-92 Sec. 31 Twp. 27 Range 4W County SEDGWICK State KANSAS

Approved by LARRY BARTELSON Ricketts Representative DAN DELANEY

Information Test No. 2 Interval Tested from 4118 ft. to 4134 ft. Total Depth 4134 ft.

Packer Depth 4118 ft. Size 6 3/4 in. Packer Depth _____ ft. Size _____ in.

Packer Depth 4115 ft. Size 6 3/4 in. Packer Depth _____ ft. Size _____ in.

Depth of Selective Zone Set _____

Recorder Depth (Inside) 4123 ft. Recorder Number 13766 Cap. 4275

Bottom Recorder Depth (Outside) 4126 ft. Recorder Number 13765 Cap. 4150

Down Straddle Recorder Depth _____ ft. Recorder Number _____ Cap. _____

Drilling Contractor Allen Drilling Rig #1 Drill Collar Length _____ I.D. _____ in.

Mud Type Chemical Viscosity 41 Weight Pipe Length _____ I.D. _____ in.

Weight 9.5 Water Loss 11.8 cc. Drill Pipe Length 4096 I.D. 3.25 in.

Gravimetric Solids 4,500 P.P.M. Test Tool Length 22 ft. Tool Size 5 1/2 in.

Tool Make _____ Serial Number _____ Anchor Length 16 ft. Size 5 1/2 in.

Well Flow? No Reversed Out No Surface Choke Size 3/4 in. Bottom Choke Size 3/4 in.

Main Hole Size 7 7/8 in. Tool Joint Size 4 1/2 x h in.

Remarks: Weak blow increasing slowly Initial Flow Period. 1/8" to 1"
Weak blow decreasing Final Flow Period. 1" to 1 1/2"

Interval covered 1 ft. of Oil cut mud

Interval covered 9 ft. of Slightly oil specked mud.

Interval covered _____ ft. of _____

Interval covered _____ ft. of _____

Interval covered _____ ft. of _____

Remarks: _____

Set Packer (s)	<u>11:30</u>	<u>A.M.</u>	Time Started Off Bottom	<u>1:30</u>	<u>P.M.</u>	Maximum Temperature	<u>118°</u>
Initial Hydrostatic Pressure			(A)	<u>2093</u>			P.S.I.
Initial Flow Period	Minutes	<u>30</u>	(B)	<u>19</u>			P.S.I. to
			(C)	<u>19</u>			P.S.I.
Initial Closed In Period	Minutes	<u>27</u>	(D)	<u>1137</u>			P.S.I.
Initial Flow Period	Minutes	<u>30</u>	(E)	<u>21</u>			P.S.I. to
			(F)	<u>21</u>			P.S.I.
Initial Closed In Period	Minutes	<u>27</u>	(G)	<u>853</u>			P.S.I.
Initial Hydrostatic Pressure			(H)	<u>2075</u>			P.S.I.

DISTRICT Paaw, Ks DATE 11-27-92

TO: **HALLIBURTON SERVICES** YOU ARE HEREBY REQUESTED TO FURNISH EQUIPMENT AND SERVICEMEN TO DELIVER AND OPERATE

THE SAME AS AN INDEPENDENT CONTRACTOR TO: Dockzng Development (CUSTOMER)
AND DELIVER AND SELL PRODUCTS, SUPPLIES, AND MATERIALS FOR THE PURPOSE OF SERVICING.

WELL NO. #1 LEASE Davis #3 SEC. 31 TWP. 27 RANGE 4W

FIELD _____ COUNTY Seaboard STATE Ks OWNED BY _____

THE FOLLOWING INFORMATION WAS FURNISHED BY THE CUSTOMER OR HIS AGENT

FORMATION NAME _____ TYPE _____	NEW USED	WEIGHT	SIZE	FROM	TO	MAX. ALLOW. P.S.I.
FORMATION THICKNESS _____ FROM _____ TO _____						
PACKER: TYPE _____ SET AT _____						
TOTAL DEPTH <u>4134</u> MUD WEIGHT _____						
BORE HOLE <u>7 7/8</u>						
INITIAL PROD: OIL _____ BPD, H ₂ O _____ BPD, GAS _____ MCF _____						
PRESENT PROD: OIL _____ BPD, H ₂ O _____ BPD, GAS _____ MCF _____						

PREVIOUS TREATMENT: DATE _____ TYPE _____ MATERIALS _____

TREATMENT INSTRUCTIONS: TREAT THRU TUBING ANNULUS CASING TUBING/ANNULUS HYDRAULIC HORSEPOWER ORDERED _____

Plug to Abandon^{DP} with 115 sks of 40-60 for containing 6% Total Gel. Procedure: 35 sks @ 750', 35 sks @ 315', 35 sks from 60' to surface, 10 sks in annulus of leave 10 sks for water well.

CUSTOMER OR HIS AGENT WARRANTS THE WELL IS IN PROPER CONDITION TO RECEIVE THE PRODUCTS, SUPPLIES, MATERIALS, AND SERVICES

As consideration, the above-named Customer agrees: **THIS CONTRACT MUST BE SIGNED BEFORE WORK IS COMMENCED**

- a) To pay Halliburton in accord with the rates and terms stated in Halliburton's current price list. Invoices are payable NET by the 20th of the following month after date of invoice. Upon Customer's default in payment of Customer's account by the last day of the month following the month in which the invoice is dated, Customer agrees to pay interest thereon after default at the highest lawful contract rate applicable, but never to exceed 18% per annum. In the event it becomes necessary to employ attorneys to enforce collection of said account, Customer agrees to pay all collection costs and attorney fees in the amount of 20% of the amount of the unpaid account.
 - b) To defend, indemnify, release and hold harmless Halliburton, its divisions, subsidiaries, parent and affiliated companies and the officers, directors, employees, agents and servants of all of them from and against any claims, liability, expenses, attorneys fees, and costs of defense to the extent permitted by law for:
 1. Damage to property owned by, in the possession of, or leased by Customer, and/or the well owner (if different from Customer), including, but not limited to, surface and subsurface damage. The term "well owner" shall include working and royalty interest owners.
 2. Reservoir, formation, or well loss or damage, subsurface trespass or any action in the nature thereof.
 3. Personal injury or death or property damage (including, but not limited to, damage to the reservoir, formation or well), or any damages whatsoever, growing out of or in any way connected with or resulting from pollution, subsurface pressure, losing control of the well and/or a well blowout or the use of radioactive material.
- The defense, indemnity, release and hold harmless obligations of Customer provided for in this Section b) and Section c) below shall apply to claims or liability even if caused or contributed to by Halliburton's negligence, strict liability, or the unseaworthiness of any vessel owned, operated, or furnished by Halliburton or any defect in the data, products, supplies, materials, or equipment of Halliburton whether in the preparation, design, manufacture, distribution, or marketing thereof, or from a failure to warn any person of such defect. Such defense, indemnity, release and hold harmless obligations of Customer shall not apply where the claims or liability are caused by the gross negligence or willful misconduct of Halliburton. The term "Halliburton" as used in said Sections b) and c) shall mean Halliburton, its divisions, subsidiaries, parent and affiliated companies, and the officers, directors, employees, agents and servants of all of them.
- c) That because of the uncertainty of variable well conditions and the necessity of relying on facts and supporting services furnished by others, Halliburton is unable to guarantee the effectiveness of the products, supplies or materials, nor the results of any treatment or service, nor the accuracy of any chart interpretation, research analysis, job recommendation or other data furnished by Halliburton. Halliburton personnel will use their best efforts in gathering such information and their best judgment in interpreting it, but Customer agrees that Halliburton shall not be liable for and Customer shall indemnify Halliburton against any damages arising from the use of such information.
 - d) That Halliburton warrants only title to the products, supplies and materials and that the same are free from defects in workmanship and materials. THERE ARE NO WARRANTIES, EXPRESS OR IMPLIED, OF MERCHANTABILITY, FITNESS OR OTHERWISE WHICH EXTEND BEYOND THOSE STATED IN THE IMMEDIATELY PRECEDING SENTENCE. Halliburton's liability and Customer's exclusive remedy in any cause of action (whether in contract, tort, breach of warranty or otherwise) arising out of the sale or use of any products, supplies or materials is expressly limited to the replacement of such products, supplies or materials on their return to Halliburton or, at Halliburton's option, to the allowance to the Customer of credit for the cost of such items. In no event shall Halliburton be liable for special, incidental, indirect, punitive or consequential damages.
 - e) That Customer shall, at its risk and expense, attempt to recover any Halliburton equipment, tools or instruments which are lost in the well and if such equipment, tools or instruments are not recovered, Customer shall pay Halliburton its replacement cost unless such loss is due to the sole negligence of Halliburton. If Halliburton equipment, tools or instruments are damaged in the well, Customer shall pay Halliburton the lesser of its replacement cost or the cost of repairs unless such damage is caused by the sole negligence of Halliburton. In the case of equipment, tools or instruments for marine operations, Customer shall, in addition to the foregoing, be fully responsible for loss of or damage to any of Halliburton's equipment, tools or instruments which occurs at any time after delivery to Customer at the landing until returned to the landing, unless such loss or damage is caused by the sole negligence of Halliburton.
 - f) To waive the provisions of the Deceptive Trade Practices - Consumer Protection Act, to the extent permitted by law.
 - g) That this contract shall be governed by the law of the state where services are performed or materials are furnished.
 - h) That Halliburton shall not be bound by any changes or modifications in this contract, except where such change or modification is made in writing by a duly authorized executive officer of Halliburton.

I HAVE READ AND UNDERSTAND THIS CONTRACT AND REPRESENT THAT I AM AUTHORIZED TO SIGN THE SAME AS CUSTOMER'S AGENT IN COMPLIANCE WITH THE PROVISIONS OF THE CONSUMER PROTECTION COMMISSION

SIGNED Richard Stevenson CUSTOMER
DATE Nov 29, 1992
TIME _____ A.M./P.M.

RECEIVED
APR 14 1993

CONSERVATION DIVISION
Wichita, Kansas

JOB LOG

WELL NO. #1 LEASE Dauv's 'B' TICKET NO. 295262

CUSTOMER Drexel's Devel. PAGE NO. _____

JOB TYPE Pumps to Abandon DATE 11-27-92

FORM 2013.R-2

CHART NO.	TIME	RATE (BPM)	VOLUME (BBL) (GAL)	PUMPS		PRESSURE (PSI)		DESCRIPTION OF OPERATION AND MATERIALS
				T	C	TUBING	CASING	
	1600							CAUSED OUT - HEAD @ 1830 ON LOC - PEG LAYING DOWN DP - SET UP
	1830							
								1 ST PUMP - 35 SKS @ 750' RUN WATER AHEAD MIX CEMENT RUN WATER BEHIND - LAY DOWN DP
	2217	4.5	25	✓	✓	300		
	2223	4.5	10.3	✓	✓	250		
	2226	4.5	8	✓	✓	200		
								2 ND PUMP - 35 SKS @ 315' RUN WATER AHEAD MIX CEMENT RUN WATER BEHIND - LAY DOWN DP
	2253	5.0	5	✓	✓	200		
	2255	5.0	10.3	✓	✓	250		
	2257	5.0	1.5	✓	✓	250		
	2313		7.3	✓	✓	200		CIRCULATE CMT @ 60' w/ 25 SKS
	2323		2.9	✓	✓	75		PUMP RATHER W/ 10 SKS - LEAVE 10 SKS FOR RATHER
	2330							Well PULSED - WASH UP
	0015							JOB COMPLETE

ORIGINAL

THANKS
- RALPH

RECEIVED
STATE CORPORATION COMMISSION

APR 14 1993

CONSERVATION DIVISION
Wichita, Kansas

CUSTOMER



JOB SUMMARY

HALLIBURTON DIVISION

EASTERN AREA

HALLIBURTON LOCATION

Kans - Ks

BILLED ON TICKET NO.

295262

WELL DATA

FIELD _____ SEC. _____ TWP. _____ RNG. _____ COUNTY SENECA STATE Ks

FORMATION NAME _____ TYPE _____

FORMATION THICKNESS _____ FROM _____ TO _____

INITIAL PROD: OIL _____ BPD. WATER _____ BPD. GAS _____ MCFD

PRESENT PROD: OIL _____ BPD. WATER _____ BPD. GAS _____ MCFD

COMPLETION DATE _____ MUD TYPE _____ MUD WT. _____

PACKER TYPE _____ SET AT _____

BOTTOM HOLE TEMP. _____ PRESSURE _____

MISC. DATA _____ TOTAL DEPTH 4134

	NEW USED	WEIGHT	SIZE	FROM	TO	MAXIMUM PSI ALLOWABLE
CASING			9 1/4	24	750'	
LINER						
TUBING			1 3/4	250'	4134'	SHOTS/FT.
OPEN HOLE						
PERFORATIONS						
PERFORATIONS						
PERFORATIONS						

ORIGINAL

JOB DATA

TOOLS AND ACCESSORIES

TYPE AND SIZE	QTY.	MAKE
FLOAT COLLAR		
FLOAT SHOE		
GUIDE SHOE		
CENTRALIZERS		
BOTTOM PLUG		
TOP PLUG		
HEAD		
PACKER		
OTHER		

CALLLED OUT	ON LOCATION	JOB STARTED	JOB COMPLETED
DATE <u>11-27</u>	DATE <u>11-29</u>	DATE <u>11-29</u>	DATE <u>11-29</u>
TIME <u>11:00</u>	TIME <u>13:30</u>	TIME <u>7:17</u>	TIME <u>2:15</u>

PERSONNEL AND SERVICE UNITS

NAME	UNIT NO. & TYPE	LOCATION
<u>D. Keith</u>	<u>B-133</u>	<u>5224</u>
<u>D. Berger</u>	<u>C-160</u>	<u>502-304</u>
<u>K. Pender</u>	<u>21513</u>	<u>2nd</u>

MATERIALS

TREAT. FLUID _____ DENSITY _____ LB/GAL-API

DISPL. FLUID _____ DENSITY _____ LB/GAL-API

PROP. TYPE _____ SIZE _____ LB.

PROP. TYPE _____ SIZE _____ LB.

ACID TYPE _____ GAL _____ %

ACID TYPE _____ GAL _____ %

ACID TYPE _____ GAL _____ %

SURFACTANT TYPE _____ GAL _____ IN

NE AGENT TYPE _____ GAL _____ IN

FLUID LOSS ADD. TYPE _____ GAL-LB _____ IN

GELLING AGENT TYPE _____ GAL-LB _____ IN

FRIC. RED. AGENT TYPE _____ GAL-LB _____ IN

BREAKER TYPE _____ GAL-LB _____ IN

BLOCKING AGENT TYPE _____ GAL-LB _____

PERFPAC BALLS TYPE _____ QTY. _____

OTHER _____

OTHER _____

DEPARTMENT Cement

DESCRIPTION OF JOB WELL TO HOLE

JOB DONE THRU: TUBING CASING ANNULUS TBG/ANN.

CUSTOMER REPRESENTATIVE X

HALLIBURTON OPERATOR Jimmy King COPIES REQUESTED _____

CEMENT DATA

STAGE	NUMBER OF SACKS	CEMENT	BRAND	BULK SACKED	ADDITIVES	YIELD CU.FT./SK.	MIXED LBS./GAL.
	<u>115</u>	<u>4/100 2.7</u>	<u>Union</u>	<u>3.0</u>	<u>6% Tack Gel</u>	<u>1.65</u>	<u>131</u>

PRESSURES IN PSI

SUMMARY

VOLUMES

CIRCULATING _____ DISPLACEMENT _____

BREAKDOWN _____ MAXIMUM _____

AVERAGE _____ FRACTURE GRADIENT _____

SHUT-IN: INSTANT _____ 5-MIN. _____ 15-MIN. _____

ORDERED _____ AVAILABLE _____ USED _____

TREATING _____ DISPL. _____ OVERALL _____

FEET _____ REASON _____

PRESLUSH: BBL-GAL _____ TYPE _____

LOAD & BKDN: BBL-GAL _____ PAD: BBL-GAL _____

TREATMENT: BBL-GAL _____ DISPL: BBL-GAL _____

CEMENT SLURRY: BBL-GAL _____

TOTAL VOLUME: BBL-GAL _____

REMARKS See Job Log

RECEIVED
STATE CORPORATION COMMISSION
APR 14 1993

CUSTOMER: _____
JOB TYPE: _____
WELL NO: _____
DATE: _____

FORM 1906 R-11

WELL NO.—FARM OR LEASE NAME #1 DAVES "R"		COUNTY SEDBECK	STATE KS	CITY / OFFSHORE LOCATION	DATE 11-27-92
CHARGE TO DOCKING DEVELOPMENT		OWNER SAME		TICKET TYPE (CHECK ONE) SERVICE <input checked="" type="checkbox"/> SALES <input type="checkbox"/> YES <input type="checkbox"/> NO <input checked="" type="checkbox"/>	
ADDRESS		CONTRACTOR ALLEN DELG		LOCATION 1 PRATT, KS 2555	
CITY, STATE, ZIP		SHIPPED VIA 52504 <input type="checkbox"/> PPD <input type="checkbox"/> COLLECT		LOCATION 2	
WELL TYPE 01		WELL CATEGORY 062		WELL PERMIT NO.	
TYPE AND PURPOSE OF JOB 115 - Pipe to Abandon		WELL PERMIT NO. B-573006		DELIVERED TO LUCHTELN	
		ORDER NO.		REFERRAL LOCATION	
				LOCATION 3	
				CODE	

As consideration, the above-named Customer agrees to pay Halliburton in accord with the rates and terms stated in Halliburton's current price lists. Invoices payable NET by the 20th of the following month after date of invoice. Upon Customer's default in payment of Customer's account by the last day of the month following the month in which the invoice is dated, Customer agrees to pay interest thereon after default at the highest lawful contract rate applicable, but never to exceed 18% per annum. In the event it becomes necessary to employ an attorney to enforce collection of said account, Customer agrees to pay all collection costs and attorney fees in the amount of 20% of the amount of the unpaid account. These terms and conditions shall be governed by the law of the state where services are performed or equipment or materials are furnished.

Halliburton warrants only title to the products, supplies and materials and that the same are free from defects in workmanship and materials. THERE ARE NO WARRANTIES, EXPRESS OR IMPLIED, OF MERCHANTABILITY, FITNESS FOR A PARTICULAR PURPOSE OR OTHERWISE WHICH EXTEND BEYOND THOSE STATED IN THE IMMEDIATELY PRECEDING SENTENCE. Halliburton's liability and customer's exclusive remedy in any cause of action (whether in contract, tort, product liability, breach of warranty or otherwise) arising out of the sale or use of any products, supplies or materials is expressly limited to the replacement of such products, supplies or materials on their return to Halliburton or, at Halliburton's option, to the allowance to the customer of credit for the cost of such items. In no event shall Halliburton be liable for special, incidental, indirect, punitive or consequential damages.

PRICE REFERENCE	SECONDARY REF OR PART NO.	L O C	ACCOUNT	DESCRIPTION	UNITS 1		UNITS 2		UNIT PRICE	AMOUNT	
					QTY	MEAS	QTY	MEAS			
000-117		1		MILEAGE	40	ME			2.60	104	00
ERR-960		1		PUMP CHARGE	2	RS	MANOVA		397 ⁵⁰	395	00
090 928		1		ADDITIONAL HOOPS	2	EA			140 ⁰⁰	280	00

THIS IS NOT AN INVOICE

AS PER ATTACHED BULK MATERIAL DELIVERY TICKET NO. **B-573006** 997 83

WAS JOB SATISFACTORILY COMPLETED? _____
WAS OPERATION OF EQUIPMENT SATISFACTORY? _____
WAS PERFORMANCE OF PERSONNEL SATISFACTORY? _____
X CUSTOMER OR HIS AGENT (PLEASE PRINT)
X [Signature] CUSTOMER OR HIS AGENT (SIGNATURE)

WE CERTIFY THAT THE FAIR LABOR STANDARDS ACT OF 1938, AS AMENDED HAS BEEN COMPLIED WITH IN THE PRODUCTION OF GOODS AND OR WITH RESPECT TO SERVICES FURNISHED UNDER THIS CONTRACT.

[Signature]
HALLIBURTON OPERATOR

HALLIBURTON APPROVAL _____
CUSTOMER

RECEIVED
STATE CORPORATION COMMISSION
SUB. APR 1 1993
APPLICABLE TAXES WILL BE ADDED ON INVOICE.

CONSERVATION DIVISION
Wichita, Kansas



A Division of Halliburton Company
DUNCAN, OKLAHOMA 73536

BULK MATERIALS DELIVERY AND TICKET CONTINUATION ORIGINAL

FOR INVOICE AND
TICKET NO. **295262**

DATE 11-27-92	CUSTOMER ORDER NO.	WELL NO. AND FARM 1 DAVIS "B"	COUNTY SEBASTIAN	STATE KS
CHARGE TO DOCKING DEVELOPMENT		OWNER DAVIS "B"	CONTRACTOR SEBASTIAN	No. B573006
MAILING ADDRESS		DELIVERED FROM SAME	LOCATION CODE ALLEN DRUG CO	PREPARED BY BOY PARADIS
CITY & STATE		DELIVERED TO TRAILER IS.	TRUCK NO. 2656	RECEIVED BY RANK
		LOCATION 2656/6680		

PRICE REFERENCE	SECONDARY REF. OR PART NO.	CODE		DESCRIPTION	UNITS 1		UNITS 2		UNIT PRICE	AMOUNT		
		L	D		QTY.	MEAS.	QTY.	MEAS.				
5043-08	516.00261			STANDARD CEMENT BLENDED 60%	69	sk			6.56	452	64	
506-105	516.00286			FOAMIX "A" BLENDED 40%	3404	lb			.052	177	00	
506-121	516.00259			HALLIBURTON GEL 2% ALLOWED	2	sk				N/C		
507-277	516.00259			HALLIBURTON GEL 4% AID.	4	sk			14.75	59	00	
					Returned Mileage Charge							
					TOTAL WEIGHT		LOADED MILES		TON MILES			
					SERVICE CHARGE ON MATERIALS RETURNED		CU. FEET					
					SERVICE CHARGE		CU. FEET		123		1.15	
					Mileage Charge		TOTAL WEIGHT		10484		LOADED MILES	
					500-207		500-306		ST. (T) CORDON		RECEIVED	
					CARRY FORWARD TO INVOICE		SUB-TOTAL		4 1993		83	

THIS IS NOT AN INVOICE



WORK ORDER CONTRACT AND PRE-TREATMENT DATA

ORIGINAL ATTACHED TO INVOICE & TICKET NO. 155739

FORM 1908 R-7 A Division of Halliburton Company

DISTRICT 1st Dist. Ks. DATE 11-17-72

TO: HALLIBURTON SERVICES YOU ARE HEREBY REQUESTED TO FURNISH EQUIPMENT AND SERVICEMEN TO DELIVER AND OPERATE

THE SAME AS AN INDEPENDENT CONTRACTOR TO: Duckwing Development (CUSTOMER) AND DELIVER AND SELL PRODUCTS, SUPPLIES, AND MATERIALS FOR THE PURPOSE OF SERVICING

WELL NO. 13-1 LEASE DAVIS SEC. 31 TWP. 21 RANGE 4.0

FIELD _____ COUNTY Sedgewick STATE Ks OWNED BY _____

THE FOLLOWING INFORMATION WAS FURNISHED BY THE CUSTOMER OR HIS AGENT

FORMATION NAME _____ TYPE _____ FORMATION THICKNESS _____ FROM _____ TO _____ PACKER: TYPE _____ SET AT _____ TOTAL DEPTH 265 MUD WEIGHT _____ BORE HOLE 1 3/4 INITIAL PROD: OIL _____ BPD, H2O _____ BPD, GAS _____ MCF PRESENT PROD: OIL _____ BPD, H2O _____ BPD, GAS _____ MCF

Table with columns: NEW USED, WEIGHT, SIZE, FROM, TO, MAX. ALLOW. P.S.L. Rows include CASING, LINER, TUBING, OPEN HOLE, PERFORATIONS.

PREVIOUS TREATMENT: DATE _____ TYPE _____ MATERIALS _____

TREATMENT INSTRUCTIONS: TREAT THRU TUBING ANNULUS CASING TUBING/ANNULUS HYDRAULIC HORSEPOWER ORDERED 5000 8 3/4 CSG w/ 175 SKS FORWARD 3 1/2 CC

CUSTOMER OR HIS AGENT WARRANTS THE WELL IS IN PROPER CONDITION TO RECEIVE THE PRODUCTS, SUPPLIES, MATERIALS, AND SERVICES

As consideration, the above-named Customer agrees: THIS CONTRACT MUST BE SIGNED BEFORE WORK IS COMMENCED

- a) To pay Halliburton in accord with the rates and terms stated in Halliburton's current price list. Invoices are payable NET by the 20th of the following month after date of invoice.
b) To defend, indemnify, release and hold harmless Halliburton, its divisions, subsidiaries, parent and affiliated companies and the officers, directors, employees, agents and servants of all of them from and against any claims, liability, expenses, attorneys fees, and costs of defense to the extent permitted by law for:
1. Damage to property owned by, in the possession of, or leased by Customer, and/or the well owner (if different from Customer), including, but not limited to, surface and subsurface damage.
2. Reservoir, formation, or well loss or damage, subsurface trespass or any action in the nature thereof.
3. Personal injury or death or property damage (including, but not limited to, damage to the reservoir, formation or well), or any damages whatsoever, growing out of or in any way connected with or resulting from pollution, subsurface pressure, losing control of the well and/or a well blowout or the use of radioactive material.
c) The defense, indemnity, release and hold harmless obligations of Customer provided for in this Section b) and Section c) below shall apply to claims or liability even if caused or contributed to by Halliburton's negligence, strict liability, or the unseaworthiness of any vessel owned, operated, or furnished by Halliburton or any defect in the data, products, supplies, materials, or equipment of Halliburton whether in the preparation, design, manufacture, distribution, or marketing thereof, or from a failure to warn any person of such defect.
d) That Halliburton warrants only title to the products, supplies and materials and that the same are free from defects in workmanship and materials. THERE ARE NO WARRANTIES, EXPRESS OR IMPLIED, OF MERCHANTABILITY, FITNESS OR OTHERWISE WHICH EXTEND BEYOND THOSE STATED IN THE IMMEDIATELY PRECEDING SENTENCE.
e) That Customer shall, at its risk and expense, attempt to recover any Halliburton equipment, tools or instruments which are lost in the well and if such equipment, tools or instruments are not recovered, Customer shall pay Halliburton its replacement cost unless such loss is due to the sole negligence of Halliburton.
f) To waive the provisions of the Deceptive Trade Practices - Consumer Protection Act, to the extent permitted by law.
g) That this contract shall be governed by the law of the state where services are performed or materials are furnished.
h) That Halliburton shall not be bound by any changes or modifications in this contract, except where such change or modification is made in writing by a duly authorized executive officer of Halliburton.

I HAVE READ AND UNDERSTAND THIS CONTRACT AND REPRESENTATION COMMISSION THAT I AM AUTHORIZED TO SIGN THE SAME AS CUSTOMER'S AGENT.

SIGNED [Signature] CUSTOMER APR 14 1993

DATE 11-17-72

TIME _____ A.M. P.M.

We certify that the Fair Labor Standards Act of 1938, as amended, has been complied with in the production of goods and/or with respect to services furnished under this contract.

CUSTOMER

CONSERVATION DIVISION Wichita, Kansas

HALLIBURTON SERVICES
JOB LOG

FORM 2013 R-2

WELL NO. B-1 LEASE DAVIS TICKET NO. 253739
 CUSTOMER Decking Development PAGE NO. _____
 JOB TYPE 8 1/2" SURFACE DATE 11-17-92

CHART NO.	TIME	RATE (BPM)	VOLUME (BBL) (GAL)	PUMPS		PRESSURE (PSI)		DESCRIPTION OF OPERATION AND MATERIALS
				T	C	TUBING	CASING	
	1:00							Called out
	2:00							on loc - Rig cutting 2nd HOLE 2nd HOLE - STAINLESS HOLE MAKE START OUT w/ DRILL PIPE DRILL PIPE OUT 1 HOLE START 5 1/2" CASING TO HOLE CASING TO HOLE Hook to Rig and Pump RISK CIRCULATION FINISH CIRCULATION Hook to Hoses - Cement as follows: 1000 Fresh H ₂ O SPACK START MIXING CEMENT FINISH MIXING CEMENT RELEASE MUD START DISPLACEMENT Mud Down Cement to surface - Hole to Top called to Finish your cement Job Complete Thank you Call again Dell
	7:50							
	0515							
	0555							
	0601	5.0	3.0	✓	-			
			0	✓	-			
	0603	5.1		✓	✓			
	0610	5.1	16.7	-	-			
	0612	5.1	0	✓	✓			
	0615	5.1	16.0	✓	-			
	0650							

ORIGINAL

RECEIVED
STATE CORPORATION COMMISSION

APR 14 1993

CONSERVATION DIVISION
Wichita, Kansas

CUSTOMER



JOB SUMMARY

HALLIBURTON DIVISION Oilfield ServicesHALLIBURTON LOCATION 131st St KSORIGINAL BILLED ON TICKET NO. 253739

WELL DATA

FIELD _____ SEC. 21 TWP. 27 RNG. 4W COUNTY SENGWICK STATE KS

FORMATION NAME _____ TYPE _____

FORMATION THICKNESS _____ FROM _____ TO _____

INITIAL PROD: OIL _____ BPD. WATER _____ BPD. GAS _____ MCFD

PRESENT PROD: OIL _____ BPD. WATER _____ BPD. GAS _____ MCFD

COMPLETION DATE _____ MUD TYPE _____ MUD WT. _____

PACKER TYPE _____ SET AT _____

BOTTOM HOLE TEMP. _____ PRESSURE _____

MISC. DATA _____ TOTAL DEPTH 265

	NEW USED	WEIGHT	SIZE	FROM	TO	MAXIMUM PSI ALLOWABLE
CASING	<u>N</u>	<u>20</u>	<u>8 1/8</u>	<u>49</u>	<u>260</u>	
LINER						
TUBING						
OPEN HOLE						SHOTS/FT.
PERFORATIONS						
PERFORATIONS						
PERFORATIONS						

JOB DATA

TOOLS AND ACCESSORIES

TYPE AND SIZE	QTY.	MAKE
FLOAT COLLAR		
FLOAT SHOE		
GUIDE SHOE		
CENTRALIZERS		
BOTTOM PLUG		
TOP PLUG <u>CP1</u>	<u>1</u>	<u>Hess</u>
HEAD <u>PC</u>	<u>1</u>	<u>"</u>
PACKER		
OTHER		

CALLED OUT	ON LOCATION	JOB STARTED	JOB COMPLETED
DATE <u>11-17</u>	DATE <u>11-17</u>	DATE <u>11-18</u>	DATE <u>11-18</u>
TIME <u>1800</u>	TIME <u>2000</u>	TIME <u>0601</u>	TIME <u>0630</u>

PERSONNEL AND SERVICE UNITS

NAME	UNIT NO. & TYPE	LOCATION
<u>D. English</u>	<u>01640</u>	<u>131st St</u>
<u>K. Dittus</u>	<u>86660</u>	<u>50120 (P)</u>
<u>L. A. Jones</u>	<u>41254</u>	<u>Bulk</u>

MATERIALS

TREAT. FLUID _____ DENSITY _____ LB/GAL-API

DISPL. FLUID _____ DENSITY _____ LB/GAL-API

PROP. TYPE _____ SIZE _____ LB.

PROP. TYPE _____ SIZE _____ LB.

ACID TYPE _____ GAL. _____ %

ACID TYPE _____ GAL. _____ %

ACID TYPE _____ GAL. _____ %

SURFACTANT TYPE _____ GAL. _____ IN

NE AGENT TYPE _____ GAL. _____ IN

FLUID LOSS ADD. TYPE _____ GAL-LB. _____ IN

GELLING AGENT TYPE _____ GAL-LB. _____ IN

FRIC. RED. AGENT TYPE _____ GAL-LB. _____ IN

BREAKER TYPE _____ GAL-LB. _____ IN

BLOCKING AGENT TYPE _____ GAL-LB. _____ IN

PERFPAC BALLS TYPE _____ QTY. _____

OTHER _____

OTHER _____

DEPARTMENT Production

DESCRIPTION OF JOB Completed 2 1/2" SWAB & CIP

JOB DONE THRU: TUBING CASING ANNULUS TBG/ANN.

CUSTOMER REPRESENTATIVE X [Signature]

HALLIBURTON OPERATOR [Signature] COPIES REQUESTED _____

CEMENT DATA

STAGE	NUMBER OF SACKS	CEMENT	BRAND	BULK SACKED	ADDITIVES	YIELD CU.FT/SK.	MIXED LBS./GAL.
	<u>115</u>	<u>Sulphur</u>	<u>Duffield B</u>	<u>3 1/2 CC</u>		<u>1.18</u>	<u>15.6</u>

PRESSURES IN PSI

CIRCULATING _____ DISPLACEMENT _____

BREAKDOWN _____ MAXIMUM _____

AVERAGE _____ FRACTURE GRADIENT _____

SHUT-IN: INSTANT _____ 5-MIN. _____ 15-MIN. _____

ORDERED _____ AVAILABLE _____ USED _____

AVERAGE RATES IN BPM _____

TREATING _____ DISPL. _____ OVERALL _____

CEMENT LEFT IN PIPE _____

FEET 15 REASON 3 1/2" Sulphur

SUMMARY

PRESLUSH: BBL-GAL. _____ TYPE 1/20

LOAD & BKDN: BBL-GAL. _____ PAD: BBL-GAL. _____

TREATMENT: BBL-GAL. _____ DISPL: BBL-GAL. 16

CEMENT SLURRY: BBL-GAL. 36.7

TOTAL VOLUME: BBL-GAL. _____

REMARKS

See Job Log

[Signature]

[Signature]

RECEIVED STATE CORPORATION COMMISSION

APR 14 1993

CONSERVATION DIVISION
Wichita, Kansas

CUSTOMER: Doc King Production Lease DATE: 11-18-93



FORM 1906 R-11

WELL NO. - FARM OR LEASE NAME B-1 DAVIS		COUNTY SENGUICK	STATE KS	CITY / OFFSHORE LOCATION	DATE 11-17-92
CHARGE TO DOCKING DEVELOPMENT		OWNER JANE	TICKET TYPE (CHECK ONE) SERVICE <input checked="" type="checkbox"/> SALES <input type="checkbox"/>		NITROGEN JOB YES <input type="checkbox"/> NO <input checked="" type="checkbox"/>
ADDRESS		CONTRACTOR ALLEN DRILLING	1 LOCATION 1 Pkwy KS		CODE 253735
CITY, STATE, ZIP		SHIPPED VIA 50120	FREIGHT CHARGES <input type="checkbox"/> FPD <input type="checkbox"/> COLLECT		2 LOCATION
WELL TYPE 01	WELL CATEGORY 01	WELL PERMIT NO.	DELIVERED TO LOC		3 LOCATION
TYPE AND PURPOSE OF JOB 010		B- 573091	ORDER NO.		REFERRAL LOCATION

As consideration, the above-named Customer agrees to pay Halliburton in accord with the rates and terms stated in Halliburton's current price list. Invoices payable NET by the 20th of the following month after date of invoice. Upon Customer's default in payment of Customer's account by the last day of the month following the month in which the invoice is dated, Customer agrees to pay interest thereon after default at the highest lawful contract rate applicable, but never to exceed 18% per annum. In the event it becomes necessary to employ an attorney to enforce collection of said account, Customer agrees to pay all collection costs and attorney fees in the amount of 20% of the amount of the unpaid account. These terms and conditions shall be governed by the law of the state where services are performed or equipment or materials are furnished.

Halliburton warrants only title to the products, supplies and materials and that the same are free from defects in workmanship and materials. THERE ARE NO WARRANTIES, EXPRESS OR IMPLIED, OF MERCHANTABILITY, FITNESS FOR A PARTICULAR PURPOSE OR OTHERWISE WHICH EXTEND BEYOND THOSE STATED IN THE IMMEDIATELY PRECEDING SENTENCE. Halliburton's liability and customer's exclusive remedy in any cause of action (whether in contract, tort, product liability, breach of warranty or otherwise) arising out of the sale or use of any products, supplies or materials is expressly limited to the replacement of such products, supplies or materials on their return to Halliburton or, at Halliburton's option, to the allowance to the customer of credit for the cost of such items. In no event shall Halliburton be liable for special, incidental, indirect, punitive or consequential damages.

PRICE REFERENCE	SECONDARY REF OR PART NO.	L O C.	ACCOUNT	DESCRIPTION	UNITS 1		UNITS 2		UNIT PRICE	AMOUNT	
					QTY	MEAS	QTY	MEAS			
006 117				MILEAGE	40	MILES	1	260	260	104	00
001-016				PUMP CHARGE	263	BT	8	475	475	475	00
030 503				TOP Plug	1	EA	8 1/8 IN	90	90	90	00
<p style="font-size: 2em; opacity: 0.5;">THIS IS NOT AN INVOICE</p>											

AS PER ATTACHED BULK MATERIAL DELIVERY TICKET NO. B- 573091 1762 85

WAS JOB SATISFACTORILY COMPLETED? _____

WAS OPERATION OF EQUIPMENT SATISFACTORY? _____

WAS PERFORMANCE OF PERSONNEL SATISFACTORY? _____

X CUSTOMER OR HIS AGENT (PLEASE PRINT)
HALLIBURTON OPERATOR

X CUSTOMER OR HIS AGENT (SIGNATURE)
[Signature]

WE CERTIFY THAT THE FAIR LABOR STANDARDS ACT OF 1938, AS AMENDED HAS BEEN COMPLIED WITH IN THE PRODUCTION OF GOODS AND OR WITH RESPECT TO SERVICES FURNISHED UNDER THIS CONTRACT.

[Signature]
HALLIBURTON OPERATOR

HALLIBURTON APPROVAL

CUSTOMER

SUB TOTAL

APPLICABLE TAXES WILL BE ADDED ON INVOICE.



A Division of Halliburton Company
DUNCAN, OKLAHOMA 73538

BULK MATERIALS DELIVERY AND TICKET CONTINUATION

FOR INVOICE AND
TICKET NO. **253739**

ORIGINAL

DATE 11-18-92	CUSTOMER ORDER NO.	WELL NO. AND FARM 1 DAVIS	COUNTY SEDGWICK	STATE KS
CHARGE TO DOCKING DEVELOPMENT	OWNER DAVIS	CONTRACTOR ALLEN DRIG CO	No. B573091	
MAILING ADDRESS	DELIVERED FROM SAME	LOCATION CODE 25555	PREPARED BY DON PARADIS	
CITY & STATE	DELIVERED TO DRATT, KS.	TRUCK NO. 2656/5621	RECEIVED BY Bigler	
LOCATION				

PRICE REFERENCE	SECONDARY REF. OR PART NO.	CODE		DESCRIPTION	UNITS 1		UNITS 2		UNIT PRICE	AMOUNT		
		L	D		QTY.	MEAS.	QTY.	MEAS.				
504-308	516.00261			STANDARD CEMENT	175	sk			6.56	1148	00	
509-406	890.50812			CALCIUM CHLORIDE 3%	5	sk			26.50	132	50	
THIS IS NOT AN INVOICE												
		Returned Mileage Charge	TOTAL WEIGHT		LOADED MILES		TON MILES					
		SERVICE CHARGE ON MATERIALS RETURNED							CU. FEET			
500-207		SERVICE CHARGE				CU. FEET		185	1.15	212	75	
500-306		Mileage Charge	16,850 TOTAL WEIGHT		40 LOADED MILES		337 TON MILES		.80	269	65	
No. B 573091		CARRY FORWARD TO INVOICE							SUB-TOTAL		1762 85	