

PLAT AND CERTIFICATION OF ACREAGE ATTRIBUTABLE TO AN OIL WELL

State Corporation Commission, Conservation Division
200 Colorado Derby Bldg. Wichita, Kansas 67202

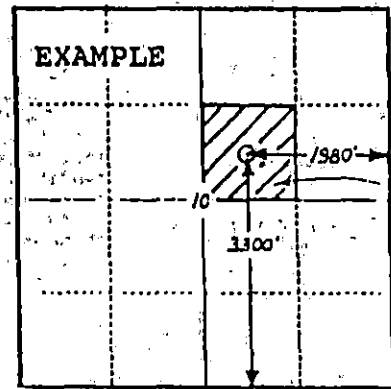
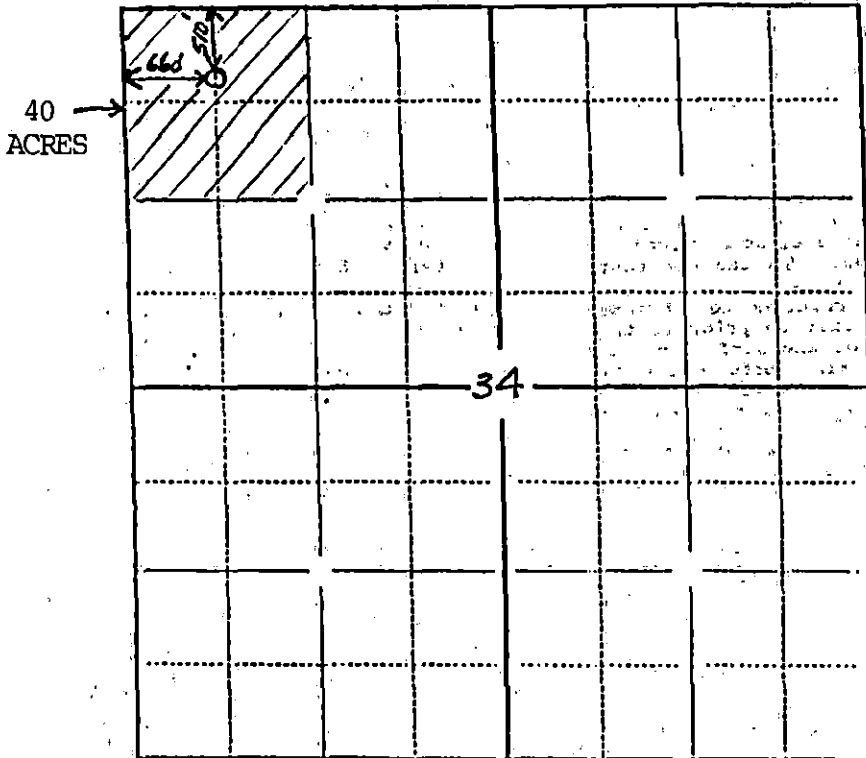
OPERATOR Jim Emerson
LEASE NAME Clark
WELL NUMBER 1
FIELD Fruit Extension
NUMBER OF ACRES ATTRIBUTED TO WELL 40

LOCATION OF WELL:

4770 feet north of SE corner
4620 feet west of SE corner
34 Sec. 27 T. 16 R.
COUNTY Kiowa

PLAT

(Show location of well and shade attributable acreage)
(Show footage to nearest lease or unit boundary line)



15-097-21305

The undersigned hereby certifies that he is Jim Emerson for Self (Co.), a duly authorized agent, that all information shown hereon is true and correct to the best of his knowledge and belief, and that all acreage claimed as attributable to the well named herein is held by production from that well.

Subscribed and sworn to before me on this 27th day of December 1990

My Commission expires _____

Jim Emerson
Notary Public

RECEIVED
STATE CORPORATION COMMISSION

ANNE WELLS
Notary Public
State Of Texas
My Comm. Exp. Oct. 22, 1992

(6-1989)
RECEIVED
STATE CORPORATION COMMISSION

JAN 8 1991

JAN 3 1991

Wichita, Kansas

CONSERVATION DIVISION
Wichita, Kansas

1-3-1991