

STATE OF KANSAS
STATE CORPORATION COMMISSION

WELL PLUGGING RECORD

Give All Information Completely
Make Required Affidavit
Mail or Deliver Report to:
Conservation Division
State Corporation Commission
211 No. Broadway
Wichita, Kansas

STANTON County. Sec. 27 Twp. 27 Rge. 41 ~~W~~ W (W)

Location as "NE/CNW/SW" or footage from lines NW NW NW

Lease Owner PETROLEUM, INC.

Lease Name PICKARTS GAS UNIT Well No. 1

Office Address Route 2, Great Bend, Kansas

Character of Well (completed as Oil, Gas or Dry Hole) Dry Hole

Date well completed September 5, 19 57

Application for plugging filed September 12, 19 57

Application for plugging approved September 5, 19 57

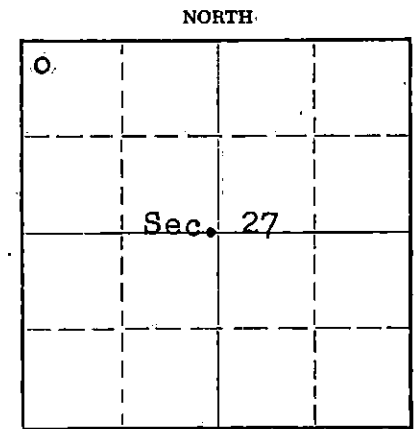
Plugging commenced September 5, 19 57

Plugging completed September 5, 19 57

Reason for abandonment of well or producing formation Decided not to complete hole.

If a producing well is abandoned, date of last production None 19

Was permission obtained from the Conservation Division or its agents before plugging was commenced? Yes



Locate well correctly on above Section Plat

Name of Conservation Agent who supervised plugging of this well M.A. Rives Box 8, Pratt, Kansas

Producing formation ----- Depth to top --- Bottom --- Total Depth of Well 702 Feet

Show depth and thickness of all water, oil and gas formations.

OIL, GAS OR WATER RECORDS

CASING RECORD

FORMATION	CONTENT	FROM	TO	SIZE	PUT IN	PULLED OUT
					None	None

Describe in detail the manner in which the well was plugged, indicating where the mud fluid was placed and the method or methods used in introducing it into the hole. If cement or other plugs were used, state the character of same and depth placed, from feet to feet for each plug set.

Placed 75 sacks cement through drill pipe on to bottom at 702'.
Checked cement after setting 4 hours and found it at 440'. Placed
200 sacks cement through drill pipe from 440' to base of well cellar.
Checked cement in 24 hours, found solid cement at 7'.

9-18-57

RECEIVED
STATE CORPORATION COMMISSION

SEP 18 1957

CONSERVATION DIVISION

(If additional description is necessary, use BACK of this sheet)

Name of Plugging Contractor Rosencrantz-Bemis
Address 281 By-Pass, Great Bend, Kansas

STATE OF KANSAS, COUNTY OF BARTON, ss.
Don Searle (employee of owner) or (owner or operator) of the above-described

well, being first duly sworn on oath, says: That I have knowledge of the facts, statements, and matters herein contained and the log of the above-described well as filed and that the same are true and correct. So help me God.

(Signature) Don Searle

Route 2, Great Bend, Kansas
(Address)

SUBSCRIBED AND SWORN TO before me this 16th day of September, 19 57

Delbert Brown
Notary Public.

My commission expires July 11, 1960

PLUGGING
FILE SEC. 27 T. 27 R. 41W
BOOK PAGE 43 LINE 28

RECEIVED
STATE CORPORATION COMMISSION
SEP 18 1957
CONSERVATION DIVISION

WELL LOG

COMPANY PETROLEUM, INCORPORATED

SEC. 27 T. 27S R. 41W

FARM PICKART GAS UNIT NO. 1

LOC. NW, NW, NW

TOTAL DEPTH 702'

COUNTY Stanton Co., Kansas

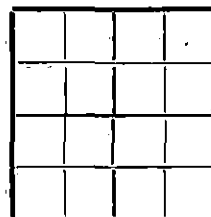
COMM. August 28, 1957

COMP. September 8, 1957

Sub-CONTRACTOR ROSENCRANTZ-BEMIS EQUIPMENT CO.

Contractor: GARVEY DRILLING COMPANY

CASING None



ELEVATION

PRODUCTION Plugged & Abandoned

FIGURES INDICATE BOTTOM OF FORMATIONS

300	Surface soil, sand & gravel.
600	Sand rock
702	Red bed
702	T. D.

This well abandoned @ 702', no surface casing set./.

RECEIVED
STATE CORPORATION COMMISSION

SEP 18 1957

CONSERVATION DIVISION
Wichita, Kansas

PLUGGING
 FILE SEC. 27 T. 27 R. 41W
 BOOK PAGE 43 LINE 28

State of KANSAS }
County of BARTON } ss:

I, Verne A. Morris of Garvey Drilling Co.

upon oath state that the above and foregoing is a true and correct copy of the log of the #1 Pickart GU well

Subscribed and sworn to before me this 13th day of September 19 57

My Commission Expires: November 12, 1958

Verne A. Morris
 STATE CORPORATION COMMISSION
 SEP 18 1957
 NOTARY PUBLIC
 WICHITA, KANSAS