

TYPE

NOTICE OF INTENTION TO DRILL

✓ C-1

TO BE FILED WITH THE STATE CORPORATION COMMISSION
PRIOR TO COMMENCEMENT OF WELL

API Number 15-151-20,476
(For office use only) -00-00

1. Operator Hinkle Oil Company

Starting Date February 20, 1978

Address 1016 Union Center, Wichita, Kansas 67202

County Pratt

2. Contractor Union Drilling Company, Inc.

Sec 31 Twp 29 S Rge 13 W

Address 505 Union Center, Wichita, Kansas 67202

Spot Location C S/2 SW NE

3. Type of Equipment: Rotary X Cable Tool _____

Nearest Lease Line 330 ft.

4. Well to be Drilled for: Oil X Gas X

Lease Name Lambert

Disposal _____ Input _____ Other _____

5. Depth of Deepest Fresh Water within 1 mile None ft.

6. Depth of Municipal Water Well within 3 miles None ft.

7. Depth to Protect all Fresh Water 125 ft.

8. Amount of Surface Casing to be set 250 ft.

Est. Total Depth 4750 ft.

9. Alternate No. 1 X No. 2 X

REMARKS:

OPERATOR STATES THAT HE WILL COMPLY WITH K. S. A. 55-128

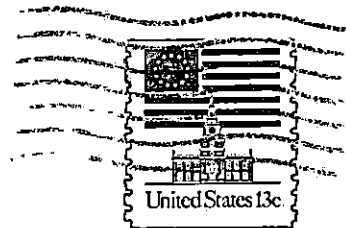
HINKLE OIL COMPANY

Signature of Operator BY: Orvie Howell

Orvie Howell

[Handwritten initials]





State Corporation Commission of Kansas
Conservation Division
P. O. Box 17027
Wichita, Kansas 67217

02-16-78

(IF PREFERRED, MAIL IN ENVELOPE)