

STATE CORPORATION COMMISSION OF KANSAS  
OIL & GAS CONSERVATION DIVISION  
WELL COMPLETION FORM  
ACO-1 WELL HISTORY  
DESCRIPTION OF WELL AND LEASE

Operator: License 8061

Name: OIL PRODUCERS, INC. OF KANSAS

Address P.O. BOX 8647

City/State/Zip WICHITA, KANSAS 67208

Purchaser: WICHITA INDUSTRIAL

Operator Contact Person: DIANA RICHECKY

Phone (316) 681-0231

Contractor: Name: PICKRELL DRILLING CO.

License: 5123

Wellsite Geologist: WILLIAM SHEPHERD

Designate Type of Completion

New Well  Re-Entry  Workover

Oil  SWD  SIOW  Temp. Abd.  
 Gas  ENHR  SIGW  
 Dry  Other (Core, WSW, Expl., Cathodic, etc)

If Workover:

Operator: \_\_\_\_\_

Well Name: \_\_\_\_\_

Comp. Date \_\_\_\_\_ Old Total Depth \_\_\_\_\_

Deepening  Re-perf.  Conv. to Inj/SWD  
 Plug Back  PBDT  
 Commingled  Docket No. \_\_\_\_\_  
 Dual Completion  Docket No. \_\_\_\_\_  
 Other (SWD or Inj?)  Docket No. \_\_\_\_\_

03/04/99 \_\_\_\_\_ 03/19/99 \_\_\_\_\_ 04/12/99 \_\_\_\_\_  
Spud Date Date Reached TD Completion Date

API NO. 15- 097-21437-0000

County KIOWA

NE - NW - NW Sec. 34 Twp. 29 Rge. 19 E  
W

4790 Feet from S N (circle one) Line of Section

3970 Feet from E W (circle one) Line of Section

Footages Calculated from Nearest Outside Section Corner:  
NE, SE NW or SW (circle one)

Lease Name SMITH-UNRUH Well # 2

Field Name ALFORD

Producing Formation MISSISSIPPI DOLOMITE

Elevation: Ground 2332 KB 2337

Total Depth 5225' PBDT 5175'

Amount of Surface Pipe Set and Cemented at 605

Multiple Stage Cementing Collar Used?  Yes  No

If yes, show depth set \_\_\_\_\_ Feet

If Alternate II completion, cement circulated from \_\_\_\_\_

feet depth to \_\_\_\_\_ w/ \_\_\_\_\_ sx cmt.

Drilling Fluid Management Plan Att. 1, 8-12-99 U.C.  
(Data must be collected from the Reserve Pit)

Chloride content 32000 ppm Fluid volume 320 bbls

Dewatering method used: EVAPORATION AND RESTORE SITE

Location of fluid disposal if hauled offsite: \_\_\_\_\_

Operator Name \_\_\_\_\_

Lease Name \_\_\_\_\_ License No. \_\_\_\_\_

Quarter \_\_\_\_\_ Sec. \_\_\_\_\_ Twp. \_\_\_\_\_ S Rng. \_\_\_\_\_ E/W

County \_\_\_\_\_ Docket No. \_\_\_\_\_

STATE CORPORATION COMMISSION  
RECEIVED  
7-23-99  
JUL 23 1999  
COMPLETION DIVISION  
Wichita, Kansas

INSTRUCTIONS: An original and two copies of this form shall be filed with the Kansas Corporation Commission, 200 Colorado Derby Building, Wichita, Kansas 67202, within 120 days of the spud date, recompletion, workover or conversion of a well. Rule 82-3-130, 82-3-106 and 82-3-107 apply. Information on side two of this form will be held confidential for a period of 12 months if requested in writing and submitted with the form (see rule 82-3-107 for confidentiality in excess of 12 months). One copy of all wireline logs and geologist well report shall be attached with this form. ALL CEMENTING TICKETS MUST BE ATTACHED. Submit CP-4 form with all plugged wells. Submit CP-111 form with all temporarily abandoned wells.

All requirements of the statutes, rules and regulations promulgated to regulate the oil and gas industry have been fully complied with and the statements herein are complete and correct to the best of my knowledge.

Signature John S. Weir John S. Weir

Title President Date 7/22/99

Subscribed and sworn to before me this 22nd of July, 1999.

Notary Public Diana L. Richecky

Date Commission Expires Jan, 13, 2000

K.C.C. OFFICE USE ONLY  
F  Letter of Confidentiality Attached  
C  Wireline Log Received  
C  Geologist Report Received  
Distribution  
 KCC  SWD/Rep  NGPA  
 KGS  Plug  Other (Specify)

DIANA L. RICHECKY  
Notary Public - State of Kansas  
My Appt. Expires 1/13/2000

Operator Name Oil Producers, Inc. of Kansas Lease Name SMITH-UNRUH Well # 2 **ORIGINAL**  
 Sec. 34 Twp. 29S Rge. 19  East County KIOWA  West

**INSTRUCTIONS:** Show important tops and base of formations penetrated. Detail all cores. Report all drill stem tests giving interval tested, time tool open and closed, flowing and shut-in pressures, whether shut-in pressure reached static level, hydrostatic pressures, bottom hole temperature, fluid recovery, and flow rates if gas to surface during test. Attach extra sheet if more space is needed. Attach copy of log.

Drill Stem Tests Taken  Yes  No  Log  Formation (Top), Depth and Datums  Sample  
 (Attach Additional Sheets.)  
 Samples Sent to Geological Survey  Yes  No  
 Cores Taken  Yes  No  
 Electric Log Run  Yes  No  
 (Submit Copy)  
 List All E.Logs Run: GEOLOGICAL LOG, COMPENSATED NEUTRON |  
DENSITY PE, GAMMA RAY CORRELATION |  
CEMENT BOND LOG, DUAL INDUCTION LOG  
SONIC LOG

Name	Top	Datum
HEEBNER	4275'	-1938'
BROWN LIME	4457'	-2120'
LANSING KANSAS CITY	4476'	-2139'
STARK SHALE	4754'	-2417'
MISSISSIPPI	5086'	-2749'
LTD	5227'	-2890'

**CASING RECORD**  New  Used  
 Report all strings set-conductor, surface, intermediate, production, etc.

Purpose of String	Size Hole Drilled	Size Casing Set (In O.D.)	Weight Lbs./Ft.	Setting Depth	Type of Cement	# Sacks Used	Type and Percent Additives
SURFACE	12 1/4	8 5/8"	28#	605	MID-CON	330	3% CC, 2% GEL
PRODUCTION	7 7/8	4 1/2"	10.5 #	5226	EA-2	110	

**ADDITIONAL CEMENTING/SQUEEZE RECORD**

Purpose:	Depth Top Bottom	Type of Cement	#Sacks Used	Type and Percent Additives
<input type="checkbox"/> Perforate				
<input type="checkbox"/> Protect Casing				
<input type="checkbox"/> Plug Back TD				
<input type="checkbox"/> Plug Off Zone				

Shots Per Foot	PERFORATION RECORD - Bridge Plugs Set/Type Specify Footage of Each Interval Perforated	Acid, Fracture, Shot, Cement Squeeze Record (Amount and Kind of Material Used)	
		Depth	Depth
3	5108-5122'	SEE ATTACHED INITIAL COMPLETION REPORT	same

**TUBING RECORD** Size 2 3/8" Set At 5181.18' Packer At \_\_\_\_\_ Liner Run  Yes  No

Date of First, Resumed Production, SWD or Inj. \_\_\_\_\_ Producing Method X

Estimated Production	Oil Bbls.	Gas 320mcfpd	Mcf	Water 7 BWPD	Flowing Bbls.	Pumping Gas-Oil Ratio	Gas Lift	Other (Explain)	Gravity
	15.87								

Disposition of Gas:  Vented  Sold  Used on Lease (If vented, submit ACO-18.)

**METHOD OF COMPLETION**

Open Hole  Perf.  Dually Comp.  Commingled 5108-5122'

Other (Specify) \_\_\_\_\_

RECEIVED  
 STATE CORPORATION COMMISSION  
 JUL 23 1999  
 CONSERVATION DIVISION  
 Wichita Kansas



CONTROL NO. Oil Producers, Inc. of Kansas  
 ADDRESS \_\_\_\_\_  
 CITY, STATE, ZIP CODE Wichita, Ks.

11/11/99  
 No. 1264 ORIGINAL  
 PAGE 1 OF #/

SERVICE LOCATIONS 1. <u>Ness City, Ks.</u>	WELL/PROJECT NO. <u># 2</u>	LEASE <u>Smith-Urrah</u>	COUNTY/PARISH <u>Kiowa</u>	STATE <u>Ks</u>	CITY <u>Ness City, Ks</u>	DATE <u>3-5-99</u>	OWNER <u>Same</u>
2.	TICKET TYPE <input checked="" type="checkbox"/> SERVICE <input type="checkbox"/> SALES	CONTRACTOR <u>Pickrell, Drlg Co. Inc</u>	RIG NAME/NO.	SHIPPED VIA	DELIVERED TO. <u>S/W of Greensburg, Ks</u>	ORDER NO.	
3.	WELL TYPE <u>Oil Gas</u>	WELL CATEGORY <u>Development</u>	JOB PURPOSE <u>Surface emt - new well</u>	WELL PERMIT NO.	WELL LOCATION		
4.	REFERRAL LOCATION	INVOICE INSTRUCTIONS					

PRICE REFERENCE	SECONDARY REFERENCE/ PART NUMBER	ACCOUNTING			DESCRIPTION	QTY.		UNIT PRICE		AMOUNT
		LOC	ACCT	DF		QTY.	U/M	QTY.	U/M	
575		1			MILEAGE Trk #104	40	mi	2	00	90.00
576		1			Pump Service	600	ft	450	00	450.00
410		1			To. p Plug wooden top Plug	1	ea	88	00	56.00
403		1			Cement Basket	1	ea	88	00	160.00
325		1			60/40 pozmix 2gal	330	sk	5	00	1650.00
278		1			Calcium Chloride	8	sk	25	00	200.00
581		1			Service Charge	330	sk	1	00	330.00
583		1			Drayage	62485	TM		75	468164

RECEIVED  
 STATE CORPORATION COMMISSION  
 JUL 13 1999  
 OCSER-VAFI010 DIVISION  
 Wichita Kansas

**LEGAL TERMS:** Customer hereby acknowledges and agrees to the terms and conditions on the reverse side hereof which include, but are not limited to, PAYMENT, RELEASE, INDEMNITY, and LIMITED WARRANTY provisions.

MUST BE SIGNED BY CUSTOMER OR CUSTOMER'S AGENT PRIOR TO START OF WORK OR DELIVERY OF GOODS

X. Mike Kern

DATE SIGNED 3-5-99 TIME SIGNED 7:00  A.M.  P.M.

REMIT PAYMENT TO:  
 SWIFT SERVICES, INC.  
 P.O. BOX 466  
 NESS CITY, KS 67560  
 785-798-2300

SURVEY	AGREE	UN-DECIDED	DIS-AGREE
OUR EQUIPMENT PERFORMED WITHOUT BREAKDOWN?			
WE UNDERSTOOD AND MET YOUR NEEDS?			
OUR SERVICE WAS PERFORMED WITHOUT DELAY?			
WE OPERATED THE EQUIPMENT AND PERFORMED JOB CALCULATIONS SATISFACTORILY?			
ARE YOU SATISFIED WITH OUR SERVICE?	<input type="checkbox"/> YES <input type="checkbox"/> NO		
<input type="checkbox"/> CUSTOMER DID NOT WISH TO RESPOND			

PAGE TOTAL 3404.64

TAX 113.17

already pd  
 TOTAL 3109.25

255.98

ORIGINAL

CUSTOMER ACCEPTANCE OF MATERIALS AND SERVICES The customer hereby acknowledges receipt of the materials and services listed on this ticket.

SWIFT OPERATOR Loqq fuchs APPROVAL Rec'd 3-27-99 Intangible Thank You!

**JOB LOG**

**SWIFT Services, Inc.**

DATE 3-5-89 PAGE NO. 2/1

CUSTOMER *Oil Producers, Inc.* WELL NO. LEASE JOB TYPE *Cmt Surface Csg* TICKET NO. *1204*

CHART NO.	TIME	RATE (BPM)	VOLUME (BBL) (GAL)	PUMPS		PRESSURE (PSI)		DESCRIPTION OF OPERATION AND MATERIALS
				T	C	TUBING	CASING	
	04:00							Called out
	07:10							On location / set up Trk
	1-							Big coming out of hole w/ 7 7/8 bit
	08:30							Run back in to 610 ft w/ 12 1/4" bit
	09:30							Circulate
	09:25							Pull Drlg Pipe
	09:45							Run csg. 605 ft
	10:45							Csg on bottom
	10:50							hookup to csg
	11:00							Started circulating
	11:15							Done circulating
	11:28							Chained down 8 5/8" csg
	11:22							Started mixing cmt 330 sts 60/40 pzmix 22 gal 320cc
	11:37	5	77					Done mixing cmt
	11:38							Released plug
	11:39	6						Started displacement
	11:45	6	36 1/2				250	Done w/ displacement Cement did circ. 50sts to pit. ↓
	11:45							Shut in at well head washed up trk
								Racked up trks
	12:00							Job completed Thank you Jed Fuchs

RECEIVED

STATE CORPORATION COMMISSION

JUN 23 1989

CONSERVATION DIVISION  
Wichita Kansas

T. Fuchs = 01  
L. Dunkel = 06  
W. Wilson = 07

Pump Trk #104  
Bulk Trk #301



CHARGE TO: *Oil Producers Inc. of Kansas*  
 ADDRESS:  
 CITY, STATE, ZIP CODE:

**CEMENT LONG STRING** TICKET  
*Intangible* No. **1199**  
**ORIGINAL**  
 PAGE 1 OF 2

SERVICE LOCATIONS 1. <i>Ness City, ks</i>	WELL/PROJECT NO. <i>#2</i>	LEASE <i>Smith-Uruch</i>	COUNTY/PARISH <i>kiowa</i>	STATE <i>Ks.</i>	CITY	DATE <i>3-19-99</i>	OWNER <i>Same</i>
2.	TICKET TYPE <input checked="" type="checkbox"/> SERVICE <input type="checkbox"/> SALES	CONTRACTOR <i>Pickrell Drlg. Co.</i>	RIG NAME/NO.	SHIPPED VIA <i>CT</i>	DELIVERED TO <i>Location</i>	ORDER NO.	
3.	WELL TYPE	WELL CATEGORY <i>Development</i>	JOB PURPOSE <i>Cmt. Production Csg.</i>	WELL PERMIT NO.	WELL LOCATION <i>Sec 34 29<sup>s</sup> 19<sup>w</sup></i>		
4. REFERRAL LOCATION	INVOICE INSTRUCTIONS						

PRICE REFERENCE	SECONDARY REFERENCE/ PART NUMBER	ACCOUNTING			DESCRIPTION	QTY.	U/M	QTY.	U/M	UNIT PRICE	AMOUNT
		LOC	ACCT	DF							
575		1			MILEAGE #104	45	mil			2.00	90.00
578		1			Pump Service	5225	ft.			1.200	1,200.00
407		1			Insert Float Shoe w/ Auto. Fill	1	ea		\$ 1/2 in	1.80	1.80
402		1			Centralizers	5	ea		4 1/2 in	30.00	150.00
406		1			Latch Down Plug & Baffle	1	ea		4 1/2 in	190.00	190.00
221		1			Liquid KCL For 20 <sup>651</sup> Flush	2	gal			19.00	38.00
281		1			Mud Flush	500	gal			0.50	250.00
327		1			50/50 Poz mix	25	skt			4.60	115.00
325		1			Standard Cement <i>SMITH URUCH-2</i>	100	skt			6.75	675.00
284		1			Cal Seal <i>OPS IDC</i>	5	skt			8.00	40.00
277		1			Gilsonite <i>Cement Long String</i>	500	lbs.			0.25	125.00

RECEIVED  
STATE OF KANSAS  
JUL 23 1999

See Page #2

**LEGAL TERMS:** Customer hereby acknowledges and agrees to the terms and conditions on the reverse side hereof which include, but are not limited to, PAYMENT, RELEASE, INDEMNITY, and LIMITED WARRANTY provisions.

MUST BE SIGNED BY CUSTOMER OR CUSTOMER'S AGENT PRIOR TO START OF WORK OR DELIVERY OF GOODS

X *Mike Kern*  
 DATE SIGNED TIME SIGNED  A.M.  P.M.

REMIT PAYMENT TO:  
 SWIFT SERVICES, INC.  
 P.O. BOX 466  
 NESS CITY, KS 67560  
 785-798-2300

SURVEY	AGREE	UN-DECIDED	DIS-AGREE	2 PAGE TOTAL	AMOUNT
OUR EQUIPMENT PERFORMED WITHOUT BREAKDOWN?				4,817	93
WE UNDERSTOOD AND MET YOUR NEEDS?				1070	
OUR SERVICE WAS PERFORMED WITHOUT DELAY?				Discount	4336.14
WE OPERATED THE EQUIPMENT AND PERFORMED JOB CALCULATIONS SATISFACTORILY?				TAX	201.42
ARE YOU SATISFIED WITH OUR SERVICE? <input type="checkbox"/> YES <input type="checkbox"/> NO				TOTAL	24537.56
<input type="checkbox"/> CUSTOMER DID NOT WISH TO RESPOND					

**CUSTOMER ACCEPTANCE OF MATERIALS AND SERVICES** The customer hereby acknowledges receipt of the materials and services listed on this ticket.

SWIFT OPERATOR: *Roy B. Spletter* APPROVAL:

Thank You!



**JOB LOG**

**SWIFT Services, Inc.**

**ORIGINAL**  
 DATE: 3-19-99 PAGE NO. 1

CUSTOMER: Oil Producers      WELL NO.: #2      LEASE: Smith Urah      JOB TYPE: Long String      TICKET NO.: 1199

CHART NO.	TIME	RATE (BPM)	VOLUME (BBL) (GAL)	PUMPS		PRESSURE (PSI)		DESCRIPTION OF OPERATION AND MATERIALS
				T	C	TUBING	CASING	
	12:00							On loc. set up truck
	13:20							Rig getting ready to run 4 1/2" csg. Start in hole with csg. Insert Float shoe & latch down ball on 1st Joint
	0350							Centralizers on #2, #4, #6, #8, #10 collars
	0405							Drop Ball
	0430	4	20					Csg. on Bottom circulate Pump 30-51 2% K2 water
		4	12					Pump 500 gal Mud Flush
	0440							Plug Red hole
								15 sks 50/50 poz
	0445		24					Pump 10 sks 50/50 poz scavenger cut. Pump 100 sks EA-2 cut
								Finished mixing wash out pump & line
		6						Release Latch down Plug Disc 6 BPM
	0515		33					Plug down 1400 psi holding Release Press
								Flood held wash & lock up truck
								Job Complete

*Handwritten signature:* Frank [unclear]  
 [unclear]

OIL PRODUCERS INC. OF KS.  
INITIAL COMPLETION REPORT

WELL - #2 SMITH UNRUH

LEGAL - NE/NW/NW OF 34-29s-19w IN KIOWA CO. KS.

API# - 15-097-21,437

G.L. - 2332'

K.B. - 5' ABOVE G.L. @ 2337'

SURFACE CSN - 8 5/8" @ 605' WITH 330 SX.

RTD - 5225'

LTD - 5227' (ELI 3/18/99)

PRODUCTION CSN - 4 1/2", 10.5# @ 5224' WITH 100 SX EA-2

PBTD - 5175' (ELI 3/31/99), 5196' (BY TBG TALLY 4/12/99)

TOP OF CEMENT - 4670' WITH GOOD CEMENT BONDING.

PERFORATIONS - MISSISSIPPI DOLOMITE-----5108'-5122' 3 SHOTS/FT.

ACID #1 - 1500 GALS 15% DSFE @ 5 BPM - 200 psi.

ACID #2 - 2500 GALS 15% SGA ACID @ 5 BPM - 100 psi

TUBING RAN - 15' MUD ANCHOR, S.N., 164 JTS. 2 3/8" (5163.08')

TUBING SET@ - 5181.18'

AVERAGE TBG JT. - 31.48'

PUMP RAN - NONE

RODS RAN - NONE

S.N. SET@ - 5166.18'

PUMPING UNIT - NONE

ENGINE - NONE

SURFACE EQUIPMENT -

4' X 20' HEATER TREATER  
30" X 6' VERTICAL 500# SEPARATOR WITH MANUAL DUMP  
2 - 12' X 20' 400 BBL STEEL STOCK TANKS.  
12' X 10' 200 BBL FIBERGLASS WATER TANK.

RECEIVED  
STATE CORPORATION COMMISSION

JUL 23 1999

CONSERVATION DIVISION  
Wichita Kansas



3/31/99

ELI WIRELINE ON LOCATION TO RUN GAMMA RAY, CORRELATION, & SONIC CEMENT BOND LOG.  
FOUND TTL DEPTH - 5175' (THIS IS 22' HIGH TO TOP OF INSERT @ 5197')  
FOUND TOP CEMENT - 4670' WITH GOOD CEMENT BONDING.

4/6/99

COMANCHE WELL SERVICE ON LOCATION, RIGGED UP D-D DERRICK.  
 SWAB 4 1/2" CASING DOWN TO 4500' FROM SURFACE.  
 SHUT DOWN FOR THE NIGHT.

4/7/99

ELI WIRELINE ON LOCATION TO PERFORATE PROPOSED INTERVAL IN MISSISSIPPI DOLOMITE.  
PERFORATED MISS DOLO - 5108'-5122' WITH 3 SHOTS/FT. USING EXPENDABLE CASING GUN.  
FOUND TTL DEPTH - 5176'

COMANCHE SWABBED WELL DOWN TO TTL DEPTH.  
1/2 HR. NATURAL SWAB TEST - RECOVERED 20' FLUID, 13% OIL, STRONG GAS BLOW.

ACID SERVICES ON LOCATION TO ACIDIZE MISS DOLO PERFS 5108'-5122' WITH 1500 GALS 15% DSFE ACID.

ACIDIZE MISS DOLO PERFS AS FOLLOWS:

PUMP 1500 GALS 15% DSFE ACID.  
 LOAD HOLE WITH 45 BBLs FIELD BRINE:  
 PRESSURED TO 500 psi, START FEEDING @ 3/4 BPM - 150 psi.  
 DISPLACED 1500 GALS ACID @ 5 BPM - 500 psi TO 200 psi.  
ISIP - VAC, TOTAL LOAD - 116 BBLs.

COMANCHE RIGGED TO SWAB BACK ACID LOAD AND TEST MISS PERFS 5108'-22' AFTER ACID.

TEST MISS PERFS AFTER ACID AS FOLLOWS:

FOUND FLUID LEVEL @ 900' FROM SURFACE.  
 SWABBED 75 BBLs, WELL KICKED OFF FLOWING.  
1 HR. FLOW TEST - RECOVERED 20.04 BBLs, 37% OIL, TEST GAS VOLUME @ 773 MCFPD.  
1 HR. FLOW TEST - RECOVERED 8.35 BBLs, 70% OIL, TEST GAS VOLUME @ 840 MCFPD.  
1 HR. FLOW TEST - RECOVERED 6.68 BBLs, 100% OIL, TEST GAS VOLUME @ 951 MCFPD.  
1 HR. FLOW TEST - RECOVERED 8.35 BBLs, 100% OIL, TEST GAS VOLUME @ 951 MCFPD.  
1 HR. FLOW TEST - RECOVERED 6.68 BBLs, 100% OIL, TEST GAS VOLUME @ 1043 MCFPD.  
 SHUT DOWN FOR THE NIGHT.

4/8/99

SICP - 1100 psi,  
SBHP - CALCULATES 1287 psi (THIS IS PESSIMISTIC FIGURING NO FLUID FILL-UP)  
 RIG IS SHUT DOWN TODAY WAITING ON TUBING.

RECEIVED  
 STATE CORPORATION COMMISSION

4/12/99

SICP - 1150 psi,  
SBHP - CALCULATES 1338 psi (THIS IS PESSIMISTIC FIGURING NO FLUID FILL-UP)  
 COMANCHE BLEW WELL DOWN, WELL STARTED FLOWING.

JUL 23 1999  
 CONSERVATION DIVISION  
 Wichita Kansas

ACID SERVICES ON LOCATION TO RE-ACIDIZE MISS PERFS 5108'-22' WITH 2500 GALS 15% SGA ACID

4/12/CONT.RE-ACIDIZE MISS PERFS AS FOLLOWS:

PUMP 2500 GALS 15% SGA ACID.  
 LOAD HOLE WITH 21 BBLs FIELD BRINE.  
 DISPLACE ACID @ 5 BPM - 150 psi TO 100 psi.  
 ISIP - VAC, TOTAL LOAD - 140 BBLs.

COMANCHE RIGGED TO RUN 2 3/8" USED TESTED AND DRIFTED HUB CITY MACHINED TUBING  
 PURCHASED FROM A&W SUPPLY.

RAN PRODUCTION TUBING AS FOLLOWS:

MUD ANCHOR X 2 3/8"	15.00'
SEATING NIPPLE X 2 3/8"	1.10'
164 JTS. 2 3/8" TUBING	5163.08'
K.B. (5' < 3' ABOVE G.L.)	2.00'
<u>TUBING SET @</u>	5181.18'
SEATING NIPPLE SET @	5166.18'

TAGGED TOTAL DEPTH @ 5196' (BY TUBING TALLY), PICKED UP & SET TUBING 15' OFF BOTTOM.

COMANCHE RIGGED TO SWAB BACK ACID LOAD VIA TUBING SWAB.

TEST MISS PERFS AFTER RE-ACID AS FOLLOWS:

FOUND FLUID LEVEL @ 1800' FROM SURFACE. (SBHP CALCULATES 1432')  
 SWAB 6 HRS. RECOVERED 98.53 BBLs, CASING PRESSURE - 740#, WELL KICKED OFF FLOWING.  
1 HR. FLOW - RECOVERED 26.72 BBLs, 60% OIL, TEST GAS @ 750 MCFPD, CSG PRESSURE - 350#  
1 HR. FLOW - RECOVERED 6.68 BBLs, 60% OIL, TEST GAS @ 750 MCFPD, CSG PRESSURE - 350#  
1 HR. FLOW - RECOVERED 6.68 BBLs, 60% OIL, TEST GAS @ 900 MCFPD, CSG PRESSURE - 350#  
1 HR. FLOW - RECOVERED 3.34 BBLs, 60% OIL, TEST GAS @ 1040 MCFPD, CSG PRESSURE - 350#  
 SHUT DOWN FOR THE NIGHT.

4/13/99

SITP - 940 psi, SICP - 1090 psi  
 BLEW WELL DOWN, WELL KICKED OFF FLOWING.

CONT. TESTING MISS PERFS AS FOLLOWS:

1 HR. FLOW - RECOVERED 3.34 BBLs, 100% OIL, TEST GAS @ 1500 MCFPD, CSG PRESSURE - 700#  
1 HR. FLOW - RECOVERED 3.34 BBLs, 100% OIL, TEST GAS @ 1700 MCFPD, CSG PRESSURE - 475#  
1 HR. FLOW - RECOVERED 3.34 BBLs, 70% OIL, TEST GAS @ 1300 MCFPD, CSG PRESSURE - 420#

RIG UP BACK PRESSURE VALVE ON TUBING TO SIMULATE LINE PRESSURE @ 250 psi. TO  
 EVALUATE WELL CAPABILITIES TO FLOW UNDER LINE PRESSURE CONDITIONS.

FLOW TEST MISS WITH 250# BACK PRESSURE AS FOLLOWS:

1 HR. FLOW - RECOVERED 3.34 BBLs, 90% OIL, TEST GAS @ 950 MCFPD, CSG PRESSURE - 500#  
1 HR. FLOW - RECOVERED 3.34 BBLs, 80% OIL, TEST GAS @ 1050 MCFPD, CSG PRESSURE - 560#  
1 HR. FLOW - RECOVERED 3.34 BBLs, 80% OIL, TEST GAS @ 1050 MCFPD, CSG PRESSURE - 560#  
 SHUT WELL IN.

COMANCHE RIGGED DOWN AND MOVED OFF LOCATION.

WE WILL PUT THIS WELL ON WITHOUT RUNNING PUMP AND RODS, IF WELL LOADS UP WE WILL  
 RUN PUMP AT LATER DATE.

4/9/99

SIOUX DELIVERED APPROX 1800' 2 3/8" TUBING TO LOCATION FOR LEAD LINE.  
 STRING LEAD LINE ON TOP OF GROUND.  
 MURRAY CASING CREW ON LOCATION TO ASSIST SCREWING LINE TOGETHER.

RECEIVED  
 STATE CORPORATION COMMISSION

JUL 23 1999

CONSERVATION DIVISION  
 Wichita Kansas

ORIGINAL

4/9 CONT.

LAID 1800' 2 3/8" LEAD LINE FROM #2 WELL TO #1 WELL.  
ENSLEE DOZER ON LOCATION AND EXTENDED TANK BATTERY GRADE @ #1 WELL TO THE  
NORTH.

4/12/99

SIOUX TANK ON LOCATION, DELIVERED GAS SEPARATOR AND HEATER TREATER.  
SET 30" X 6' VERTICAL GAS SEPARATOR, 500# W.P., WITH MANUAL DUMP. PURCHASED FROM  
STREMMEL.  
SET 4' X 20' HEATER TREATER FROM OPIK JONES LEASE.

NOTE: WILL SET STOCK TANKS FROM OPIK EDMISTON LEASE, HOOK UP WELL HEAD AND BURY  
LEAD LINE AS SOON AS LOCATION DRIES UP FROM RAIN. WELL WILL BE PUT ON LINE AT  
THAT POINT.

IT APPEARS AT THIS POINT THAT WE HAVE A NICE COMMERCIAL GAS AND OIL PRODUCER.

END OF REPORT



BRAD SIROKY

RECEIVED  
STATE CORPORATION COMMISSION

JUL 23 1999

CONSERVATION DIVISION  
Wichita, Kansas

# Superior Testers Enterprises, Inc. ORIGINAL

R.R. 3, Box 295B, Great Bend, Kansas 67530

(316) 792-6902

Date 3-17-1999 Location N.E. 1/4 - N.W. 1/4 34-27-19<sup>W</sup> Elevation 23326.1 County kiowa  
 Company OIL PRODUCERS INC. of KANSAS Number of Copies 5  
 Charts Mailed to P.O. Box 8647 Wichita Kansas 67208  
 Drilling Contractor PICKRILL Drilling Rig # 1  
 Length Drill Pipe 4857 I.D. Drill Pipe 3.80 Tool Joint Size 4 1/2" X.H.  
 Length Weight Pipe NONE I.D. Weight Pipe NONE Tool Joint Size NONE  
 Length Drill Collars 210 I.D. Drill Collars 2.25 Tool Joint Size 4 1/2" X.H.  
 Top Packer Depth 5081 Bottom Packer Depth 5086 Number of Packers 2 Packer Size 6 3/4"  
 TESTED FROM 5086 TO 5150 ANCHOR LENGTH 64 TOTAL DEPTH 5150 Hole Size 7 7/8"  
 LEASE & WELL NO. Smith-Urrah #2 FORMATION TESTED Mississippi TEST NO. 1  
 Mud Weight 9.3 Viscosity 53 Water Loss 40\* Chlorides - Pits 32000 D.S.T. 58000  
 Maximum Temp. 123 °F Initial Hydrostatic Pressure (A) 2677 P.S.I. Final Hydrostatic Pressure (H) 2496 P.S.I.

Tool Open I.F.P. from 6:00 Pm to 6:30 Pm 30 min  
 Tool Closed I.C.I.P. from 6:30 Pm to 7:00 Pm 30 min  
 Tool Open F.F.P. from 7:00 Pm to 8:00 Pm 60 min  
 Tool Closed F.C.I.P. from 8:00 Pm to 9:00 Pm 60 min  
 Initial Blow Fair blow built to strong blow with Gas to Surface in 15 minutes  
 Final Blow Strong blow - SEE Gas Flow Report

from [B] 301 P.S.I. to [C] 185 P.S.I.  
 [D] 1252 P.S.I.  
 from [E] 185 P.S.I. to [F] 214 P.S.I.  
 [G] 1318 P.S.I.

Total Feet Recovered	Gravity of Oil	Corrected
<u>100</u> Feet of <u>Drilling mud Gassy</u>	% Gas <u>1</u> % Oil <u>28</u> % Mud <u>32</u> % Water <u>32</u>	
<u>60</u> Feet of <u>Oil &amp; Gas cut muddy water</u>	% Gas <u>15</u> % Oil <u>25</u> % Mud <u>32</u> % Water <u>32</u>	
<u>60</u> Feet of <u><del>Gassy mud</del> <sup>muddy</sup> Oil &amp; Gas cut water</u>	% Gas <u>23</u> % Oil <u>35</u> % Mud <u>10</u> % Water <u>32</u>	
<u>120</u> Feet of <u>mud cut Gassy Oil with water</u>	% Gas <u>28</u> % Oil <u>52</u> % Mud <u>2</u> % Water <u>18</u>	
<u>120</u> Feet of <u>Slightly Gas cut Oil</u>	% Gas <u>10</u> % Oil <u>80</u> % Mud <u>2</u> % Water <u>8</u>	
<u>60</u> Feet of <u>Slightly Oil cut water</u>	% Gas <u>0</u> % Oil <u>100</u> % Mud <u>2</u> % Water <u>80</u>	
Feet of _____	% Gas _____ % Oil _____ % Mud _____ % Water _____	
Feet of _____	% Gas _____ % Oil _____ % Mud _____ % Water _____	
Feet of _____	% Gas _____ % Oil _____ % Mud _____ % Water _____	

Remarks \_\_\_\_\_

Extra Equipment - Jars NONE Safety Joint NONE Extra Packer NONE Straddle NONE Hook Wall NONE  
 Top Recorder No. 13189 Clock No. 47441 Depth 5144 Cir. Sub NONE Sampler NONE  
 Bottom Recorder No. 5463 Clock No. 47442 Depth 5147 Insurance NONE

Price of Job \_\_\_\_\_  
 Tool Operator Gene Budig  
 Approved By \_\_\_\_\_

Superior Testers Enterprises, Inc. shall not be liable for damage of any kind to the property or personnel of the one for whom a test is made, or for any loss suffered or sustained, directly or indirectly, through the use of its equipment, or its statements or opinion concerning the results of any test. Tools lost or damaged in the hole shall be paid for at cost by the party for whom the test is made.

No 11009

# Superior Testers Enterprises, Inc.

R.R. 3, Box 295B, Great Bend, Kansas 67530

(316) 792-6902

## GAS FLOW REPORT

Date 3-17-1999 Ticket # 11009 Company Oil Producers Inc. of Kansas  
 Well Name and No. Smith-Davey #2 DST No. 1 Interval Tested 5086-5150  
 County Nowa State KANSAS Sec. 34 Twp. 29<sup>s</sup> Rg. 19<sup>w</sup>

Time Gauge Pre-Flow	Time Gauge in Min.	Inches of Water on Orifice Well Tester	Inches of Mercury on Orifice Well Tester	P.S.I. on Orifice Well Tester	P.S.I. on Pilot Tester	Choke Size	Gas Rate MCF
<b>PRE FLOW</b>							
Tool OPENED AT 6:00 with Gas to Surface AT 6:15							
6:15	15	8				1	73.1
6:20	20	6				1	63.3
6:30	30	6				1	63.3

SECOND FLOW							
7:00	Tool	OPENED					
7:10	10	24					126.
7:20	20	10					81.6
7:30	30	11					85.9
7:40	40	12					89.8
7:50	50	13					93.8
8:00	60						

### GAS BOTTLE

Serial No. \_\_\_\_\_ Date Bottle Filled \_\_\_\_\_ Date to be Invoiced \_\_\_\_\_ Test Ticket # \_\_\_\_\_

Requisition and Provisions for high pressure steel gas bottles. Superior Testers Enterprises, Inc. shall not be liable for damage of any kind to property or personnel of the one whom gas bottle is filled or for any loss suffered or sustained directly or indirectly through the use of these bottles. By signing of this ticket showing receipt of a gas testing bottle, the undersigned agrees for himself and as agent for operator, to return this bottle to Superior Testers Enterprises, Inc. within thirty (30) days free of charge or be invoiced in the amount of \$125.00 (total charge). Should valve or seal plug be missing or damaged beyond repair, operator shall be invoiced for repairs at our invoiced price.

All charges subject to 1½% per month, equal to 18% interest per annum after 30 days from date of invoice. Any expense incurred for collection will be added to the original amount.

COMPANY'S NAME \_\_\_\_\_

Authorized by \_\_\_\_\_

**SUPERIOR TESTERS ENTERPRISES INC.**

Great Bend, Kansas

**CHART DATA**

(316) 792-6902

**SMITH-UNRUH #2 MISSISSIPPI**

State ..... KANSAS

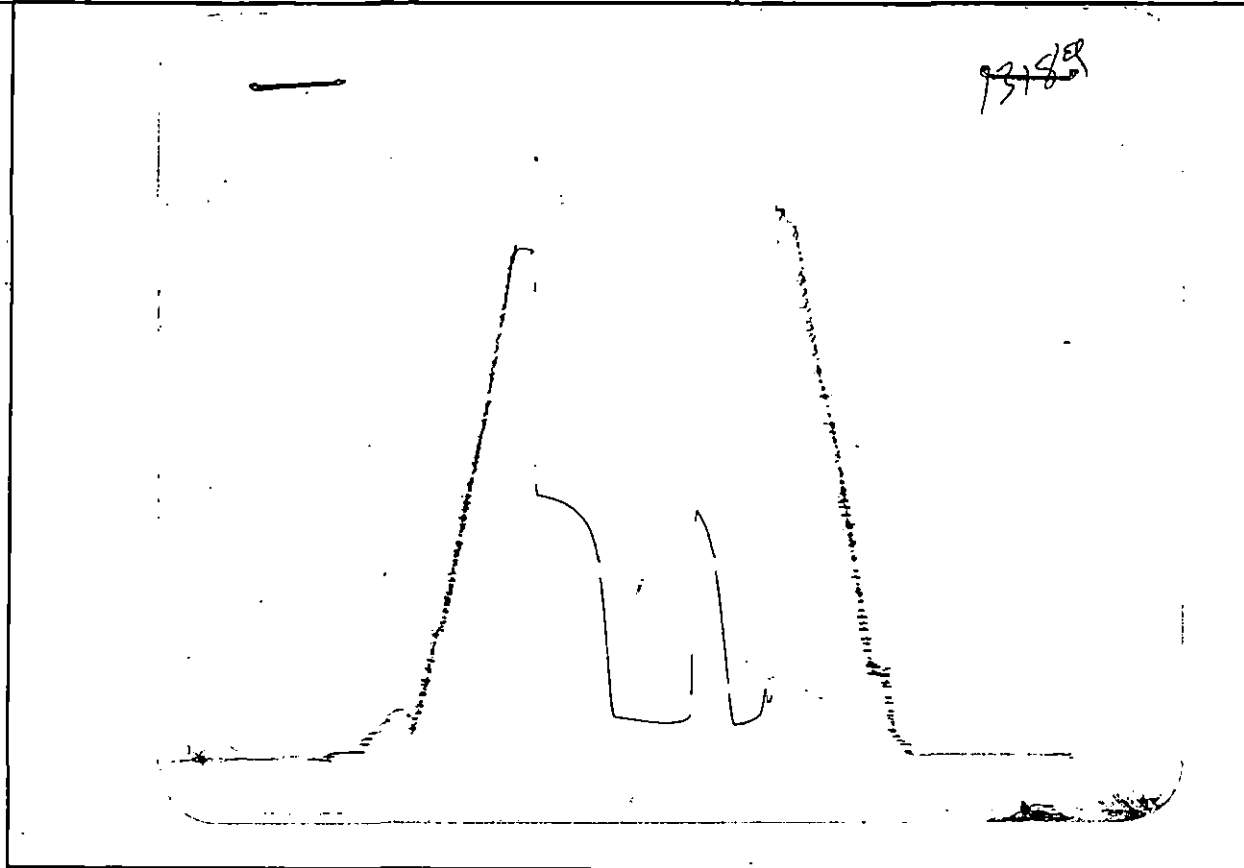
Test Date ..... March 17, 1999

County ..... IOWA

Sec Town Range ..... N/E-N/W-N/W 34-29S-19W

Field .....

Report Number ..... 11009



**Field Reading**

**Office Reading**

		Field Reading	Office Reading	
(A)	Initial Hydrostatic Pressure	2677	2657	psi
(B)	Initial Flow Pressure	301	296	psi
(C)	Final Initial Flow Pressure	185	191	psi
(D)	Initial Shut-In Pressure	1252	1246	psi
(E)	Initial Final Flow Pressure	185	199	psi
(F)	Final Flow Pressure	214	222	psi
(G)	Final Shut-In Pressure	1318	1314	psi
(H)	Final Hydrostatic Pressure	2496	2500	psi

ELECTRONIC REECORDER DEPTHft,RECORDER NUMBER78225

Company: OIL PRODUCERS INC. OF KANSAS Lease & Well No. SMITH-UNRUH #2 Test #: 1 Date: 3-17-1999 SEC. 34 TWP. 29S RGE. 19W

# SUPERIOR TESTERS ENTERPRISES INC.

## DRILL STEM TEST REPORT

GREAT BEND, KANSAS (316)792-6902

### General Information

Test Company Name ..... SUPERIOR TESTERS ENTERPRISES INC.  
Company Name ..... OIL PRODUCERS  
Lease and Well Number ..... SMITH-UNRUH #2  
Formation Tested ..... MISSISSIPPI  
Test Number ..... 1  
State ..... KANSAS  
County ..... KIOWA  
Field .....  
Test Date ..... 17-Mar-99  
Section Town Range ..... N/E-N/W-N/W 34-29S-19W  
Report Number ..... 11009  
Elevation Ground Level ..... 2332  
Elevation Kelly Bushings ..... 2337  
Company Representative ..... BILL SHEPHERD  
Testing Engineer ..... GENE BUDIG

### Extra Equipment

Jars ..... NO  
Safety Joint ..... NO  
Extra Packers ..... No  
Straddle ..... No  
Hook Wall ..... No  
Sampler ..... No  
Circulating Sub ..... No  
Electronic Recorder ..... NO

### Well Information

Drilling Contractor ..... PICKRILL DRILLING RIG #1  
  
Drill Pipe Length ..... 4857  
Drill Pipe I.D. .... 3.8  
Tool Joint Size ..... 4 1/2 XH  
  
Weight Pipe Length .....  
Weight Pipe I.D. .... 2.76  
Tool Joint Size ..... 4 1/2 X.H.  
  
Drill Collar Length ..... 210  
Drill Collar I.D. .... 2.25  
Tool Joint Size ..... 4 1/2 X.H.  
  
Mud Weight #/gal ..... 9.30  
Viscosity ..... 53.00  
Water Loss ..... 40+  
Chlorides - Pits ..... 32,000  
Chlorides - DST ..... 58,000

# SUPERIOR TESTERS ENTERPRISES INC.

## DRILL STEM TEST REPORT

GREAT BEND, KANSAS (316)792-6902

### Tool Setting Information

Top Packer Depth ..... 5081  
 Bottom packer Depth ..... 5086  
 Number of Packers ..... 2  
 Packer Size ..... 6 3/4  
  
 Test Interval (from ) ..... 5086  
 Test Interval (to) ..... 5150.00  
 Anchor Length ..... 64  
 Total Depth (ft) ..... 5150  
 Hole Size (in) ..... 7 7/8

### Pressure Readings

	<i>Field Reading</i>	<i>Office Reading</i>
Maximum Temp .....	123	
Initial Hydrostatic Pressure .....	2677	2657
Initial Flow Pressure .....	301	296
Final Initial Flow Pressure .....	185	191
Initial Shut-In Pressure .....	1252	1246
Initial Final Flow Pressure .....	185	199
Final Flow Pressure .....	214	222
Final Shut-In Pressure .....	1318	1314
Final Hydrostatic Pressure .....	2496	2500
Electronic Recorder Depth .....		
Recorder Number .....	78225	
Mechanical Recorder Depth .....	5144	
Recorder Number .....	13189	

### Comments



# SUPERIOR TESTERS ENTERPRISES INC.

## DRILL STEM TEST REPORT

GREAT BEND, KANSAS (316)792-6902

### Flow Times

*Initial Open*

Tool Open (from) ..... 6:00  
 Tool Open (to) ..... 6:30  
 Duration (min) ..... 30

*Initial Shut-in*

Tool Closed (from) ..... 6:30  
 Tool Closed (to) ..... 7:00  
 Duration (min) ..... 30

*Final Open*

Tool Open (from) ..... 7:00  
 Tool Open (to) ..... 8:00  
 Duration (min) ..... 60

*Final Shut-in*

Tool Closed (from) ..... 8:00  
 Tool Closed (to) ..... 9:00  
 Duration (min) ..... 60

### Recovery Description

Initial Blow ..... FAIR BLOW BUILT TO A STRONG BLOW WITH GAS TO SURFACE IN 15 MINUTES

Final Blow ..... STRONG BLOW-SEE GAS FLOW REPORT

<i>Description</i>	<i>Feet of Recovery</i>	<i>% Gas</i>	<i>%Oil</i>	<i>%Mud</i>	<i>% Water</i>
1 ) GASSY MUD	100			100	
2 ) OIL AND GAS CUT MUDDY WATER	60	15	25	28	32
3 ) OIL AND GAS CUT MUDDY WATER	60	23	35	10	32
4 ) SLIGHTLY WATER CUT GASSY OIL	120	28	52	2	18
5 ) SLIGHTLY WATER CUT GASSY OIL	120	10	80	2	8
6 ) SLIGHTLY OIL CUT WATER	60	0	10	2	88
7 )					
8 )					
9 )					
10)					
11)					
12)					
13)					
14)					
15)					
520					