

TYPE

NOTICE OF INTENTION TO DRILL

C-1
MI-1221

**TO BE FILED WITH THE STATE CORPORATION COMMISSION
PRIOR TO COMMENCEMENT OF WELL**

API Number 15-151-20,742
(For office use only) 00-00

1. Operator BIG "J" PROD. CO. & QUADEL ENERGY CORP.

Starting Date April 2, 1980

Address 729 E. Central, P.O. Box 11245
Wichita, KS. 67211

County Pratt

2. Contractor Merckle Drilling

Sec 1 Twp 26 S Rge 15 **W**

Address Great Bend, KS.

Spot Location SE/4 NE/4 SW/4

3. Type of Equipment: Rotary Cable Tool

Nearest Lease Line 330 ft.

4. Well to be Drilled for: Oil Gas

Lease Name Beck

Disposal Input Other

5. Depth of Deepest Fresh Water within 1 mile 125 ft.

6. Depth of Municipal Water Well within 3 miles none ft.

Well No. # 1

7. Depth to Protect all Fresh Water 450 ~~300~~ ft.

8. Amount of Surface Casing to be set 300 ft.

Est. Total Depth 4500 ft.

9. Alternate No. 1 No. 2

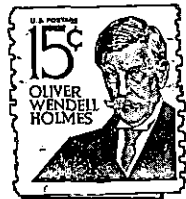
REMARKS:

OPERATOR STATES THAT HE WILL COMPLY WITH K. S. A. 55-128

Signature of Operator

J. E. JESPERSEN





State Corporation Commission of Kansas
Conservation Division
245 North Water
Wichita, Kansas 67202

RECEIVED
 MAR 18 1980
 WICHITA, KANSAS

CONSERVATION DIVISION
 Wichita, Kansas

(IF PREFERRED, MAIL IN ENVELOPE)