

STATE OF KANSAS  
STATE CORPORATION COMMISSION

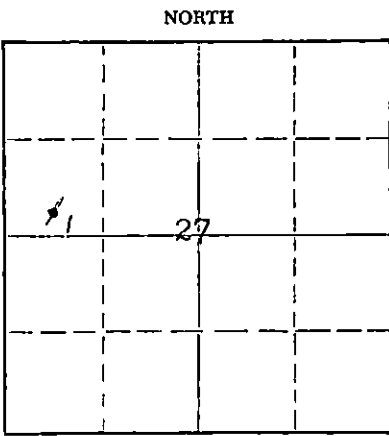
Form CP-4

WELL PLUGGING RECORD

Give All Information Completely  
Make Required Affidavit  
Mail or Deliver Report to:  
Conservation Division  
State Corporation Commission  
212 No. Market  
Wichita, Kansas

Stafford County, Sec. 27 Twp. 25S Rge. (E) 14 (W)

Location as "NE/CNW/SW" or footage from lines C S/2 SW/4 NW/4  
Lease Owner Skelly Oil Company  
Lease Name I. M. Toland Well No. 1  
Office Address 1860 Lincoln St., Denver, Colo.  
Character of Well (completed as Oil, Gas or Dry Hole) Oil  
Date well completed June 1, 19 59  
Application for plugging filed April 11, 19 67  
Application for plugging approved April 14, 19 67  
Plugging commenced June 23, 19 67  
Plugging completed June 27, 19 67  
Reason for abandonment of well or producing formation Depleted



Locate well correctly on above Section Plat

If a producing well is abandoned, date of last production May 31, 19 67  
Was permission obtained from the Conservation Division or its agents before plugging was commenced? Yes

Name of Conservation Agent who supervised plugging of this well Mr. A. Elving PB  
Producing formation Lansing Lime Depth to top 3702 Bottom Total Depth of Well 3890 Feet  
Show depth and thickness of all water, oil and gas formations.

OIL, GAS OR WATER RECORDS

CASING RECORD

| FORMATION    | CONTENT | FROM  | TO    | SIZE   | PUT IN  | PULLED OUT |
|--------------|---------|-------|-------|--------|---------|------------|
| Lansing Lime | Oil     | 3844' | 3853' | 5-1/2" | 3947'3" | 2218'      |
|              |         |       |       | 8-5/8" | 861'0"  | None       |
|              |         |       |       |        |         |            |
|              |         |       |       |        |         |            |
|              |         |       |       |        |         |            |
|              |         |       |       |        |         |            |
|              |         |       |       |        |         |            |

Describe in detail the manner in which the well was plugged, indicating where the mud fluid was placed and the method or methods used in introducing it into the hole. If cement or other plugs were used, state the character of same and depth placed, from feet to feet for each plug set.

|                    |                       |
|--------------------|-----------------------|
| Sand               | 3890' to 3800'        |
| 20 sacks of cement | 3800' to 3660'        |
| Sand               | 3660' to 3550'        |
| 5 sacks of cement  | 3550' to 3510'        |
| Mud                | 3510' to 290'         |
| Rock bridge        | 290' to 280'          |
| 25 sacks of cement | 280' to 205'          |
| Mud                | 205' to 40'           |
| Rock bridge        | 40' to 30'            |
| 10 sacks of cement | 30' to Base of cellar |
| Surface soil       | Cellar to Surface     |

RECEIVED  
AUG 20 1967

(If additional description is necessary, use BACK of this sheet)  
Name of Plugging Contractor Ralph Comstock Pipe Pugging, Inc.  
Address 320 North Park, Stafford, Kansas 67578

STATE OF Colorado, COUNTY OF Denver, ss.  
Leland Franz (employee of owner) or (owner) of the above-described

well, being first duly sworn on oath, says: That I have knowledge of the facts, statements, and matters herein contained and the log of the above-described well as filed and that the same are true and correct. So help me God.

(Signature) Leland Franz  
1860 Lincoln Street, Denver, Colo.

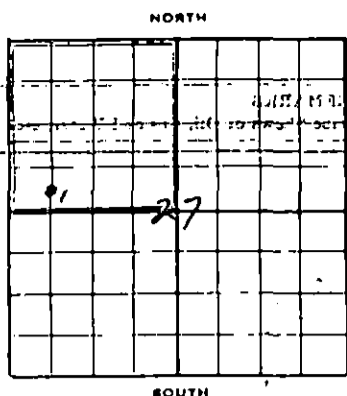
(Address) 80203

SUBSCRIBED AND SWORN TO before me this 24th day of August, 19 67

My commission expires June 17, 1970

Mary E. ...  
Notary Public.

# SKELLY OIL COMPANY



Well Record  
 1989°DF  
 1986°DF  
 1984°DF

Lease Name and No. **I. H. Toland** Well No. **1** Elev. **1984°DF**

Lease Description **FW/4 of Section 27-25S-14W, Stafford County, Kansas (160 Acres)**

Location made **April 30, 1959** by **T. L. Dix**

feet from North line **330** feet from East line **56 1/4**  
 feet from South line **660** feet from West line of **Sec. 27**

Work com'd. **5/4** 19 **59** Rig com'p'd **5/5** 19 **59** Drlg. com'd. **5/5** 19 **59** Drlg. com'p'd **5/17** 19 **59**

Rig Contractor **Chas. Hulme Drlg. Contr.**

Drilling Contractor **Chas. Hulme Drlg. Contr., Great Bend, Kansas**

Rotary Drilling from **0'** to **3920'** Cable Tool Drilling from **To complete** to

Commenced Producing **June 1, 1959** Initial Prod. before shot or acid **5 gals. oil per hr.** Bbls.

Dry Gas Well Press Initial Prod. after shot or acid **Flow thru 2" lbg 8 hrs. 20/64" choke, 122.64 IC no wtr. Estab. 24 hr 300 potential of 368 bbls. 161 MCF gas** Cu. ft.

Casing Head Gas Pressure Volume Cu. ft.

Braden Head (**8-5/8" x 5 1/2" OD**) Gas Pressure Volume Cu. ft.

Braden Head ( ) Gas Pressure Volume Cu. ft.

PRODUCING FORMATION **Lansing Lime** (Name) Top **3844'** Bottom **3853'** TOTAL DEPTH **3920'**

### CASING RECORD

| OD Size  | Wt.  | Thds. | Where Set | PULLED OUT |      |     | LEFT IN |      |     | KIND      | Cond'n | CEMENTING  |                 | LTH   |
|--|------|-------|-----------|------------|------|-----|---------|------|-----|-----------|--------|------------|-----------------|-------|
|  |      |       |           | Jts.       | Feet | In. | Jts.    | Feet | In. |           |        | Sacks Used | Method Employed |       |
| 8-5/8"   | 22.7 | 3     | 857'      |            |      |     | 2       | 861  | 0   | Armo S    | A      | 450        | Hallib.         | 852'  |
| 5-1/2"   | 14   | 8     | 3920'     |            |      |     | 12      | 396  | 3   | J55 R2 S3 | A      | 150        | Hallib.         | 3917' |
| (8-5/8" casing set 2' below ground and 5 1/2" set at ground level) |      |       |           |            |      |     |         |      |     |           |        |            |                 |       |
| 5 1/2" casing perforations open:                                   |      |       |           |            |      |     |         |      |     |           |        |            |                 |       |
| Above PE TL: 3844'-3853' with 54 holes                             |      |       |           |            |      |     |         |      |     |           |        |            |                 |       |
| Below PE TL: None  |      |       |           |            |      |     |         |      |     |           |        |            |                 |       |

Liner Set at \_\_\_\_\_ Length \_\_\_\_\_ Perforated at \_\_\_\_\_

Liner Set at \_\_\_\_\_ Length \_\_\_\_\_ Perforated at \_\_\_\_\_

Packer Set at \_\_\_\_\_ Size and Kind \_\_\_\_\_

Packer Set at \_\_\_\_\_ Size and Kind \_\_\_\_\_

### SHOT OR ACID TREATMENT RECORD

| Date                                | FIRST                 |      | SECOND                |      | THIRD      |      | FOURTH      |      |
|-------------------------------------|-----------------------|------|-----------------------|------|------------|------|-------------|------|
|                                     | Gals. Shot            | Qts. | Gals. Shot            | Qts. | Gals. Shot | Qts. | Gals. Shot  | Qts. |
| 5/25, 26/59                         | 250                   |      | 2000                  |      |            |      | 161 MCF gas |      |
| Shot Between                        | 3844 Ft. and 3853 Ft. |      | 3844 Ft. and 3853 Ft. |      |            |      |             |      |
| Size of Shell                       | MCA acid              |      | HV acid               |      |            |      |             |      |
| Put in by (Co.)                     | Halliburton           |      | Halliburton           |      |            |      |             |      |
| Length anchor                       |                       |      |                       |      |            |      |             |      |
| Distance below Cas'g                |                       |      |                       |      |            |      |             |      |
| Damage to Casing or Casing Shoulder |                       |      |                       |      |            |      |             |      |

### SIGNIFICANT GEOLOGICAL FORMATIONS

| NAME          | Top   | Bottom | GAS  |    | OIL   |       | REMARKS                  |
|---------------|-------|--------|------|----|-------|-------|--------------------------|
|               |       |        | From | To | From  | To    |                          |
| Topeka Lime   | 3230' |        |      |    |       |       |                          |
| Heobner Shale | 3528' |        |      |    |       |       |                          |
| Lansing Lime  | 3702' |        |      |    | 3844' | 3853' | Prod. thru 2" lbg 8 hrs. |

### CLEANING OUT RECORDS

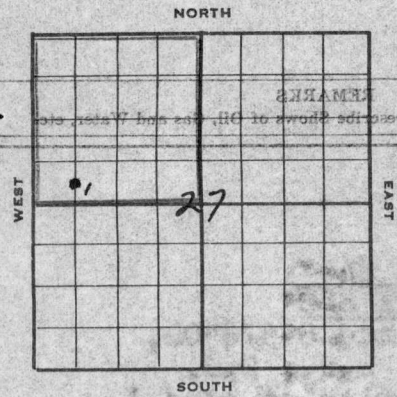
|     | DATE COMMENCED | DATE COMPLETED | PROD. BEFORE | PROD. AFTER | REMARKS                        |
|-----|----------------|----------------|--------------|-------------|--------------------------------|
| 1st |                |                |              |             | See Reverse for other details. |
| 2nd |                |                |              |             | " " " " "                      |
| 3rd |                |                |              |             | " " " " "                      |
| 4th |                |                |              |             | " " " " "                      |

### PLUGGING BACK AND DEEPENING RECORDS

|     | Date Commenced | Date Completed | No. Feet Plugged Back or Deepened | Prod. Before | Prod. After | REMARKS                        |
|-----|----------------|----------------|-----------------------------------|--------------|-------------|--------------------------------|
| 1st |                |                |                                   |              |             | See Reverse for other details. |
| 2nd |                |                |                                   |              |             | " " " " "                      |
| 3rd |                |                |                                   |              |             | " " " " "                      |
| 4th |                |                |                                   |              |             | " " " " "                      |

(See Reverse for Record of Formation)

# SKELLY OIL COMPANY



1989\*DP  
1986\*GR  
1984\*BH

**Well Record**

Lease Name and No. I. M. Toland Well No. 1 Elev. 1984\*BH

Lease Description NW/4 of Section 27-25S-14W,  
Stafford County, Kansas (160 Acres)

Location made April 30, 19 59 by T. L. Bix

feet from North line 330 feet from East line 660  
feet from South line 660 feet from West line 330 of Sec. 27

Work com'd. 5/4 19 59 Rig com'd. 5/5 19 59 Drlg. com'd. 5/5 19 59 Drlg. com'd. 5/27 19 59

Rig Contractor Chas. Hulme Drig. Contr.

Drilling Contractor Chas. Hulme Drig. Contr., Great Bend, Kansas

Rotary Drilling from 0° to 3920° Cable Tool Drilling from To complete to 3920°

Commenced Producing June 1, 19 59 Initial Prod. before shot or acid 5 gals. oil per hr. Bbls.  
Initial Prod. after shot or acid Flow thru 2" thr 8 hrs. Bbls.  
20/64" choke, 122.64 no wtr. Estab. 24 hr  
300 potential of 368 bbls. 161 MCF gas Cu. ft.

Dry Gas Well Press. Volume Cu. ft.

Casing Head Gas Pressure Volume Cu. ft.

Braden Head (8-5/8" 5 1/2" OD) Gas Pressure Volume Cu. ft.

Braden Head ( ) Gas Pressure Volume Cu. ft.

PRODUCING FORMATION Lansing Lime (Name) Top 3844° Bottom 3853° TOTAL DEPTH 3920°

### CASING RECORD

| OD Size   | Wt.  | Thds. | Where Set | PULLED OUT |      |     | LEFT IN |      |     | KIND        | Cond'n | CEMENTING     |                 |
|---|------|-------|-----------|------------|------|-----|---------|------|-----|-------------|--------|---------------|-----------------|
|   |      |       |           | Jts.       | Feet | In. | Jts.    | Feet | In. |             |        | Sacks Used    | Method Employed |
| 8-5/8"  | 22.7 | 33    | 857°      |            |      |     | 22      | 861  | 0   | Armo SW A   | 450    | Hallib. 852°  |                 |
| 5-1/2"  | 14   | 88    | 3920°     |            |      |     | 121     | 3947 | 3   | J55 R2 SS A | 150    | Hallib. 3917° |                 |
| (8-5/8" casing set 2' below ground and 5 1/2" set at ground level)<br>5 1/2" casing perforations open:<br>Above PB TD: 3844°-3853° with 54 holes<br>Below PB TD: None |      |       |           |            |      |     |         |      |     |             |        |               |                 |

Liner Set at \_\_\_\_\_ Length \_\_\_\_\_ Perforated at \_\_\_\_\_

Liner Set at \_\_\_\_\_ Length \_\_\_\_\_ Perforated at \_\_\_\_\_

Packer Set at \_\_\_\_\_ Size and Kind \_\_\_\_\_

Packer Set at \_\_\_\_\_ Size and Kind \_\_\_\_\_

### SHOT OR ACID TREATMENT RECORD

|                                     | FIRST                        | SECOND                       | THIRD              | FOURTH             |
|-------------------------------------|------------------------------|------------------------------|--------------------|--------------------|
| Date                                | <u>5/25, 26/59</u>           | <u>5/26/59</u>               |                    | <u>161 MCF gas</u> |
| Acid Used                           |                              |                              |                    |                    |
| Size Shot                           | <u>250</u>                   | <u>2000</u>                  |                    |                    |
| Shot Between                        | <u>3844 Ft. and 3853 Ft.</u> | <u>3844 Ft. and 3853 Ft.</u> | <u>Ft. and Ft.</u> | <u>Ft. and Ft.</u> |
| Size of Shell                       | <u>MCA acid</u>              | <u>HV acid</u>               |                    |                    |
| Put in by (Co.)                     | <u>Halliburton</u>           | <u>Halliburton</u>           |                    |                    |
| Length anchor                       |                              |                              |                    |                    |
| Distance below Cas'g                |                              |                              |                    |                    |
| Damage to Casing or Casing Shoulder |                              |                              |                    |                    |

### SIGNIFICANT GEOLOGICAL FORMATIONS

| NAME                 | Top          | Bottom | GAS  |    | OIL                |                              | REMARKS |
|----------------------|--------------|--------|------|----|--------------------|------------------------------|---------|
|                      |              |        | From | To | From               | To                           |         |
| <u>Topeka Lime</u>   | <u>3230°</u> |        |      |    |                    |                              |         |
| <u>Heobner Shale</u> | <u>3528°</u> |        |      |    |                    |                              |         |
| <u>Lansing Lime</u>  | <u>3702°</u> |        |      |    | <u>3844° 3853°</u> | <u>Prod. thru org. perf.</u> |         |

### CLEANING OUT RECORDS

|     | DATE COMMENCED | DATE COMPLETED | PROD. BEFORE | PROD. AFTER | REMARKS                        |
|-----|----------------|----------------|--------------|-------------|--------------------------------|
| 1st |                |                |              |             | See Reverse for other details. |
| 2nd |                |                |              |             | " " " " "                      |
| 3rd |                |                |              |             | " " " " "                      |
| 4th |                |                |              |             | " " " " "                      |

### PLUGGING BACK AND DEEPENING RECORDS

|     | Date Commenced | Date Completed | No. Feet Plugged Back or Deepened | Prod. Before | Prod. After | REMARKS                        |
|-----|----------------|----------------|-----------------------------------|--------------|-------------|--------------------------------|
| 1st |                |                |                                   |              |             | See Reverse for other details. |
| 2nd |                |                |                                   |              |             | " " " " "                      |
| 3rd |                |                |                                   |              |             | " " " " "                      |
| 4th |                |                |                                   |              |             | " " " " "                      |

(See Reverse for Record of Formation)

# RECORD OF FORMATIONS

| FORMATION  | TOP       | BOTTOM    | REMARKS   |
|--|-----------|-----------|---|
|  |           |           | Indicate Casing Points, Describe Shows of Oil, Gas and Water, etc.  |
| Surface soil and sand  | 0         | 127       |   |
| Sand   | 127       | 230       |   |
| Red bed  | 230       | 855       |   |
| Anhydrite  | 855       | 860       | <b>TOP ANHYDRITE 846'</b><br><b>BASE ANHYDRITE 860'</b><br>Set and cemented 8-5/8" OD, 22.7#, Araco, S.S., S.J. R-3, steel casing (A cond.) at 857' with 450 sacks of common cement, 2% Gel, 1% calcium chloride. Cement circulated.  |
| Red bed  | 860       | 960       |   |
| Shale and shells   | 960       | 1725      | <b>TOP WELLINGTON 1327'</b><br><b>BASE WELLINGTON 1977'</b>   |
| Shale and lime   | 1725      | 3520      | <b>TOP TARKIO 2913'</b><br><b>NEAR TOPEKA LINE 3146'</b><br><b>TOP TOPEKA LINE 3230'</b><br><b>TOP HELLNER SHALE 3528'</b><br><b>TOP BROWN-LINE 3678'</b><br><b>TOP LANSING LINE 3702'</b>  |
| Line   | 3520      | 3700      |   |
| Shale  | 3700      | 3708      |   |
| Line   | 3708      | 3845      |   |
| Tan, fine to medium crystalline oolitic and oolitic line   | 3845      | 3852      | Fair to good porosity, fair spotted light stain, show of free oil in samples.   |
| Line   | 3852      | 3857      | Ran Halliburton drill stem test No. 1, packer set at 3836', used 21' anchor, open 65 minutes, gas to surface in 4 minutes, gas gauged 139 MCF decreasing to 79 MCF in 30 minutes, recovered 30' of slightly oil and gas cut mud, 70' of heavy oil and gas cut fluffy mud, 50' of slightly muddy oil, IBHP-1095# in 20 minutes, IFF-35%, FFP-74%, FHP-1025# in 20 minutes. |
| Line   | 3857      | 3878      |   |
| Buff, medium fine crystalline, slightly vuggy oolitic line   | 3878      | 3883      | Fair vuggy and inter-oolitic porosity, poor scattered brown stain, no free oil.   |
| Line   | 3883      | 3888      | Ran Halliburton drill stem test No. 2, packer set at 3867', used 21' anchor, open 65 minutes, weak blow for 65 minutes, recovered 1320' of gas in 4 1/2" drill pipe, 30' of slightly gas cut mud, IBHP-825# 20 minutes, IFF-15%, FFP-15%, FHP-470# in 30 mins.  |
| Line   | 3888      | 3920      | Ran Welox Gamma Ray and Neutron Survey.   |
| <b>TOTAL DEPTH 3920'</b>   |           |           | Set and cemented 5 1/2" OD, 14#, RR thd., R-2, J-55, S.S. casing (A cond.) at 3920' with 150 sacks of common cement, 2% Gel. Finished cementing at 4:30 p.m. 5/18/59. Halliburton Temperature Survey showed top of cement behind 5 1/2" casing at 3000'.  |
| <b>Total depth reached: 5/17/59</b>  |           |           |   |
| Rigged up cable tools on May 25, swabbed and bailed the hole dry to top of cement plug at 3890 1/2" SLN, and 5 1/2" casing tested dry. |           |           |   |
| <b>PLUGGED BACK TOTAL DEPTH 3890 1/2'</b>  |           |           |   |
| <b>Casing Perforation No. 1 - Lansing Line - 3844' to 3853'</b><br>3844'-3853' 94 holes  |           |           |   |
| Bailed and tested 2 hours, 5 gallons oil per hour. Treated through 5 1/2" casing with 250 gallons of Halliburton MCA acid as follows:  |           |           |   |
| <b>TREATMENT NO. 1 - Acidized between 3844' and 3853'</b>  |           |           |   |
| Treatment put in 5/25, 26/59 by Halliburton, using 250 gallons of acid and 100 barrels of oil.   |           |           |   |
| <b>TIME</b>  | <b>SP</b> | <b>IP</b> | <b>REMARKS</b>  |
| 11:50 pm   |           |           | Start acid  |
| 12:15 am   | 450#      |           | Acid on bottom  |
| 12:29 am   | 1350#     |           | Treatment completed   |

RECEIVED  
 AUG 28 1967  
 NATIONAL DIVISION  
 Kansas

Swabbed through 5 1/2" casing 3 hours, 88 barrels of oil used in treating and no water. On May 26, swabbed through 5 1/2" casing 2 hours, 12 barrels of oil used in treating and 15 barrels of formation oil. Ran 2" tubing to 3886'. Treated through 2" tubing from 3844' to 3853' with 2000 gallons of Halliburton HV acid as follows:

TREATMENT NO. 2 - Acidized between 3844' and 3853'

Treatment put in 5/26/59 by Halliburton, using 2000 gallons of acid and 103 barrels of oil.

| TIME    | OP   | IP   | REMARKS             |
|---------|------|------|---------------------|
| 2:00 am |      |      | Loaded hole         |
| 2:30 am | 850' | 850' | Acid on bottom      |
| 2:57 am | 0'   | 0'   |                     |
| 3:00 am | 0'   | 0'   | Treatment completed |

Swabbed through 2" tubing 3 hours, 25 barrels of oil used in treating and 24 barrels of acid water. Well started flowing; flowed through 2" tubing 3 hours, 78 barrels of oil used in treating, no water. Then flowed through 2" tubing 6 hours, 99 barrels of formation oil and no water. On May 27, flowed through 2" tubing 3 1/2 hours, 24/64" choke, 33 barrels of oil and no water. Installed tank battery and on May 29, flowed through 2" tubing 6 hours, 24/64" choke, 83 barrels of oil, gas gauged 161 FCP, no water, FTP-400%, FCP-600%.

On June 1, flowed through 2" tubing 8 hours, 20/64" choke, 122.64 barrels of oil and no water, to establish 24 hour State Corporation Commission potential of 368 barrels. This potential allows 28 barrels per day for the remainder of June, 1959.

SLOPE TEST DATA

| DEPTH | ANGLE OF DEFLECTION |
|-------|---------------------|
| 275'  | 1/2 Degree          |
| 500'  | 1/2 "               |
| 805'  | 1/2 "               |
| 1250' | 3/4 "               |
| 1500' | 1/2 "               |
| 1750' | 1/2 "               |
| 2000' | 1/2 "               |
| 2250' | 3/4 "               |
| 2500' | 1/2 "               |
| 2750' | 1/2 "               |
| 3000' | 3/4 "               |
| 3350' | 1/2 "               |

# SKELLY OIL COMPANY

## CHANGE IN WELL RECORD

Give complete description of all cleaning out, deepening, plugging back and fishing jobs, changes in casing, material lost in hole, etc, not recorded in original well record.

LEASE NAME I. M. Toland  
 SEC. 27 T. 25S R. 14W  
 BLOCK \_\_\_\_\_ SURVEY \_\_\_\_\_

WELL NO. 1 DISTRICT Rocky Mountain  
 COUNTY Stafford AFE NO. 22243  
 STATE Kansas

### TYPE OF WORK PLUG AND ABANDON WELL

Date commenced June 23, 1967 Date completed June 27, 1967  
 Deepened from \_\_\_\_\_ to \_\_\_\_\_ Total Depth \_\_\_\_\_  
 Plugged back from 3890' to Surface P.B.T.D. \_\_\_\_\_  
 Cleaned out from \_\_\_\_\_ to \_\_\_\_\_  
 Production before 1.5 bbls. oil \_\_\_\_\_ bbls. water \_\_\_\_\_ cu. ft. gas.  
 Production after \_\_\_\_\_ bbls. oil \_\_\_\_\_ bbls. water \_\_\_\_\_ cu. ft. gas.  
 Tools owned by; Ralph Comstock Pipe Pulling, Inc. Kind used; Pulling Unit No. days rig time; Contr.  
 Cost of Job \$ \_\_\_\_\_ Revised Estimated Payout (Mos.) \_\_\_\_\_

### TREATMENT RECORD

| DATE | TYPE TREATMENT | INTERVAL TREATED | AMOUNT OF TREATMENT |
|------|----------------|------------------|---------------------|
|      |                |                  |                     |
|      |                |                  |                     |
|      |                |                  |                     |
|      |                |                  |                     |

### CHANGES IN CASING RECORD

| STRINGS    | SIZE | WHERE SET<br>(Depth) | CEMENTING RECORD |                         | REMARKS    |
|------------|------|----------------------|------------------|-------------------------|------------|
|            |      |                      | Sacks Used       | Top Cem't. Bh'd. Cas'g. |            |
| Production |      |                      |                  |                         |            |
| Liner      |      |                      |                  |                         | Top liner; |

| SIZE OD       | WT.           | THDS.     | KIND             | COND.    | LEFT IN   |             |          |             | PULLED OUT |           |             |          |             |          |
|---------------|---------------|-----------|------------------|----------|-----------|-------------|----------|-------------|------------|-----------|-------------|----------|-------------|----------|
|               |               |           |                  |          | Jts.      | LTM         | Feet     | In.         | Jts.       | LTM       | Feet        | In.      |             |          |
| <u>5-1/2"</u> | <u>14 1/2</u> | <u>SR</u> | <u>J55 R2 88</u> | <u>3</u> | <u>53</u> | <u>1717</u> | <u>3</u> | <u>1729</u> | <u>3</u>   | <u>68</u> | <u>2203</u> | <u>0</u> | <u>2218</u> | <u>0</u> |
|               |               |           |                  |          |           |             |          |             |            |           |             |          |             |          |
|               |               |           |                  |          |           |             |          |             |            |           |             |          |             |          |

### PRODUCING FROM

FORMATION \_\_\_\_\_ thru OPEN HOLE PERFORATIONS TOP \_\_\_\_\_ BOTTOM \_\_\_\_\_ Total No. Shots \_\_\_\_\_

REMARKS (Give review of work performed and any other comment of interest)

As the well is uneconomical to operate and as there are no other zones considered worthy of testing and the well is not needed for waterflooding, regular authority was granted to plug and abandon it.

On June 23, 1967, moved in and rigged up casing pulling unit of Ralph Comstock Pipe Pulling, Inc. Ran steel line measurement to 3890'.

|                    |                |
|--------------------|----------------|
| Sand               | 3890' to 3800' |
| 20 sacks of cement | 3800' to 3660' |
| Sand               | 3660' to 3550' |
| 5 sacks of cement  | 3550' to 3510' |

Shot 5 1/2" casing at 2942', 2750', 2547', 2410', 2267', and 2202'. Pulled 68 joints (2217.75') of 5 1/2" casing.

|                    |                       |
|--------------------|-----------------------|
| Mud                | 3510' to 290'         |
| Rock bridge        | 290' to 280'          |
| 25 sacks of cement | 280' to 205'          |
| Mud                | 205' to 40'           |
| Rock bridge        | 40' to 30'            |
| 10 sacks of cement | 30' to Base of cellar |
| Surface soil       | Cellar to Surface     |

Plugged and abandoned June 27, 1967.

SKELLY OIL COMPANY  
CHANGE IN WELL RECORD

Give complete description of all cleaning out, deepening, sanding, and other work done in this well. Give details of original well record.

LEASE NAME \_\_\_\_\_  
 WELL NO. \_\_\_\_\_  
 COUNTY \_\_\_\_\_  
 STATE \_\_\_\_\_

**RECEIVED**  
 OIL CORPORATION COMMISSION  
 AUG 28 1967  
 CONSERVATION DIVISION  
 WICHITA, KANSAS

TYPE OF WORK

Date commenced \_\_\_\_\_  
 Date completed \_\_\_\_\_  
 Production before \_\_\_\_\_  
 Production after \_\_\_\_\_  
 Loss of oil \_\_\_\_\_  
 Cost of job \$ \_\_\_\_\_

TREATMENT RECORD

| DATE | TYPE TREATMENT | INTERVAL TREATED | AMOUNT OF TREATMENT |
|------|----------------|------------------|---------------------|
|      |                |                  |                     |
|      |                |                  |                     |
|      |                |                  |                     |
|      |                |                  |                     |

CHANGES IN CASING RECORD

| STRING | SIZE | WHERE SET | CEMENTING RECORD |       | REMARKS |
|--------|------|-----------|------------------|-------|---------|
|        |      |           | DATE             | DEPTH |         |
|        |      |           |                  |       |         |
|        |      |           |                  |       |         |
|        |      |           |                  |       |         |
|        |      |           |                  |       |         |
|        |      |           |                  |       |         |

FOOTING PLAN

REMARKS (Give a summary of work performed and any other comment of interest.)  
 \_\_\_\_\_  
 \_\_\_\_\_

