

STATE CORPORATION COMMISSION OF KANSAS  
OIL & GAS CONSERVATION DIVISION  
WELL COMPLETION OR RECOMPLETION FORM  
ACO-1 WELL HISTORY  
DESCRIPTION OF WELL AND LEASE

S

API NO. 15-151-21-941-00-00 NOV. 0. 1. 1990

County...Pratt.....FROM CONFIDENTIAL  
...C. SE. NE ..... Sec. 10.. Twp. 29S.. Rge. 14.. X East  
.....3300... Ft North from Southeast Corner of Section  
.....660... Ft West from Southeast Corner of Section  
(Note: Locate well in section plat below)

Operator: License # 3667  
Name SOURCE PETROLEUM  
Address 200 W. Douglas, Suite 820  
Wichita, KS 67202  
City/State/Zip

Lease Name...KREHBIEL "H".....Well #...1.....  
Field Name.....Rell.....  
Producing Formation...D. & A.....  
Elevation: Ground.....2010.....KB.....2015.....

Purchaser...D. & A.....

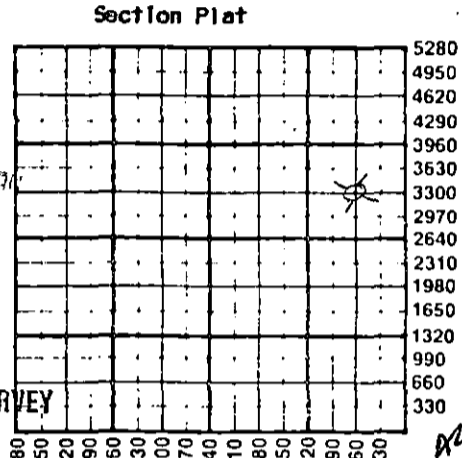
Operator Contact Person John D. Howard, Jr.  
Phone 316/262-7397

Contractor: License # 5418  
Name Allen Drilling Company

Wellsite Geologist Tim Pierce  
Phone

Designate Type of Completion  
X New Well \_\_\_ Re-Entry \_\_\_ Workover  
\_\_\_ Oil \_\_\_ SWD \_\_\_ Temp Abd  
\_\_\_ Gas \_\_\_ Inj \_\_\_ Delayed Comp.  
X Dry \_\_\_ Other (Core, Water Supply etc)

STATE CORPORATION COMMISSION  
OIL & GAS CONSERVATION DIVISION  
WICHITA BRANCH  
AUG 2 1989  
8-2-89



If OWNO: old well info as follows:  
Operator  
Well Name  
Comp. Date  
Old Total Depth

KANSAS GEOLOGICAL SURVEY  
WICHITA BRANCH  
AUG 03 1989

WATER SUPPLY INFORMATION

Disposition of Produced Water: \_\_\_ Disposal  
Docket # \_\_\_\_\_ \_\_\_ Repressuring

WELL HISTORY

Drilling Method:  
X Mud Rotary \_\_\_ Air Rotary \_\_\_ Cable

7/13/89 7/24/89 7/25/89  
Spud Date Date Reached TD Completion Date  
4720 KB  
Total Depth PBTD

Amount of Surface Pipe Set and Cemented at 410' feet  
Multiple Stage Cementing Collar Used? \_\_\_ Yes \_\_\_ No  
If yes, show depth set.....feet  
If alternate 2 completion, cement circulated  
from.....feet depth to.....w/.....SX cmt  
Cement Company Name B.J. Titan  
Invoice # UV069

Questions on this portion of the ACO-1 call:  
Water Resources Board (913) 296-3717  
Source of Water:  
Division of Water Resources Permit # T89-322  
X Groundwater 3300 Ft North from Southeast Corner  
(Well) 660 Ft West from Southeast Corner of  
NE/4 Sec 20 Twp 29 Rge 14 East X West  
\_\_\_ Surface Water.....Ft North from Southeast Corner  
(Stream, pond etc).....Ft West from Southeast Corner  
Sec Twp Rge East West  
\_\_\_ Other (explain).....  
(purchased from city, R.W.D. #)

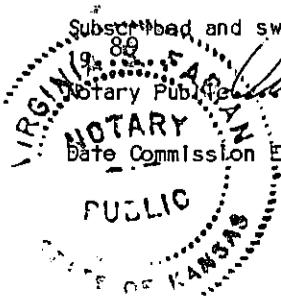
INSTRUCTIONS: This form shall be completed in triplicate and filed with the Kansas Corporation Commission, 200 Colorado Derby Building, Wichita, Kansas 67202, within 120 days of the spud date of any well. Rule 82-3-130, 82-3-107 and 82-3-106 apply. Information on side two of this form will be held confidential for a period of 12 months if requested in writing and submitted with the form. See rule 82-3-107 for confidentiality in excess of 12 months. One copy of all wireline logs and drillers time log shall be attached with this form. Submit CP-4 form with all plugged wells. Submit CP-111 form with all temporarily abandoned wells.

All requirements of the statutes, rules and regulations promulgated to regulate the oil and gas industry have been fully complied with and the statements herein are complete and correct to the best of my knowledge.

Signature John D. Howard, Jr  
Title General Manager Date 8/1/89

K.C.C. OFFICE USE ONLY  
Letter of Confidentiality Attached  
Wireline Log Received  
Drillers Timelog Received  
Distribution  
KCC SWD/Rep NGPA  
KGS Plug Other  
(Specify)

Subscribed and sworn to before me this 1st day of August  
Notary Public Virginia S. Fabian  
Date Commission Expires August 5, 1991



Sec 10 Twp 29 Rge 14 E

Operator Name SOURCE PETROLEUM Lease Name KREHBIEL "H" Well # 1

Sec. 10 Twp. 29S Rge. 14 East West County Pratt RELEASED

WELL LOG

NOV 0 1 1990

INSTRUCTIONS: Show important tops and base of formations penetrated. Detail all core logs, Report all stem tests giving interval tested, time tool open and closed, flowing and shut-in pressures, whether shut-in pressure reached static level, hydrostatic pressures, bottom hole temperature, fluid recovery, and flow rates if gas to surface during test. Attach extra sheet if more space is needed. Attach copy of log.

Drill Stem Tests Taken, Samples Sent to Geological Survey, Cores Taken, Formation Description (Log, Sample), Name, Top, Bottom (Anhydrite, Heebner, Lansing-KC, Viola, Simpson, Arbuckle, RTD)

CASING RECORD New Used Report all strings set-conductor, surface, intermediate, production, etc.

Table with 8 columns: Purpose of String, Size Hole Drilled, Size Casing Set (in O.D.), Weight Lbs/Ft., Setting Depth, Type of Cement, #Sacks Used, Type and Percent Additives

PERFORATION RECORD Shots Per Foot, Specify Footage of Each Interval Perforated, Acid, Fracture, Shot, Cement Squeeze Record (Amount and Kind of Material Used), Depth

TUBING RECORD Size, Set At, Packer at, Liner Run Yes No

Date of First Production, Producing Method (Flowing, Pumping, Gas Lift, Other (explain))

Estimated Production Per 24 Hours, Oil, Gas, Water, Gas-Oil Ratio, Gravity

METHOD OF COMPLETION Production Interval

- Disposition of gas: Vented, Sold, Used on Lease, Open Hole, Perforation, Other (Specify), Dually Completed, Commingled



ACO-1 ATTACHMENT

KREHBIEL "H" #1 - C SE NE, 10-19S-14W, Rawlins CO., KS

ORIGINAL

DST #1 4054-4074' Straddle Test  
 Lansing "B" Zone  
 30-45 30-60  
 1st flow weak blow throughout  
 2nd flow weak blow throughout  
 Rec: 90' MW, Chl 53,000  
 IHP: 2125 FHP: 2105  
 IFP: 60-60 FFP: 91-91  
 ISIP: 1429 FSIP: 1429  
 BHT 116°

RELEASED

NOV 0 1 1900

FROM CONFIDENTIAL

DST #2 4264-4290'  
 Swope Zone  
 30-45 30-45  
 1st open weak blow throughout  
 2nd open no blow  
 Rec: 30' drlg M w/SO on top of tool  
 IHP: 2287 FHP: 2267  
 IFP: 71-71 FFP: 81-81  
 ISIP: 1510 FSIP: 1479  
 BHT 117°

DST #3 4550-4570'  
 Basal Viola  
 30-60 30-60  
 Rec: 15' drlg mud w/spots of oil  
 IHP: 2368 FHP: 2348  
 IFP: 81-81 FFP: 81-81  
 ISIP: 91 FSIP: 91  
 BHT 126°

DST #4 4576-4596'  
 Simpson  
 30-60 30-60  
 1st flow 2" blow throughout  
 2nd flow weak blow and died  
 Rec: 30' drlg mud  
 IHP: 2378 FHP: 2358  
 IFP: 71-71 FFP: 81-81  
 ISIP: 558 FSIP: 578  
 BHT 127°

KANSAS GEOLOGICAL SURVEY  
WIGHTS BRANCH

AUG 0 3 1988

DST #5 4584-4602'  
 Simpson  
 45-60 60-90  
 weak increasing to strong blow both opens  
 Rec: 240' MW, 120'SW  
 IHP: 2378 FHP: 2358  
 IFP: 91-121 FFP: 172-203  
 ISIP: 1074 FSIP: 1074  
 BHT 127°, chl 53,000

DST #6 4614-4640'  
 Lower Simpson  
 30-60 30-60  
 Weak increasing to strong blow both opens  
 Rec: 240' SW  
 IHP: 2388 FHP: 2368  
 IFP: 91-111 FFP: 162-162  
 ISIP: 1135 FSIP: 1135  
 BHT 127°, chl 55,000