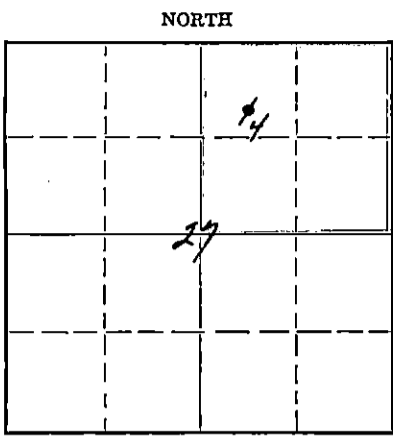


STATE OF KANSAS
STATE CORPORATION COMMISSION

WELL PLUGGING RECORD

Give All Information Completely
Make Required Affidavit
Mail or Deliver Report to:
Conservation Division
State Corporation Commission
800 Bitting Building
Wichita, Kansas

Stafford County. Sec. 27 Twp. 25S Rge. (E) 14 (W)
Location as "NE/CNW4/SW4" or footage from lines C. S./2 NW/4 NE/4
Lease Owner Skelly Oil Company, et al
Lease Name Kipp "A" Well No. 4
Office Address Box 1650, Tulsa, Oklahoma
Character of Well (completed as Oil, Gas or Dry Hole) Oil
Date well completed May 5, 19 42
Application for plugging filed April 2, 19 52
Application for plugging approved April 3, 19 52
Plugging commenced April 9, 19 52
Plugging completed April 24, 19 52
Reason for abandonment of well or producing formation Depleted Oil well



Locate well correctly on above Section Plat

If a producing well is abandoned, date of last production January 28, 19 52
Was permission obtained from the Conservation Division or its agents before plugging was commenced? Yes

Name of Conservation Agent who supervised plugging of this well Mr. M. A. Rives
Producing formation Lansing Lime Depth to top 3842' Bottom 3883' Total Depth of Well 3892 Feet
Show depth and thickness of all water, oil and gas formations.

OIL, GAS OR WATER RECORDS

CASING RECORD

| Formation | Content | From | To | OD Size | Put In | Pulled Out |
|--------------|---------|-------|-------|------------------|-------------------|-----------------|
| Lansing Lime | Oil | 3842' | 3883' | 8-5/8" 5-1/2" | 415'9" 3874'0" | None 2980'5" |
| | | | | | | |
| | | | | | | |
| | | | | | | |
| | | | | | | |
| | | | | | | |
| | | | | | | |
| | | | | | | |
| | | | | | | |
| | | | | | | |

Describe in detail the manner in which the well was plugged, indicating where the mud fluid was placed and the method or methods used in introducing it into the hole. If cement or other plugs were used, state the character of same and depth placed, from _____ feet to _____ feet for each plug set.

Sand 3892' to 3835'
5 sacks of cement 3835' to 3795'
Mud laden fluid 3795' to 251'
75 sacks of cement 251' to 6'
Surface soil 6' to 0'

RECEIVED
STATE CORPORATION COMMISSION
MAY 2 1952
5-2-52
CONSERVATION DIVISION
Wichita, Kansas

(If additional description is necessary, use BACK of this sheet)
Name of Plugging Contractor Barnes & Sons Pipe Pulling Company
Address 7 Elm Street
Russell, Kansas

STATE OF Kansas, COUNTY OF Reno, ss.
H. E. Wamsley (employee of owner) of the above-described well,
being first duly sworn on oath, says: That I have knowledge of the facts, statements, and matters herein contained and the log of the above-described well as filed and that the same are true and correct. So help me God.

(Signature) _____
Box 391, Hutchinson, Kansas
(Address)

SUBSCRIBED AND SWORN to before me this 1st day of May, 19 52.

My commission expires April 7, 1955

Josephine L. Johnson
Notary Public.

23-8390-6-51-20M
PLUGGING
FILE SEC. 27 T. 25 R. 14
BOOK PAGE 6 LINE 20
PLUGGING

SKELLY OIL COMPANY

REPORT OF CHANGE IN WELL RECORD

Give complete description of all cleaning out, deepening, plugging back and fishing jobs, changes in casing, material lost in hole, etc., not recorded in original well record.

LEASE NAME Kipp No. (Stafford Co., Kans.) WELL NO. 4

| CLEANING OUT RECORD | | | | PLUGGING BACK OR DEEPENING RECORD | | | |
|--------------------------|----------------|------------------|------------------|------------------------------------|------------------|---------------------|---------------------|
| Date commenced..... | 19..... | | | Date commenced..... | April 9, | 19 52 | |
| Date completed..... | 19..... | | | Date completed..... | April 24, | 19 52 | |
| Cleaned out from..... | to..... | T. D. | | Plugged back or deepened from..... | 3892' | to..... | 0' T. D. P. & A. |
| Prod. before..... | bbls. oil..... | bbls. water..... | cu. ft. gas..... | Prod. before..... | 1 bbls. oil..... | 99 bbls. water..... | -- cu. ft. gas..... |
| Prod. after..... | bbls. oil..... | bbls. water..... | cu. ft. gas..... | Prod. after..... | bbls. oil..... | bbls. water..... | cu. ft. gas..... |
| Kind of tools used:..... | | | | Kind of tools used:..... | Cable | | |
| Tools owned by:..... | | | | Tools owned by:..... | Barnes & Sons | | |

SHOT RECORD

| Date | Size shot | Qts. | Qts. | Qts. | Qts. |
|------|-------------------------------------|---------|------|---------|------|
| | Shot between | Ft. and | Ft. | Ft. and | Ft. |
| | Size of shell | | | | |
| | Put in by (Co.) | | | | |
| | Length anchor | | | | |
| | Distance below casing | | | | |
| | Damage to casing or casing shoulder | | | | |

CHANGES IN CASING RECORD

| SIZE | Wt. | Thds. | Where Set | PULLED OUT | | | LEFT IN | | | KIND | Cond'n | CEMENTING | |
|-----------|--------|-------|-----------|------------|------|-----|---------|------|-----|------------|--------|------------|-----------------|
| | | | | Jts. | Feet | In. | Jts. | Feet | In. | | | Sacks Used | Method Employed |
| 5 1/2" OD | 17 1/2 | 80 | 3842' | 95 | 3980 | 5 | 00 | 893 | 7 | J-55 R2 35 | B | | |
| | | | | | | | | | | | | | |
| | | | | | | | | | | | | | |

RECEIVED
STATE CORPORATION COMMISSION
MAY - 2 1952

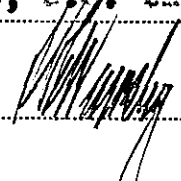
Liner set at..... Length..... Perforated at.....
Packer set at..... Size and kind.....

REMARKS (Give review of work accomplished and any other comment of interest) On April 9, 1952, tools of Barnes & Sons and plugged the well as follows: **CONSERVATION DIVISION**
Wichita, Kansas

Sand 3892' to 3835'
5 sacks of cement 3835' to 3795'

Shot 5 1/2" casing off at 3180', 3098', 3025', and 2965'. Pulled 95 joints (2980' 5") of 5 1/2" OD, 17 1/2, CR thd., R-2, J-55, 5 1/2" casing (3 cond.)

(Use reverse side for continuation of remarks and for formation record).



Superintendent.

REMARKS (Continued)

Mud laden fluid 3795' to 251'
75 sacks of cement 251' to 6'
Surface soil 6' to 0'

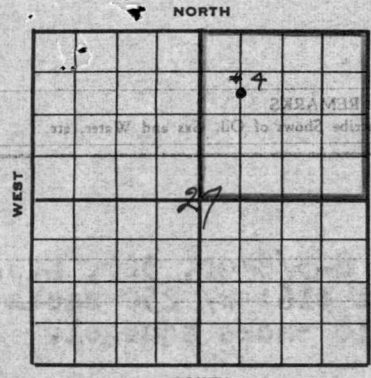
Plugged and abandoned April 24, 1952.

RECORD OF FORMATIONS

| FORMATION | TOP | BOTTOM | REMARKS |
|--|-----|--------|---------|
| Indicate Casing Points, Describe Shows of Oil, Gas and Water, etc. | | | |

APR 24 1952
CO. 10.00

SKELLY OIL COMPANY



Well Record

Lease Name and No. Kipp "A" 77111 Well No. 4 Elev. 1981' DP

Lease Description NE/4, Section 27-27-14

Location made March 31, 1942 by Rice County Engineer

feet from North line 990 feet from East line NE/4

feet from South line 660 feet from West line of Sec. 27

Work com'd April 2, 1942 Rig com'd April 5, 1942 Drlg. com'd April 8, 1942 Drlg. comp'd May 3, 1942

Built by drilling contractor

Rig Contractor Bodine Drilling Company, Great Bend, Kansas.

Drilling Contractor Top

Rotary Drilling from 3843' to 3843' Cable Tool Drilling from 3843' to 3892'

Commenced Producing May 5, 1942 Initial Prod. before shot or acid 1200' OIH in 14 hrs. Bbls.

by (bomb) Prod. after shot or acid 5251 (Indicated productivity of 3000 bbls.) Bbls.

Dry Gas Well Press. Volume _____ Cu. ft.

Casing Head Gas Pressure Volume _____ Cu. ft.

Braden Head (Size _____) Gas Pressure _____ Volume _____ Cu. ft.

Braden Head (Size _____) Gas Pressure _____ Volume _____ Cu. ft.

PRODUCING FORMATION Lansing Lime (Name) Top 3842' Bottom 3883' TOTAL DEPTH 3892'

CASING RECORD

| Size | Wt. | Thds. | Where Set | PULLED OUT | | | LEFT IN | | | KIND | Cond'n | CEMENTING | |
|---|-----------|-----------|-------------|------------|------|-----|------------|-------------|----------|----------------|------------|------------|--------------------|
| | | | | Jts. | Feet | In. | Jts. | Feet | In. | | | Sacks Used | Method Employed |
| <u>8-5/8" OD</u> | <u>32</u> | <u>10</u> | <u>416</u> | | | | <u>17</u> | <u>415</u> | <u>9</u> | <u>Lapweld</u> | <u>"B"</u> | <u>250</u> | <u>Halliburton</u> |
| <u>5 1/2" OD</u> | <u>17</u> | <u>8</u> | <u>3842</u> | | | | <u>123</u> | <u>3874</u> | <u>0</u> | <u>S. W.</u> | <u>"A"</u> | <u>125</u> | <u>Halliburton</u> |
| <u>(8-5/8" casing set 5' in cellar & 5 1/2" cased to derrick floor)</u> | | | | | | | | | | | | | |
| <u>(Used one 5 1/2" OD Baker Combination Guide and Float Shoe)</u> | | | | | | | | | | | | | |

Liner Set at _____ Length _____ Perforated at _____

Liner Set at _____ Length _____ Perforated at _____

Packer Set at _____ Size and Kind _____

Packer Set at _____ Size and Kind _____

SHOT OR ACID TREATMENT RECORD

| Date | FIRST | | SECOND | | THIRD | | FOURTH | |
|-------------------------------------|---------------|-------------|--------|-------|-------|-------|--------|-------|
| | Date | Depth | Date | Depth | Date | Depth | Date | Depth |
| <u>May 5, 1942</u> | <u>5000</u> | | | | | | | |
| Acid Used | | | | | | | | |
| Size Shot | <u>3842</u> | <u>3892</u> | | | | | | |
| Shot Between | <u>3842</u> | <u>3892</u> | | | | | | |
| Size of Shell | <u>Morgan</u> | | | | | | | |
| Put in by (Co.) | <u>Morgan</u> | | | | | | | |
| Length anchor | | | | | | | | |
| Distance below Cas'g | | | | | | | | |
| Damage to Casing or Casing Shoulder | <u>None</u> | | | | | | | |

SIGNIFICANT GEOLOGICAL FORMATIONS

| NAME | Top | Bottom | GAS | | OIL | | REMARKS |
|---------------------|-------------|--------|-------------|-------------|-------------|-------------|-------------------------------|
| | | | From | To | From | To | |
| <u>Lansing Lime</u> | <u>3696</u> | | | | <u>3696</u> | <u>3737</u> | <u>cli. sat. and porosity</u> |
| | | | | | <u>3746</u> | <u>3755</u> | <u>med. por., little sat.</u> |
| <u>Lansing Pay</u> | <u>3842</u> | | | | <u>3842</u> | <u>3843</u> | <u>Pay formation</u> |
| | | | <u>3864</u> | <u>3871</u> | <u>3864</u> | <u>3883</u> | <u>Pay formation</u> |

CLEANING OUT RECORDS

| | DATE COMMENCED | DATE COMPLETED | PROD. BEFORE | PROD. AFTER | REMARKS |
|-----|----------------|----------------|--------------|-------------|---------------------------------------|
| 1st | | | | | <u>See Reverse for other details.</u> |
| 2nd | | | | | <u>" " " " "</u> |
| 3rd | | | | | <u>" " " " "</u> |
| 4th | | | | | <u>" " " " "</u> |

PLUGGING BACK AND DEEPENING RECORDS

| | Date Commenced | Date Completed | No. Feet Plugged Back or Deepened | Prod. Before | Prod. After | REMARKS |
|-----|----------------|----------------|-----------------------------------|--------------|-------------|---------------------------------------|
| 1st | | | | | | <u>See Reverse for other details.</u> |
| 2nd | | | | | | <u>" " " " "</u> |
| 3rd | | | | | | <u>" " " " "</u> |
| 4th | | | | | | <u>" " " " "</u> |

(See Reverse for Record of Formation)

RECORD OF FORMATIONS

Form No. 100-2-41

| FORMATION | TOP | BOTTOM | REMARKS |
|---|-------|--------|--|
| Work com'd | 19 | 19 | |
| Surface soil, clay & sand | 0 | 240 | |
| Packer Set at | 240 | 420 | |
| Packer Set at | | | |
| Red bed | 420 | 430 | |
| Anhydrite | 850 | 885 | |
| Red bed | 885 | 970 | |
| Shale | 970 | 1280 | |
| Shells and salt | 1280 | 1420 | |
| Shale and lime | 1420 | 1600 | |
| Lime | 1600 | 1770 | |
| Sandy lime | 1770 | 1860 | |
| Lime | 1860 | 2255 | |
| Shale | 2255 | 2315 | |
| Shale and shells | 2315 | 2400 | |
| Lime and shale | 2400 | 2460 | |
| Lime | 2460 | 2520 | |
| Shale | 2520 | 2625 | |
| Shale and shells | 2625 | 2710 | |
| Shale and lime | 2710 | 2785 | |
| Shale | 2785 | 2880 | |
| Shale and lime | 2880 | 2955 | |
| Broken lime | 2955 | 3030 | |
| Lime | 3030 | 3060 | |
| Shale and lime | 3060 | 3125 | |
| Lime | 3125 | 3195 | |
| Broken lime | 3195 | 3285 | |
| Lime | 3285 | 3527 | |
| Shale | 3527 | 3544 | |
| Lime | 3544 | 3640 | |
| Shale | 3640 | 3696 | Top Lansing lime at 3696' |
| Dark grey crystalline lime | 3696 | 3709 | Slight porosity & saturation |
| Dark grey crystalline lime | 3709 | 3719 | " |
| Medium soft grey lime | 3719 | 3737 | " |
| Medium hard grey lime | 3737 | 3746 | Slight porosity |
| Medium soft grey and brown lime | 3746 | 3755 | Medium porosity, little saturation |
| Hard grey lime | 3755 | 3765 | No porosity |
| Shale | 3765 | 3780 | |
| Lime | 3780 | 3830 | |
| Grey cherty lime and shale | 3830 | 3847 | |
| Shale | 3847 | 3885 | |
| Soft brown oolitic lime | 3885 | 3892 | |
| Drilled 7-7/8" hole to 3847' | | | Set & cemented 5 1/2" OD, 17', 8 RT, with 4 1/2" casing at 3842' SLM with 4 sacks of cement & 4 sacks of slag. Finished at 12:15 AM, 4/23/42. Rig moved in and rigged up cable tools. Finished rigging up and bailed the hole down on 4/29 and 5" casing tested OK. Drilled cement and bottom plug and cement job tested OK. Correction 3847'. |
| Steel line measurement | 3847 | 3843 | SLM table equals 3843' derrick floor. Tested 3 hours, no oil or water. |
| DRILLED: | | | |
| Grey lime | 3843 | 3849 | No saturation or porosity |
| Same w/ little dark shale | 3849 | 3852 | |
| Same w/ 50% dark shale | 3852 | 3860 | Derrick was blown down in heavy wind storm at this point, making it necessary to dismantle and rebuild. Instead of rebuilding derrick, installed mast and drilled ahead as follows on May 2. 300' OIH in 60 hrs. No saturation or porosity |
| Grey lime w/ 10% grey shale | 3860 | 3864 | Good saturation and porosity, increase in oil to 600' in 3 hours, small amount of gas |
| Grey and brown lime, soft | 3864 | 3871 | |
| Grey and brown lime with little green shale | 3871 | 3879 | Slight porosity and saturation |
| Grey and brown lime | 3879 | 3883 | 900' OIH in 6 hours, no increase in gas. Porous & saturated, 1200' OIH in 14 hrs. |
| Grey lime w/ little green shale | 3883 | 3885 | Little porosity, no increases |
| Grey lime w/ little green shale | 3885 | 3892 | Stopped drilling on May 3, 1942. |
| TOTAL DEPTH | 3892' | | |

(See Reverse for Record of Formation)

Bailed and cleaned up hole, ran 2" tubing and treated with acid as follows:

ACID TREATMENT NO. 1 - Between 3842' and 3892'

Treatment put in by Morgan Acid Co., 5/5/42, using 5000 gallons of Morgan acid and 90 barrels of oil to fill hole and flush.

| TIME | CP | TP | REMARKS: |
|----------|------|-----|---|
| 10:27 AM | 0 | 0 | Filled hole with 55 barrels of oil then started acid in. |
| 10:42 " | 1200 | 800 | 1000 gallons of acid in hole |
| 10:55 " | 900 | 500 | 2000 gallons of acid in hole |
| 11:01 " | 1000 | 600 | 3200 gallons of acid in hole |
| 11:37 " | 800 | 400 | 5000 gallons of acid in hole |
| 12:02 " | 100 | 100 | Flushed with 35 barrels of oil. After acid treatment, let stand 1 hour then ran tubing swab four times and well started flowing and flowed 200 barrels of cut oil and acid water and quit flowing. |

On May 6th, ran rods and bottom hole pressure bomb and FOB 16 hours, 332 barrels of oil and no water before starting draw down potential test.

On May 7th, stabilized well on high rate at 16.48 barrels per hour with CP-590 TP-0. Stabilized well on low rate at 6.30 barrels per hour then loaded hole with 100 barrels of oil to recover bomb.

After pulling bomb, calculations indicated productivity of 5251 barrels of oil to establish 24 hour maximum S.C.C. potential of 3000 barrels. With a 25 acre allotment to this well, it was allowed to produce 56 barrels of oil per day for the remainder of May, 1942. This potential was effective May 6, 1942.

| SLOPE TEST DATA | | | |
|-------------------|-------|--------|-------|
| DEPTH | ANGLE | HORIZ. | VERT. |
| 250' | 0 | | |
| 500' | 1 | 4.4 | .1 |
| 750' | 1 | 4.4 | .1 |
| 1000' | 1 | 4.4 | .1 |
| 1250' | 1 | 4.4 | .1 |
| 1500' | 1 | 4.4 | .1 |
| 1750' | 1 | 4.4 | .1 |
| 2000' | 1/2 | 2.2 | .0 |
| 2250' | 1/2 | 2.2 | .0 |
| 2500' | 1 | 4.4 | .1 |
| 2750' | 1 | 4.4 | .1 |
| 3000' | 1 | 4.4 | .1 |
| 3250' | 1 | 4.4 | .1 |
| 3500' | 1 | 4.4 | .1 |
| 3750' | 1 | 4.4 | .1 |
| Total Deflections | | 57.2' | 1.2' |

Salcedo
Producing Company
2240 E. KNOX A

RECEIVED