

STATE CORPORATION COMMISSION OF KANSAS  
OIL & GAS CONSERVATION DIVISION  
WELL COMPLETION FORM  
ACO-1 WELL HISTORY  
DESCRIPTION OF WELL AND LEASE

Operator: License # 5238  
Name: Petroleum, Inc.  
Address 301 N. Main, Suite 900  
Wichita, KS 67202

City/State/Zip \_\_\_\_\_  
Purchaser: N/A

Operator Contact Person: R. G. Julius  
Phone ( 316 ) 291-8281

Contractor: Name: Murfin Drilling Co.  
License: 6033

Wellsite Geologist: Tyler H. Sanders

Designate Type of Completion  
 New Well  Re-Entry  Workover

Oil  SVD  SIOV  Temp. Abd.  
 Gas  ENHR  SIGW  
 Dry  Other (Core, WSW, Expl., Cathodic, etc)

If Workover/Re-Entry: old well info as follows:

Operator: \_\_\_\_\_

Well Name: \_\_\_\_\_

Comp. Date \_\_\_\_\_ Old Total Depth \_\_\_\_\_

Deepening  Re-perf.  Conv. to Inj/SVD  
 Plug Back  PSTD  
 Commingled  Docket No. \_\_\_\_\_  
 Dual Completion  Docket No. \_\_\_\_\_  
 Other (SVD or Inj?)  Docket No. \_\_\_\_\_

3-22-93 4-2-93 4-2-93  
Spud Date Date Reached TD Completion Date

API NO. 15- 075-20505-0000  
County Hamilton  
NE NE NE Sec. 30 Twp. 25 Rge. 41 X W

500 Feet from S/W (circle one) Line of Section  
450 Feet from E/W (circle one) Line of Section

Footages Calculated from Nearest Outside Section Corner:  
NE, SE, NW or SW (circle one)

Lease Name Gould Well # 2-30

Field Name Gould

Producing Formation D & A

Elevation: Ground 3590 KB 3598

Total Depth 5640 PSTD \_\_\_\_\_

Amount of Surface Pipe Set and Cemented at 775 Feet

Multiple Stage Cementing Collar Used?  Yes  No

If yes, show depth set \_\_\_\_\_ Feet

If Alternate II completion, cement circulated from \_\_\_\_\_

feet depth to \_\_\_\_\_ w/ \_\_\_\_\_ sx cat.

Drilling Fluid Management Plan 08A 6-16-93  
(Data must be collected from the Reserve Pit)

Chloride content 6,000 ppm Fluid volume 5340 bbls

De-watering method used Evaporation

Location of fluid disposal if hauled offsite: \_\_\_\_\_

Operator Name \_\_\_\_\_

Lease Name \_\_\_\_\_ License No. \_\_\_\_\_

Quarter \_\_\_\_\_ Sec. \_\_\_\_\_ Twp. \_\_\_\_\_ S. Eng. \_\_\_\_\_ E/W \_\_\_\_\_

County \_\_\_\_\_ Docket No. \_\_\_\_\_

INSTRUCTIONS: An original and two copies of this form shall be filed with the Kansas Corporation Commission, 200 Colorado Derby Building, Wichita, Kansas 67202, within 120 days of the spud date, recompletion, workover or conversion of a well. Rule 82-3-130, 82-3-106 and 82-3-107 apply. Information on side two of this form will be held confidential for a period of 12 months if requested in writing and submitted with the form (see rule 82-3-107 for confidentiality in excess of 12 months). One copy of all wireline logs and geologist well report shall be attached with this form. ALL CEMENTING TICKETS MUST BE ATTACHED. Submit CP-4 form with all plugged wells. Submit CP-111 form with all abandoned wells.

All requirements of the statutes, rules and regulations promulgated to regulate the oil and gas industry have been fully complied with and the statements herein are complete and correct to the best of my knowledge.

Signature Paul Bruntz

Title Clerical Supervisor-Production Date 6-11-93

Subscribed and sworn to before me this 11th day of June 19 93.

Notary Public Sherry Fraser

Date Commission Expires March 20, 1994

SHERRY FRASER  
NOTARY PUBLIC  
STATE OF KANSAS  
My Appt. Exp. 3-20-94

RECEIVED  
KANSAS CORPORATION COMMISSION  
6-14-93  
JUN 14 1993  
K.C.C. OFFICE USE ONLY  
F  Letter of Confidentiality Attached  
C  CONSERVATION DIVISION  
C  Geologist In/Rep. Received  
Distribution  
 KCC  SVD/Rep  NGPA  
 KGS  Plug  Other (Specify)

SIDE TWO

Operator Name Petroleum, Inc. Lease Name Gould Well # 2-30  
 Sec. 30 Twp. 25 Rge. 41  East  West  
 County Hamilton

INSTRUCTIONS: Show important tops and base of formations penetrated. Detail all cores. Report all drill stem tests giving interval tested, time tool open and closed, flowing and shut-in pressures, whether shut-in pressure reached static level, hydrostatic pressures, bottom hole temperature, fluid recovery, and flow rates if gas to surface during test. Attach extra sheet if more space is needed. Attach copy of log.

Drill Stem Tests Taken  Yes  No  
 (Attach Additional Sheets.)  
 Samples Sent to Geological Survey  Yes  No  
 Cores Taken  Yes  No  
 Electric Log Run  Yes  No  
 (Submit Copy.)  
 List All E.Logs Run:  
 Copy of all Logs & DST Test enclosed

Log Formation (Top), Depth and Datum  Sample  
 Name Top Datum  
 Copy of Geological Report enclosed

| CASING RECORD <input type="checkbox"/> New <input type="checkbox"/> Used  |                   |                           |                 |               |                |              |                            |
|---|-------------------|---------------------------|-----------------|---------------|----------------|--------------|----------------------------|
| Report all strings set-conductor, surface, intermediate, production, etc. |                   |                           |                 |               |                |              |                            |
| Purpose of String   | Size Hole Drilled | Size Casing Set (In O.D.) | Weight Lbs./Ft. | Setting Depth | Type of Cement | # Sacks Used | Type and Percent Additives |
| Surface   | 12 1/4            | 8 5/8                     | 24              | 775           | 65/35 poz      | 275          | 3% (6% gel)                |
|   |                   |                           |                 |               |                |              |                            |
|   |                   |                           |                 |               |                |              |                            |

| ADDITIONAL CEMENTING/SQUEEZE RECORD     |                  |                |             |                            |
|---|------------------|----------------|-------------|----------------------------|
| Purpose:                                | Depth Top Bottom | Type of Cement | #Sacks Used | Type and Percent Additives |
| <input type="checkbox"/> Perforate      |                  |                |             |                            |
| <input type="checkbox"/> Protect Casing |                  |                |             |                            |
| <input type="checkbox"/> Plug Back TD   |                  |                |             |                            |
| <input type="checkbox"/> Plug Off Zone  |                  |                |             |                            |

| Shots Per Foot | PERFORATION RECORD - Bridge Plugs Set/Type Specify Footage of Each Interval Perforated | Acid, Fracture, Shot, Cement Squeeze Record: (Amount and Kind of Material Used) | Depth |
|----------------|--|---|-------|
|                |  |   |       |
|                |  |   |       |
|                |  |   |       |

| TUBING RECORD                                  | Size  | Set At  | Packer At   | Liner Run <input type="checkbox"/> Yes <input type="checkbox"/> No |
|--|---|---------|-------------|--|
| Date of First, Resumed Production, SWD or Inj. | Producing Method <input type="checkbox"/> Flowing <input type="checkbox"/> Pumping <input type="checkbox"/> Gas Lift <input type="checkbox"/> Other (Explain) |         |             |  |
| Estimated Production Per 24 Hours              | Oil Bbls.   | Gas Mcf | Water Bbls. | Gas-Oil Ratio Gravity  |

Disposition of Gas:  Vented  Sold  Used on Lease (If vented, submit ACO-18.)  
 METHOD OF COMPLETION:  Open Hole  Perf.  Dually Comp.  Commingled  Other (Specify) \_\_\_\_\_  
 Production Interval \_\_\_\_\_

# TRILOBITE TESTING, L.L.C.

P.O. Box 362 • Hays, Kansas 67601

# ORIGINAL

## Drill-Stem Test Data

Well Name GOULD #2-30 Test No. 1 Date 3/30/ 3  
Company PETROLEUM INC Zone MORROW  
Address 301 N MAIN SUITE 00 WICHITA KS 67202 Elevation 35 9  
Co. Rep./Geo. TYLER SANDERS Cont. MURFIN DRLG RIG #22 Est. Ft. of Pay \_\_\_\_\_  
Location: Sec. 30 Twp. 25S Rge. 41W Co. HAMILTON State KS

Interval Tested 5113-5174 Drill Pipe Size 4.5" XH  
Anchor Length 61 Wt. Pipe I.D. - 2.7 Ft. Run \_\_\_\_\_  
Top Packer Depth 5109 Drill Collar - 2.25 Ft. Run 605  
Bottom Packer Depth 5113 Mud Wt. \_\_\_\_\_ lb/Gal.  
Total Depth 5174 Viscosity 50 Filtrate 9.9

Tool Open @ 9:15 AM Initial Blow 1/4" BLOW THROUGHOUT

Final Blow NO BLOW

Recovery - Total Feet 15 Flush Tool? NO

Rec. 15 Feet of DRILLING MUD  
Rec. \_\_\_\_\_ Feet of \_\_\_\_\_  
Rec. \_\_\_\_\_ Feet of \_\_\_\_\_  
Rec. \_\_\_\_\_ Feet of \_\_\_\_\_  
Rec. \_\_\_\_\_ Feet of \_\_\_\_\_

BHT 124 °F Gravity \_\_\_\_\_ °API @ \_\_\_\_\_ °F Corrected Gravity \_\_\_\_\_ °API  
RW \_\_\_\_\_ @ \_\_\_\_\_ °F Chlorides \_\_\_\_\_ ppm Recovery Chlorides 7000 ppm System

(A) Initial Hydrostatic Mud 2463.3 PSI AK1 Recorder No. 13277 Range 4125

(B) First Initial Flow Pressure 41.7 PSI @ (depth) 5117 w / Clock No. 25913

(C) First Final Flow Pressure 46.2 PSI AK1 Recorder No. 54 5 Range 4200

(D) Initial Shut-in Pressure 51.9 PSI @ (depth) 5134 w / Clock No. 27595

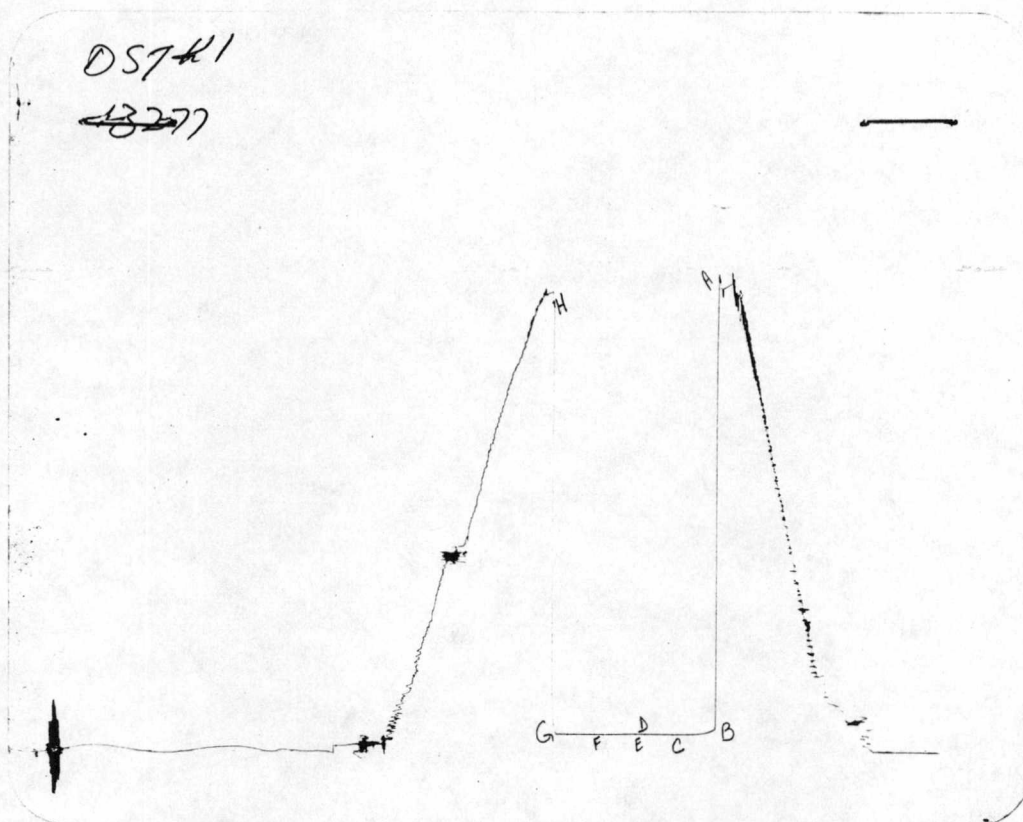
(E) Second Initial Flow Pressure 51.9 PSI AK1 Recorder No. \_\_\_\_\_ Range \_\_\_\_\_

(F) Second Final Flow Pressure 49.5 PSI @ (depth) \_\_\_\_\_ w / Clock No. \_\_\_\_\_

(G) Final Shut-in Pressure 54.1 PSI Initial Opening 30 Final Flow 30

(H) Final Hydrostatic Mud 2440.3 PSI Initial Shut-in 30 Final Shut-in 30

Our Representative TOM HORACEK



This is an actual photograph of recorder chart

|                                  | FIELD<br>READING | OFFICE<br>READING |
|----------------------------------|------------------|-------------------|
| (A) INITIAL HYDROSTATIC MUD      | 2459             | 2463.3            |
| (B) FIRST INITIAL FLOW PRESSURE  | 33               | 41.7              |
| (C) FIRST FINAL FLOW PRESSURE    | 33               | 46.2              |
| (D) INITIAL CLOSED-IN PRESSURE   | 45               | 51.8              |
| (E) SECOND INITIAL FLOW PRESSURE | 33               | 51.8              |
| (F) SECOND FINAL FLOW PRESSURE   | 33               | 48.5              |
| (G) FINAL CLOSED-IN PRESSURE     | 45               | 54.1              |
| (H) FINAL HYDROSTATIC MUD        | 2438             | 2440.3            |

INITIAL FLOW

GOULD #2-3

RECORDER # 5495

DST # 1

| TIME(MIN) | PRESSURE | <> PRESSURE |
|-----------|----------|-------------|
| 0         | 41.7     | 41.7        |
| 3         | 41.7     | 0           |
| 6         | 41.7     | 0           |
| 9         | 42.8     | 1.1         |
| 12        | 42.8     | 0           |
| 15        | 44       | 1.2         |
| 18        | 44       | 0           |
| 21        | 45.1     | 1.1         |
| 24        | 45.1     | 0           |
| 27        | 46.2     | 1.1         |
| 30        | 46.2     | 0           |

FINAL FLOW

RECORDER # 5495

DST # 1

| TIME(MIN) | PRESSURE | <> PRESSURE |
|-----------|----------|-------------|
| 0         | 51.8     | 51.8        |
| 3         | 51.8     | 0           |
| 6         | 50.6     | -1.2        |
| 9         | 50.6     | 0           |
| 12        | 50.6     | 0           |
| 15        | 50.6     | 0           |
| 18        | 49.6     | -1          |
| 21        | 49.6     | 0           |
| 24        | 49.6     | 0           |
| 27        | 48.5     | -1.1        |
| 30        | 48.5     | 0           |

GOULD #2-3  
INITIAL

DST #1  
SHUTIN  
30 TOTAL FLOW TIME

Slope ..... psi/cycle  
P \* ..... psi

ORIGINAL

| TIME(MIN) | Pws (psi) | Log<br>Horn T | <><br>PRESSURE | Horn T |
|-----------|-----------|---------------|----------------|--------|
| 3         | 46.2      | 1.041         | 46.2           | 11     |
| 6         | 46.2      | 0.778         | 0.0            | 6      |
| 9         | 47.3      | 0.637         | 1.1            | 4      |
| 12        | 47.3      | 0.544         | 0.0            | 4      |
| 15        | 48.5      | 0.477         | 1.2            | 3      |
| 18        | 48.5      | 0.426         | 0.0            | 3      |
| 21        | 49.6      | 0.385         | 1.1            | 2      |
| 24        | 49.6      | 0.352         | 0.0            | 2      |
| 27        | 50.7      | 0.325         | 1.1            | 2      |
| 30        | 51.8      | 0.301         | 1.1            | 2      |

FINAL

DST #1  
SHUTIN  
60 TOTAL FLOW TIME

Slope ..... psi/cycle  
P \* ..... psi

| Pws (psi) | Log<br>Horn T | <><br>PRESSURE | Horn T |    |
|-----------|---------------|----------------|--------|----|
| 3         | 49.6          | 1.322          | 49.6   | 21 |
| 6         | 49.6          | 1.041          | 0.0    | 11 |
| 9         | 49.6          | 0.885          | 0.0    | 8  |
| 12        | 50.7          | 0.778          | 1.1    | 6  |
| 15        | 50.7          | 0.699          | 0.0    | 5  |
| 18        | 51.8          | 0.637          | 1.1    | 4  |
| 21        | 51.8          | 0.586          | 0.0    | 4  |
| 24        | 53.0          | 0.544          | 1.2    | 4  |
| 27        | 53.0          | 0.508          | 0.0    | 3  |
| 30        | 54.1          | 0.477          | 1.1    | 3  |

FLUID SAMPLER DATA

ORIGINAL

Ticket No.: 5663

Date: 3/30/93

Company: PETROLEUM INC

Lease: GOULD #2-30

Test No.: 1

County: HAMILTON

Sec.: 30

Twp.: 25S

Rng.: 41W

SAMPLER RECOVERY

Gas

Oil

Mud 4000

Water

Other

Pressure 25

TOTAL 4000

SAMPLER ANALYSIS

Resistivity ohms@ F

Chlorides ppm.

Gravity corrected @60F

PIT MUD ANALYSIS

Chlorides 7000

Resistivity ohms@ F

Viscosity 50

Mud Wt. 9

Filtrate 8.8

Other

PIPE RECOVERY

TOP

Resistivity ohms@ F

Chlorides ppm

MIDDLE

Resistivity ohms@ F

Chlorides ppm

BOTTOM

Resistivity ohms@ F

Chlorides ppm

# TRILOBITE TESTING L.L.C.

P.O. Box 362 • Hays, Kansas 67601

# ORIGINAL

## Test Ticket

No 5663

Well Name & No. Could #2-30 Test No. #1 Date 3-30-93  
 Company Petroleum Inc. Zone Tested Marrow  
 Address 301 N. main St. 900 Wichita Ks 67202 Elevation 3598 (KB)  
 Co. Rep./Geo. Tyler Sanders cont. Martin Drlys #22 Est. Ft. of Pay \_\_\_\_\_  
 Location: Sec. 30 Twp. 25 Rge. 41 w Co. Hamilton State Ks  
 No. of Copies 9 Distribution Sheet \_\_\_\_\_ Yes X No Turnkey \_\_\_\_\_ Yes \_\_\_\_\_ No \_\_\_\_\_ Evaluation \_\_\_\_\_

Interval Tested 5113-5174 Drill Pipe Size 4.5 x-Hole  
 Anchor Length 61' Top Choke — 1" \_\_\_\_\_ Bottom Choke — 3/4" \_\_\_\_\_  
 Top Packer Depth 5108 Hole Size — 7 7/8" \_\_\_\_\_ Rubber Size — 6 3/4" \_\_\_\_\_  
 Bottom Packer Depth 5113 Wt. Pipe I.D. — 2.7 Ft. Run \_\_\_\_\_  
 Total Depth 5174 Drill Collar — 2.25 Ft. Run 605'  
 Mud Wt. 9.0 lb/gal. Viscosity 50 Filtrate 8.8  
 Tool Open @ 8:15 AM Initial Blow 1/4 blow through out

Final Blow NO blow

Recovery — Total Feet 15' Feet of Gas In Pipe \_\_\_\_\_ Flush Tool? NO

| Rec.            | Feet Of                  | %gas | %oil | %water | %mud |
|-----------------|--------------------------|------|------|--------|------|
| Rec.            | Feet Of                  | %gas | %oil | %water | %mud |
| Rec. <u>15'</u> | Feet Of <u>Drlys mud</u> | %gas | %oil | %water | %mud |
| Rec.            | Feet Of                  | %gas | %oil | %water | %mud |
| Rec.            | Feet Of                  | %gas | %oil | %water | %mud |

BHT 124 °F Gravity \_\_\_\_\_ °API @ \_\_\_\_\_ °F Corrected Gravity \_\_\_\_\_ °API

RW \_\_\_\_\_ @ \_\_\_\_\_ °F Chlorides \_\_\_\_\_ ppm Recovery Chlorides 2000 ppm System

- (A) Initial Hydrostatic Mud 2459 PSI AK1 Recorder No. 13277 Range 4125
- (B) First Initial Flow Pressure 33 PSI @ (depth) 5117 w/Clock No. 25813
- (C) First Final Flow Pressure 33 PSI AK1 Recorder No. 5495 Range 4200
- (D) Initial Shut-In Pressure 45 PSI @ (depth) 5134 w/Clock No. 27585
- (E) Second Initial Flow Pressure 33 PSI AK1 Recorder No. \_\_\_\_\_ Range \_\_\_\_\_
- (F) Second Final Flow Pressure 33 PSI @ (depth) \_\_\_\_\_ w/Clock No. \_\_\_\_\_
- (G) Final Shut-In Pressure 45 PSI Initial Opening 30 Test X 600
- (H) Final Hydrostatic Mud 2438 PSI Initial Shut-in 30 Jars X 200

TRILOBITE TESTING L.L.C. SHALL NOT BE LIABLE FOR DAMAGE OF ANY KIND OF THE PROPERTY OR PERSONNEL OF THE ONE FOR WHOM A TEST IS MADE, OR FOR ANY LOSS SUFFERED OR SUSTAINED, DIRECTLY OR INDIRECTLY, THROUGH THE USE OF ITS EQUIPMENT, OR ITS STATEMENTS OR OPINION CONCERNING THE RESULTS OF ANY TEST. TOOLS LOST OR DAMAGED IN THE HOLE SHALL BE PAID FOR AT COST BY THE PARTY FOR WHOM THE TEST IS MADE.

Final Flow 30 Safety Joint X 50  
 Final Shut-in 30 Straddle \_\_\_\_\_  
 Circ. Sub \_\_\_\_\_  
 Sampler X 200  
 Extra Packer \_\_\_\_\_  
 Other \_\_\_\_\_

Approved By Tyler Sanders  
 Our Representative Tom Horacek

TOTAL PRICE \$ 1050.00



# TRILOBITE TESTING, L.L.C.

P.O. Box 362 • Hays, Kansas 67601

ORIGINAL

## Drill-Stem Test Data

Well Name GOULD #2-30 Test No. 2 Date 3/31/93  
Company PETROLEUM INC Zone KEYS  
Address 301 N MAIN SUITE 900 WICHITA KS 67202 Elevation 3598  
Co. Rep./Geo. TYLER SANDERS Cont. MURFIN DRLG RIG #22 Est. Ft. of Pay \_\_\_\_\_  
Location: Sec. 30 Twp. 25S Rge. 41W Co. HAMILTON State KS

Interval Tested 5414-5445 Drill Pipe Size 4.5" XH  
Anchor Length 31 Wt. Pipe I.D. - 2.7 Ft. Run \_\_\_\_\_  
Top Packer Depth 5409 Drill Collar - 2.25 Ft. Run 636  
Bottom Packer Depth 5414 Mud Wt. 9 lb/Gal.  
Total Depth 5445 Viscosity 56 Filtrate 10.4

Tool Open @ 4:50 pm Initial Blow 1/2" BLOW THROUGHOUT

Final Blow NO BLOW

Recovery - Total Feet 65 Flush Tool? NO

Rec. 65 Feet of DRILLING MUD  
Rec. \_\_\_\_\_ Feet of \_\_\_\_\_  
Rec. \_\_\_\_\_ Feet of \_\_\_\_\_  
Rec. \_\_\_\_\_ Feet of \_\_\_\_\_  
Rec. \_\_\_\_\_ Feet of \_\_\_\_\_

Density 126 °F Gravity \_\_\_\_\_ °API @ \_\_\_\_\_ °F Corrected Gravity \_\_\_\_\_ °API  
RW \_\_\_\_\_ @ \_\_\_\_\_ °F Chlorides \_\_\_\_\_ ppm Recovery Chlorides 7000 ppm System

(A) Initial Hydrostatic Mud 2652.3 PSI AK1 Recorder No. 13277 Range 4125

(B) First Initial Flow Pressure 39.5 PSI @ (depth) 5417 w / Clock No. 25813

(C) First Final Flow Pressure 47.4 PSI AK1 Recorder No. 5495 Range 4200

(D) Initial Shut-in Pressure 1247.2 PSI @ (depth) 5442 w / Clock No. 27585

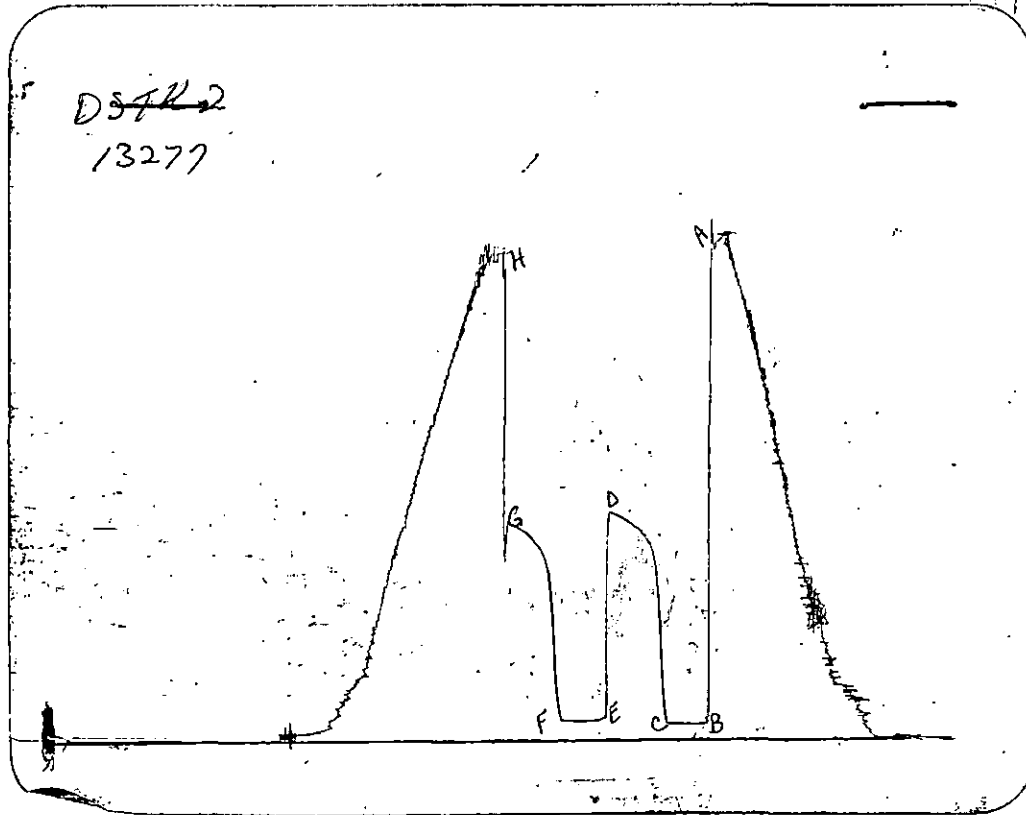
(E) Second Initial Flow Pressure 56.3 PSI AK1 Recorder No. \_\_\_\_\_ Range \_\_\_\_\_

(F) Second Final Flow Pressure 61.9 PSI @ (depth) \_\_\_\_\_ w / Clock No. \_\_\_\_\_

(G) Final Shut-in Pressure 1203.8 PSI Initial Opening 30 Final Flow 30

(H) Final Hydrostatic Mud 2598.4 PSI Initial Shut-in 45 Final Shut-in 45

Our Representative TOM HORACEK



This is an actual photograph of recorder chart

|                                  | FIELD<br>READING | OFFICE<br>READING |
|----------------------------------|------------------|-------------------|
| (A) INITIAL HYDROSTATIC MUD      | 2657             | 2652.3            |
| (B) FIRST INITIAL FLOW PRESSURE  | 45               | 39.5              |
| (C) FIRST FINAL FLOW PRESSURE    | 45               | 47.4              |
| (D) INITIAL CLOSED-IN PRESSURE   | 1246             | 1247.2            |
| (E) SECOND INITIAL FLOW PRESSURE | 56               | 56.3              |
| (F) SECOND FINAL FLOW PRESSURE   | 67               | 61.9              |
| (G) FINAL CLOSED-IN PRESSURE     | 1193             | 1203.8            |
| (H) FINAL HYDROSTATIC MUD        | 2605             | 2598.4            |

ORIGINAL

INITIAL FLOW

RECORDER # 5495 DST # 2

| TIME(MIN) | PRESSURE | <> PRESSURE |
|-----------|----------|-------------|
| 0         | 39.5     | 39.5        |
| 3         | 42.8     | 3.3         |
| 6         | 45.1     | 2.3         |
| 9         | 45.1     | 0           |
| 12        | 47.8     | 2.7         |
| 15        | 47.8     | 0           |
| 18        | 47.8     | 0           |
| 21        | 47.8     | 0           |
| 24        | 47.8     | 0           |
| 27        | 47.8     | 0           |
| 30        | 47.8     | 0           |

FINAL FLOW

RECORDER # 5495 DST # 2

| TIME(MIN) | PRESSURE | <> PRESSURE |
|-----------|----------|-------------|
| 0         | 56.3     | 39.5        |
| 3         | 57.5     | 3.3         |
| 6         | 57.5     | 2.3         |
| 9         | 57.5     | 0           |
| 12        | 57.5     | 2.7         |
| 15        | 57.5     | 0           |
| 18        | 58.6     | 0           |
| 21        | 58.6     | 0           |
| 24        | 59.7     | 0           |
| 27        | 60.8     | 0           |
| 30        | 61.9     | 0           |

GOULD #2-30  
INITIAL

DST #2  
SHUTIN  
30 TOTAL FLOW TIME

Slope 221189.64 psi/cycle  
P \* 1333 psi

ORIGINAL

| TIME(MIN) | Pws (psi) | Horn T | Log <><br>PRESSURE | Horn T |
|-----------|-----------|--------|--------------------|--------|
| 3         | 196.4     | 1.041  | 196.4              | 11     |
| 6         | 705.7     | 0.778  | 509.3              | 6      |
| 9         | 977.7     | 0.637  | 272.0              | 4      |
| 12        | 1072.8    | 0.544  | 95.1               | 4      |
| 15        | 1119.3    | 0.477  | 46.5               | 3      |
| 18        | 1153.1    | 0.426  | 33.8               | 3      |
| 21        | 1171.1    | 0.385  | 18.0               | 2      |
| 24        | 1190.1    | 0.352  | 19.0               | 2      |
| 27        | 1207.1    | 0.325  | 17.0               | 2      |
| X 30      | 1216.5    | 0.301  | 9.4                | 2      |
| 33        | 1224.9    | 0.281  | 8.4                | 2      |
| 36        | 1233.4    | 0.263  | 8.5                | 2      |
| 39        | 1236.6    | 0.248  | 3.2                | 2      |
| 42        | 1245.1    | 0.234  | 8.5                | 2      |
| X 45      | 1247.1    | 0.222  | 2.0                | 2      |

GOULD #2-30  
FINAL

DST #2  
SHUTIN  
60 TOTAL FLOW TIME

Slope 120.87 psi/cycle  
P \* 1248 psi

| TIME(MIN) | Pws (psi) | Horn T | Log <><br>PRESSURE | Horn T |
|-----------|-----------|--------|--------------------|--------|
| 3         | 137.8     | 1.322  | 137.8              | 21     |
| 6         | 473.2     | 1.041  | 335.4              | 11     |
| 9         | 844.5     | 0.885  | 371.3              | 8      |
| 12        | 969.2     | 0.778  | 124.7              | 6      |
| 15        | 1031.6    | 0.699  | 62.4               | 5      |
| 18        | 1070.7    | 0.637  | 39.1               | 4      |
| 21        | 1103.4    | 0.586  | 32.7               | 4      |
| 24        | 1129.9    | 0.544  | 26.5               | 4      |
| 27        | 1151.1    | 0.508  | 21.2               | 3      |
| 30        | 1164.7    | 0.477  | 13.6               | 3      |
| 33        | 1177.4    | 0.450  | 12.7               | 3      |
| 36        | 1184.7    | 0.426  | 7.3                | 3      |
| 39        | 1193.2    | 0.405  | 8.5                | 3      |
| X 42      | 1201.7    | 0.385  | 8.5                | 2      |
| X 45      | 1203.8    | 0.368  | 2.1                | 2      |

FLUID SAMPLER DATA

ORIGINAL

Ticket No.: 5664 Date: 3/31/93  
 Company: PETROLEUM INC  
 Lease: GOULD #2-30 Test No.: 2  
 County: HAMILTON Sec.: 30 Twp.: 25S Rng.: 41W

SAMPLER RECOVERY

Gas  
 Oil  
 Mud 4000  
 Water  
 Other  
 Pressure 1050  
 TOTAL 4000

SAMPLER ANALYSIS

Resistivity ohms@ F  
 Chlorides ppm.  
 Gravity corrected @60F

PIT MUD ANALYSIS

Chlorides 7000  
 Resistivity ohms@ F  
 Viscosity 56  
 Mud Wt. 9  
 Filtrate 10.4  
 Other

PIPE RECOVERY

TOP  
 Resistivity ohms@ F  
 Chlorides ppm  
 MIDDLE  
 Resistivity ohms@ F  
 Chlorides ppm  
 BOTTOM  
 Resistivity ohms@ F  
 Chlorides ppm

# TRILOBITE TESTING L.L.C.

P.O. Box 362 • Hays, Kansas 67601

ORIGINAL

## Test Ticket

No 5664

Well Name & No. Could #2-30 Test No. #2 Date 3-31-93  
 Company Petroleum Inc. Zone Tested Keys  
 Address 301 N. Main St. 900 Wichita Ks 67202 Elevation 3598 (KR)  
 Co. Rep./Geo. Tyler Sanders Cont. Mudco Drllg #22 Est. Ft. of Pay \_\_\_\_\_  
 Location: Sec. 30 Twp. 25 Rge. 41 W Co. Hamilton State KS  
 No. of Copies 9 Distribution Sheet Yes X No Turnkey Yes X No Evaluation \_\_\_\_\_

Interval Tested 5414-5445 Drill Pipe Size 4.5 x-Hole  
 Anchor Length 31' Top Choke — 1" Bottom Choke — 3/4"  
 Top Packer Depth 5409 Hole Size — 7 7/8" Rubber Size — 6 3/4"  
 Bottom Packer Depth 5414 Wt. Pipe I.D. — 2.7 Ft. Run —  
 Total Depth 5445 Drill Collar — 2.25 Ft. Run 636'  
 Mud Wt. 9.0 lb/gal. Viscosity 56 Filtrate 10.4  
 Tool Open @ 4:50 pm Initial Blow 1/2 blow through out.

Final Blow NO blow

| Recovery — Total Feet                   | Feet of Gas in Pipe                               | Flush Tool? |
|---|---|-------------|
| <u>65'</u>                              |   | <u>NO</u>   |
| Rec. _____ Feet Of _____                | % gas _____ % oil _____ % water _____ % mud _____ |             |
| Rec. _____ Feet Of _____                | % gas _____ % oil _____ % water _____ % mud _____ |             |
| Rec. <u>65'</u> Feet Of <u>Drly mud</u> | % gas _____ % oil _____ % water _____ % mud _____ |             |
| Rec. _____ Feet Of _____                | % gas _____ % oil _____ % water _____ % mud _____ |             |
| Rec. _____ Feet Of _____                | % gas _____ % oil _____ % water _____ % mud _____ |             |

BHT 126 °F Gravity \_\_\_\_\_ °API @ \_\_\_\_\_ °F Corrected Gravity \_\_\_\_\_ °API

RW \_\_\_\_\_ @ \_\_\_\_\_ °F Chlorides \_\_\_\_\_ ppm Recovery Chlorides 7000 ppm System

- (A) Initial Hydrostatic Mud 2657 PSI Ak1 Recorder No. 13277 Range 4125
- (B) First Initial Flow Pressure 45 PSI @ (depth) 5417 w/Clock No. 25813
- (C) First Final Flow Pressure 45 PSI AK1 Recorder No. 5495 Range 4200
- (D) Initial Shut-In Pressure 1246 PSI @ (depth) 5442 w/Clock No. 27585
- (E) Second Initial Flow Pressure 56 PSI AK1 Recorder No. \_\_\_\_\_ Range \_\_\_\_\_
- (F) Second Final Flow Pressure 67 PSI @ (depth) \_\_\_\_\_ w/Clock No. \_\_\_\_\_
- (G) Final Shut-In Pressure 1193 PSI Initial Opening 30 Test X 700.00
- (H) Final Hydrostatic Mud 2605 PSI Initial Shut-In 45 Jars X 200.00

TRILOBITE TESTING L.L.C. SHALL NOT BE LIABLE FOR DAMAGE OF ANY KIND OF THE PROPERTY OR PERSONNEL OF THE ONE FOR WHOM A TEST IS MADE, OR FOR ANY LOSS SUFFERED OR SUSTAINED, DIRECTLY OR INDIRECTLY, THROUGH THE USE OF ITS EQUIPMENT, OR ITS STATEMENTS OR OPINION CONCERNING THE RESULTS OF ANY TEST. TOOLS LOST OR DAMAGED IN THE HOLE SHALL BE PAID FOR AT COST BY THE PARTY FOR WHOM THE TEST IS MADE.

Final Flow 30 Safety Joint X 50.00  
 Final Shut-In 45 Straddle \_\_\_\_\_  
 Circ. Sub \_\_\_\_\_  
 Sampler X 200.00

Approved By Billy Daugherty  
 Our Representative Tom Horacek

Extra Packer \_\_\_\_\_  
 Other (extra copies)  
 TOTAL PRICE \$ 1150.00

ORIGINAL

TELEPHONE: AREA CODE 913 483-2627

ALLIED CEMENTING COMPANY, INC. P. O. BOX 31 RUSSELL, KANSAS 67665

41143  
53202

TO: Petroleum, Inc.

INVOICE NO. 63577

P. O. Box 1255

PRODUCTION DEPARTMENT  
DEV.  AFE  
OPER. NO. 232-053-93  
LEASE: Gould 2-30  
USED FOR: 20  
Cement 858 csg.  
APPROVED 18 RLB

PURCHASE ORDER NO.

Liberal, KS 67905

LEASE NAME Gould #2-30

DATE 3-23-93

SERVICE AND MATERIALS AS FOLLOWS:

|                                    |            |
|------------------------------------|------------|
| Common 279 sks @\$6.85             | \$1,911.15 |
| Pozmix 96 sks @\$3.00              | 288.00     |
| Gel 19 sks @\$7.00                 | 133.00     |
| Chloride 11 sks @\$25.00           | 275.00     |
| Flo Seal 94# @\$1.00               | 94.00      |
| 1 plug                             | 63.00      |
| Handling 375 sks @\$1.00           | 375.00     |
| Mileage (50) @\$.04¢ per sk per mi | 750.00     |
| Surface                            | 430.00     |
| Mi @\$2.25 pmp trk chg             | 112.50     |
| 476' @\$.39¢ over 300'             | 175.00     |

RECEIVED

MAR 31 RECD

PETROLEUM INC. LIBERAL, KANSAS

RECEIVED

APR 1 1993

RECEIVED

KANSAS CORPORATION COMMISSION

JUN 14 1993

CONSERVATION DIVISION WICHITA, KS

1,905.50

|                     |          |
|---------------------|----------|
| Guide Shoe-----     | \$224.00 |
| AFU-----            | 258.00   |
| 1 Basket-----       | 180.00   |
| 2 Centralizers----- | 122.00   |

If account CURRENT 20% discount will be allowed ONLY if paid within 30 days from date of invoice.

784.00

\$5,390.65  
-1,078.13

Total  
4,312.52

Cement circulated Thank you!  
All Prices Are Net, Payable 30 Days Following Date of Invoice. 1 1/2% Charged Thereafter.

4,312.52



REMIT TO: P O BOX 890786 DALLAS TX 75389-0788

INVOICE

0312

*200*  
*54781*  
*54072*

|                |                              |
|----------------|------------------------------|
| INVOICE DATE   | 04/02/93                     |
| PAGE           |                              |
| INVOICE NUMBER | 03-12-5146                   |
| TYPE SERVICE   | CEMENTING<br>PLUG TO ABANDON |

62744s  
PETROLEUM INC  
BOX 1255KS  
LIBERAL KS 67991

|                          |       |               |                       |                                       |                        |
|--------------------------|-------|---------------|-----------------------|---------------------------------------|------------------------|
| WELL NAME / JOB SITE     | STATE | COUNTY / CITY | SERVICE FROM LOCATION | SHIPPED VIA                           | CUSTOMER P.O. NO./REF. |
| COULD 2-30               | KS    | HAMILTON      | ULYSSES               | AS                                    |                        |
| LOCATION / PLANT ADDRESS |       |               | DATE OF SERVICE ORDER | CUSTOMER OR AUTHORIZED REPRESENTATIVE |                        |
| SEC 30-25-41W            |       |               | 04/02/93              | BILLY DAUGHTERY                       |                        |

| ITEM CODE | DESCRIPTION                  | UOM | QTY  | UNIT PRICE    | AMOUNT   |
|-----------|------------------------------|-----|------|---------------|----------|
| 102872030 | LNR/SQZ/PLG DC 2501-3000'    | 9HR | 1    | 1,210.0000    | 1,210.00 |
| 059200002 | MILEAGE, ALL OTHER EQUIPMENT | MI  | 45   | 2.6500        | 119.25   |
| 049102000 | TRANSPORTATION CHMT TON MILE | MI  | 630  | .8800         | 554.40   |
| 049100000 | SERVICE CHG CEMENT MATL LAND | CFT | 332  | 1.2000        | 398.40   |
| 059697000 | PACR TREAT ANALYSIS RECORDER | JOB | 1    | 140.0000      | 140.00   |
| 040015000 | D909, CEMENT CLASS H         | CFT | 184  | 7.4700        | 1,374.48 |
| 045000000 | D35, LITEPOZ 3 EXTENDER      | CFT | 122  | 3.9400        | 480.68   |
| 045014050 | D20, BENTONITE EXTENDER      | LBS | 1580 | .1500         | 237.00   |
| 044003025 | D29, CELLOPHANE FLAKES       | LBS | 76   | 1.5900        | 120.84   |
| 048601000 | CEMENT HEAD RENTAL           | JOB | 1    | .0000         | N/C      |
|           | DISCOUNT - MATERIAL          |     |      |               | 442.60-  |
|           | DISCOUNT - SERVICE           |     |      |               | 484.41-  |
|           |                              |     |      | SUB TOTAL --  | 3,708.04 |
| M C       | STATE TAX ON                 |     |      | 2,213.92      | 108.49   |
| M F C     | LOCAL TAX ON                 |     |      | 2,213.92      | 22.14    |
|           |                              |     |      | AMOUNT DUE -- | 3,838.67 |

**RECEIVED**  
APR 28 PAID  
PETROLEUM INC.  
LIBERAL, KANSAS

PRODUCTION DEPARTMENT  
DEV. V AFE  
OPER. NO. 232-053-93  
LEASE: Bould 2-30  
USED FOR: 26  
P+A  
APPROVED LB RLS

*need approval*  
*R. Julius*  
**RECEIVED**  
APR 29 1993  
ACCOUNTING

**RECEIVED**  
KANSAS CORPORATION COMMISSION  
JUN 14 1993  
CONSERVATION DIVISION  
WICHITA, KS

WITH QUESTIONS CALL 316-356-1272  
FEDERAL TAX ID # 38-239-7173  
TERMS -- NET 30 DAYS DUE ON OR BEFORE MAY 02, 1993

THANK YOU. WE APPRECIATE YOUR BUSINESS.

*J. B. Watson*  
T/B WATSON