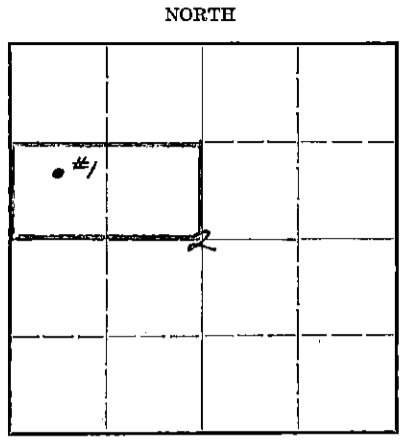


STATE OF KANSAS  
STATE CORPORATION COMMISSION  
Give All Information Completely  
Make Required Affidavit  
Mail or Deliver Report to:  
Conservation Division  
State Corporation Commission  
800 Bittling Building  
Wichita, Kansas

FORMATION PLUGGING RECORD

Strike out upper line when reporting plugging of formations.

Stafford County, Sec. 2 Twp. 25S Rge. 15 (E) 15 (W)  
Location as "NE $\frac{1}{4}$ NW $\frac{1}{4}$ SW $\frac{1}{4}$ " or footage from lines. C N $\frac{1}{2}$  SW $\frac{1}{4}$  NW $\frac{1}{4}$   
Lease Owner Skelly Oil Company  
Lease Name Nellie May Daniel Well No. 1  
Office Address Box 391, Hutchinson, Kansas  
Character of Well (completed as Oil, Gas or Dry Hole) Dry Hole  
Date well completed January 1 19 46  
Application for plugging filed January 2 (Written) 19 46  
Application for plugging approved January 9 (Written) 19 46  
Plugging commenced January 2 19 46  
Plugging completed January 2 19 46  
Reason for abandonment of well or producing formation Dry Hole



Locate well correctly on above Section Flat

If a producing well is abandoned, date of last production 19...  
Was permission obtained from the Conservation Division or its agents before plugging was commenced? Yes (Verbally on January 2, 1946)

Name of Conservation Agent who supervised plugging of this well H. W. Kerr  
Producing formation Dry Hole Depth to top Bottom Total Depth of Well 4406 Feet  
Show depth and thickness of all water, oil and gas formations.

OIL, GAS OR WATER RECORDS

CASING RECORD

| Formation     | Content | From  | To | Size      | Put In  | Pulled Out |
|---------------|---------|-------|----|-----------|---------|------------|
| Lansing Lime  | Dry     | 3746' |    | 8-5/8" OD | 958' 3" | None       |
| Viola Lime    | "       | 4259' |    |           |         |            |
| Simpson Shale | "       | 4370' |    |           |         |            |
| Simpson Sand  | "       | 4382' |    |           |         |            |
| Arbuckle Lime | "       | 4453' |    |           |         |            |

Describe in detail the manner in which the well was plugged, indicating where the mud fluid was placed and the method or methods used in introducing it into the hole. If cement or other plugs were used, state the character of same and depth placed, from... feet to... feet for each plug set.

50 Sacks of cement 4460' to 4275'  
Mud laden fluid 4275' to 250'  
Wood plug & 15 sacks of cement 250' to 194'  
Mud laden fluid 194' to 35'  
Wood plug & 10 sacks of cement 35' to 6'  
Surface soil 6' to 0.

PLUGGING  
TWP 25S RGE 15W  
BOOK PAGE 39 LINE 19

JAN 30 1946  
1-30-46

(If additional description is necessary, use BACK of this sheet)

Correspondence regarding this well should be addressed to Skelly Oil Company  
Address Box 391, Hutchinson, Kansas

STATE OF KANSAS, COUNTY OF RENO, ss.  
H. E. Wamsley (employee of owner) of the above-described well,

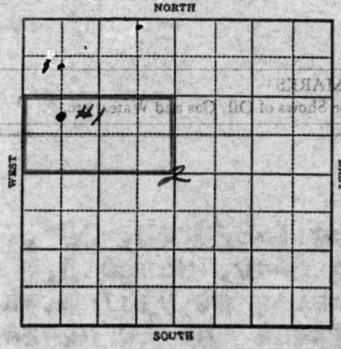
being first duly sworn on oath, says: That I have knowledge of the facts, statements and matters herein contained and the log of the above-described well as filed and that the same are true and correct. So help me God.

(Signature) [Signature]  
Box 391, Hutchinson, Kansas (Address)

SUBSCRIBED AND SWORN to before me this 29th day of January, 1946.

My commission expires April 7, 1947. [Signature] Notary Public.

# SKELLY OIL COMPANY



**WELL RECORD**

Lease Name and No. Helle May Daniel Well No. 1 Elev. 2019'

Lease Description 3/2 NW/4 Sec. 2-25E-15N, Stafford County, Kansas

Location made Dec. 1 1945 by Barton County Engineer

330 feet from North line 660 feet from East line } of 3/2 NW/4

660 feet from South line 660 feet from West line } of Sec. 2

Work com'd. 12-6 1945 Rig comp'd. 12-7 1945 Drlg. com'd. 12-9 1945 Drlg. comp'd. 1-1 1946

Rig Contractor Parker Drilling Company

Drilling Contractor Parker Drilling Company, Tulsa, Oklahoma

Rotary Drilling from Top to 4460' Cable Tool Drilling from \_\_\_\_\_ to \_\_\_\_\_

Commenced Producing Dry Hole 1945 { Initial Prod. before shot or acid \_\_\_\_\_ Bbls.

{ Initial Prod. after shot or acid \_\_\_\_\_ Bbls.

Dry Gas Well Press. \_\_\_\_\_ Volume \_\_\_\_\_ Cu. ft.

Casing Head Gas Pressure \_\_\_\_\_ Volume \_\_\_\_\_ Cu. ft.

Braden Head ( \_\_\_\_\_ Size ) Gas Pressure \_\_\_\_\_ Volume \_\_\_\_\_ Cu. ft.

Braden Head ( \_\_\_\_\_ Size ) Gas Pressure \_\_\_\_\_ Volume \_\_\_\_\_ Cu. ft.

PRODUCING FORMATION Dry Hole (Name) Top \_\_\_\_\_ Bottom \_\_\_\_\_ TOTAL DEPTH 4460'

### CASING RECORD

| Size                                       | Wt.       | Thds.       | Where Set   | PULLED OUT |      |    | LEFT IN   |            |          | KIND                | Cond'n     | CEMENTING          |                 |
|--|-----------|-------------|-------------|------------|------|----|-----------|------------|----------|---------------------|------------|--------------------|-----------------|
|  |           |             |             | Jts.       | Feet | In | Jts.      | Feet       | In       |                     |            | Sacks Used         | Method Employed |
| <u>8-5/8" OD 28 3/4</u>                    | <u>88</u> | <u>958'</u> | <u>958'</u> |            |      |    | <u>22</u> | <u>958</u> | <u>3</u> | <u>M40 R3 NEW A</u> | <u>350</u> | <u>Halliburton</u> |                 |
| <u>(8-5/8" OD casing set 6' in cellar)</u> |           |             |             |            |      |    |           |            |          |                     |            |                    |                 |
|  |           |             |             |            |      |    |           |            |          |                     |            |                    |                 |
|  |           |             |             |            |      |    |           |            |          |                     |            |                    |                 |
|  |           |             |             |            |      |    |           |            |          |                     |            |                    |                 |
|  |           |             |             |            |      |    |           |            |          |                     |            |                    |                 |
|  |           |             |             |            |      |    |           |            |          |                     |            |                    |                 |
|  |           |             |             |            |      |    |           |            |          |                     |            |                    |                 |

Liner Set at \_\_\_\_\_ Length \_\_\_\_\_ Perforated at \_\_\_\_\_

Liner Set at \_\_\_\_\_ Length \_\_\_\_\_ Perforated at \_\_\_\_\_

Packer Set at \_\_\_\_\_ Size and Kind \_\_\_\_\_

Packer Set at \_\_\_\_\_ Size and Kind \_\_\_\_\_

### SHOT OR ACID TREATMENT RECORD

|                                     | FIRST   |     | SECOND  |     | THIRD   |     | FOURTH  |     |
|-------------------------------------|---------|-----|---------|-----|---------|-----|---------|-----|
| Date                                |         |     |         |     |         |     |         |     |
| Acid Used                           |         |     |         |     |         |     |         |     |
| Size Shot                           |         |     |         |     |         |     |         |     |
| Shot Between                        | Ft. and | Ft. | Ft. and | Ft. | Ft. and | Ft. | Ft. and | Ft. |
| Size of Shell                       |         |     |         |     |         |     |         |     |
| Put in by (Co.)                     |         |     |         |     |         |     |         |     |
| Length anchor                       |         |     |         |     |         |     |         |     |
| Distance below Cas'g                |         |     |         |     |         |     |         |     |
| Damage to Casing or Casing Shoulder |         |     |         |     |         |     |         |     |

### SIGNIFICANT GEOLOGICAL FORMATIONS

| NAME                 | Top          | Bottom | GAS  |    | OIL  |    | REMARKS |
|----------------------|--------------|--------|------|----|------|----|---------|
|                      |              |        | From | To | From | To |         |
| <u>Lanag Line</u>    | <u>3746'</u> |        |      |    |      |    |         |
| <u>Viola Line</u>    | <u>4259'</u> |        |      |    |      |    |         |
| <u>Simpson Shale</u> | <u>4370'</u> |        |      |    |      |    |         |
| <u>Simpson Sand</u>  | <u>4382'</u> |        |      |    |      |    |         |
| <u>Arbuckle Line</u> | <u>4453'</u> |        |      |    |      |    |         |
|                      |              |        |      |    |      |    |         |
|                      |              |        |      |    |      |    |         |
|                      |              |        |      |    |      |    |         |

### CLEANING OUT RECORDS

|      | DATE COMMENCED | DATE COMPLETED | PROD. BEFORE | PROD. AFTER | REMARKS                        |
|------|----------------|----------------|--------------|-------------|--------------------------------|
| 1st. |                |                |              |             | See Reverse for other details. |
| 2nd  |                |                |              |             | " " " " "                      |
| 3rd  |                |                |              |             | " " " " "                      |
| 4th  |                |                |              |             | " " " " "                      |

### PLUGGING BACK AND DEEPENING RECORDS

|     | Date Commenced | Date Completed | No. Feet Plugged Back or Deepened | Prod. Before | Prod. After | REMARKS                        |
|-----|----------------|----------------|-----------------------------------|--------------|-------------|--------------------------------|
| 1st |                |                |                                   |              |             | See Reverse for other details. |
| 2nd |                |                |                                   |              |             | " " " " "                      |
| 3rd |                |                |                                   |              |             | " " " " "                      |
| 4th |                |                |                                   |              |             | " " " " "                      |

(See Reverse for Record of Formation)



| FORMATION                         | TOP  | BOTTOM | REMARKS   |
|-----------------------------------|------|--------|---|
|                                   |      |        |   |
| Shale and shells                  | 0    | 925    | Liner Name and No. _____<br>Liner Description _____<br>Set and cement 5-2/2" 281, 282, 283 sh., Grade 2-40, Range 3, 3" 189 to 295' to casing 189' to 350' sacks of cement and 10 sacks of grout. |
| bed                               | 925  | 957    |   |
| Anhydrite                         | 957  | 958    |   |
|                                   | 958  | 955    |   |
|                                   | 955  | 1280   |   |
| Shale and shells                  | 1280 | 1340   |   |
| Shale                             | 1340 | 1650   |   |
| Shale and shells                  | 1650 | 1875   |   |
| Lime                              | 1875 | 2450   |   |
| Lime and shale                    | 2450 | 2736   |   |
| Shale and broken lime             | 2736 | 2997   |   |
| Lime                              | 2997 | 4103   |   |
| Lime and chert                    | 4103 | 4263   |   |
| Lime                              | 4263 | 4299   |   |
| Lime, shale and chert             | 4299 | 4382   |   |
| White, fine to medium grain, sand | 4382 | 4407   |   |
| Lime, sand & chert                | 4407 | 4416   |   |
| Lime                              | 4416 | 4453   |   |
| Grey coarse crystalline dolomite  | 4453 | 4460   |   |

|             |       |
|-------------|-------|
| TOTAL DEPTH | 4460' |
|-------------|-------|

Since the well was 35 feet lower than lowest producer in this area, and approximately 30 feet below water table, recommendation was made and regular authority granted on January 2, 1946, to plug and abandon.

On January 2, 1946, the well was plugged as follows:

|                    |               |
|--------------------|---------------|
| Surface soil       | 0 to 16'      |
| 50 sacks of cement | 16' to 191'   |
| bluff nodal mud    | 191' to 250'  |
| bluff nodal mud    | 250' to 295'  |
| 50 sacks of cement | 295' to 4460' |

SHOT OR ACID TREATMENT RECORD

| DATE | SIZE | DEPTH | RESULTS |
|------|------|-------|---------|
|      |      |       |         |
|      |      |       |         |
|      |      |       |         |
|      |      |       |         |

| NAME | DEPTH | RESULTS | REMARKS |
|------|-------|---------|---------|
|      |       |         |         |
|      |       |         |         |
|      |       |         |         |
|      |       |         |         |

CLEANING OUT RECORDS

|                |              |             |         |
|----------------|--------------|-------------|---------|
| DATE COMPLETED | PROD. BEFORE | PROD. AFTER | REMARKS |
|                |              |             |         |

PLUGGING BACK AND DEEPENING RECORDS

|                |              |             |         |
|----------------|--------------|-------------|---------|
| DATE COMPLETED | PROD. BEFORE | PROD. AFTER | REMARKS |
|                |              |             |         |

PLUGGING  
 FILT. 3 25 15W  
 BOOK PAGE 39  
 19