

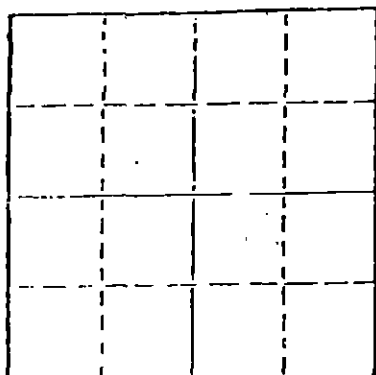
STATE OF KANSAS  
STATE CORPORATION COMMISSION

15-047-10067-0000

WELL PLUGGING RECORD

Give All Information Completely  
Make Required Affidavit  
Mail or Deliver Report to  
Conservation Division  
State Corporation Comm.  
245 North Water  
Wichita, KS 67202

Edwards County. Sec. 27 Twp. 25 Rge. 16 E/W  
Location as "NE/CNW 1/4 SW 1/4" or footage from lines \_\_\_\_\_  
App. C-5/2 SW  
Lease Owner Raymond Oil Co., Inc.  
Lease Name Cudney B#3 Well No. \_\_\_\_\_  
Office Address Wichita, Kansas 67202  
Character of Well (Completed as Oil, Gas or Dry Hole) \_\_\_\_\_



Locate well correctly on above  
Section List

Date Well completed \_\_\_\_\_ 19\_\_\_\_  
Application for plugging filed \_\_\_\_\_ 19\_\_\_\_  
Application for plugging approved \_\_\_\_\_ 19\_\_\_\_  
Plugging commenced 2/15/79 \_\_\_\_\_ 19\_\_\_\_  
Plugging completed 2/15/79 \_\_\_\_\_ 19\_\_\_\_  
Reason for abandonment of well or producing formation  
depleted.  
If a producing well is abandoned, date of last production  
\_\_\_\_\_ 19\_\_\_\_

Was permission obtained from the Conservation Division or  
its agents before plugging was commenced? yes

Name of Conservation Agent who supervised plugging of this well Owens  
Producing formation \_\_\_\_\_ Depth to top \_\_\_\_\_ Bottom \_\_\_\_\_ Total Depth of Well 418  
Show depth and thickness of all water, oil and gas formations.

OIL, GAS OR WATER RECORDS

CASING RECORD

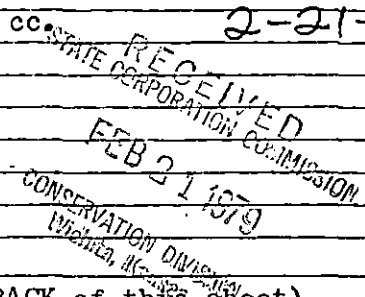
FORMATION	CONTENT	FROM	TO	SIZE	PUT IN	PULLED OUT
				8-5/8	417	none
				5 1/2"	265	none

Describe in detail the manner in which the well was plugged, indicating where the mud fluid  
was placed and the method or methods used in introducing it into the hold. If cement or other  
plugs were used, state the character of same and depth placed, from \_\_\_\_\_ feet to  
\_\_\_\_\_ feet for each plug set.

Pumped 5 sacks hulls, 20 sacks gel, 100 sacks 60/40 poz, 3% cc.

2-21-79

PLUGGING COMPLETE.



(If additional description is necessary, use BACK of this sheet)

Name of Plugging Contractor KELSO CASING PULLING  
CHASE, KANSAS

STATE OF KANSAS COUNTY OF RICE, ss.  
R. DARRELL KELSO (employee of owner) or (owner or operator)  
of the above-described well, being first duly sworn on oath, says: That I have knowledge of  
the facts, statements, and matters herein contained and the log of the above-described well  
as filed and that the same are true and correct. So help me God.

(Signature) R. Darrell Kelso  
CHASE, KANSAS

(Address)

SUBSCRIBED AND SWORN TO before me this 15th day of February, 1979

Margaret Melcher  
Notary Public.

My commission expires



*Dutch*  
15-047-10067-0000  
*File* SWD

SALT WATER DISPOSAL WELL REPORT

Date January 28, 1970

1. Operator Leben Drilling, Inc.
2. Address P.O.Box 486 Great Bend, Kansas
3. Location of well: SW 1/4 Sec. 27 Twn. 25S Rng. 16W, County Edwards
4. Lease Cudney "B" SWDW Kansas Corp. Comm. Docket No. 71,066-C (C-10,121)
5. Ground surface elevation 2072'
6. Disposal formation Cheyenne Depth of perforations 280'-330'
7. Volume of fluid injected: 1500 bbls. per month. Maximum per day: 100 bbls.
8. Wellhead pressure: 1. Maximum 0 PSIG. 2. Is pressure used continuously?
3. If not, explain:
4. Pressure history (increase or decrease of pressure requirement with age of well):
5. Maintenance requirements necessary to keep disposal formation open. If a prescribed maintenance procedure is followed, please describe: Periodic acid treatments
9. Well construction: 1. Casing and cementing record:       
8 5/8" casing @ 417 1/2' cemented w/225 sxs. . Cemented to surface
2. Tubing (size and type): 2 3/8" tubing  
Packer (type and depth set): None
3. Annulus: Type of fluid oil Pressure gauge?
10. Disposal formation fluid: 1. Static level of fluid in hole (feet below surface):       
110' from surface Date measured 4-13-63
2. Quality of disposal formation fluid (attach copy of chemical analysis, if available):  
None available
11. Is an electric or nuclear log available which includes the interval from the ground surface to the base of the disposal interval? yes
12. Supplemental information

RECEIVED

STATE CORPORATION COMMISSION

hereby certify that the above information is true and correct to the best of my knowledge and belief.

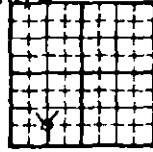
DEC 13 1978  
12-13-78  
CONSERVATION DIVISION  
Wichita, Kansas

By J. L. Wright J. L. Wright  
Title Kansas Production Manager

*Approx C 5/2 SW. 27.25S.16W  
Leben #3 Cudney "B"*

15-047-10067-0000

4-342 MAP NO. FR & COMP SEC. 27-25S-16W  
 STATE Kans COUNTY Edwards LOC. App C S/2 SW  
 OPER. Leben Drlg., Inc., Wichita, Kansas 1260 FT/FR S LINE  
 WELL 3 FARM Cudney "B" 850 FT/FR E LINE  
 POOL Will ELEV. None GR. None DF. None KB  
 CONT. Rosencrantz-Bemis Drlg. GEOL. \_\_\_\_\_ of SW/4  
 CO. \_\_\_\_\_  
 INT. \_\_\_\_\_  
 F.R. 4-18-63 SPUD 4-10-63 COMP. 4-30-63  
 TD. 418 FM. No tops PBD. \_\_\_\_\_  
 COMP. RECORD 8 5/8" @ 417/225 sx.  
SWDW in Perfs 280-330



*Data Inc.*

No Tops Called  
 RTD 418

RTD 418, Log, Perf 100/280-330, 250 MA, Ran 2" tbg, Completed  
 As SWDW in Perfs 280-330, Injection Rate Satisfactory,  
 COMPLETED

RECEIVED  
STATE COOPERATION COMMISSION

DEC 13 1978 12-13-78

CONSERVATION DIVISION  
Wichita, Kansas