

STATE OF KANSAS
STATE CORPORATION COMMISSION

WELL PLUGGING RECORD

Give All Information Completely
Make Required Affidavit
Mail or Deliver Report to:
Conservation Division
State Corporation Commission
800 Bittling Building
Wichita, Kansas

Reno County. Sec. 34 Twp 25S Rge. (E) 4 (W)

Location as "NE/CNW/SW" or footage from lines NW/4 NW/4 SW/4

Lease Owner Skelly Oil Company

Lease Name Ruth M. Newby Well No. 2

Office Address Box 1650, Tulsa, Oklahoma

Character of Well (completed as Oil, Gas or Dry Hole) Oil

Date well completed May 10, 1949

Application for plugging filed December 2, 1952

Application for plugging approved December 4, 1952

Plugging commenced December 1, 1952

Plugging completed December 9, 1952

Reason for abandonment of well or producing formation Depleted Oil Well

If a producing well is abandoned, date of last production November 4, 1952

Was permission obtained from the Conservation Division or its agents before plugging was commenced? Yes (verbally)

Name of Conservation Agent who supervised plugging of this well Mr. Ruel Durkee

Producing formation Viola Lime Depth to top 4098 1/2' Bottom 4101' Total Depth of Well 4101' Feet

Show depth and thickness of all water, oil and gas formations.

OIL, GAS OR WATER RECORDS

CASING RECORD

Formation	Content	From	To	Size	Put In	Pulled Out
Viola Lime	Oil	4098 1/2'	4101'	8-5/8"	360' 0"	None
				5-1/2"	4130' 0"	3392'

Describe in detail the manner in which the well was plugged, indicating where the mud fluid was placed and the method or methods used in introducing it into the hole. If cement or other plugs were used, state the character of same and depth placed, from _____ feet to _____ feet for each plug set.

Sand 4101' to 4090'
 6 sacks of cement 4090' to 4020'
 Mud laden fluid 4020' to 300'
 Rock bridge 300' to 285'
 15 sacks of cement 285' to 235'
 Mud laden fluid 235' to 20'
 5 sacks of cement 20' to 6'
 Surface soil 6' to 0'

RECEIVED
 12-24-52

(If additional description is necessary, use BACK of this sheet)

Correspondence regarding this well should be addressed to Skelly Oil Company
Address Box 391
Hutchinson, Kansas

STATE OF Kansas, COUNTY OF Reno, ss.
H. E. Wamsley (employee of owner)

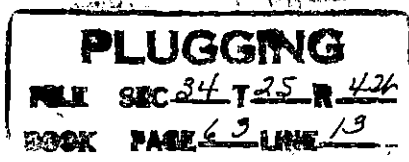
being first duly sworn on oath, says: That I have knowledge of the facts, statements, and matters herein contained and the log of the above-described well as filed and that the same are true and correct. So help me God.

(Signature) [Signature]
Box 391, Hutchinson, Kansas (Address)

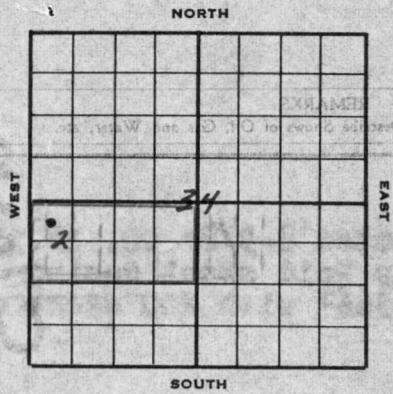
SUBSCRIBED AND SWORN to before me this 23rd day of December, 1952

[Signature] Notary Public

My commission expires April 7, 1955



SKELLY OIL COMPANY



Well Record

Lease Name and No. Ruth M. Newby Well No. 2 Elev. 1544' BH
1550' DF
 Lease Description N/2 SW/4 section 34-253-4N,
Reno County, Kansas

Location made April 8, 1949 by H. V. Morse
330 feet from North line 330 feet from East line
330 feet from South line 330 feet from West line of Sec. 34

Work com'd 4/13 1949 Rig comp'd 4/13 1949 Drlg. com'd 4/13 1949 Drlg. comp'd 5/5 1949

Rig Contractor Overland Drilling Company

Drilling Contractor Overland Drilling Company, Tulsa, Oklahoma

Rotary Drilling from Top to 4101' SLM Cable Tool Drilling from To complete to

Commenced Producing May 10, 1949 Initial Prod. before shot or acid Swabbed 5 hrs., 50 Bbls.

Initial Prod. after shot or acid POB 8 hrs, 50 BO 116 BW Bbls.

Dry Gas Well Press 330 Volume 300 physical pot. 150 bbls. Cu. ft.

Casing Head Gas Pressure 330 Volume Cu. ft.

Braden Head (8-5/8" 35' OD) Gas Pressure Volume Cu. ft.

Braden Head () Gas Pressure Volume Cu. ft.

PRODUCING FORMATION Viola Line (Name) Top 4098 1/2' Bottom 4101' TOTAL DEPTH 4101' SLM

CASING RECORD

OD	Size	Wt.	Thds.	Where Set	PULLED OUT			LEFT IN			KIND	Cond'n	Sacks Used	CEMENTING Method Employed
					Jts.	Feet	In.	Jts.	Feet	In.				
8-5/8"	28 1/2	28 1/2	366'	(Lot #5)	17	360	0	17	360	0	R2 LW	A	200	Halliburton
5-1/2"	15 1/2	15 1/2			63	2022	0	63	2022	0	R2 SS	A		
5-1/2"	15 1/2	15 1/2		(Lot #54)	2	66	0	2	66	0	R2 SS	A		
5-1/2"	15 1/2	15 1/2			57	1867	6	57	1867	6	R2 SS	C		
5-1/2"	15 1/2	15 1/2			3	93	0	3	93	0	R2 SS	B		
5-1/2"	15 1/2	15 1/2		4098 1/2' (Lot #76)	3	82	0	3	82	0	R2 SS	A	125	Halliburton
(8-5/8" OD casing set 6' in collar and 5 1/2' cased to derrick floor)														
Used 1 - 5 1/2" OD Baker Combination Guide & Float Shoe														

Liner Set at Length Perforated at

Liner Set at Length Perforated at

Packer Set at Size and Kind

Packer Set at Size and Kind

SHOT OR ACID TREATMENT RECORD

Date	FIRST		SECOND		THIRD		FOURTH	
	Ft. and	Ft.	Ft. and	Ft.	Ft. and	Ft.	Ft. and	Ft.
Acid Used	Gals. Qts.		Gals. Qts.		Gals. Qts.		Gals. Qts.	
Size Shot	Gals. Qts.		Gals. Qts.		Gals. Qts.		Gals. Qts.	
Shot Between	Gals. Qts.		Gals. Qts.		Gals. Qts.		Gals. Qts.	
Size of Shell	Gals. Qts.		Gals. Qts.		Gals. Qts.		Gals. Qts.	
Put in by (Co.)	Gals. Qts.		Gals. Qts.		Gals. Qts.		Gals. Qts.	
Length anchor	Gals. Qts.		Gals. Qts.		Gals. Qts.		Gals. Qts.	
Distance below Cas'g	Gals. Qts.		Gals. Qts.		Gals. Qts.		Gals. Qts.	
Damage to Casing or Casing Shoulder	Gals. Qts.		Gals. Qts.		Gals. Qts.		Gals. Qts.	

PLUGGING
 PKI SEC 34 T 25 R 4A
 BOOK PAGE 63 LINE 13

SIGNIFICANT GEOLOGICAL FORMATIONS

NAME	Top	Bottom	GAS		OIL		REMARKS
			From	To	From	To	
Leasing Line	2859'						
Mississippi Line	3648'						
Kinderhook shale	3953' SLM						
Viola Line	4098' SLM			4098'	4101'	Good per., slight odor and slight show of live oil	

CLEANING OUT RECORDS

	DATE COMMENCED	DATE COMPLETED	PROD. BEFORE	PROD. AFTER	REMARKS
1st					See Reverse for other details.
2nd					" " " " "
3rd					" " " " "
4th					" " " " "

PLUGGING BACK AND DEEPENING RECORDS

	Date Commenced	Date Completed	No. Feet Plugged Back or Deepened	Prod. Before	Prod. After	REMARKS
1st						See Reverse for other details.
2nd						" " " " "
3rd						" " " " "
4th						" " " " "

(See Reverse for Record of Formation)

12-122-02712-0000

RECORD OF FORMATIONS

FORMATION	TOP	BOTTOM	REMARKS
Surface clay and red bed	0	55	
Sand	55	70	
Shale and shells	70	366	
Shale and shells	366	460	
Shale and salt	460	675	
Shale and lime	675	1185	
Lime	1185	1370	
Shale and shells	1370	2160	
Shale and lime	2160	2290	
Lime	2290	2440	
Lime and shale	2440	2545	
Lime	2545	2670	
Lime and shale	2670	2765	
Shale and shells	2765	2880	
Shale and lime	2880	2940	
Lime	2940	3260	
Shale and lime	3260	3715	
Lime and chert	3715	3730	
Lime, chert and shale	3730	3750	
Shale and chert	3750	3771	
Shale and cherty lime	3771	3800	
Lime	3800	3810	
Shale and lime	3810	3836	
Cherty lime	3836	3870	
Shale and chert	3870	3913	
Lime and chert	3913	3937	
Lime and shale	3937	3958	
Lime and chert	3958	3975	
Shale	3975	4101	
Buff crystalline dolomite	4101	4104	

Set and cemented 8-5/8" OD, 28.55' P.S., R-2, Lap weld steel casing (Lot #5) at 366' with 200 sacks of cement.

TOP LANSING LIME 2880'

TOP MISSISSIPPI LIME 3648'

TOP KINDERHOOK SHALE 3953' SLM

TOP VIOLA LIME 4098' SLM

Good porosity, slight odor and slight show of live oil. Set and cemented 66' of 5 1/2" OD, 15.5#, 8R thd., J-55, R-2, S.S. casing (Lot #54); 82' of 5 1/2" OD, 15.5#, 8R thd., J-55, R-2, S.S. casing (Lot #76); 23' of 5 1/2" OD, 15.5#, 8R thd., J-55, R-2, S.S. casing (B cond.); 2,022' of 5 1/2" OD, 15.5#, 8R thd., J-55, R-2, S.S. casing (A cond.); and 1867' of 5 1/2" OD, 15.5#, 8R thd., J-55, R-2, S.S. casing (C cond.) at 4098' SLM with 125 sacks of cement. Finished cementing at 4:10 a.m. 4/6/49.

Rigged up cable tools and bailed the hole dry on May 8, and 5 1/2" casing tested OK. Drilled cement slurry and cleaned out to bottom. Correction: 4104' SLM rotary table and 4101' SLM derrick floor.

SLM	4104	4101	
TOTAL DEPTH		4101	

Hole filled 1600' with oil in 30 minutes, 2000' in 1 hour, and 3600' in 5 hours. Swabbed through 5 1/2" casing 5 hours, 50 barrels of oil and no water and swabbed 1200' from top of hole. Bailed hole clean and started showing water. Ran 2" tubing and rods and moved out cable tools to install pumping equipment and test.

Finished installing pumping equipment on May 20, and FOB 7 hours, 51 barrels of oil and 34 barrels of water, and engine threw belts off. Shut down and repaired pumping equipment. On May 23, FOB 18 hours, 65 barrels of oil and 10 barrels of water. On May 24, FOB 24 hours, 165 barrels of oil and 126 barrels of water. On May 25, FOB 24 hours, 210 barrels of oil and 136 barrels of water. On May 26, FOB 12 hours, 80 barrels of oil and 78 barrels of water. Shut down on May 27 and 28, to repair pumping equipment. On May 29, FOB 12 hours, 51 barrels of oil and 30 barrels of water. On May 30, FOB 24 hours, 75 barrels of oil and 75 barrels of water. On May 31, FOB 24 hours, 130 barrels of oil and 130 barrels of water.

On June 1, tried to take State Corporation Commission draw down potential test, draw down 3000' and well would not stabilize. FOB 8 hours, 50 barrels of oil and 116 barrels of water to establish 24 hour physical U.C.C. potential of 150 barrels. This potential allows 25 barrels per day for the remainder of June, 1949.

SLOPE TEST DATA: Tests were taken at 250' intervals from 250' to 3800' inclusive, with no variation from vertical noted.

May 17, 1949, water analysis of Viola Lime water: Hydrogen sulphide, none; specific gravity 1.042; solids 61,000 ppm; chlorides, 34,800 ppm; sulphates, 120 ppm; pH 8.0 ppm.

See Reverse for Record of Formations

REMARKS (Give review of work accomplished and any other comment of interest) On December 1, 1952, moved in tools of West Supply Company and plugged the well as follows:

Sand 4101' to 4090'
 6 sacks of cement 4090' to 4020'

Shot off 5 1/2" casing at 3400' and 3367', and pulled 107 joints (3392') of 5 1/2" OD, 15 1/2#, 8R thd., R-2, J-55, S.S. casing (3 cond.)

Mud laden fluid 4020' to 300'
 Rock bridge 300' to 285'
 15 sacks of cement 285' to 235'
 Mud laden fluid 235' to 20'
 5 sacks of cement 20' to 6'
 Surface soil 6' to 0'

Plugged and abandoned December 9, 1952.

RECORD OF FORMATIONS

FORMATION	TOP	BOTTOM	REMARKS
Indicate Casing Points. Describe Shows of Oil, Gas and Water, etc.			

12-51-52

SKELLY OIL COMPANY

REPORT OF CHANGE IN WELL RECORD

Give complete description of all cleaning out, deepening, plugging back and fishing jobs, changes in casing, material lost in hole, etc., not recorded in original well record.

LEASE R. M. Newby WELL NO. 2 DISTRICT Western Kansas

SEC. 34 T. 25S R. 4W COUNTY Reno 7105 JOB NO.

SURVEY _____ BLOCK _____ STATE Kansas

CLEANING OUT RECORD				PLUGGING BACK OR DEEPENING RECORD			
Date commenced.....	19.....	Date commenced.....	19.....	Date commenced.....	December 1,	19	52
Date completed.....	19.....	Date completed.....	19.....	Date completed.....	December 9,	19	52
Cleaned out from.....	to.....	T. D.....		Plugged back or deepened from.....	4101'	to.....	0' T.D. P & A
Prod. before.....	oil.....	bbls. water.....	cu. ft. gas	Prod. before.....	1 oil.....	bbls. 199 water.....	cu. ft. gas
Prod. after.....	oil.....	bbls. water.....	cu. ft. gas	Prod. after.....	oil.....	bbls. water.....	cu. ft. gas
Kind of tools used:.....				Kind of tools used:.....			
Tools owned by:				Tools owned by:	West Supply Company		

SHOT RECORD

Date	Size shot	Shot between	Size of shell	Put in by (Co.)	Length anchor	Distance below casing	Damage to casing or casing shoulder

CHANGES IN CASING RECORD

SIZE	Wt.	Thds.	Where Set	PULLED OUT			LEFT IN			KIND	Cond'n	CEMENTING	
				Jts.	Feet	In.	Jts.	Feet	In.			Sacks Used	Method Employed
5 1/2" OD	15 1/2	8R	4098'	107	3392'	21	738	0	J55 R2 8 1/2	B			

Liner set at..... Length..... Perforated at.....

Packer set at..... Size and kind.....

12-24-52

RECEIVED
CORPORATION COMMISSION
DEC 24 1952
CONSERVATION DIVISION
Wichita, Kansas

[Signature]

Superintendent.