

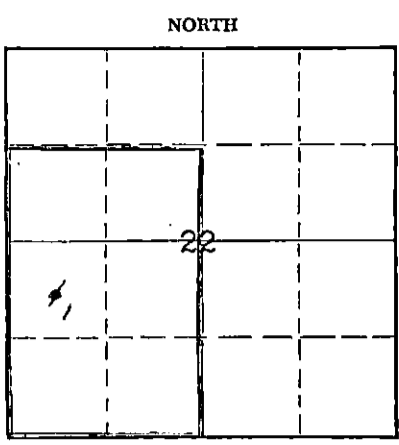
See

STATE OF KANSAS  
STATE CORPORATION COMMISSION

Give All Information Completely  
Make Required Affidavit  
File or Deliver Report to:  
Conservation Division  
State Corporation Commission  
211 No. Broadway  
Wichita, Kansas

15-119-00108-0000  
WELL PLUGGING RECORD

Meade County, Sec. 22 Twp. 32S Rge. (E) 30 (W)



Locate well correctly on above  
Section Plat

Location as "NE/CNW/SW" or footage from lines C NW/4 SW/4  
Lease Owner Skelly Oil Company  
Lease Name Anna Koehn Well No. 1  
Office Address P.O. Box 1650, Tulsa, Oklahoma  
Character of Well (completed as Oil, Gas or Dry Hole) Gas - Oil  
Date well completed February 20, 19 59  
Application for plugging filed May 13, 19 64  
Application for plugging approved May 15, 19 64  
Plugging commenced May 9, 19 64  
Plugging completed May 21, 19 64  
Reason for abandonment of well or producing formation Not profitable to operate

If a producing well is abandoned, date of last production May 8, 19 64  
Was permission obtained from the Conservation Division or its agents before plugging was commenced? Yes (verbally)

Name of Conservation Agent who supervised plugging of this well Mr. Hugh Scott  
Producing formation Morrow Depth to top 5548 Bottom Total Depth of Well 5685 Feet  
Show depth and thickness of all water, oil and gas formations. PB 5567'

OIL, GAS OR WATER RECORDS

CASING RECORD

FORMATION	CONTENT	FROM	TO	SIZE OD	PUT IN	PULLED OUT
Morrow	Gas-Oil	5551'	5555'	8-5/8"	1429'6"	None
				5-1/2"	5721'3"	2709'

Describe in detail the manner in which the well was plugged, indicating where the mud fluid was placed and the method or methods used in introducing it into the hole. If cement or other plugs were used, state the character of same and depth placed, from \_\_\_\_\_ feet to \_\_\_\_\_ feet for each plug set.

Sand	5567' to 5540'
20 sacks of cement	5540' to 5380'
Mud	5380' to 710'
Rock bridge	710' to 700'
30 sacks of cement	700' to 610'
Mud	610' to 55'
Rock bridge	55' to 45'
15 sacks of cement	45' to 8'
Surface soil	8' to Surface

RECEIVED  
STATE CORPORATION COMMISSION

JUN 15 1964  
6-15-1964

CONSERVATION DIVISION  
Wichita, Kansas

Name of Plugging Contractor Ace Pipe Pulling Company  
Address P.O. Box 304, Great Bend, Kansas

STATE OF Nebraska, COUNTY OF Red Willow, ss.  
C. F. Bass (employee of owner) or ~~owner or operator~~ of the above-described well, being first duly sworn on oath, says: That I have knowledge of the facts, statements, and matters herein contained and the log of the above-described well as filed and that the same are true and correct. So help me God.

(Signature) C F Bass  
P.O. Box 649, McCook, Nebr. 69001  
(Address)

SUBSCRIBED AND SWORN TO before me this 12th day of June 19 64

My commission expires June 13, 1969  
Notary Public.

# SKELLY OIL COMPANY

## CHANGE IN WELL RECORD

Give complete description of all cleaning out, deepening, plugging back and fishing jobs, changes in casing, material lost in hole, etc, not recorded in original well record.

LEASE NAME Anna Koehn #60652 WELL NO. 1 DISTRICT Platte  
 SEC. 22 T. 32S R. 30W COUNTY Neade AFE NO. 55002  
 BLOCK \_\_\_\_\_ SURVEY \_\_\_\_\_ STATE Kansas

### TYPE OF WORK PLUG AND ABANDON WELL

Date commenced May 9, 1964 Date completed May 21, 1964  
 Deepened from \_\_\_\_\_ to \_\_\_\_\_ Total Depth P & A  
 Plugged back from 5567' to Surface P.B.T.D. \_\_\_\_\_  
 Cleaned out from \_\_\_\_\_ to \_\_\_\_\_  
 Production before 2.4 bbls. oil 21.9 bbls. water \_\_\_\_\_ cu. ft. gas.  
 Production after \_\_\_\_\_ bbls. oil \_\_\_\_\_ bbls. water \_\_\_\_\_ cu. ft. gas.  
 Tools owned by; Ace Pipe Pulling Co. Kind used; Hyd. Jacks No. days rig time; \_\_\_\_\_  
 Cost of Job \$ \_\_\_\_\_ Revised Estimated Payout (Mos.) \_\_\_\_\_

### TREATMENT RECORD

DATE	TYPE TREATMENT	INTERVAL TREATED	AMOUNT OF TREATMENT

### CHANGES IN CASING RECORD

STRINGS	SIZE	WHERE SET (Depth)	CEMENTING RECORD		REMARKS
			Sacks Used	Top Cem't. Bh'd. Casg.	
Production					
Liner					Top liner;

SIZE	WT.	THDS.	KIND	COND.	LEFT IN				PULLED OUT					
					Jts.	Feet	LTM	In.	Feet	WTM	In.	Jts.	Feet	LTM
5-1/2	158	8H	J55 R2 SS	C	59	1817	8	1832	5	33	1003	4	1011	7
5-1/2	147	8H	J55 R2 SS	C	36	1166	0	1179	3	53	1689	0	1698	0

### PRODUCING FROM

FORMATION \_\_\_\_\_ thru OPEN HOLE PERFORATIONS \_\_\_\_\_ TOP \_\_\_\_\_ BOTTOM \_\_\_\_\_ Total No. Shots \_\_\_\_\_

REMARKS (Give review of work performed and any other comment of interest)

As the well was no longer profitable to operate, regular authority was granted to plug and abandon the well and lease.

Moved in and rigged up pulling unit of Pratt Well Service May 9, 1964, and pulled rods and tubing. Moved out pulling unit 5/10/64.

May 11, 1964, moved in and rigged up pulling machine of Ace Pipe Pulling Company and plugged the well as follows:

Sand 5567' to 5540'  
 20 sacks of cement 5540' to 5380'

Shot 5 1/2" casing at 4413' and 4320'. Spotted 30 barrels oil behind 5 1/2" casing and displaced with 158 barrels water. Worked casing with 36" tension and pulled casing up 5'. Shot casing at 4130', 3940', 3426', 2920', 2810' and 2685' and pulled 2709' of 5 1/2" casing.

Mud 5380' to 710'  
 Rock bridge 710' to 700'  
 30 sacks of cement 700' to 610'  
 Mud 610' to 55'  
 Rock bridge 55' to 45'  
 15 sacks of cement 45' to 8'  
 Surface soil 8' to Surf.

Plugged and abandoned May 21, 1964.

RECEIVED  
 STATE CORPORATION COMMISSION

JUN 15 1964

CONSERVATION DIVISION  
 Wichita, Kansas



Line 5640 5673  
 Line and chert 5673 5685 Ran Schlumberger Survey

Ran Halliburton drill stem test No. 3, packer set at 5644', used 41' anchor, open 1 hour, weak blow throughout test, recovered 20' drilling mud, IBHP-130' in 20 minutes, IVP-35', FFP-45', FEHP-80' in 20 mins.

Set and cemented 5721'3" of 5 1/2" OB casing at 5684' with 200 sacks of common cement and 300 gallons of Dowell Cement. Fin. 3:00 a.m. 1/13/59.

TOTAL DEPTH 5685'

Rigged up cable tools and swabbed the hole dry on January 29. Ran McCullough Gamma Ray Neutron Collar Locator Survey and found plugged back total depth 5650'.

Casing Perforation No. 1 - Chester - 5611' to 5616'  
 5611'-5616' 20 M-3 holes

Gas gauged 21 MCF with 10 gallons of oil per hour. Treated through 5 1/2" casing with 500 gallons of Dowell mud acid as follows:

TREATMENT NO. 1 - Acidized between 5611' and 5616'

Treatment put in 1/30/59 by Dowell, using 500 gallons of acid and 141 barrels of water.

TIME	CP	IP	REMARKS
2:35 pm			Started acid
2:37 pm			Acid in, start flush
2:53 pm	200'		
3:33 pm	600'		
3:42 pm	450'		
3:45 pm	600'		
4:10 pm	800'		
4:23 pm	800'		
4:35 pm	800'		Treatment completed

RECEIVED  
 STATE CORPORATION COMMISSION

JUN 15 1964

CONSERVATION DIVISION  
 Wichita, Kansas

Swabbed out fluid used in treating, then bailed and tested 7 hours, gas gauged 25 MCF with 8 gallons of oil per hour, no water. Bailed and tested 10 hours on January 31, 8 gallons of oil, no water per hour, gas gauged 60 MCF.

Ran Dowell Acid-Frac through 5 1/2" casing as follows:

TREATMENT NO. 2 - Acid-Frac between 5611' and 5616'

Used 1000 gallons gelled acid  
 500' sand  
 Maximum CP-1900', minimum CP-1800'  
 Time 6 minutes  
 Used 140 barrels water to flush  
 Injection rate: 12 barrels per minute

Swabbed out fluid used in treating, then bailed and tested 5 hours, 54 gallons of oil and treating water per hour, gas too small to gauge. On February 1, bailed and tested 24 hours, 10 gallons of oil per hour, no water, gas gauged 60 MCF (oil 33° gravity). On February 2, bailed and tested 3 hours, 10 gallons of oil per hour, no water, gas gauged 60 MCF.

Set Baker bridging plug at 5580' and plugged back with 3 gallons of cement from 5580' to 5577'.

Casing Perforation No. 2 - Morrow - 5560' to 5562'  
 5560'-5562' 8 M-3 shots

Tested 10 hours, 70 gallons of salt water per hour, very light show of oil, and very light show of gas. Ran 2" tubing and set Halliburton DM retainer at 5540'. Cemented off perforations from 5560' to 5562' with 150 sacks of common cement, maximum IP-2200'. Pulled 2" tubing and shut down for cement to set.

On February 6, swabbed the hole dry to top of retainer at 5540'. Drilled cement plug and cleaned out to 5567'.

PLUGGED BACK TOTAL DEPTH 5567'

Casing Perforation No. 3 - Morrow - 5551' to 5555'  
 5551'-5555' 16 holes

Tested 11 hours, gas gauged 2,740 MCF, no water. Ran Dowell Petro-Frac treatment as follows:



TREATMENT NO. 3 - Petro-Frac Between 5551' and 5555'

Used 50 gallons of Howell mud acid  
 1000 gallons of gelled diesel fuel  
 400# of sand  
 Maximum CP-2000#, minimum CP-900#  
 Time 6 minutes  
 Injection rate: 4 barrels per minute  
 Used 135 barrels of water to flush

Swabbed out fluid used in treating and well started flowing.  
 Flowed through 5 1/2" casing 1 1/2 hours, gas gauged 15,800 MCF with  
 light stain of oil and diesel fuel. Shut in 7 hours, SI CP-1625#.

On February 10, loaded hole with 130 barrels of water and 50  
 barrels of condensate. Ran 2" tubing with mud anchor. Swabbed  
 through 2" tubing 2 hours, and well started flowing. Flowed  
 through 2" tubing 2 hours, gas too wet to gauge. Then flowed  
 through 2" tubing 4 hours, gas gauged 5,450 MCF, FCP-1200# with  
 heavy water spray, water used to load hole.

On February 14, after being shut in 48 hours, SI CP-1650#.  
 Flowed through 2" tubing and 5 1/2" casing through two 2" outlets  
 1 hour to clean up hole, then shut casing outlets and flowed  
 through 2" tubing 2 1/2 hours, gas gauged 8,300 MCF, FCP-1050#.

On February 20, SI CP-1609# deadweight. Flowed through 2"  
 tubing 4 hours to stabilize well; then flowed 5 hours through  
 2" tubing, gas gauged 9,005 MCF, FCP-1140#. Calculated absolute  
 open flow 16,388 MCF.

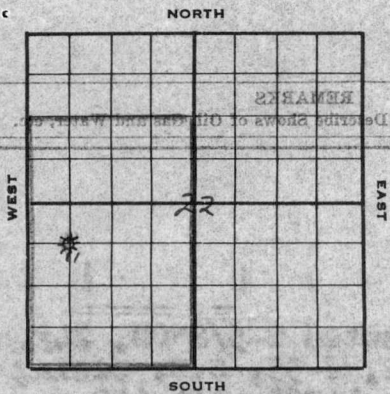
SLOPE TEST DATA

<u>DEPTH</u>	<u>ANGL. OF DEFLECTION</u>
500'	1/4 Degree
700'	1/4 "
1224'	1/4 "
2560'	1/2 "
3140'	1/4 "
4184'	1 "
4387'	1/4 "
4521'	1/2 "
4637'	3/4 "
4770'	3/4 "
4925'	1/2 "
5119'	1/2 "
5319'	3/4 "

UNIVERSITY OF KANSAS  
 COMPARISON DIVISION  
 WICHITA, KANSAS



# SKELLY OIL COMPANY



FORMATION 2755' DP  
2748' CR  
2745' BH

**Well Record**

Lease Name and No. Anna Koehn Well No. 1 Elev. \_\_\_\_\_

Lease Description SW/4 and So. 79 acres of NW/4 Sec. 22-32S-30W, Meade Co., Kans. (239 Acres)

Location made Nov. 13, 1958 by W. C. Wilson

\_\_\_\_\_ feet from North line \_\_\_\_\_ feet from East line

\_\_\_\_\_ feet from South line 660 feet from West line of Sec. 22

Work com'd 11/25 58 Rig comp'd 11/27 58 Drlg. com'd 11/27 58 Drlg. comp'd 1/11 59

Rig Contractor Claude Wentworth Drilling Co., Inc.

Drilling Contractor Claude Wentworth Drilling Co., Inc., Tulsa, Oklahoma

Rotary Drilling from 0' to 5685' Cable Tool Drilling from To complete to \_\_\_\_\_

Completed: February 20, 1959

Commenced Producing \_\_\_\_\_ 19 \_\_\_\_\_

Dry Gas Well Press. SI CP-1609, FCP-1140 Volume 16,388,000 Cu. ft.

Casing Head Gas Pressure \_\_\_\_\_ Volume \_\_\_\_\_ Cu. ft.

Braden Head ( \_\_\_\_\_ Size ) Gas Pressure \_\_\_\_\_ Volume \_\_\_\_\_ Cu. ft.

Braden Head ( \_\_\_\_\_ Size ) Gas Pressure \_\_\_\_\_ Volume \_\_\_\_\_ Cu. ft.

PRODUCING FORMATION Morrow (Name) Top 5551' Bottom 5555' TOTAL DEPTH 5685'

### CASING RECORD

OD	Size	Wt.	Thds.	Where Set	PULLED OUT			LEFT IN			KIND	Cond'n	CEMENTING	
					Jts.	Feet	In.	Jts.	Feet	In.			Sacks Used	Method Employed
8-5/8"	24	8R	1428				46	1429	6	J55 R2 S3 A	A	900	Hallib.	1418'
5-1/2"	15 1/2	8R					59	1832	5	J55 R2 S3 A	A			1817' 8"
5-1/2"	14 1/2	8R					89	2877	3	J55 R2 S3 A	A			2855' 0"
5-1/2"	15 1/2	8R	5684'				33	1011	7	J55 R2 S3 A	A	200	Hallib.	1003' 4"

(8-5/8" casing set 3' below ground, and 5' cased 1' below ground)

5 1/2" casing perforations open:

Above FB ID: 5551'-5555' with 16 holes

Below FB ID: 5611'-5616' with 20 holes

RECEIVED  
STATE CORPORATION COMMISSION

JUN 15 1964

CONSERVATION DIVISION  
Wichita, Kansas

Liner Set at \_\_\_\_\_ Length \_\_\_\_\_ Perforated at \_\_\_\_\_

Liner Set at \_\_\_\_\_ Length \_\_\_\_\_ Perforated at \_\_\_\_\_

Packer Set at \_\_\_\_\_ Size and Kind \_\_\_\_\_

Packer Set at \_\_\_\_\_ Size and Kind \_\_\_\_\_

### SHOT OR ACID TREATMENT RECORD

	FIRST	SECOND	THIRD	FOURTH
Date	<u>1/30/59</u>	<u>1/31/59</u>	<u>2/7/59</u>	
Acid Used				
Size Shot	<u>500</u>			
Shot Between	<u>5611 Ft. and 5616 Ft.</u>	<u>5611 Ft. and 5616 Ft.</u>	<u>3551 Ft. and 3555 Ft.</u>	
Size of Shell				
Put in by (Co.)	<u>Dowell</u>	<u>Dowell</u>	<u>Dowell</u>	
Length anchor				
Distance below Cas'g		<u>Acid-Frac</u>	<u>Petro-Frac</u>	
Damage to Casing or Casing Shoulder				

### SIGNIFICANT GEOLOGICAL FORMATIONS

NAME	Top	Bottom	GAS		OIL		REMARKS
			From	To	From	To	
Rebner Shale	<u>4360'</u>						
Lansing Lime	<u>4480'</u>						
Marnaton Lime	<u>5094'</u>						
Cherokee	<u>5276'</u>						
Morrow Shale	<u>5548'</u>						
Morrow Sand	<u>5552'</u>		<u>5551'</u>	<u>5555'</u>			
Chester Lime	<u>5574'</u>						

### CLEANING OUT RECORDS

	DATE COMMENCED	DATE COMPLETED	PROD. BEFORE	PROD. AFTER	REMARKS
1st					See Reverse for other details.
2nd					" " " " "
3rd					" " " " "
4th					" " " " "

### PLUGGING BACK AND DEEPENING RECORDS

	Date Commenced	Date Completed	No. Feet Plugged Back or Deepened	Prod. Before	Prod. After	REMARKS
1st						See Reverse for other details.
2nd						" " " " "
3rd						" " " " "
4th						" " " " "

(See Reverse for Record of Formation)



# RECORD OF FORMATIONS

FORMATION	TOP	BOTTOM	REMARKS
			Indicate Casing Points, Describe Shows of Oil, Gas and Water, etc.
Surface soil, sand, and clay	0	100	
Sand	100	420	
Sand and clay	420	520	
Shale and shells	520	1428	Set and cemented 8-5/8" OD, 24#, 8R thd., R-2, J-55, S.S. casing (A cond.) at 1428' with 600 sacks of Pozmix cement, 2% calcium chloride and 300 sacks of common cement with 2% calcium chloride. Cement circulated. Finished 6:15 a.m. 12/1/58.
Shale and shells	1428	2215	
Line, shale and chalk	2215	2530	
Line and anhydrite	2530	2695	
Line shells, shale and chalk	2695	2890	
Line and chalk	2890	2990	
Line	2990	3448	
Line and shale breaks	3448	3505	
Shale and line	3505	3911	
Line	3911	3941	
Line and shale	3941	4012	
Line and shale with streaks of chalk	4012	4115	
Line and chalk	4115	4169	
Line, shale and chalk	4169	4437	<u>TOP NEEDLER SHALE 4360'</u>
Line and shale	4437	4500	<u>TOP LANSING LINE 4480'</u>
Line	4500	4610	
Line and chalk	4610	4702	
Line	4702	4740	
Line and chalk	4740	4770	
Line	4770	4925	
Line and chalk streaks	4925	4956	
Line	4956	5075	
Line and shale	5075	5175	<u>TOP MARATHON LINE 5094'</u>
Line and chalk streaks	5175	5200	
Line	5200	5340	<u>TOP SHEROKEE 5276'</u>
Line and shale	5340	5381	
Line	5381	5505	
Line and shale	5505	5524	
Line	5524	5535	
Line and shale	5535	5546	
<b>Cored from 5546' to 5588' - Recovered 42'</b>			
Top 4'	Shale, black and hard		<u>TOP MORROW SHALE 5548'</u>
Next 1'	Shale, black, rotten		
Next 1'	Sand, very fine grained, silice, pyritic, spotted stain, good odor		<u>TOP MORROW SAND 5552'</u>
Next 10'	Sand, fine-medium grained, excellent porosity and permeability, saturated, good odor		
Next 2'	Sand, as above, calcareous and fossiliferous		
Next 9'	Lime, medium-coarse crystalline, very sandy, slightly glauconitic, fossiliferous, reworked with shale, very shaly in lower part, bleeding gas and oil		
Next 2'	Shale, black and rotten		
Next 5'	Lime, grey-tan, coarse crystalline, fossiliferous and shaly		
Next 2'	Shale, black and rotten		
Next 1'	Lime, tan, coarse crystalline, fossiliferous		
Next 1'	Chert, dark brown		
Last 4'	Shale, black, hard, limy		<u>TOP CHESTER LINE 5574'</u>
			Ran Halliburton drill stem test No. 1, packer set at 5523', used 65' anchor, open 30 mins., gas to surface in 2 1/2 minutes, gas gauged 7,600 MCF in 30 mins., recovered 70' oil, 90' heavy oil cut water and 60' salty water, IBHP-1900# 20 mins., IFF-885# FFP-1065#, FBHP-1890# in 20 minutes.
Line and shale	5588	5640	Ran Halliburton drill stem test No. 2, packer set at 5587', used 53' anchor, open 1 hour, gas to surface in 5 minutes, gas gauged 44 MCF in 1 hour, recovered 90' oil and 120' heavily oil and gas cut mud, 90' lightly mud cut oil, and 90' 34° gravity oil, IBHP-920# in 20 mins., IFF-75#, FFP-120#, FBHP-555# in 20 minutes.