

NOTICE OF INTENTION TO DRILL

TO BE FILED WITH THE STATE CORPORATION COMMISSION
PRIOR TO COMMENCEMENT OF WELL

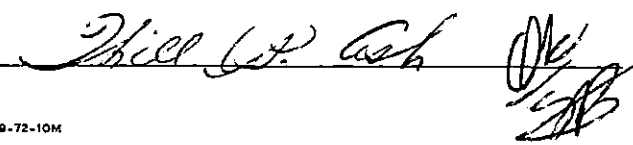
API Number 15-151-20,316
 (For office use only) 00-00

1. Operator Will P. Ash
 Address 507 Rutland Rd. Wichita, Kansas
2. Contractor Explorer Inc.
 Address Wichita, Kansas
3. Type of Equipment: Rotary Cable Tool _____
4. Well to be Drilled for: Oil Gas
 Disposal _____ Input _____ Other _____
5. Depth of Deepest Fresh Water within 1 mile 100 ft.
6. Depth of Municipal Water Well within 3 miles 100 ft.
7. Depth to Protect all Fresh Water 100 ft.
8. Amount of Surface Casing to be set 850' ft.
9. Alternate No. 1 No. 2

Starting Date Jan 15, 1976
 County Pratt
 Sec 26 Twp 29S S Rge 14W E
 Spot Location C S/2 S/2 SW/4
 Nearest Lease Line 330 ft.
 Lease Name Shriver
 Well No. 1
 Est. Total Depth 4700' ft.

REMARKS:

OPEBATOR STATES THAT HE WILL COMPLY WITH K. S. A. 55-128

Signature of Operator Will P. Ash 





State Corporation Commission of Kansas
Conservation Division
P. O. Box 17027
Wichita, Kansas 67217

RECEIVED
STATE CORPORATION COMMISSION

DEC 30 1975

CONSERVATION DIVISION
Wichita, Kansas

(IF PREFERRED, MAIL IN ENVELOPE)

15-151-20316-00-00

TYPE

NOTICE OF INTENTION TO DRILL

C-1

TO BE FILED WITH THE STATE CORPORATION COMMISSION
PRIOR TO COMMENCEMENT OF WELL

API Number _____
(For office use only)

1. Operator Will P. Ash

Starting Date z January 18, 1976

Address 507 Rutland Rd., Wichita, Ks.

County Pratt

2. Contractor XPLOR Drilling CO.

Sec 26 Twp 29 S Rge 14 W

Address 434 N. Market, Suite 110
Wichita, Kansas 67202

Spot Location C S/2 S/2 SW/4

3. Type of Equipment: Rotary X Cable Tool _____

Nearest Lease Line 330 ft.

4. Well to be Drilled for: Oil X Gas _____

Lease Name XXXXXXXX (Shriver)

Disposal _____ Input _____ Other _____

5. Depth of Deepest Fresh Water within 1 mile 200 ft.

6. Depth of Municipal Water Well within 3 miles 200 ft.

Well No. 1

7. Depth to Protect all Fresh Water 200 ft.

8. Amount of Surface Casing to be set 870 ft.

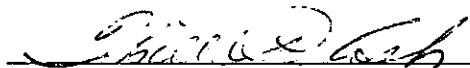
Est. Total Depth 4650 ft.

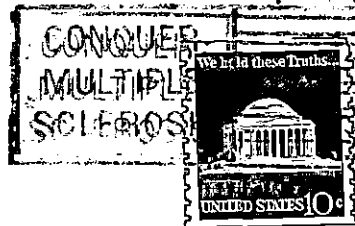
9. Alternate No. 1 X No. 2 2

REMARKS:

OPERATOR STATES THAT HE WILL COMPLY WITH K. S. A. 55-128

Signature of Operator _____





State Corporation Commission of Kansas
Conservation Division
P. O. Box 17027
Wichita, Kansas 67217

RECEIVED
STATE CORPORATION COMMISSION

DEC 30 1975 12-30-75

CONSERVATION DIVISION
Wichita, Kansas

(IF PREFERRED, MAIL IN ENVELOPE)

12-23-75