

STATE OF KANSAS
STATE CORPORATION COMMISSION

Form CP-4

Give All Information Completely
Make Required Affidavit
Mail or Deliver Report to:
Conservation Division
State Corporation Commission
212 No. Market
Wichita, Kansas 67202

WELL PLUGGING RECORD

Stafford County, Sec. 15 Twp. 24S Rge. 12W (E) (W)

Location as "NE/CNW/SW" or footage from lines SE SW SE

Lease Owner Kathol Petroleum, Inc.

Lease Name Jenkins Well No. 2

Office Address 900 Sutton Place, Wichita, Kansas 67202

Character of Well (completed as Oil, Gas or Dry Hole) Dry Hole

Date well completed March 23, 1972

Application for plugging filed March 23, 1972

Application for plugging approved March 23, 1972

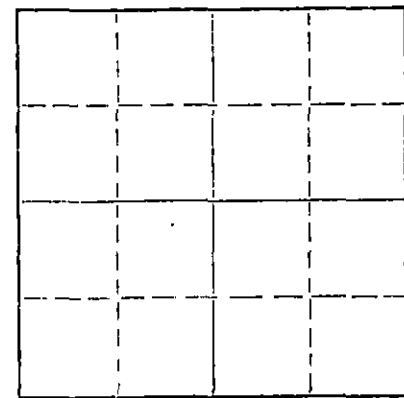
Plugging commenced March 23, 1972

Plugging completed March 24, 1972

Reason for abandonment of well or producing formation Dry Hole

If a producing well is abandoned, date of last production 19

Was permission obtained from the Conservation Division or its agents before plugging was commenced? Yes



Locate well correctly on above Section Plat

Name of Conservation Agent who supervised plugging of this well G. R. Biberstein

Producing formation _____ Depth to top _____ Bottom _____ Total Depth of Well 4005 Feet

Show depth and thickness of all water, oil and gas formations.

OIL, GAS OR WATER RECORDS

CASING RECORD

FORMATION	CONTENT	FROM	TO	SIZE	PUT IN	PULLED OUT
				8-5/8	242	None

Describe in detail the manner in which the well was plugged, indicating where the mud fluid was placed and the method or methods used in introducing it into the hole. If cement or other plugs were used, state the character of same and depth placed, from _____ feet to _____ feet for each plug set.

Filled hole with heavy mud to 300', set plug, 1/2 sack hulls & pumped 40 sacks cement on plug. Filled hole with heavy mud to 40', set plug, 1/2 sack hulls & pumped 10 sacks cement on plug. 2 sacks cement in rat hole.

RECEIVED
STATE CORPORATION COMMISSION
APR 3 - 1972
CONSERVATION DIVISION
Wichita, Kansas 4-3-72

(If additional description is necessary, use BACK of this sheet)
Name of Plugging Contractor Kathol Petroleum, Inc.

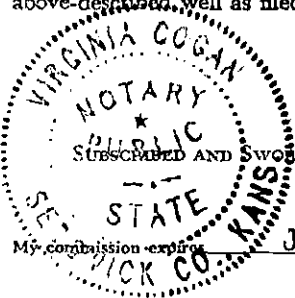
Address 900 Sutton Place, Wichita, Kansas 67202

STATE OF KANSAS, COUNTY OF SEDGWICK, ss. Homer J. Catt (employee of owner) or (owner or operator) of the above-described well, being first duly sworn on oath, says: That I have knowledge of the facts, statements, and matters herein contained and the log of the above-described well as filed and that the same are true and correct. So help me God.

(Signature) Homer J. Catt
900 Sutton Place, Wichita, Ks. 67202
(Address)

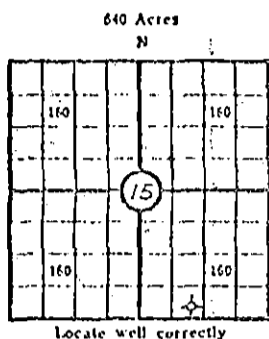
Subscribed and sworn to before me this 31st day of March, 1972

June 4, 1975 Virginia Cogan Notary Public.



KANSAS CORPORATION COMMISSION
WELL RECORD

(Mail to Kansas Geological Survey, 4150 Monroe Street, Wichita, Kansas 67209)



Lease Name: Jenkins Well No. 2
 Well Located: SE SW SE
SEC 15 TWP 24S RGE 12W
 Operator: Kathol Petroleum, Inc.
 Address: 900 Sutton Place, Wichita, Kansas 67202
 Elevation: Ground 1865' D.F. 1868' K.B. 1870'
 Type Well: (Oil, gas, dry hole) Dry Hole

Drilling Commenced: 3/16 1972 Drilling Completed: 3/24 1972
 Well Completed: 3/24 1972 Total Depth 4005'
 Initial Production: Dry

Casing Record

Size: 8-5/8" Set at 242' Size: _____ Set at _____
 Size: _____ Set at _____ Size: _____ Set at _____

Liner Record

Size: _____ Set from _____ To _____

Cementing

Casing Size	Sacks	Type Cement and Additives
<u>8-5/8"</u>	<u>200</u>	<u>Common Cement</u>
_____	_____	_____
_____	_____	_____

RECEIVED
STATE CORPORATION COMMISSION
APR 3 - 1972
CONSERVATION DIVISION
Wichita, Kansas

Perforations

Formation	Perforated Interval and Number Shots
_____	_____
_____	_____
_____	_____

Electric Log Run (Show type log and depths covered)
None

(Fill in formation and related information on reverse side)

FORMATION, TESTING AND COMPLETION RECORD

Show Drill Stem Tests,
Well Stimulation and
Production Tests

Formation	Top	Bottom
surface hole	0	242
red bed & shale	242	860
shale & shells	860	1680
shale & shells	1680	2015
shale & lime	2015	2295
shale & lime	2295	2495
shale & lime	2495	2840
shale & lime	2840	3000
shale & lime	3000	3215
lime & shale	3215	3352
lime & shale	3352	3515
lime & shale	3515	3606
lime & shale	3606	3675
lime & shale	3675	3785
lime	3785	3845
lime & chert	3845	3893
lime	3893	3918
lime	3918	3995
lime	3995	4005

D.S.T. #1 3816-3845

R.T.D.

RECEIVED
STATE CORPORATION COMMISSION
APR 3 - 1972
CONSERVATION DIVISION
Wichita, Kansas