

STATE OF KANSAS
STATE CORPORATION COMMISSION

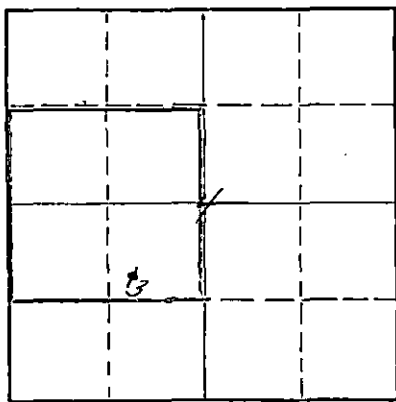
Give All Information Completely
Make Required Affidavit
Mail or Deliver Report to:
Conservation Division
State Corporation Commission
800 Bittig Building
Wichita, Kansas

WELL PLUGGING RECORD

Pratt County, Sec. 4 Twp. 26S Rge. (E) 13 (W)

Location as "NE/CNW/SW" or footage from lines SW/4 NE/4 SW/4
Lease Owner Skelly Oil Company
Lease Name Gertrude Dodson Well No. 3
Office Address Box 1650, Tulsa, Oklahoma
Character of Well (completed as Oil, Gas or Dry Hole) Dry Hole
Date well completed April 12, 1955
Application for plugging filed April 13, 1955
Application for plugging approved April 14, 1955
Plugging commenced April 13, 1955
Plugging completed April 14, 1955
Reason for abandonment of well or producing formation Dry Hole

NORTH



Locate well correctly on above
Section Plat

If a producing well is abandoned, date of last production _____ 19____
Was permission obtained from the Conservation Division or its agents before plugging was commenced? Yes (Verbally)

Name of Conservation Agent who supervised plugging of this well Mr. M. A. Rives

Producing formation _____ Depth to top _____ Bottom _____ Total Depth of Well 4356 Feet
Show depth and thickness of all water, oil and gas formations.

OIL, GAS OR WATER RECORDS

CASING RECORD

FORMATION	CONTENT	FROM	TO	OD SIZE	PUT IN	PULLED OUT
Simpson Sand	Dry	4309'	4356'	8-5/8"	831' 0"	None

Describe in detail the manner in which the well was plugged, indicating where the mud fluid was placed and the method or methods used in introducing it into the hole. If cement or other plugs were used, state the character of same and depth placed, from _____ feet to _____ feet for each plug set.

100 sacks of cement	4356' to 4100'
Mud laden fluid	4100' to 300'
Hulls and 20 sacks cement	300' to 235'
Mud laden fluid	235' to 35'
10 sacks of cement	35' to 5'
Surface soil	5' to 0'

RECEIVED
STATE CORPORATION COMMISSION
APR 27 1955
4-27-55
CONSERVATION DIVISION
Wichita, Kansas

(If additional description is necessary, use BACK of this sheet)
Name of Plugging Contractor Claude Wentworth Drilling Co., Inc.
Address 2701 East 15th Street, Tulsa, Oklahoma

STATE OF Kansas, COUNTY OF Reno
H. E. Wamsley (employee of owner) of the above-described well, being first duly sworn on oath, says: That I have knowledge of the facts, statements, and matters herein contained and the log of the above-described well as filed and that the same are true and correct. So help me God.

(Signature) _____
Box 391, Hutchinson, Kansas
(Address)

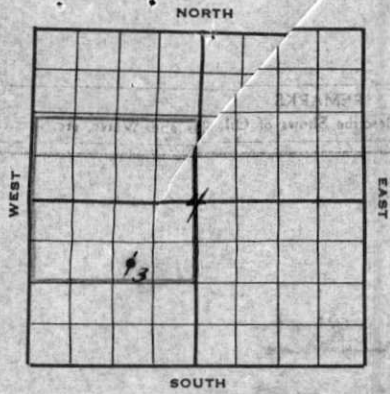
SUBSCRIBED AND SWORN TO before me this 26th day of April, 1955

My commission expires April 7, 1959

Josephine L. Johnson Notary Public.

PLUGGING
FILE SEC 4 T 26 R 13 W
BOOK PAGE 111 LINE 17

SKELLY OIL COMPANY



Well Record

1940'RB

1937'BF

Elev. 1934'Gr.

Lease Name and No. Gertrude Dodson Well No. 3
 Lease Description 1/2 NW/4 and 1/2 SW/4 section 4-26-13W,
Pratt County, Kansas (160 Acres)

Location made February 26, 1955 by Ted L. Dix
330 feet from North line 990 feet from East line 1/2 SW/4
330 feet from South line feet from West line of Sec. 4

Work com'd 3/24 1955 Rig comp'd 3/25 1955 Drlg. com'd 3/25 1955 Drlg. comp'd 4/22 1955

Rig Contractor Claude Wentworth Drilling Co., Inc.

Drilling Contractor Claude Wentworth Drilling Co., Inc.

Rotary Drilling from 0' to 4356' Cable Tool Drilling from _____ to _____

Commenced Producing DRY HOLE 19____ { Initial Prod. before shot or acid _____ Bbls.
 Initial Prod. after shot or acid _____ Bbls.

Dry Gas Well Press. _____ Volume _____ Cu. ft.

Casing Head Gas Pressure _____ Volume _____ Cu. ft.

Braden Head (_____ Size) Gas Pressure _____ Volume _____ Cu. ft.

Braden Head (_____ Size) Gas Pressure _____ Volume _____ Cu. ft.

PRODUCING FORMATION DRY HOLE (Name) Top _____ Bottom _____ TOTAL DEPTH 4356'

CASING RECORD

OD Size	Wt.	Thds.	Where Set	PULLED OUT			LEFT IN			KIND	Cond'n	CEMENTING	
				Jts.	Feet	In.	Jts.	Feet	In.			Sacks Used	Method Employed
<u>8-5/8"</u>	<u>22.7</u>	<u>8J</u>	<u>838'</u>				<u>21</u>	<u>831'</u>	<u>0'</u>	<u>Armo SW</u>	<u>A</u>	<u>475</u>	<u>Halliburton</u>
<u>(8-5/8" casing set 1' in cellar)</u>													

Liner Set at _____ Length _____ Perforated at _____

Liner Set at _____ Length _____ Perforated at _____

Packer Set at _____ Size and Kind _____

Packer Set at _____ Size and Kind _____

SHOT OR ACID TREATMENT RECORD

Date	FIRST		SECOND		THIRD		FOURTH	
	Ft. and	Ft.	Ft. and	Ft.	Ft. and	Ft.	Ft. and	Ft.
Acid Used		Gals. Qts.		Gals. Qts.		Gals. Qts.		Gals. Qts.
Size Shot								
Shot Between								
Size of Shell								
Put in by (Co.)								
Length anchor								
Distance below Cas'g								
Damage to Casing or Casing Shoulder								

SIGNIFICANT GEOLOGICAL FORMATIONS

NAME	Top	Bottom	GAS		OIL		REMARKS
			From	To	From	To	
<u>Seebner shale</u>	<u>3545'</u>						
<u>Toronto</u>	<u>3562'</u>						
<u>Douglas sand</u>	<u>3506'</u>						
<u>Lansing Lime</u>	<u>3736'</u>						
<u>Conglomerate</u>	<u>4111'</u>						
<u>Mississippi</u>	<u>4148'</u>						
<u>Viola Lime</u>	<u>4219'</u>						
<u>Impson sand</u>	<u>4309'</u>						

CLEANING OUT RECORDS

	DATE COMMENCED	DATE COMPLETED	PROD. BEFORE	PROD. AFTER	REMARKS
1st					See Reverse for other details.
2nd					" " " " "
3rd					" " " " "
4th					" " " " "

PLUGGING BACK AND DEEPENING RECORDS

	Date Commenced	Date Completed	No. Feet Plugged Back or Deepened	Prod. Before	Prod. After	REMARKS
1st						See Reverse for other details.
2nd						" " " " "
3rd						" " " " "
4th						" " " " "

(See Reverse for Record of Formation)

Chert	4156	4160	Ran Halliburton drill stem test, packer set at 4141', used 19' anchor, open 1 hour, good blow throughout test, recovered 120' of gas and 25' drilling mud, initial flow 40#, final flow 40#, BHP-974#.
Line and chert	4160	4218	TOP KINDENHOOK SHALE 4194' TOP MISERER SAND 4204' TOP VIOLA LIME 4219'
White opaque to semi-opaque smooth chert	4218	4227	Very slightly spotted porosity, no shows
Line and shale	4227	4311	TOP SIMPSON SHALE 4306' TOP SIMPSON SAND 4309'

Cored from 4311' to 4356' - Recovered 423'

- Top 2' - Gray, very shaley medium grained sand, very slight show of oil
- Next 6'6" - Same, no shows
- Next 2'6" - Brown, medium grained shaley sand, good stain and odor with salty taste
- Next 6' - Brown, medium grained, slightly shaley sand bleeding oil, good odor
- Next 4' - Gray, medium grained slightly shaley sand, slight oil stain
- Next 5' - Dark gray shale
- Next 3' - Gray, fine grained shaley sand
- Last 13'6" - Dark gray sandy shale

BASE SIMPSON SAND 4333'

Ran Halliburton drill stem test, packer set at 4300', used 56' anchor, open 1 hour, very weak blow immediately and throughout test, recovered 100' of watery mud, initial flow 55#, final flow 85#, BHP-892#.

Ran Schlumberger Survey

TOTAL DEPTH 4356'

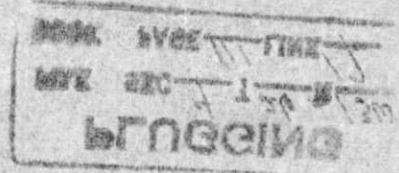
Since oil or gas in commercial quantities was not found in drilling to the total depth of 4356', regular authority was granted to plug and abandon the well. The well was plugged as follows:

100 sacks of cement	4356' to 4100'
Mud laden fluid	4100' to 300'
Hulls and 20 sacks cement	300' to 235'
Mud laden fluid	235' to 35'
10 sacks of cement	35' to 5'
Surface soil	5' to 0'

Plugged and abandoned April 14, 1955.

SLOPE TEST DATA

DEPTH	ANGLE OF DEFLECTION
250'	0 Degrees
500'	0 "
750'	0 "
1000'	0 "
1250'	0 "
1500'	0 "
1750'	0 "
2000'	0 "
2250'	0 "
2500'	0 "
2750'	0 "
3000'	0 "
3250'	0 "
3750'	1/2 "



CONSERVATION

1955

Faint, illegible text, likely bleed-through from the reverse side of the page.

MADE IN U.S.A.
Tibor...
G...
...
...

PLUGGING
RUE SEC 4 1 26 1300
BOOK PAGE 111 LINE 17

RECEIVED
STATE CORPORATION COMMISSION
APR 27 1985
CONSERVATION DIVISION
Wichita, Kansas