

STATE OF KANSAS
STATE CORPORATION COMMISSION

Give All Information Completely
Make Required Affidavit
Mail or Deliver Report to:
Conservation Division
State Corporation Commission
211 No. Broadway
Wichita, Kansas

15.185.11875.00.00
15.185.01040.00.00
WELL PLUGGING RECORD

Stafford County. Sec. 27 Twp. 22 Rge. 14 (W)

Location as "NE/CNW $\frac{1}{2}$ SW $\frac{1}{2}$ " or footage from lines SW NW NW

Lease Owner D.R. Lauck Oil Company, Inc & Sunray Mid-Continent

Lease Name Garvin Well No. 1

Office Address 301 South Broadway Wichita 2 Kans

Character of Well (completed as Oil, Gas or Dry Hole) dry hole

Date well completed January 12 19 59

Application for plugging filed " " 19 59

Application for plugging approved " " 19 59

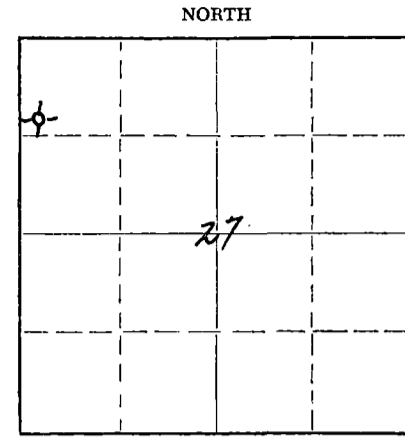
Plugging commenced " " 19 59

Plugging completed " " 19 59

Reason for abandonment of well or producing formation dry hole

If a producing well is abandoned, date of last production -- 19 --

Was permission obtained from the Conservation Division or its agents before plugging was commenced? YES



Locate well correctly on above Section Plat

Name of Conservation Agent who supervised plugging of this well Mr. Frank Broadfoot 3950

Producing formation -- Depth to top -- Bottom -- Total Depth of Well 3950 Feet

Show depth and thickness of all water, oil and gas formations.

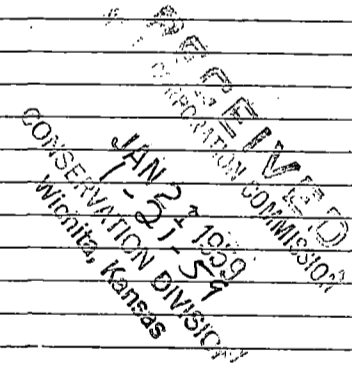
OIL, GAS OR WATER RECORDS

CASING RECORD

FORMATION	CONTENT	FROM	TO	SIZE	PUT IN	PULLED OUT
		216'	0	8 5/8"	216'	none

Describe in detail the manner in which the well was plugged, indicating where the mud fluid was placed and the method or methods used in introducing it into the hole. If cement or other plugs were used, state the character of same and depth placed, from feet to feet for each plug set.

hole filled with mud	3950 - 200
plug	200 - 196
cement	196 - 40
mud	40 - 35
plug	35 - 31
cement	31 - 6 bottom of cellar



(If additional description is necessary, use BACK of this sheet)

Name of Plugging Contractor Sun Cementing Company

Address Great Bend Kansas

STATE OF Kansas, COUNTY OF Sedgwick, ss.

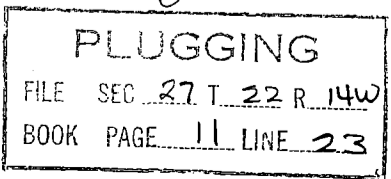
John H. Knightley (employee of owner) or (owner or operator) of the above-described well, being first duly sworn on oath, says: That I have knowledge of the facts, statements, and matters herein contained and the log of the above-described well as filed and that the same are true and correct. So help me God.

(Signature) John H. Knightley
Wichita, Kansas (Address)

SUBSCRIBED AND SWORN TO before me this 19 day of January, 19 59

My commission expires Sept. 14, 1959

Elyabeth Ray
Notary Public.



D. R. Lauck Oil Company, Inc.
 & Sunray Mid-Continent Oil Company

Garvin #1

SW NW NW Sec. 27-22S-14W
 Stafford County Kansas

Commenced: Jan. 1 1959

Completed: Jan. 12, 1959

Casing Record 216' 8 5/8" cemented with 200 sacks
 calcium chloride 4 sacks

Elevation: GR 1943; DF 1945; KB 1947

Drillers Log

sand & clay	160
shale	230
red bed shale	320
sand	385
red bed	870
Anhydrite	890
red bed & shale	1360
shale & shells	1700
shale & Lime	1850
Lime & shale	2305
shale & lime	2845
Lime & shale	3165
Lime	3390
shale	3483
Lime	3575
Lime & shale	3630
Lime	3730
Lime & shale	3785
lime	3817
chert & shale	3850
shale, lime & sand	3890
shale	3910
Arbuckle	3950 RTD

Heebner	3354-1407	3354-1407
Douglas	3391-1544	3392-1545
Brown Lime	3483-1536	3483-1536
Lsg Kansas City	3494-1547	3495-1548
Base Kansas City	3722-1775	3722-1775
Conglomerate	3792-1845	3792-1845
Viola	3810-1863	3812-1865
Simpson shale	3850-1903	3851-1904
Arbuckle	3909-1962	3908-1961
Rotary Total Depth	3950-2003	3949-2002

DST #1 (M-D) 3617-3633; open 1 hr; weak
 blow 1 hr. recovered 30' mud
 w/specks of oil; IFP 15#
 FFP 30#, BHP 222# shut in
 30 min.

DST #2 (M-D) 3749-3817; open 30 min.
 weak blow 16 min; recovered
 10' mud. AZ1 pressures 0#;
 shut in 20 minutes.

D & A

PLUGGING			
FILE	SEC	27 T 22	R 14W
BOOK	PAGE	11	LINE 23