

SIDE TWO

Operator Name ANADARKO PETROLEUM CORPORATION Lease Name SHAFFER "D" Well # 3

Sec. 25 Twp. 32S Rge. 39 East West County STEVENS

INSTRUCTIONS: Show important tops and base of formations penetrated. Detail all cores. Report all drill stem tests giving interval tested, time tool open and closed, flowing and shut-in pressures, whether shut-in pressure reached static level, hydrostatic pressures, bottom hole temperature, fluid recovery, and flow rates if gas to surface during test. Attach extra sheet if more space is needed. Attach copy of log.

Drill Stem Tests Taken Yes No
(Attach Additional Sheets.)

Samples Sent to Geological Survey Yes No

Cores Taken Yes No

Electric Log Run Yes No
(Submit Copy.)

List All E.Logs Run: 4BL, DIL, CNL-LDT-ML, SONIC.

Log Formation (Top), Depth and Datums Sample

Name	Top	Datum
CHASE	2430	
COUNCIL GROVE	2760	
B;HEEBNER	3974	
MARMATON	4752	
MORROW	5516	
STE. GENEVIEVE	6140	
ST. LOUIS	6238	

CASING RECORD

New Used

Report all strings set-conductor, surface, intermediate, production, etc.

Purpose of String	Size Hole Drilled	Size Casing Set (In O.D.)	Weight Lbs./Ft.	Setting Depth	Type of Cement	# Sacks Used	Type and Percent Additives
SURFACE	17-1/2"	13-3/8"	48.0	660	P+ MIDCON/ P+	355/150	3%CC, .1%FWCA, 1/8#/SK PF/2%CC, 1/8#/SK PF.
INTERMEDIATE	12-1/4"	8-5/8"	23.0	1796	P+ MIDCON/ P+	395/100	3%CC, .1%FWCA, 1/8#/SK PF/2%CC, 1/8#/SK PF.
PRODUCTION	7-7/8"	5-1/2"	15.5	6319	50/50 POZ/ 50/50 POZ.	25/280	.75%H322, 10%SALT, 1/8#/SK PF/SAME.

ADDITIONAL CEMENTING/SQUEEZE RECORD

Purpose:	Depth Top Bottom	Type of Cement	#Sacks Used	Type and Percent Additives
<input type="checkbox"/> Perforate				
<input type="checkbox"/> Protect Casing				
<input type="checkbox"/> Plug Back TD				
<input type="checkbox"/> Plug Off Zone				

Shots Per Foot	PERFORATION RECORD - Bridge Plugs Set/Type Specify Footage of Each Interval Perforated	Acid, Fracture, Shot, Cement Squeeze Record (Amount and Kind of Material Used)	Depth
4	5846-69, 5934-50.	ACID: 2500 GAL 7-1/2% FEHCL.	5846-5950 OA

TUBING RECORD	Size	Set At	Packer At	Liner Run
	2-3/8"	5845		<input type="checkbox"/> Yes <input checked="" type="checkbox"/> No

Date of First, Resumed Production, SWD or Inj. 7-19-2001 Producing Method Flowing Pumping Gas Lift Other (Explain)

Estimated Production Per 24 Hours	Oil Bbls.	Gas Mcf	Water Bbls.	Gas-Oil Ratio	Gravity
	7	927	20		

Disposition of Gas:

METHOD OF COMPLETION

Production Interval

Vented Sold Used on Lease
(If vented, submit ACO-18.)

Open Hole Perf. Dually Comp. Commingled

Other (Specify)

5846-5950 OA

HALLIBURTON		JOB SUMMARY		SALES ORDER NUMBER 1342682	TICKET DATE 06/13/01
REGION NORTH AMERICA LAND		MVA / COUNTRY MID CONTINENT		BDA / STATE KS	COUNTY STEVENS
MBU ID / EMPL # MCLI0101 106322		H.E.S. EMPLOYEE NAME DANNY McLANE		PSL DEPARTMENT Cementing Services	
LOCATION LIBERAL		COMPANY ANADARKO		CUSTOMER REP / PHONE ALLAN HENNE	
TICKET AMOUNT \$21,397.99		WELL TYPE OIL		API/UWI #	
WELL LOCATION HUGOTON		DEPARTMENT CEMENT		SAP BOMB NUMBER 7521	Description Cement Surface Casing
LEASE NAME SHAFFER		Well No. D-3	SEC / TWP / RNG 25 32S 39W	HES FACILITY (CLOSEST TO WELL SITE) HUGOTON	

HES EMP NAME / EMP # / (EXPOSURE HOURS)	HRS	HRS	HRS	HRS
McLane, D 106322	20.0	Grubbs, D 219434	3.0	
Tate, N 105953	20.0	Schawo, N 222552	10.0	
Cochran, M 217398	20.0	Heston, M 106226	9.0	
Lopez, J 198514	13.0			

KCC

OCT 01 2001

H.E.S. UNIT #S / (R / T MILES)	R / T MILES	R / T MILES	R / T MILES	R / T MILES
420995	100	421756	100	
54218 78202	100			
52382 6612	20			
10244148 77031	20			

CONFIDENTIAL ORIGINAL

Form. Name _____ Type: _____
 Form. Thickness _____ From _____ To _____
 Packer Type _____ Set At _____
 Bottom Hole Temp. _____ Pressure _____
 Retainer Depth _____ Total Depth _____

Date	Called Out	On Location	Job Started	Job Completed
	06/13/2001	06/13/2001	06/14/2001	06/14/2001
Time	0730	1000	1130	1310

Tools and Accessories

Type and Size	Qty	Make
Insert 13 3/8	1	H
Float Shoe		
Centralizers 13 3/8	4	O
Top Plug 13 3/8	1	
HEAD 13 3/8	1	W
Limit clamp		
Weld-A	1	C
Guide Shoe 13 3/8	1	
Basket 13 3/8	1	O

Well Data

	New/Used	Weight	Size	Grade	From	To	Max. Allow
Casing	NEW	48.0	13 3/8	KB	676.37		
Liner							
Liner							
Tubing							
Drill Pipe							
Open Hole							Shots/Ft.
Perforations							
Perforations							
Perforations							

RECEIVED

OCT 09 2001

Materials

Mud Type	Density	Lb/Gal
Disp. Fluid	Density	Lb/Gal
Prop. Type	Size	Lb
Prop. Type	Size	Lb
Acid Type	Gal.	%
Acid Type	Gal.	%
Surfactant	Gal.	In
NE Agent	Gal.	In
Fluid Loss	Gal/Lb	In
Gelling Agent	Gal/Lb	In
Fric. Red.	Gal/Lb	In
Breaker	Gal/Lb	In
Blocking Agent	Gal/Lb	
Perfpac Balls	Qty.	
Other		
Other		
Other		
Other		
Other		

Hours On Location

Date	Location	Operating Hours	Description of Job
6/13			
6/14			
Total			

SEE JOB LOG

Release

NOV 04 2002

From

Confidential

Ordered	Hydraulic Horsepower Avail.	Used
Treating	Average Rates in BPM Disp.	Overall
Feet 45.07	Cement Left in Pipe Reason	SHOE JOINT

Cement Data

Stage	Sacks	Cement	Bulk/Sks	Additives	W/Rq.	Yield	Lbs/Gal
1	355	P+ MIDCON	BULK	3 % CC 1/4# POLY FLAKE .1% FWCA	17.92	2.92	11.40
1	150	PREM PLUS	BULK	2% CC 1/8# POLY FLAKE	6.30	1.32	14.8

Summary

Circulating Breakdown	Displacement	Preflush:	BBI	5.00	Type:	FRESH WATER
	MAXIMUM	Load & Bkdn:	Gal - BBI		Pad:Bbl -Gal	99
Average	Frac. Gradient	Treatment:	Gal - BBI		Disp:Bbl	99
Shut In: Instant	5 Min. 15 Min.	Cement Slurry	BBI	LC 184.5 TC 35		
		Total Volume	BBI	#VALUE!		

THE INFORMATION STATED HEREIN IS CORRECT
 CUSTOMER REPRESENTATIVE _____ SIGNATURE _____

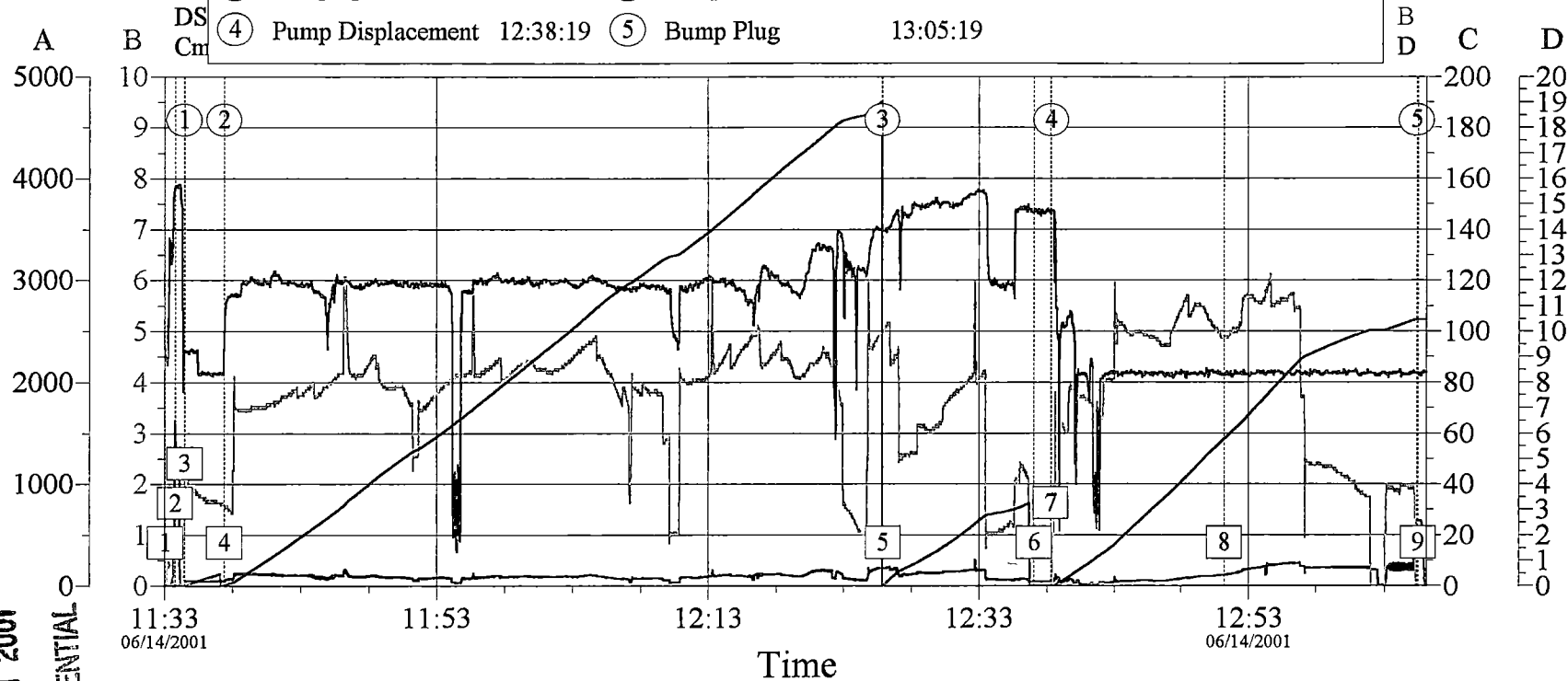
RECEIVED

OCT 09 2001

KCC WICHITA

Release
NOV 04 2003
From
Confidential

Stages			
① Pump Spacer 1	11:34:27	② Pump Lead Cement	11:37:24
③ Pump Tail Cement	12:25:51	④ Pump Displacement	12:38:19
⑤ Bump Plug	13:05:19		



Event Log			
① Start Job	11:33:02	② Test Lines	11:33:46
③ Pump Spacer 1	11:34:29	④ Pump Lead Cement	11:37:24
⑤ Pump Tail Cement	12:25:54	⑥ Drop Top Plug	12:37:02
⑦ Pump Displacement	12:38:17	⑧ Displ Reached Cement	12:51:10
⑨ Bump Plug	13:05:26		
⑩ End Job	13:06:38		

KCC
OCT 01 2001
CONFIDENTIAL

Customer:	Job Date:	Ticket #:
Well Description:	UWI:	

HALLIBURTON
CemWin v1.3.0
14-Jun-01 13:10

HALLIBURTON		JOB SUMMARY		SALES ORDER NUMBER 1348184	TICKET DATE 06/16/01
REGION NORTH AMERICA LAND	NWA / COUNTRY MID CONTINENT	BDA / STATE KS	COUNTY STEVENS		
MBU ID / EMPL # MCLI0101 106322	H.E.S EMPLOYEE NAME DANNY McLANE KCC	PSL DEPARTMENT Cementing Services		CUSTOMER REP / PHONE ALLAN HENNE	
LOCATION LIBERAL	COMPANY ANADARKO	WELL TYPE OIL		API/UWI #	
TICKET AMOUNT \$14,371.15	DEPARTMENT CEMENT	SAP BOMB NUMBER 7522	Description Cement Intermediate Casing		
WELL LOCATION HUGOTON	SEC / TWP / RNG 25 32S 39W	HES FACILITY (CLOSEST TO WELL SITE) HUGOTON		CONFIDENTIAL	
LEASE NAME SHAFFER	Well No. D-3				

HES EMP NAME / EMP # / (EXPOSURE HOURS)	HRS	HRS	HRS	HRS
McLane, D 106322	6.0	Bradshaw, F 227645	6.0	
Wille, D 225409	6.0			
Arnett, J 226567	6.0			
Gonzales, R 224608	6.0			
H.E.S. UNIT #S / (R / T MILES)	R / T MILES	R / T MILES	R / T MILES	R / T MILES
420995	100			
54218 78202	100			
52382 6612	20			
54029 6611	20			

RECEIVED
OCT 09 2001
KCC WICHITA

Form. Name _____ Type: _____
 Form. Thickness _____ From _____ To _____
 Packer Type _____ Set At _____
 Bottom Hole Temp. _____ Pressure _____
 Retainer Depth _____ Total Depth _____

Date	Called Out 06/16/2001	On Location 06/16/2001	Job Started 06/16/2001	Job Completed 06/16/2001
Time	0430	0730	1130	1240

Type and Size	Qty	Make
Insert 8 5/8	1	H
Float Shoe		
Centralizers 8 5/8	6	O
Top Plug 8 5/8	1	
HEAD 8 5/8	1	W
Limit clamp		
Weld-A	1	C
Guide Shoe 8 5/8	1	
Basket 8 5/8	1	O

New/Used		Weight	Size	Grade	From	To	Max. Allow
Casing	NEW	23.0	8 5/8		KB	1809.40	
Liner							
Liner							
Tubing							
Drill Pipe							
Open Hole							Shots/Ft.
Perforations							
Perforations							
Perforations							

Materials			
Mud Type	Density	Lb/Gal	
Disp. Fluid	Density	Lb/Gal	
Prop. Type	Size	Lb	
Prop. Type	Size	Lb	
Acid Type	Gal.	%	
Acid Type	Gal.	%	
Surfactant	Gal.	In	
NE Agent	Gal.	In	
Fluid Loss	Gal/Lb	In	
Gelling Agent	Gal/Lb	In	
Fric. Red.	Gal/Lb	In	
Breaker	Gal/Lb	In	
Blocking Agent	Gal/Lb		
Perfpac Balls	Qty.		
Other			
Other			
Other			
Other			

Hours On Location		Operating Hours		Description of Job
Date	Hours	Date	Hours	
6/16		6/16		SEE JOB LOG
Total		Total		

Ordered	Hydraulic Horsepower Avail.	Used
Treating	Average Rates in BPM Disp.	Overall
Feet 43.33	Cement Left in Pipe Reason	SHOE JOINT

Cement Data				Additives	W/Rq.	Yield	Lbs/Gal
Stage	Sacks	Cement	Bulk/Sks				
1	395	P+ MIDCON	BULK	3 % CC 1/4# POLY FLAKE .1% FWCA	17.92	2.92	11.40
1	100	PREM PLUS	BULK	2% CC 1/8# POLY FLAKE	6.30	1.32	14.8

Release
NOV 04 2003
From
Confidential

Summary			
Circulating Breakdown	Displacement	Preflush: BBI	Type: FRESH WATER
Load Returns	MAXIMUM	Load & Bkdn: Gal - BBI	Pad: Bbl - Gal
Cmt Rtn/Bbl	Actual TOC	Excess /Return BBI	Calc. Disp Bbl 113
Average Shut In: Instant	Frac. Gradient	Calc. TOC	Actual Disp 113
	5 Min. 15 Min.	Treatment: Gal - BBI	Disp: Bbl
		Cement Slurry BBI	LC 205.5 TC 23.3
		Total Volume BBI	#VALUE!

THE INFORMATION STATED HEREIN IS CORRECT
 CUSTOMER REPRESENTATIVE _____
 SIGNATURE _____



JOB LOG **KCC**

TICKET #	TICKET DATE
1348184	06/16/01

REGION NORTH AMERICA LAND	NWA / COUNTRY MID CONTINENT	BDA / STATE KS	COUNTY STEVENS
MBU ID / EMTL # MCLI0101 106322	H.E.S. EMPLOYEE NAME DANNY McLANE	OCT 0 1 2001	
LOCATION LIBERAL	COMPANY ANADARKO	PSL DEPARTMENT Cementing Services	CUSTOMER REP / PHONE ALLAN HENNE
TICKET AMOUNT \$14,371.15	WELL TYPE OIL	API/UWI #	
WELL LOCATION HUGOTON	DEPARTMENT CEMENT	JOB PURPOSE CODE Cement Intermediate Casing	
LEASE NAME SHAFER	Well No. D-3	SEC / TWP / RNG 25 32S 39W	HES FACILITY (CLOSEST TO WELL'S) HUGOTON

HES EMP NAME/EMP # (EXPOSURE HOURS)	HRS	HES EMP NAME/EMP # (EXPOSURE HOURS)	HRS	HES EMP NAME/EMP # (EXPOSURE HOURS)	HRS	HES EMP NAME/EMP # (EXPOSURE HOURS)	HRS
Mclane, D 106322	6	Bradshaw, F 227645	6				
Wille, D 225409	6						
Arnett, J 226567	6						
Gonzales, R 224608	6						

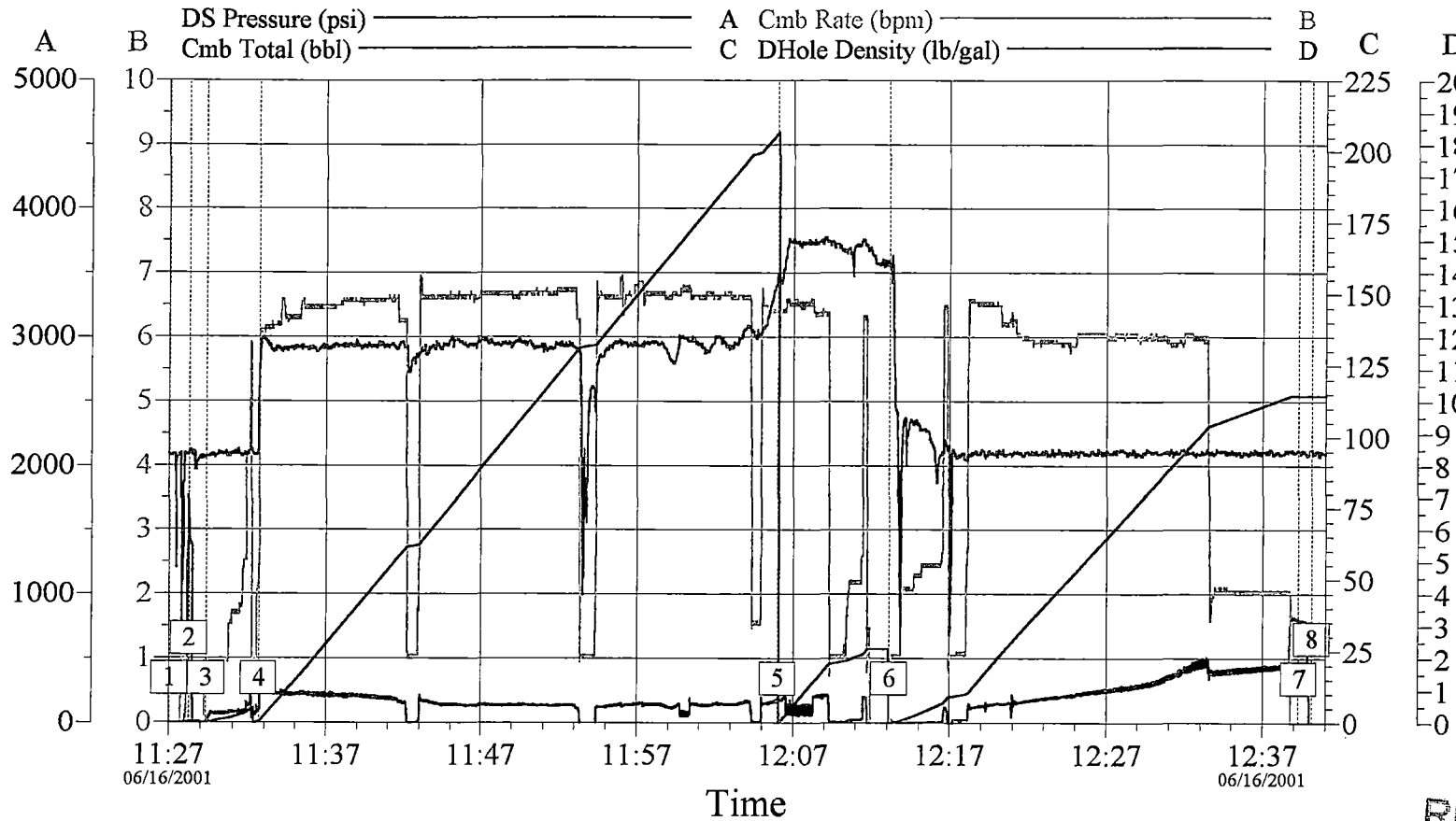
Chart No.	Time	Rate (BPM)	Volume (BBL)(GAL)	Rate		Press.(PSI)		Job Description / Remarks
				N2	CSG.	Tbg		
	0430							CALLED FOR JOB
	0730							ON LOCATION RIG ON BOTTOM CIRCULATING HOLD
								SAFTY MEETING SET UP TRUCKS
	0800							RIG THUR CIRCULATING AND TRIPPING OUT DP
	0900							DP OUT OF HOLE
	0915							RIG UP CASING CREW
	0945							START RUNNING 8 5/8 CASING AND FLOAT EQUIP.
	1107							CASING ON BOTTOM & HOOK UP PC & IRON
	1109							START CIRCULATING
	1125							THUR CIRCULATING
	1127							HOOK UP TO PUMP TRUCK
								JOB PROCEDURE FOR 8 5/8 INTERMEDIATE
	1128					0/1500		PRESSURE TEST LINES
	1129	2	5			0/100		START FRESH WATER AHEAD
	1132	6	205.5			100/230		START LEAD CEMENT @ 11.4#
	1206	6	23.5			195		START TAIL CEMENT @ 1. 14.8#
	1211							THUR MIXING CEMENT AND SHUT DOWN
	1212							DROP TOP PLUG
	1213	6.0	113.0			0/100		START FRESH WATER DISPLACEMENT
	1218					75/200		DISPLACEMENT CAUGHT CEMENT
	1233					510/415		SLOW DOWN RATE
	1239					510/900		PLUG LANDED
	1240					900/0		RELEASE FLOAT

RECEIVED
OCT 0 9 2001
RCC: WICHITA

CIRCULATED 50 Bbls TO PIT

THANK YOU FOR CALLING HALLIBURTON
DANNY AND CREW

Release
NOV 04 2001
From
Confidential



Stages

KCC
 OCT 01 2001
 CONFIDENTIAL

Event Log								
1	Start Job	11:27:01	2	Test Lines	11:28:16	3	Pump Spacer 1	11:29:20
4	Pump Lead Cement	11:32:39	5	Pump Tail Cement	12:06:01	6	Pump Displacement	12:13:07
7	Bump Plug	12:39:17	8	End Job	12:40:08			

RECEIVED
 OCT 09 2001
 KCC WICHITA

Customer:	Job Date:	Ticket #:
Well Description:	UWI:	

HALLIBURTON
 CemWin v1.3.0
 16-Jun-01 12:41

Confidential
 From
 NOV 04 2003
 Release



JOB SUMMARY

SALES ORDER NUMBER 1367010	TICKET DATE 06/25/01
BDA / STATE KS	COUNTY STEVENS
PSL DEPARTMENT Cementing Services	CUSTOMER REP / PHONE ALAN HENNE
API/UWI #	SAP BOMB NUMBER 7523
Description Cement Production Casing	
HES FACILITY (CLOSEST TO WELL SITE) LIBERAL KS.	

REGION NORTH AMERICA LAND	NWA / COUNTRY USA
MBU ID / EMPL # MCL1 0113 198516	H.E.S EMPLOYEE NAME JASON CLEMENS
LOCATION HUGOTON	COMPANY ANADARKO PET KCC
TICKET AMOUNT \$10,648.19	WELL TYPE OIL
WELL LOCATION HUGOTON	DEPARTMENT ZI OCT 01 2001
LEASE NAME SHAFER	SEC / TWP / RNG 25-32S-39W
Well No. D-3	CONFIDENTIAL

HES EMP NAME / EMP # / (EXPOSURE HOURS)	HRS	HES EMP NAME / EMP # / (EXPOSURE HOURS)	HRS
JASON CLEMENS 198516	10.0	K. KING 105942	10.0
Garza, C 194445	10.0	L. WHITE	10.0

RECEIVED
OCT 09 2001

HES. LINT #S / (R / T MILES)	R / T MILES	HES. LINT #S / (R / T MILES)	R / T MILES
422207	100		
54218/78202	100		
10243558/75818	20		

Form. Name _____ Type: _____
 Form. Thickness _____ From _____ To _____
 Packer Type _____ Set At _____
 Bottom Hole Temp. _____ Pressure _____
 Retainer Depth _____ Total Depth _____

Date	Called Out	On Location	Job Started	Job Completed
	6/25/01	6/25/01	6/25/01	6/25/01
Time	0030	330	1305	1430

Type and Size	Qty	Make
Float Collar		
Float Shoe		HES
Centralizers	11	
Top Plug	1	
HEAD	1	
Limit clamp	1	
Weld-A	1	
Guide Shoe	1	
BTM PLUG		

	New/Used	Weight	Size	Grade	From	To	Max. Allow
Casing	N	15.5	5 1/2		0	6,330	
Liner							
Liner							
Tubing							
Drill Pipe							
Open Hole							Shots/Ft.
Perforations							
Perforations							
Perforations							

Materials		Density	Lb/Gal
Mud Type			
Disp. Fluid			
Prop. Type	Size		Lb
Prop. Type	Size		Lb
Acid Type	Gal.		%
Acid Type	Gal.		%
Surfactant	Gal.		in
NE Agent	Gal.		in
Fluid Loss	Gal/Lb		in
Gelling Agent	Gal/Lb		in
Fric. Red.	Gal/Lb		in
Breaker	Gal/Lb		in
Blocking Agent	Gal/Lb		
Perfpac Balls	Qty.		
Other			
Other			
Other			
Other			
Other			

Hours On Location		Operating Hours		Description of Job
Date	Hours	Date	Hours	
6/25	10.0	6/25	1.0	SEE JOB LOG
Total	10.0	Total	1.0	

Ordered	Hydraulic Horsepower	Used
	Avail.	
Treating	Average Rates in BPM	Overall
	Disp.	
Feet 42	Cement Left in Pipe	SHOE JOINT
	Reason	

Cement Data			Additives		W/Rq.	Yield	Lbs/Gal
Stage	Sacks	Cement	Bulk/Sks				
1	20	50/50 POZ H	BULK	10% SALT-.75 HALAD-1/8# POLY FLAKE	13.90	2.34	11.50
2	280	50/50 POZ H	BULK	10% SALT-.75 HALAD-1/8# POLY FLAKE	5.67	1.26	14.4

Summary			
Circulating Breakdown	Displacement	Preflush: BBI	Type:
Lost Returns-1	MAXIMUM	Load & Bkdn: Gal - BBI	Pad:Bbl -Gal
Cmt Rtn#Bbl	Loss Returns-1	Excess/Return BBI	Onic Disp Bbl
Average	Actual TOC	Calc. TOC:	Actual Disp.
Shut In: Instant	Frac. Gradient	Treatment: Gal - BBI	Disp:Bbl 147.00
	5 Min. 15 Min.	Cement Slurry BBI	LG 831063a
		Total Volume BBI	

THE INFORMATION STATED HEREIN IS CORRECT
 CUSTOMER REPRESENTATIVE _____
 SIGNATURE _____
From Confidential

RECEIVED

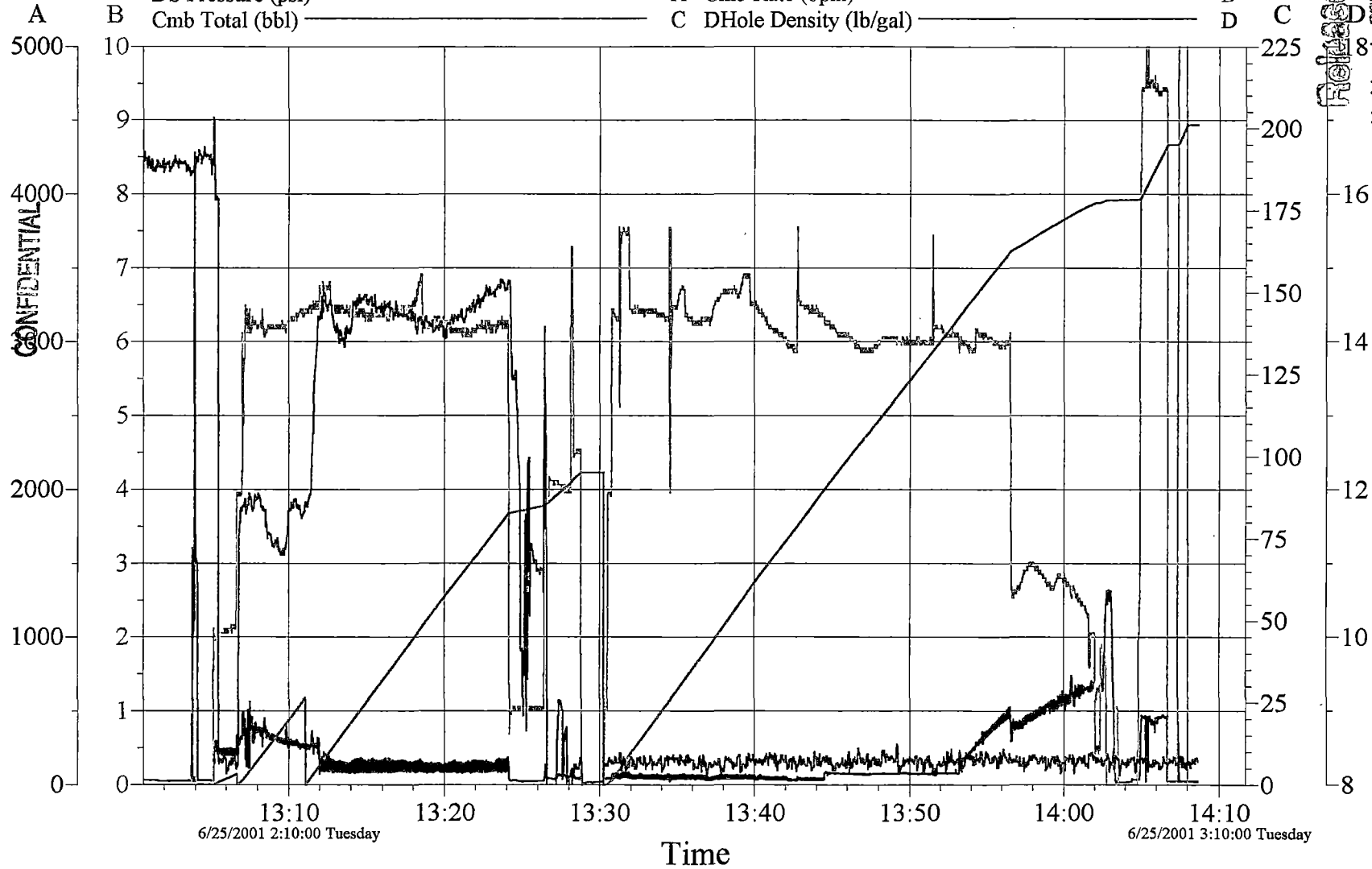
OCT 09 2001

KCC WICHITA

A DS Pressure (psi) _____ A Cmb Rate (bpm) _____ B
 B Cmb Total (bbl) _____ C DHole Density (lb/gal) _____ D C

KCC

OCT 01 2001



Release
 NOV 14 2003
 From
 Confidential

Customer:	Job Date:	Ticket #:
Well Description:	UWI:	

H HALLIBURTON
 CemWin v1.3.0
 25-Jun-01 14:21