

STATE OF KANSAS  
STATE CORPORATION COMMISSION

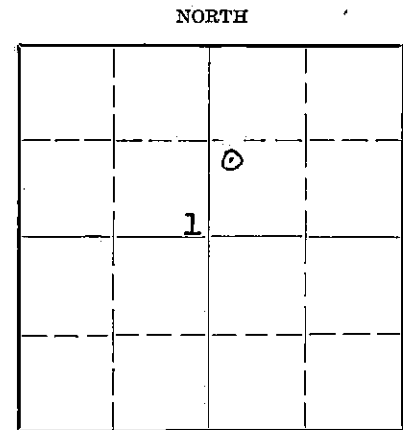
WELL PLUGGING RECORD

OR  
FORMATION PLUGGING RECORD

Strike out upper line  
when reporting plug-  
ging off formations.

Give All Information Completely  
Make Required Affidavit  
Mail or Deliver Report to:  
Conservation Division  
State Corporation Commission  
800 Bittling Building  
Wichita, Kansas

Reno County, Sec. 1 Twp. 23S Rge. 4 (W)  
Location as "NE $\frac{1}{4}$ NW $\frac{1}{4}$ SW $\frac{1}{4}$ " or footage from lines NW SW NE  
Lease Owner Shell Oil Company, Inc.  
Lease Name J. H. Goering Well No. 2  
Office Address Box 110, McPherson, Kansas  
Character of Well (completed as Oil, Gas or Dry Hole) Oil Well  
Date well completed 12 19.35  
Application for plugging filed 2-3 19.44  
Application for plugging approved 2-7 19.44  
Plugging commenced 1-19 19.44  
Plugging completed 2-9 19.44  
Reason for abandonment of well or producing formation Depleted  
If a producing well is abandoned, date of last production 8-1 19.43  
Was permission obtained from the Conservation Division or its agents before plugging was com-  
menced? Yes



Locate well correctly on above  
Section Plat

Name of Conservation Agent who supervised plugging of this well Ruel Durkee  
Producing formation Miss chat Depth to top 3253 Bottom 3358 Total Depth of Well 3358 Feet  
Show depth and thickness of all water, oil and gas formations.

OIL, GAS OR WATER RECORDS

CASING RECORD

Formation	Content	From	To	Size	Put In	Pulled Out
Miss chat	oil & gas	3253	3358	13"	304'	Left in hole
				7"	3263'	2333'

Describe in detail the manner in which the well was plugged, indicating where the mud fluid was placed and the method or methods used in introducing it into the hold. If cement or other plugs were used, state the character of same and depth placed, from \_\_\_\_\_ feet to \_\_\_\_\_ feet for each plug set.

3358' to 3260' PB with mud  
3260' to 3230' PB with cement  
3230' to 2400' PB with mud  
2400' to 300' PB with mud  
300' to 275' PB with cement  
275' to 10' PB with mud  
10' to 0' PB with cement

PLUGGING  
FILE 1-23-4W  
BOOK PAGE 107 LINE 20

STATE OF KANSAS  
MAY 2 1944  
3-29-44

(If additional description is necessary, use BACK of this sheet)

Correspondence regarding this well should be addressed to R. T. McNally, Sup't.  
Address Box 110, McPherson, Kansas

STATE OF Kansas, COUNTY OF Reno, ss.  
R. T. McNally (employee of owner) or (owner or operator) of the above-described well,

being first duly sworn on oath, says: That I have knowledge of the facts, statements, and matters herein contained and the log of the above-described well as filed and that the same are true and correct. So help me God.

(Signature) R. T. McNally

Box 110, McPherson, Kansas (Address)

SUBSCRIBED AND SWORN to before me this 27 day of March 19.44

J. S. White, Notary Public.

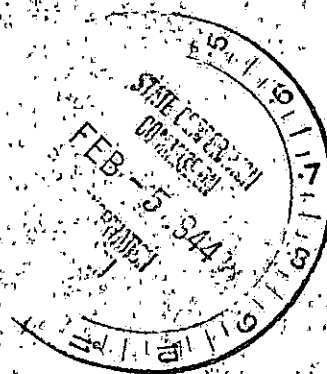
My commission expires Dec. 28th - 1946



CASING RECORD

<u>SIZE</u>	<u>WEIGHT</u>	<u>BOTTOM</u>	<u>COMPLETED:</u>	12-1935
7"	24#	3263'	<u>ELEVATION:</u>	1467'
13"	50#	304'	<u>TOTAL DEPTH:</u>	3358'

<u>DEPTH FROM</u>	<u>TO</u>	<u>FEET</u>	<u>FORMATION</u>
0	35		Sand & surface clay
35	160		Shale & sand
160	320		Shale
320	325		Shale
325	401		Shale
401	498		Shale & shells
498	510		Lime
510	763		Shale & lime
763	794		Lime
794	860		Lime & Shale
860	932		Lime
932	977		Shale & lime
977	1056		Lime & shale
1056	1137		Shale & lime streaks
1137	1220		Shale & lime
1220	1354		Shale & lime
1354	1385		Shale
1385	1438		Shale & lime
1438	1525		Shale
1525	1646		Lime & shale
1646	1721		Shale & shells
1721	1792		Shale
1792	1860		Shale & shells
1860	1945		Shale
1945	1995		Lime & shale
1995	2044		Broken lime & shale
2044	2172		Shale & lime
2172	2248		Shale
2248	2295		Shale & lime
2295	2396		Shale
2396	2450		Shale & lime
2450	2535		Shale & lime
2535	2594		Lime
2594	2747		Lime
2747	2771		Lime
2771	2883		Lime
2883	2996		Shale & lime
2996	3016		Lime
3016	3100		Lime & shale
3100	3253		Shale
3253	3265		Chat
3265	3253		Top of Chat
TD	3253		Chat

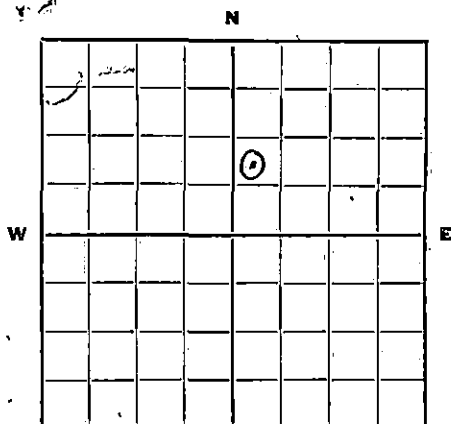


**PLUGGING**  
 FILE SEC 1-23940  
 BOOK PAGE 107 OF 20

# MATERIAL REPORT AND PLUGGING RECORD

Mail To: STATE CORPORATION COMMISSION  
Conservation Division  
800 Bitting Building  
Wichita, Kansas

NOTICE: All questions on this form must be answered.



Locate well correctly.

Company Operating Shell Oil Company, Inc.  
Office Address Box 110, McPherson, Kansas.

County Reno Sec. 1 Twp. 23-S Rge. 4-W

Farm Name J. H. Goering Well No. 2 Field Burrton Pool

Well Location NW- SW- NE

Name of Producing Sand Mississippi Chat Total Depth 3358

Commenced Plugging 1-19-44 Finished 2-9-44

DAILY AVERAGE PRODUCTION:

Initial Production: Oil 241 Gas 26 MCF Water 125

Production when Plugged: Oil 5-3/4 Gas 9 MCF Water 19

Estimated Total Remaining Reserves Attributable to Well at Time Abandoned 4700 Bbls.

### INFORMATION ON MATERIALS RECLAIMED FROM WELL

#### CASING, TUBING AND ROD DATA

Description	Size	Recovered		Junk		Reusable		Disposition Made Or To Be Made Of Usable Material
		Ft.	Tons	Ft.	Tons	Ft.	Tons	
Casing	7"OD	2333'	28			2333'	28	Operations in Kansas
Tubing	2 1/2"	3343'	11			3343'	11	Operations in Kansas
Rods	3/4"	3300'	2 1/2			3300'	2 1/2	Operations in Kansas

#### SURFACE EQUIPMENT

Quantity	Description	*Condition	Est. Tons	Disposition Made Or To Be Made Of Reclaimed Material
1	94' Pksbg. Derrick	Usuable	12	Sold to Continental Oil Co. <sup>Geneseo, Kansas.</sup> Operations in Kansas.
2	110 Bbl. Steel Tanks	Usuable	2	
1	25-H.P. Superior Gas Engine	Usuable	2	Operations in Kansas.
1	95-F-6 OCS Rig Front	Usuable	5	Operations in Kansas.
1070'	2" Line Pipe.	Usuable	2	Operations in Kansas.
1876'	4" Line Pipe.	Usuable	10	Operations in Kansas.
1 Lot,	Misc'l. Material	Junk	8	District Junk

\* Usable, Usable with minor repairs, or junk.

Date: February 17, 1944

Signed: R. M. Kelly Supt.  
(For Operating Co.—Title)

FORM—FP-1

**PLUGGING**  
FILE SER. 1-23244  
BOOK PAGE 107 LINE 20

(See note on reverse side)

19-6758 8-43-5M.

FEB 20

It is very important that all questions on this form be answered, as this Department has been asked by the Petroleum Administration for War to supply data on well abandonments undertaken during the war.

**This information is very essential in aiding the war effort; therefore, this Department is requiring this report to be mailed within 5 days after the abandonment of your well.**

19-8756