

STATE OF KANSAS
STATE CORPORATION COMMISSION
200 Colorado Derby Building
Wichita, Kansas 67202

WELL PLUGGING RECORD
K.A.R.-82-3-117

15-155-02816-0006
API NUMBER N/A

LEASE NAME Neufeldt

WELL NUMBER 2

SPOT LOCATION SW NW NW

SEC. 12 TWP. 23S RGE. 4 ~~W~~ or (W)

COUNTY Reno, Kansas

Date Well Completed 3-24-35

Plugging Commenced 8-26-85

Plugging Completed 8-28-85

LEASE OPERATOR Producers Oil Company

ADDRESS 711 Philtower Building

PHONE (918) 582-1188 OPERATORS LICENSE NO. 5235

Character of Well SWD
(Oil, Gas, D&A, SWD, Input, Water Supply Well)

Did you notify the KCC/KDHE Joint District Office prior to plugging this well? Yes

Which KCC/KDHE Joint Office did you notify? Dist. 2, Suite 2, Century Plaza Bldg. 111 W. Douglas
Wichita, Kan. 67202

Is ACO-1 filed? NO If not, is well log attached? Yes

Producing formation Mississippi Chat Depth to top 3381 bottom 3390 T.D. 3621

Show depth and thickness of all water, oil and gas formations.

OIL, GAS OR WATER RECORDS

CASING RECORD

Formation	Content	From	To	Size	Put in	Pulled out
Miss. Chat	Oil	3360	3369			
Hunton Lime	Oil	3610	3621	12 1/2	293	NONE
				6 5/8	3614	NONE
				4 1/2	3024	NONE

Describe in detail the manner in which the well was plugged, indicating where the mud fluid was placed and the method or methods used in introducing it into the hole. If cement or other plugs were used state, the character of same and depth placed, from feet to feet each set. Washed down thru 4 1/2' casing to 155', top of 2 7/8" tubing. Ran releasing spear, could not jar loose @ 60,000 psi. Ran sinker bar into 2 7/8" to 350'. Press. to 750 psi, could not pump into tubing or casing. Ran tubing cutter and severed tubing @ 347'. Ran overshot and could not pull. Pumped down tubing had 100% circ. to surface. Perf. tubing 346 1/2 w/ 6 holes, injected water @ rate of 6 B/M @ 250 psi. Howco cemented down 4 1/2 casing w/ 250 sax reg. cement w/ 3% CaCl2 @ 300 to 270 psi, pumped 1/8 bbl water @ 175 psi to clear
(If additional description is necessary, use BACK of this form.) (SEE REVERSE)

Name of Plugging Contractor Gressel Oil Field Service, Inc. License No. 5823
Address Box 286, Burton, Kansas 67020

STATE OF Kansas COUNTY OF Reno, ss.

R.E. Couch (employee of operator) or (operator) of above-described well, being first duly sworn on oath, says: That I have knowledge of the facts, statements, and matters herein contained and the log of the above-described well as filed that the same are true and correct, so help me God.

STATE CORPORATION COMMISSION

(Signature) R.E. Couch

(Address) 711 Philtower Building,

Tulsa, Oklahoma 74103

SUBSCRIBED AND SWORN TO before me this 10 day of September, 1985

CONSERVATION DIVISION
Wichita, Kansas

Jane Lynn Jackson
Notary Public

My Commission expires: MY COMMISSION EXPIRES MAY 21, 1986

(Con't.)

surface valve. Job complete @ 6:00 p.m. 2/28/85. Well now P & A. Job witnessed by Mr. Don Thompson, representative for Kansas Corporation Commission.

15-155-02816-0000

PRODUCERS OIL COMPANY

DAILY REPORT

NEUFELDT #2
SW NW NW SECTION 12-T235-R4W
RENO COUNTY, KANSAS

T.D. 3621 ft.
12½" @ 293 ft.
6 5/8" @ 3614
4½" @ 3024 ft. cemented to surface
Perf. 3360-69 ft. and 3381-90 ft. in Miss. Chat for SWD well
2 7/8" tubing pulled off, could not fish out. Approx date,
June 1975.
Will plug and abandon.

8/26/85 PBTD 3617 ft. MIRUDDPU (Gresell). Ran 2 3/8" EUE tubing, hit
bridge 10' below surface. Rigged up reverse circulator and ran
3 3/4" bit on 2 3/8" tubing, washed down to 155'. Ran impression
block and imprint, showed pin end of 2 7/8" tubing looking up.
Attempted to screw onto 2 7/8" tubing. Could not engage fish.

8/27/85 PBTD 3617 ft. Ran 2½" releasing spear and latched into tubing,
pulled 60,000 psi but could not move tubing. Pulled spear and
ran 2 3/8" tubing with 2 7/8" collar on bottom, got collar over
fish and ran sinker bar inside tubing to 350'. Pulled tubing and
rigged up circulating pump. Tied onto 4½" casing and pressured
to 750 psi, could not pump water into tubing or casing-tubing an-
nulus. Ran 1 11/16" Calipher to 348' inside 2 7/8" tubing, pulled
out and ran tubing cutter to 347' and severed tubing. Ran 2½"
overshot and engaged tubing, could not pull. Tied circulating
pump onto tubing and had 100% circulation. Had trouble getting
overshot to release, had to run string shot to get overshot loose.
Pressured down tubing and annulus, well would not take fluid @
750 psi.

8/28/85 PBTD 3617 ft. Perforated tubing @ 346½ to 348' with 6 holes.
Rigged up circulating pump and injected water @ rate of 6 BBL p/min
@ 250 psi. Rigged up HOWCo and cemented down 4½" casing with 250
sax of reg. cement with 3% CaCl₂, staged as follows:

Pumped water to establish pump rate of 4½ BBL p/min @ 275 psi.

Mixed and pumped 100 sax @ 300 psi, SD 24 min.
Mixed and pumped 50 sax @ 200 psi, SD 24 min.
Mixed and pumped 50 sax @ 200 psi, SD 40 min.
Mixed and pumped 25 sax @ 250 psi, SD 45 min.
Mixed and pumped 25 sax @ 275 psi,

pumped 1/8 BBL water @ 175 psi to clear surface valve. Job complete-
ed @ 6:00 p.m., 8/28/85. Well now P & A.

Job witnessed by Don Thompson, representative for Kansas Corporation
Commission. Job Complete.

RECEIVED
STATE CORPORATION COMMISSION

SEP 3 0 1985

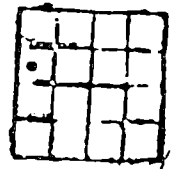
CONSERVATION DIVISION
Wichita, Kansas

LEDO OIL COMPANY.
 Neufeldt No. 2.

SEC. 12 T. 23 R. 4W.
 SW NW NW

Total Depth. 3621.
 Com. 2-24-35 Comp. 3-24-35
 Shot or Treated.
 Contractor. Rose Spring Brilling Co.
 Issued. 6-15-35.

County. Reno.



Elevation. 1484

CASINE.
 12 3/8" 293'
 65/8" 3614'
 4 1/2 3024

Production. Pot. 1496 B.

Figures Indicate Bottom of Formations

surface sand	191	lime	2760
shale	435	shale hard and lime	2766
shale and gyp	510	shale blk	2770
salt and gyp	575	lime	2863
shale	650	lime hard	2894
sand and shale & shells	735	lime	2910
shale and shells	845	shale	2920
shale lime shells	990	lime	2985
broken lime	1155	shale blk	2997
lime	1230	lime hard	3012
broken lime	1272	shale blk	3048
shale and shells	1360	shale hard	3100
shale	1486	shale	3127
shale and shells	1535	shale hard	3150
lime	1546	hard sticky shale	3180
shale and shells	1568	shale	3258
shale	1580	chat	3387 <i>chat part 3381-90</i>
broken lime	1755	lime	3404 <i>W. 24 holes</i>
shale and shells	1843	chat	3423
lime	1899	lime and chat	3436
shale	1920	lime	3485
lime	1948	shale	3491
broken lime	1960	limo	3510
shale hard	2003	shale	3610 <i>1" @ 3614</i>
broken lime	2023	limo	3621
broken shale	2067	Total Depth.	
lime	2091		
shale hard & shells	2140		
limo	2170		
shale hard and shells	2295		
lime	2305		
shale	2320		
broken lime	2349		
shy shale	2475		
broken lime & sticky			
shale	2520		
lime	2558		
broken lime	2589		
shale hard & lime shells	2645		
shale hard	2690		
shale	2725		
shy shale	2735		

*Well had been drilled to 3621
 and plugged back to Miss Chat
 7-18-37 to 9-15-37 (see attached)*

RECEIVED
 STATE CORPORATION COMMISSION

SEP 3 0 19 35

CONSERVATION DIVISION
 Wichita, Kansas

RECEIVED
 STATE CORPORATION COMMISSION

APR 06 1984

CONSERVATION DIVISION
 Wichita, Kansas

WELL LOG BUREAU - KANSAS GEOLOGICAL SOCIETY.
 Union National Bank Bldg, Wichita, Kansas

COPY

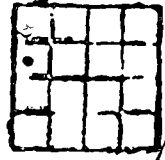
15-155-02816-0000

LEDO OIL COMPANY.
 Neufeldt No. 2.

SEC. 12 T. 23 R. 4N.
 SW NW NW

Total Depth. 3621.
 Comm. 2-24-35 Comp. 3-24-35
 Shot or Treated.
 Contractor. Rose Spring Drilling Co.
 Issued. 6-15-35.

County. Reno.



CASING.
 12 3/4" 293'
 65/8" 3614'

Elevation. 1484

Production. Pot. 1496 B.

Figures Indicate Bottom of Formations

surface sand	191	lime	2760
shale	435	shale hard and lime	2766
shale and gyp	510	shale blk	2770
salt and gyp	575	lime	2863
shale	650	lime hard	2894
sand and shale & shells	735	lime	2910
shale and shells	845	shale	2920
shale lime shells	990	lime	2985
broken lime	1155	shale blk	2997
lime	1230	lime hard	3012
broken lime	1272	shale blk	3048
shale and shells	1360	shale hard	3100
shale	1486	shale	3127
shale and shells	1535	shale hard	3150
lime	1546	hard sticky shale	3180
shale and shells	1568	shale	3258
shale	1580	chat	3387 <i>chat part. 3381-90 w. 24 holes</i>
broken lime	1755	lime	3404
shale and shells	1843	chat	3423
lime	1899	lime and chat	3436
shale	1920	lime	3485
lime	1948	shale	3491
broken lime	1960	lime	3510
shale hard	2003	shale	3610 <i>1" C 3614</i>
broken lime	2023	lime	3621
broken shale	2067	Total Depth.	
lime	2091		
shale hard & shells	2140		
lime	2170		
shale hard and shells	2295		
lime	2305		
shale	2320		
broken lime	2349		
shy shale	2475		
broken lime & sticky			
shale	2520		
lime	2558		
broken lime	2589		
shale hard & lime shells	2645		
shale hard	2690		
shale	2725		
shy shale	2735		

*Well had been drilled to 3621
 and plugged back to Miss Chat
 7-18-37 to 9-15-37 (see attached)*

RECEIVED
 STATE CORPORATION COMMISSION

APR 06 1984

CONSERVATION DIVISION
 Wichita, Kansas