

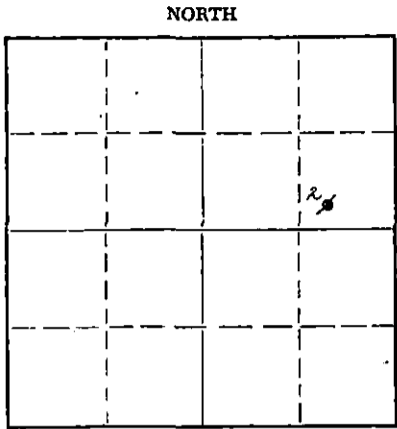
15095-01549-0000

STATE OF KANSAS
STATE CORPORATION COMMISSION

Form CP-4

Give All Information Completely
Make Required Affidavit
Mail or Deliver Report to:
Conservation Division
State Corporation Commission
211 No. Broadway
Wichita, Kansas

WELL PLUGGING RECORD



Locate well correctly on above
Section Plat

Kingman County. Sec. 29 Twp. 28S Rge. (E) 5W (W)
Location as "NE/CNW/SW" or footage from lines. SW. SE NE
Lease Owner Lario Oil & Gas Company
Lease Name Beck Well No. 2
Office Address 301 S. Market, Wichita, Kansas 67202
Character of Well (completed as Oil, Gas or Dry Hole) Oil
Date well completed October 30 1958
Application for plugging filed September 16 1965
Application for plugging approved September 17 1965
Plugging commenced September 30 1965
Plugging completed October 4 1965
Reason for abandonment of well or producing formation Depleted

If a producing well is abandoned, date of last production June 15 1963
Was permission obtained from the Conservation Division or its agents before plugging was commenced? Yes

Name of Conservation Agent who supervised plugging of this well A. Elving, Box 248, Pratt, Kansas
Producing formation Mississippi Chert Depth to top 3862 Bottom Total Depth of Well 3950 Feet
Show depth and thickness of all water, oil and gas formations.

OIL, GAS OR WATER RECORDS

CASING RECORD

FORMATION	CONTENT	FROM	TO	SIZE	PUT IN	PULLED OUT
				10 3/4"	273.07	None
				7"	3967.23 Set @ 3949'	Pulled 2530'

Describe in detail the manner in which the well was plugged, indicating where the mud fluid was placed and the method or methods used in introducing it into the hole. If cement or other plugs were used, state the character of same and depth placed, from _____ feet to _____ feet for each plug set.

Sand from 3900' to 3875'. 5 sacks cement 3875' to 3850'. Set plug at 300', rock bridge to 290'. 30 sacks cement from 290' to 230'. Mud from 230' to 40', rock and 15 sacks cement to base of cellar.

RECEIVED
STATE CORPORATION COMMISSION

OCT 14 1965
10-14-65
CONSERVATION DIVISION
Wichita, Kansas

(If additional description is necessary, use BACK of this sheet)
Name of Plugging Contractor Glenn & Smith Pipe Pulling
Address Box 156, Ellinwood, Kansas

STATE OF Kansas, COUNTY OF Sedgwick, ss. Leo L. Ross (employee of owner) or (owner or operator) of the above-described well, being first duly sworn on oath, says: That I have knowledge of the facts, statements, and matters herein contained and the log of the above-described well as filed and that the same are true and correct. So help me God.

(Signature) Leo L. Ross
301 S. Market, Wichita, Kansas 67202 (Address)

SUBSCRIBED AND SWORN to before me this 13th day of October, 1965

My commission expires July 21, 1966

Frances Leslie
Notary Public.

15095-01549-0000

LARIO OIL & GAS COMPANY
No. 2 Beck
SW SE NE Sec. 29-28S-5W
Kingman County, Kansas

RECEIVED
STATE CORPORATION COMMISSION

SEP 17 1965

CONSERVATION DIVISION
Wichita, Kansas

Drilling Commenced: October 10, 1958
Drilling Completed: October 22, 1958
Well Completed: October 30, 1958
Drilling Contractor: Gabbert-Jones Drilling Co.
Total Depth - 3950'
I.P. - 26 oil plus 85% water 24 hour physical

Casing Record:

10 3/4" 273.07' Set @ 285'
Cem. w/ 250 sacks
7" 3967.23' Set @ 3949'
Cem. w/ 100 sacks

Formation	Depth
Red rock	45
Red bed & shells	287
Shale	425
Shale & shells	750
Anhydrite	785
Shale & lime	1010
Lime	1420
Shale & shells	1595
Lime & shale	1925
Shale & shells	2135
Shale & lime	2480
Shale	2500
Lime & shale	2605
Lime	2755
Lime, broken	2850
Shale & lime	2895
Shale	3000
Shale & lime	3079
Shale	3100
Broken lime & shale	3170
Lime	3525
Shale & lime	3585
Lime & shale	3800
Shale	3862
Chat	3886
Lime	3910
Shale	3950

GEOLOGICAL TOPS:

Elevation	1421 D.F.	1424 R.B.
Heebner	2762	-1338
Brown lime	3002	-1578
Lansing	3099	-1675
Kansas City	3257	-1833
Base Kansas City	3500	-2056
Marmaton	3561	-2137
Cherokee	3683	-2259
Conglomerate	3844	-2420
Mississippi Chert	3862	-2438
Mississippi Shaly Dolomite	3888	-2464
Mississippi Lime	3898	-2474
Rotary T.D.	3950	-2526

10-25-58 Perf. 30 shots 3867-3882 by Welox.
10-26-58 Acidized w/ 500 gallons MCA acid by Halliburton.
10-28-58 Halliburton fraced w/ 15,000 gallons lease oil and 15,000# 20/40 sand and 30 ball sealers.
12-9-58 Physical potential 26 oil plus 85% water 24 hours.
12-13-58 Doc squeezed w/ 75 sacks to squeeze off water.