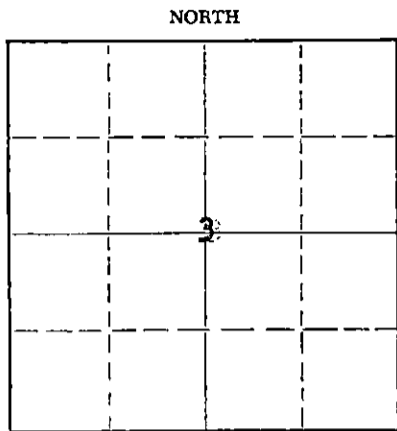


Give All Information Completely
Make Required Affidavit
Mail or Deliver Report to:
Conservation Division
State Corporation Commission
212 North Market, Insurance Bldg.
Wichita, Kansas

WELL PLUGGING RECORD



Locate well correctly on above Section Plat

Reno County, Sec. 3 Twp. 24S Rge. 4W (E) (W)
Location as "NE/CNW/SW" or footage from lines 330' from N&E lines of ~~NE/NE/NE~~
Lease Owner Sinclair Oil & Gas Company (NW/NE//NE)
Lease Name Mary A. Collins Well No. 1
Office Address Box 521, Tulsa, Oklahoma
Character of Well (completed as Oil Gas or Dry Hole) Oil
Date well completed 1-23-36 19
Application for plugging filed 10-3-60 19
Application for plugging approved 2-16-60 19
Plugging commenced ~~2-17-61~~ 2-21-61 19
Plugging completed 2-23-61 19
Reason for abandonment of well or producing formation Depleted - Unprofitable to Operate
If a producing well is abandoned, date of last production 12-16-1960 19
Was permission obtained from the Conservation Division or its agents before plugging was commenced? Yes

Name of Conservation Agent who supervised plugging of this well Fred W. Hampel
Producing formation Mississippi Depth to top 3292 Bottom 3357 Total Depth of Well 3606 Feet
Show depth and thickness of all water, oil and gas formations.

OIL, GAS OR WATER RECORDS

CASING RECORD

FORMATION	CONTENT	FROM	TO	SIZE	PUT IN	PULLED OUT
Hunton		3263	3506	8 1/2	3595	357'
Mississippi		3292	3357			

Describe in detail the manner in which the well was plugged, indicating where the mud fluid was placed and the method or methods used in introducing it into the hole. If cement or other plugs were used, state the character of same and depth placed, from _____ feet to _____ feet for each plug set.

Plugged from Plugback TD 3420' to 3280' with sand and 5 sacks cement plug on top of sand to 3280' - From 3280' to 270' with heavy drilling mud, from 270' to 240' with 25 sacks cement, from 240' to 20' with heavy drilling mud, from 20' ~~DOWN~~ to surface with 15 sacks cement. Hole completed plugging and abandoning at 6:PM 2-23-61.

RECEIVED
STATE CORPORATION COMMISSION

FEB 27 1961

CONSERVATION DIVISION
Wichita, Kansas

2-27-61

(If additional description is necessary, use BACK of this sheet)
Name of Plugging Contractor Knight Casing Pulling Company
Address Chase, Kansas

STATE OF Kansas, COUNTY OF Rice, ss.
Carl E. Most (employee of owner) or (owner or operator) of the above-described well, being first duly sworn on oath, says: That I have knowledge of the facts, statements, and matters herein contained and the log of the above-described well as filed and that the same are true and correct. So help me God.

(Signature) Carl E. Most Dist. Supt.
P. O. Box 466, Chase, Kansas (Address)

SUBSCRIBED AND SWORN TO before me this 24th day of February, 1961

L. B. Reynolds
L. B. Reynolds Notary Public

My commission expires August 13, 1962

WELL LOG BUREAU - KANSAS GEOLOGICAL SOCIETY.
 Union National Bk Bldg, Wichita, Kansas.,

SINGULAR PRAIRIE OIL CO.
 M.A. Collins No. 1.

3 24 40
 SEC. 3 T. 24 R. 4W.
 NE NW SW
 330' fr NE 350' fr E.L. $\frac{1}{2}$ SW $\frac{1}{2}$

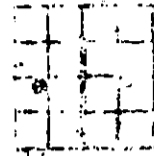
PERFORATION RECORD

Total Depth. 3605 $\frac{1}{2}$
 Comm. 12-9-35 Comp. 2-14-36.
 Shot or Treated.
 Contractor, Parker Drilg Co.
 Issued. 7-11-42

County. Nowy.

G.SING.

15 $\frac{1}{2}$ " 245' 8 $\frac{1}{4}$ " 3595'



Elevation.

Production. Pot. 1077 B.

Figures Indicate Bottom of Formations.

cellar	10	broken lime	2970
sand water	190	lime	2995
lime	215	shale and lime	3005
shale sticky	248	lime	3055
shale shells	500	shale sticky	3090
lime broken	785	shale lime shells	3140
lime	875	shale and shells	3195
sand sdy lime	950	shale lime shells	3250
shale and lime	975	shale	3256
shale sand lime	1065	broken lime	3263
lime broken	1220	chat	3460
shale and shells	1265	shale	3475
shale and lime	1365	lime brown	3505
broken lime	1400	lime	3506
shale and shells	1585	shale	3520
shale and lime	1870	lime	3550
shale and shells	1940	shale	3594
shale	1970	sand Misner	3595
lime	2020	lime	3605 $\frac{1}{2}$
broken lime	2110	Total Depth.	
shale and lime	2190		
lime	2260	Top of Miss	3263
broken lime	2400	Top of Hunton	3595
lime	2465		
broken lime and shale	2550	<u>PERFORATION RECORD:</u>	
broken lime	2655	Comm. 12-18-41 Comp. 3-1-42	
lime	2660	Last prod. no oil, 250 BW	
broken lime	2810	Lane shells plug at 3420	
lime	2870	Perf. w/ 35 shots 3330-57.	
lime	2900	12 shots for g s 3292-3303	
lime	2918	Est. 100,000 cu ft	
broken lime & shale	2950	Est. 45 BC, 4 BW	