

TYPE

NOTICE OF INTENTION TO DRILL

C-1

TO BE FILED WITH THE STATE CORPORATION COMMISSION
PRIOR TO COMMENCEMENT OF WELL

API Number 15-095-20,342
(For office use only)
-0000

1. Operator National Cooperative Refinery Ass'n.

Starting Date May 6, 1974

Address 706 First Nat'l. Center, Okla. City, 73102

County Kingman

2. Contractor H-30, Inc.

Sec 17 Twp 28 S Rge 9 W

Address 200 N. Main, Wichita, Kansas 67202

Spot Location C SE/4 SE/4

3. Type of Equipment: Rotary XX Cable Tool _____

Nearest Lease Line 660 ft.

4. Well to be Drilled for: Oil XX Gas _____

Lease Name Allbritten

Disposal _____ Input _____ Other _____

5. Depth of Deepest Fresh Water within 1 mile 100 ft.

6. Depth of Municipal Water Well within 3 miles None ft.

7. Depth to Protect all Fresh Water 120 ft.

8. Amount of Surface Casing to be set 275 ft.

9. Alternate No. 1 XX No. 2 _____

Est. Total Depth 4550 ft.

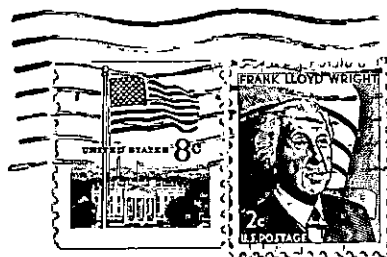
REMARKS:

OPERATOR STATES THAT HE WILL COMPLY WITH K. S. A. 55-128

Signature of Operator _____

C. R. Moore
C. R. Moore, District Superintendent





**State Corporation Commission of Kansas
Conservation Division
P. O. Box 17027
Wichita, Kansas 67217**

**RECEIVED
STATE CORPORATION COMMISSION
MAY 3 - 1974
CONSERVATION DIVISION
Wichita, Kansas**

(IF PREFERRED, MAIL IN ENVELOPE)