

15-083-26667-0000

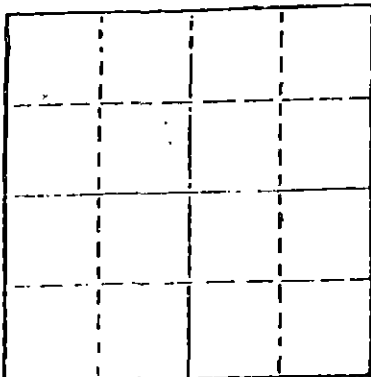
STATE OF KANSAS
STATE CORPORATION COMMISSION

WELL PLUGGING RECORD

Give All Information Completely
Make Required Affidavit
Mail or Deliver Report to
Conservation Division
State Corporation Comm.
245 North Water
Wichita, KS 67202

Hodgeman County. Sec. 36 Twp. 24S Rge. 22W E/W
Location as "NE/CNW 1/4 SW 1/4" or footage from lines
C SW NW

Lease Owner Antares Oil Corporation
Lease Name #1 Frank Hoffman Well No. 1
Office Address 1660 Lincoln St, Room 1530, Denver, Colo. 80264
Character of Well (Completed as Oil, Gas or Dry Hole) _____



Locate well correctly on above
Section Plot

Dry Hole
Date Well completed August 1, 1979 19
Application for plugging filed August 1, 1979 19
Application for plugging approved August 1, 1979 19
Plugging commenced 3:30 PM, August 1, 1979 19
Plugging completed 5:30 PM, August 1, 1979 19
Reason for abandonment of well or producing formation _____

Dry Hole
If a producing well is abandoned, date of last production, _____ 19

Was permission obtained from the Conservation Division or its agents before plugging was commenced? Yes

Name of Conservation Agent who supervised plugging of this well Clarence Thomas, Jr.
Producing formation _____ Depth to top _____ Bottom _____ Total Depth of Well 4831'
Show depth and thickness of all water, oil and gas formations.

OIL, GAS OR WATER RECORDS

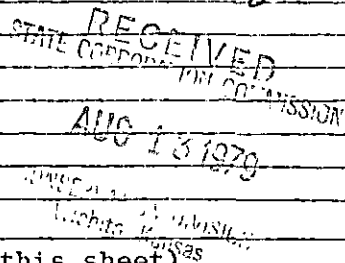
CASING RECORD

FORMATION	CONTENT	FROM	TO	SIZE	PUT IN	PULLED OUT
				8 5/8"	342'	None

Describe in detail the manner in which the well was plugged, indicating where the mud fluid was placed and the method or methods used in introducing it into the hold. If cement or other plugs were used, state the character of same and depth placed, from _____ feet to _____ feet for each plug set, _____

Filled hole with heavy mud.
Heavy mud to 900', 60 sacks at 900'.
Heavy mud to 360, 35 sacks at 360'.
Heavy mud to 40', plug and 1/4 sacks hulls,
10 sacks 0 to 40'. 5 sacks in rathole.
5 sacks in mousehole.

8-13-79



(If additional description is necessary, use BACK of this sheet)

Name of Plugging Contractor Sterling Drilling Company, P. O. Box 129, Sterling, Kansas 67579

STATE OF KANSAS COUNTY OF RICE, ss.
F. A. Wuellner (employee of owner) or (owner or operator)

of the above-described well, being first duly sworn on oath, says: That I have knowledge of the facts, statements, and matters herein contained and the log of the above-described well as filed and that the same are true and correct. So help me God.

(Signature) [Signature]
F. A. Wuellner, Secretary
P. O. Box 129, Sterling, Kansas 67579
(Address)

SUBSCRIBED AND SWORN TO before me this 2nd day of August, 19 79.



[Signature]
Charles M. Hall, Notary Public.

My commission expires _____

STERLING DRILLING COMPANY
P. O. Box 129
Sterling, Kansas 67579

WELL LOG - - - - - #1 FRANK HOFFMAN
Located: C SW NW, Section 36-24S-22W, Hodgeman County,
Kansas.

OWNER: Antares Oil Corporation
ROTARY DRILLING CONTRACTOR: Sterling Drilling Company

COMMENCED: July 21, 1979
COMPLETED: August 1, 1979

TOTAL DEPTH: 4831'

<u>LOG</u>	
0 - 120	Sand and Gravel
120 - 344	Shale
344 - 1275	Shale with Lime Stks.
1275 - 2800	Lime and Shale
2800 - 2920	Lime
2920 - 3239	Lime and Shale
3239 - 3355	Lime
3355 - 3568	Lime and Shale
3568 - 3710	Lime
3710 - 4139	Lime and Shale
4139 - 4258	Lime
4258 - 4620	Lime and Shale
4620 - 4713	Lime
4713 - 4748	Lime and Shale
4748 - 4831	Lime

CASING RECORD

Ran 8 joints 8 5/8" casing, 329.04' set
at 342' K.B. Cemented with 225 sacks
60/40 Pozmix with 3% cc. Plug down at
5:30 PM, 7-21-79.

Plugged.

RECEIVED
STATE CORPORATION COMMISSION

AUG 13 1979

DIVISION
Wichita, Kansas