

TYPE

NOTICE OF INTENTION TO DRILL

G-1
M-1331

TO BE FILED WITH THE STATE CORPORATION COMMISSION
PRIOR TO COMMENCEMENT OF WELL

API Number 15-095-20,935-
(For office use only) 0000

- Operator Robert E. Campbell
Suite 110; 260 N. Rock Road
Address Wichita, Kansas 67206
- Contractor Eagle Drilling, Inc.
Suite 210; 260 N. Rock Road
Address Wichita, Kansas 67206
- Type of Equipment: Rotary XX Cable Tool _____
- Well to be Drilled for: Oil XX Gas _____
Disposal _____ Input _____ Other _____
- Depth of Deepest Fresh Water within 1 mile _____ 100 ft.
- Depth of Municipal Water Well within 3 miles _____ None ft.
- Depth to Protect all Fresh Water _____ 200 ~~150~~ ft.
- Amount of Surface Casing to be set _____ 225 ft.
- Alternate No. 1 X No. 2 _____

Starting Date February 12, 1980

County Kingman

Sec 8 Twp 29S S Rge 6 ^EW

Spot Location 150' W of C SW/4

Nearest Lease Line _____ 1,320 ft.

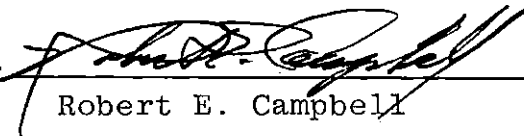

Lease Name Anna Kaufman

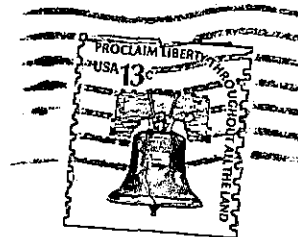
Well No. 1

Est. Total Depth _____ 4550 ft.

REMARKS:

OPERATOR STATES THAT HE WILL COMPLY WITH K. S. A. 55-128

Signature of Operator 
Robert E. Campbell 



**State Corporation Commission of Kansas
Conservation Division
245 North Water
Wichita, Kansas 67202**

RECEIVED
STATE CORPORATION COMMISSION

FEB 14 1980
02-14-80
CONSERVATION DIVISION
WICHITA, KANSAS

(IF PREFERRED, MAIL IN ENVELOPE)