

TYPE

NOTICE OF INTENTION TO DRILL

C-1

**TO BE FILED WITH THE STATE CORPORATION COMMISSION
PRIOR TO COMMENCEMENT OF WELL**

API Number 15-095-20,462-
(For office use only) 00.00

1. Operator SeRoBee & Shaffer
Address 256 No. Topeka Wichita, Kans. ⁷¹ 67202
2. Contractor D.N.B. Drlg. Co
Address 701 First Nat. Bk. Wichita, Kans.
3. Type of Equipment: Rotary Cable Tool _____
4. Well to be Drilled for: Oil Gas _____
Disposal _____ Input _____ Other _____
5. Depth of Deepest Fresh Water within 1 mile 120 ft.
6. Depth of Municipal Water Well within 3 miles None ft.
7. Depth to Protect all Fresh Water 150 ft.
8. Amount of Surface Casing to be set 210 ft.
9. Alternate No. 1 No. 2

Starting Date Feb. 29, 1976

County Kingman

Sec 35 Twp 29 S Rge 7 ^K W

Spot Location N/2 NE SW

Nearest Lease Line 330 ft.

Lease Name Etta Hibbs

Well No. 1

Est. Total Depth 4200 ft.

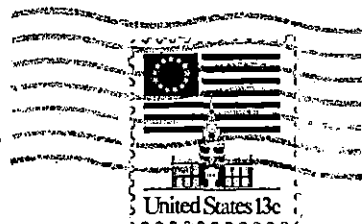
REMARKS:

OPERATOR STATES THAT HE WILL COMPLY WITH K. S. A. 55-128

Signature of Operator Lee Poulsen

(AGENT) 





State Corporation Commission of Kansas
Conservation Division
P. O. Box 17027
Wichita, Kansas 67217

RECEIVED
STATE CORPORATION COMMISSION

FEB 17 1976
2-17-76
CONSERVATION DIVISION
Wichita, Kansas

(IF PREFERRED, MAIL IN ENVELOPE)