

TYPE

NOTICE OF INTENTION TO DRILL

C-1

TO BE FILED WITH THE STATE CORPORATION COMMISSION
PRIOR TO COMMENCEMENT OF WELL

API Number 15-095-20,339
(For office use only) 0000

1. Operator Anadarko Production Company

Starting Date April 27, 1974

Address Box 351, Liberal, Kansas 67901

County Kingman

2. Contractor Sweetman Drilling

Sec 27 Twp 29 S Rge 10W ^E W

Address Wichita, Kansas

Spot Location C NW NW

3. Type of Equipment: Rotary X Cable Tool _____

Nearest Lease Line 660 ft.

4. Well to be Drilled for: Oil X Gas _____

Lease Name Spade "A"

Disposal _____ Input _____ Other _____

5. Depth of Deepest Fresh Water within 1 mile None ft.

Well No. 1

6. Depth of Municipal Water Well within 3 miles None ft.

7. Depth to Protect all Fresh Water 200 ft.


Est. Total Depth 4600 ft.

8. Amount of Surface Casing to be set 360 ft.

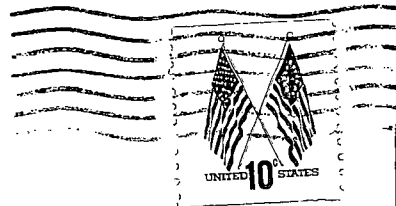
9. Alternate No. 1 X No. 2 _____

REMARKS:

OPERATOR STATES THAT HE WILL COMPLY WITH K. S. A. 55-128

Signature of Operator T. W. Williams
T. W. Williams 





**State Corporation Commission of Kansas
Conservation Division
P. O. Box 17027
Wichita, Kansas 67217**

**RECEIVED
STATE CORPORATION COMMISSION
APR 24 1974
CONSERVATION DIVISION
Wichita, Kansas**

(IF PREFERRED, MAIL IN ENVELOPE)