

TYPE OR PRINT

NOTICE OF INTENTION TO DRILL

C-1

15-095-20,083

15-095-20083-0000

TO BE FILED WITH THE STATE CORPORATION COMMISSION PRIOR TO COMMENCEMENT OF WELL

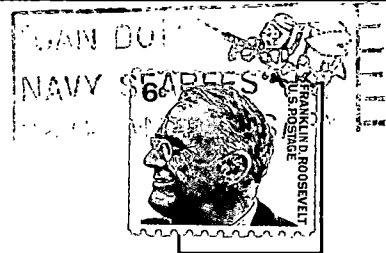
1. Operator Beardmore Drilling Company Address 700 - 120 Bldg., Wichita, Kansas
2. Lease name Adelhardt Well No. 1 County Kingman
3. Well Location NE SE Sec. 32 Township 29S Range 9W
4. Well to be drilled 660 ft. from nearest lease line.
5. Drilling Contractor Gabbert-Jones, Inc. Address 830 Sutton Place, Wichita, Kansas
6. Type of equipment: Rotary Cable Tool . Approx. date operation to-begin 4-19- 196 8.
7. Well to be drilled for Oil Gas Disposal . Input Estimated Total Depth of Well 4400 ft.
8. Depth of deepest fresh water well within one mile of location 100 ft. If none exists, write NONE -.
9. Ground elevation at location is approx. - ft. higher or 10 ft. lower than ground elevation at water well.
10. Depth of the deepest municipal water well within three miles of location none ft. If none exists, write NONE -.
11. Operator states that he will set surface pipe at least 25 ft. below all Tertiary or unconsolidated deposits and, taking into consideration differences in ground elevations, that the minimum depth necessary, to the best of his knowledge and belief, to protect all fresh water zones is 100 ft. and operator agrees to set surface pipe at this location to a depth of not less than 200 ft. Alternate 1 Alternate 2 .

REMARKS:

Beardmore Drilling Company

Signature of Operator By Heber Beardmore
Heber Beardmore





**State Corporation Commission of Kansas
Conservation Division
500 Insurance Building
212 North Market
Wichita, Kansas 67202**

**RECEIVED
STATE CORPORATION COMMISSION
APR 19 1968
CONSERVATION DIVISION
Wichita, Kansas**

(IF PREFERRED, MAIL IN ENVELOPE)