

TYPE OR PRINT

NOTICE OF INTENTION TO DRILL

RULE 82-2-311

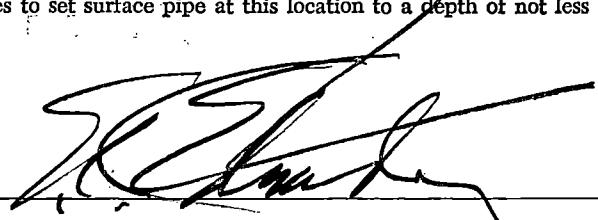
15-095-01772-0000

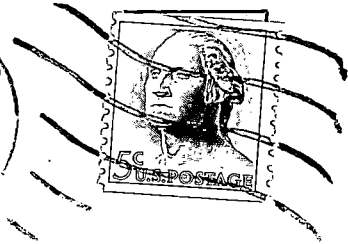
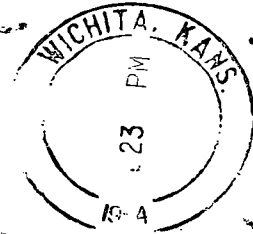
TO BE FILED WITH THE STATE CORPORATION COMMISSION PRIOR TO COMMENCEMENT OF WELL

1. Operator E. K. Edmiston Address 501 First National Bank Bldg.,
2. Lease name TWYMAN Well No. 1 County Kingman Wichita, Ks
3. Well Location NE NE SE Sec. 34 Township 29S Range 9W
4. Well to be drilled 330 ft. from nearest lease line.
5. Drilling Contractor E. K. Edmiston Drilling Co., Inc., Address 501 First National Bank Bldg
Wichita, Kansas
6. Type of equipment: Rotary Cable Tool Approx. date operation to begin 6/22/64 195.
7. Well to be drilled for Oil Gas Disposal Input Estimated Total Depth of Well 4200 ft.
8. Depth of deepest fresh water well within one mile of location 110 ft. If none exists, write NONE.
9. Ground elevation at location is approx. level ft. higher or _____ ft. lower than ground elevation at water well.
10. Depth of the deepest municipal water well within three miles of location none ft. If none exists, write NONE
11. Operator states that he will set surface pipe at least 25 ft. below all Tertiary or unconsolidated deposits and, taking into consideration differences in ground elevations, that the minimum depth necessary, to the best of his knowledge and belief, to protect all fresh water zones is 250 ft. and operator agrees to set surface pipe at this location to a depth of not less than 250 ft. Alternate 1 Alternate 2

REMARKS:

Signature of Operator _____





State Corporation Commission of Kansas
Conservation Division
500 Insurance Building
212 North Market
Wichita 2, Kansas

RECEIVED
STATE CORPORATION COMMISSION

JUN 24 1964
06-24-64
CONSERVATION DIVISION
Wichita, Kansas

(IF PREFERRED, MAIL IN ENVELOPE)