

STATE OF KANSAS
STATE CORPORATION COMMISSION

15-093-00378-0000
WELL PLUGGING RECORD

Give All Information Completely
Make Required Affidavit
Mail or Deliver Report to:
Conservation Division
State Corporation Commission
211 No. Broadway
Wichita, Kansas

Kearny County, Sec. 28 Twp. 24S Rge. (E) 38 (W)

Location as "NE/CNW/SW" or footage from lines 100' W of Center of S/2

Lease Owner Kansas-Nebraska Natural Gas Company, Inc.

Lease Name Turner Well No. 1

Office Address Box 608, Hastings, Nebraska 68901

Character of Well (completed as Oil, Gas or Dry Hole) Gas

Date well completed 5/5 19 61

Application for plugging filed 10/17 19 66

Application for plugging approved 10/18 19 66

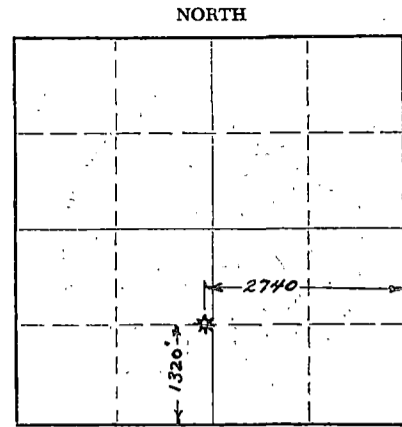
Plugging commenced 11/2 19 66

Plugging completed 11/2 19 66

Reason for abandonment of well or producing formation No longer capable of commercial production

If a producing well is abandoned, date of last production 7/13 19 66

Was permission obtained from the Conservation Division or its agents before plugging was commenced? Yes



Locate well correctly on above Section Plat

Name of Conservation Agent who supervised plugging of this well Edgar Eves

Producing formation Chase Group Depth to top 2404 Bottom 2583 Total Depth of Well 2650 Feet

Show depth and thickness of all water, oil and gas formations.

OIL, GAS OR WATER RECORDS				CASING RECORD		
FORMATION	CONTENT	FROM	TO	SIZE	PUT IN	PULLED OUT
Harrington & Krider	Gas	2404	2432	10 3/4	402	None
Winfield	Gas	2459	2477	7"	2643	None
Upper Fort Riley	Gas	2521	2540			
Lower Fort Riley	Gas	2560	2583			

Describe in detail the manner in which the well was plugged, indicating where the mud fluid was placed and the method or methods used in introducing it into the hole. If cement or other plugs were used, state the character of same and depth placed, from feet to feet for each plug set.

- 25 sacks cement pumped to 2590
- 20 sacks cement plug from 500-400
- 10 sacks cement plug from 50- surface

RECEIVED
STATE CORPORATION COMMISSION

DEC 22 1966 12-22-66

CONSERVATION DIVISION
Wichita, Kansas

(If additional description is necessary, use BACK of this sheet)

Name of Plugging Contractor Sargent Casing Pulling Service

Address Liberal, Kansas

STATE OF NEBRASKA, COUNTY OF ADAMS, ss.

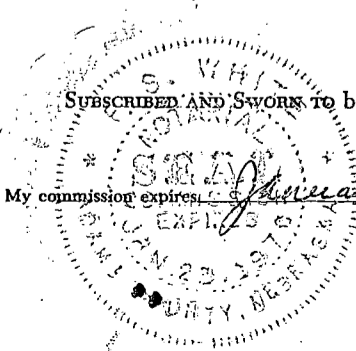
Thomas C. Swanson (employee of owner) or (owner of operator) of the above-described well, being first duly sworn on oath, says: That I have knowledge of the facts, statements, and matters herein contained and the log of the above-described well as filed and that the same are true and correct. So help me God.

(Signature) Thomas C. Swanson
Thomas C. Swanson, Gen'l Supt. of Prod.
P. O. Box 608, Hastings, Nebraska 68901
(Address)

SUBSCRIBED AND SWORN to before me this 20th day of December, 1966

My commission expires January 23, 1970

Notary Public.



Lakin, Kansas
August 17, 1951

Turner #1:

Location - 100' west of center of S $\frac{1}{2}$ 28-24S-38W, Kearney County, Kansas

Elevation - Unknown

Rotary drilling commenced April 26, 1951

Rotary Drilling completed May 3, 1951

Total depth - 2651' G.L.

10 3/4" casing set at 402'

7" casing set at 2643'

Deliverability not completed at this date

RECEIVED
STATE CORPORATION COMMISSION

DEC 22 1966

Drillers Log:

	From	To
Sand and Gravel	0	40
Blue Clay and Gyp	40	200
Blud Clay and Gyp	200	215
Shale, Shells and Sand Stone	215	275
Clay and Gravel	275	400
Blue Shale	400	560
Red Bed	560	615
Red Bed	615	760
Red Bed and Gyp	760	1320
Red Rock, Gyp and Salt	1320	1540
Anhydrite	1540	1600
Red Rock Gyp, Anhydrite and Shale	1600	1795
Shale and Anhydrite	1795	2000
Anhydrite and Shale	2000	2115
Shale and Anhydrite	2115	2210
Anhydrite and Gyp	2210	2310
Lime and Shale	2310	2364
Anhydrite, Gyp and Shale	2364	2424
Shale and Lime	2424	2480
Lime and Sand	2480	2574
Shale and Lime	2574	2655

Run 402' of 10 3/4" Surface Casing.
Cemented with 250 sacks cement. Cement
circulated.

Run 2643' 7" O.D. Casing. Cemented with
950 Sacks cement. Cement circulated.

Total depth 2655