

TYPE

NOTICE OF INTENTION TO DRILL

C-1

TO BE FILED WITH THE STATE CORPORATION COMMISSION
PRIOR TO COMMENCEMENT OF WELL

API Number 15-155-20,481-0000
(For office use only)

1. Operator Art Small & Co. 98 08
 Address Route 5--Box 83/Salina, KS 67401
2. Contractor Allen Drilling Company
 Address P.O. Box 1389/Great Bend, KS 67530
3. Type of Equipment: Rotary Cable Tool _____
 4. Well to be Drilled for: Oil Gas
 Disposal _____ Input _____ Other _____
5. Depth of Deepest Fresh Water within 1 mile 100 ft.
 6. Depth of Municipal Water Well within 3 miles NONE ft.
 7. Depth to Protect all Fresh Water 200 ft.
 8. Amount of Surface Casing to be set 230 ft.
 9. Alternate No. 1 No. 2 ~~_____~~

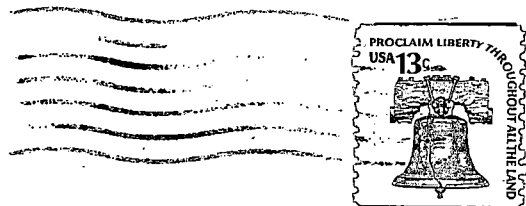
Starting Date March 15, 1978
 County Reno
 Sec 20 Twp 23 S Rge 9W ^E W
 Spot Location NE $\frac{1}{4}$ - NW?
990 from W. Line
 Nearest Lease Line 330 from S. Line ft.
 Lease Name Viril Moeckel
 Well No. #1
 Est. Total Depth 3900 ft.

REMARKS:

OPERATOR STATES THAT HE WILL COMPLY WITH K. S. A. 55-128

Signature of Operator

Ardyce M. Smedley



State Corporation Commission of Kansas
Conservation Division
245 North Water
Wichita, Kansas 67202

RECEIVED
STATE CORPORATION COMMISSION

JAN 11 1978

CONSERVATION DIVISION
Wichita, Kansas

(IF PREFERRED, MAIL IN ENVELOPE)