

TYPE OR PRINT

# NOTICE OF INTENTION TO DRILL

C-1

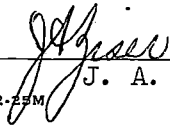
15-095-20,035

TO BE FILED WITH THE STATE CORPORATION COMMISSION PRIOR TO COMMENCEMENT OF WELL

1. Operator Colorado Oil Company Address 915 Union Natl. Bldg., Wichita, Kansas
2. Lease name Prouse Well No. 1 County Kingman
3. Well Location NE SW SW Sec. 31 Township 30S Range 6W
4. Well to be drilled 990 ft. from nearest lease line.
5. Drilling Contractor Gabbert-Jones, Inc. Address 830 Sutton Place, Wichita, Kansas
6. Type of equipment: Rotary  Cable Tool  Approx. date operation to begin Aug. 9 1967.
7. Well to be drilled for Oil  Gas  Disposal  Input  Estimated Total Depth of Well 4400 ft.
8. Depth of deepest fresh water well within one mile of location 80 ft. If none exists, write NONE
9. Ground elevation at location is approx. \_\_\_\_\_ ft. higher or 15 ft. lower than ground elevation at water well.
10. Depth of the deepest municipal water well within three miles of location \_\_\_\_\_ ft. If none exists, write NONE  
None
11. Operator states that he will set surface pipe at least 25 ft. below all Tertiary or unconsolidated deposits and, taking into consideration differences in ground elevations, that the minimum depth necessary, to the best of his knowledge and belief, to protect all fresh water zones is 200 ft. and operator agrees to set surface pipe at this location to a depth of not less than 250 ft. Alternate 1  Alternate 2 .

REMARKS:

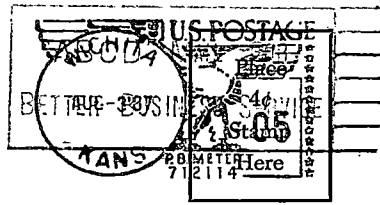
Signature of Operator \_\_\_\_\_



J. A. Zaiser, Dist. Engineer



WICHITA, KANSAS  
PM.  
3 AUG  
1967



State Corporation Commission of Kansas  
Conservation Division  
500 Insurance Building  
212 North Market  
Wichita 2, Kansas

8-3-67  
RECEIVED  
STATE CORPORATION COMMISSION

AUG 3 1967

CONSERVATION DIVISION  
Wichita, Kansas

(IF PREFERRED, MAIL IN ENVELOPE)