

TYPE

NOTICE OF INTENTION TO DRILL

C-1

TO BE FILED WITH THE STATE CORPORATION COMMISSION
PRIOR TO COMMENCEMENT OF WELL

API Number 15-155-20327-0000
(For office use only)

- Operator SANTA-FE PIPE & SUPPLY, INC.
Address P. O. BOX 562 - GREAT BEND, KANSAS
- Contractor WOODMAN & IANNITTI DRILLING CO.
Address 1008 UNION NATIONAL BLDG. WICHITA, KS.
- Type of Equipment: Rotary Cable Tool
- Well to be Drilled for: Oil Gas
Disposal Input Other
- Depth of Deepest Fresh Water within 1 mile 60' ft.
- Depth of Municipal Water Well within 3 miles NONE ft.
- Depth to Protect all Fresh Water 100' ft.
- Amount of Surface Casing to be set 225' ft.
- Alternate No. 1 No. 2

Starting Date March 20, 1976

County RENO

Sec 14 Twp 23S S Rge 9 ^{3E} W

Spot Location CNW-SW

Nearest Lease Line 660' ft.

Lease Name ROACH "A"

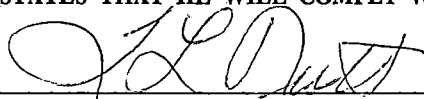
Well No. 1

Est. Total Depth 3750' ft.

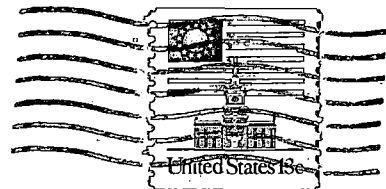
REMARKS:

OPERATOR STATES THAT HE WILL COMPLY WITH K. S. A. 55-128

Signature of Operator



Box 562
Great Bend, Kansas 67530



State Corporation Commission of Kansas
Conservation Division
P. O. Box 17027
Wichita, Kansas 67217

RECEIVED
STATE CORPORATION COMMISSION

FEB 26 1976 2-26-76

CONSERVATION DIVISION
Wichita, Kansas

(IF PREFERRED, MAIL IN ENVELOPE)