

CONFIDENTIAL

STATE CORPORATION COMMISSION OF KANSAS
OIL & GAS CONSERVATION DIVISION
WELL COMPLETION FORM
ACO-1 WELL HISTORY
DESCRIPTION OF WELL AND LEASE

API NO. 15- 055-21160-0000

County Finney

 - - NW - NW Sec.; 19 Twp. 22S Rge. 33 X ^E _W

660 Feet from S/W (circle one) Line of Section

660 Feet from E/W (circle one) Line of Section

Footages Calculated from Nearest Outside Section Corner:
NE, SE, NW or SW (circle one)

Lease Name GardenCo Well # 1-19

Field Name Wildcat

Producing Formation N/A

Elevation: Ground 2909' KB 2921'

Total Depth 5000' PBDT 0

Amount of Surface Pipe Set and Cemented at 1785 Feet

Multiple Stage Cementing Collar Used? Yes X No

If yes, show depth set N/A Feet

If Alternate II completion, cement circulated from N/A

feet depth to N/A w/ N/A sx cat.

Drilling Fluid Management Plan DDA 1-13-99
(Data must be collected from the Reserve Pit)

Chloride content 7000 ppm Fluid volume 7300 bbls

Dewatering method used evaporation

Location of fluid disposal if hauled offsite:

Operator Name 12-30-92 **RELEASED**

Lease Name License No.
Quarter Section Twp. S Rng. E/W

County **DEC 5 U 1992** **FROM CONFIDENTIAL**

Operator: License # 5363

Name: BEREXCO INC

Address 970 Fourth Financial Center

City/State/Zip Wichita, KS 67202

Purchaser:

Operator Contact Person: Evan Mayhew

Phone (316) 265-3311

Contractor: Name: BEREDCO INC

License: 5147

Wellsite Geologist: Tim Hedrick

Designate Type of Completion

X New Well Re-Entry Workover

 Oil SWD SIGW Temp. Abd.

 Gas ENHR SIGU

X Dry Other (Core, USW, Expl., Cathodic, etc)

If Workover/Re-Entry: old well info as follows:

Operator: **DEC 2 9**

Well Name: **CONFIDENTIAL**

Comp. Date Old Total Depth

 Deepening Re-perf. Conv. to Inj/SWD

 Plug Back PBDT

 Commingled Docket No.

 Dual Completion Docket No.

 Other (SWD or Inj?) Docket No.

11-12-92 11-22-92 11-23-92
Spud Date Date Reached TD Completion Date

INSTRUCTIONS: An original and two copies of this form shall be filed with the Kansas Corporation Commission, 200 Colorado Derby Building, Wichita, Kansas 67202, within 120 days of the spud date. For completion, workover or conversion of a well. Rule 82-3-130, 82-3-106 and 82-3-107 apply. Information on side two of this form will be held confidential for a period of 12 months if requested in writing and submitted with the form (see rule 82-3-107 for confidentiality in excess of 12 months). One copy of all wireline logs and geologist well report shall be attached with this form. ALL CEMENTING TICKETS MUST BE ATTACHED. Submit CP-4 form with all plugged wells. Submit CP-111 form with all temporarily abandoned wells.

All requirements of the statutes, rules and regulations promulgated to regulate the oil and gas industry have been fully complied with and the statements herein are complete and correct to the best of my knowledge.

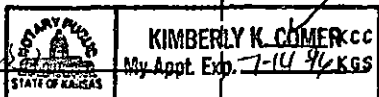
Signature Evan Mayhew

Title Division Engineer Date 12-23-92

Subscribed and sworn to before me this 23rd day of December, 19 92.

Notary Public Kimberly K. Comer

Date Commission Expires 7-14-96



K.C.C. OFFICE USE ONLY
F Letter of Confidentiality Attached
C Wireline Log Received
C Geologist Report Received

Distribution
 SWD/Rep NGPA
 Plug Other (Specify)

Operator Name BEREXCO INC Lease Name GardenCo Well # 1-19
 Sec. 19 Twp. 22S Rge. 22 East West
 County Finney

INSTRUCTIONS: Show important tops and base of formations penetrated. Detail all cores. Report all drill stem tests giving interval tested, time tool open and closed, flowing and shut-in pressures, whether shut-in pressure reached static level, hydrostatic pressures, bottom hole temperature, fluid recovery, and flow rates if gas to surface during test. Attach extra sheet if more space is needed. Attach copy of log.

Drill Stem Tests Taken (Attach Additional Sheets.)	<input checked="" type="checkbox"/> Yes <input type="checkbox"/> No	<input checked="" type="checkbox"/> Log	Formation (Top), Depth and Datum	<input type="checkbox"/> Sample
Samples Sent to Geological Survey	<input type="checkbox"/> Yes <input checked="" type="checkbox"/> No	Name	Top	Datum
Cores Taken	<input type="checkbox"/> Yes <input checked="" type="checkbox"/> No	See attached.		
Electric Log Run (Submit Copy.)	<input checked="" type="checkbox"/> Yes <input type="checkbox"/> No			
List All E.Logs Run:				
See attached.				

CASING RECORD <input checked="" type="checkbox"/> New <input type="checkbox"/> Used							
Report all strings set-conductor, surface, intermediate, production, etc.							
Purpose of String	Size Hole Drilled	Size Casing Set (In O.D.)	Weight Lbs./Ft.	Setting Depth	Type of Cement	# Sacks Used	Type and Percent Additives
Surface	12-1/4"	8-5/8"	25#	1785'	65/35 C-POZ	600	6% gel, 2% SL, 1/4# D5
					Class C	150	2%SL, 1/4# D5

ADDITIONAL CEMENTING/SQUEEZE RECORD				
Purpose:	Depth Top Bottom	Type of Cement	#Sacks Used	Type and Percent Additives
Perforate				
Protect Casing				
Plug Back TD				
Plug Off Zone				

Shots Per Foot	PERFORATION RECORD - Bridge Plugs Set/Type		Acid, Fracture, Shot, Cement Squeeze Record	
	Specify Footage of Each Interval Perforated		(Amount and Kind of Material Used)	Depth

TUBING RECORD	Size	Set At	Packer At	Liner Run <input type="checkbox"/> Yes <input type="checkbox"/> No

Date of First, Resumed Production, -SMD or Inj.	Producing Method <input type="checkbox"/> Flowing <input type="checkbox"/> Pumping <input type="checkbox"/> Gas Lift <input type="checkbox"/> Other (Explain)
-------------------------------------------------	---------------------------------------------------------------------------------------------------------------------------------------------------------------

Estimated Production Per 24 Hours	Oil Bbls.	Gas Mcf	Water Bbls.	Gas-Oil Ratio	Gravity
-----------------------------------	-----------	---------	-------------	---------------	---------

Disposition of Gas: Vented Sold Used on Lease (If vented, submit ACO-18.)

METHOD OF COMPLETION: Open Hole Perf. Dually Comp. Commingled Other (Specify) D & A

Production Interval _____

STATE OF KANSAS
COMMISSION

DEC 30 1992

MINING DIVISION
Wichita, Kansas

GEOLOGICAL REPORT
GARDENCO #1-19
Sec. 19-22S-33W
Finney County, KS

CONFIDENTIAL

Formation	Sample Tops		Garden City TX #2-20 Correlation		
	Depth	Datum	Depth	Datum	Corr.
Base Heebner	3818	- 897	3815	- 902	+ 5
Toronto	3833	- 912	3830	- 917	+ 5
Lansing	3866	- 945	3864	- 951	+ 6
Lansing "E"	4005	-1084	4003	-1090	+ 6
KS City "A"	4218	-1297	4211	-1298	+ 1
KS City "A"	4264	-1343	4256	-1343	Flat
BKC	4340	-1419	4355	-1442	+23
Marmaton	4372	-1451	4385	-1472	+21
Pawnee	4444	-1523	4461	-1548	+25
Ft. Scott	4478	-1557	4490	-1577	+20
Cherokee	4492	-1571	4505	-1592	+21
Morrow	4686	-1765	4694	-1781	+16
St. Louis	4760	-1839	4773	-1860	+21
St. Louis C	4789	-1868	4799	-1886	+18

ORIGINAL

RELEASED

FEB 14 1995

FROM CONFIDENTIAL

DEC 29

CONFIDENTIAL

TRILOBITE TESTING, L.L.C.

P.O. Box 362 • Hays, Kansas 67601

Drill-Stem Test Data

Well Name GARDEN CO. #1-19 Test No. 1 Date 11/18/92
 Company BEREXCO INC Zone PAWNEE
 Address 970 FOURTH FINANCIAL CNTR WICHITA KS 67202 Elevation _____
 Co. Rep./Geo. TIM HEDRICK Cont. BEREDCO RIG #2 Est. Ft. of Pay 10
 Location: Sec. 19 Twp. 22S Rge. 33W Co. FINNEY State KS
 API# 15-055-21160

Interval Tested 4450-4469 Drill Pipe Size 4.5" XH
 Anchor Length 19 Wt. Pipe I.D. - 2.7 Ft. Run _____
 Top Packer Depth 4445 Drill Collar - 2.25 Ft. Run 610
 Bottom Packer Depth 4450 Mud Wt. 9.3 lb/Gal.
 Total Depth 4469 Viscosity 44 Filtrate 8.8

Tool Open @ 6:32 PM Initial Blow WEAK 1/4" BLOW WITH SLIGHT DECREASE
 Final Blow NO RETURN BLOW

Recovery - Total Feet 40 Flush Tool? NO

Rec. 40 Feet of DRILLING MUD WITH SPECKS OIL IN TOOL **RELEASED**
 Rec. _____ Feet of _____
 Rec. _____ Feet of _____ **FEB 14 1995**
 Rec. _____ Feet of _____
 Rec. _____ Feet of _____ **FROM CONFIDENTIAL**

BHT 108 °F Gravity _____ °API @ _____ °F Corrected Gravity _____ °API
 RW _____ @ _____ °F Chlorides _____ ppm Recovery Chlorides 1300 ppm System

(A) Initial Hydrostatic Mud 2164.9 PSI AK1 Recorder No. 13337 Range 3975
 (B) First Initial Flow Pressure 51.2 PSI @ (depth) 4455 w / Clock No. 31152
 (C) First Final Flow Pressure 52.3 PSI AK1 Recorder No. 10332 Range 4050
 (D) Initial Shut-in Pressure 1060.7 PSI @ (depth) 4464 w / Clock No. 14389
 (E) Second Initial Flow Pressure 52.3 PSI AK1 Recorder No. _____ Range _____
 (F) Second Final Flow Pressure 63.7 PSI @ (depth) _____ w / Clock No. _____
 (G) Final Shut-in Pressure 997.5 PSI Initial Opening 15 Final Flow 60
 (H) Final Hydrostatic Mud 2144.9 PSI Initial Shut-in 30 Final Shut-in 60

Our Representative ROD STEINBRINK

CHART PAGE

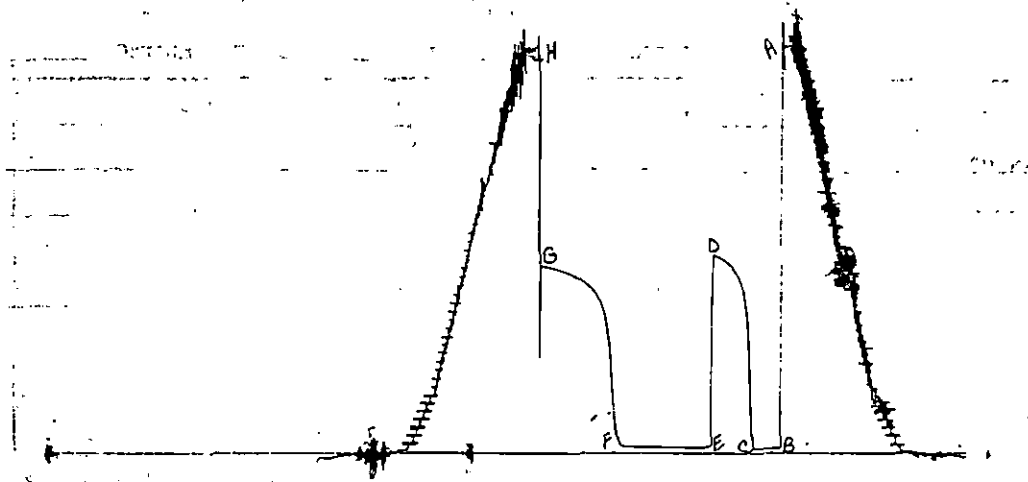
DST#1

10332

RELEASED

FEB 14 1995

FROM CONFIDENTIAL



This is an actual photograph of recorder chart

	FIELD READING	OFFICE READING
--	------------------	-------------------

(A) INITIAL HYDROSTATIC MUD	2160	2164.9
(B) FIRST INITIAL FLOW PRESSURE	49	51.2
(C) FIRST FINAL FLOW PRESSURE	49	52.3
(D) INITIAL CLOSED-IN PRESSURE	1054	1060.7
(E) SECOND INITIAL FLOW PRESSURE	49	52.3
(F) SECOND FINAL FLOW PRESSURE	59	63.7
(G) FINAL CLOSED-IN PRESSURE	995	997.5
(H) FINAL HYDROSTATIC MUD	2140	2144.9

TRILOBITE TESTING L.L.C.

15-055-21160-0000

P.O. Box 362 • Hays, Kansas 67601

Test Ticket

No 5333

Well Name & No: Garden Co. #1-19 Test No. 1 Date 11-18-92
 Company Berexco, Inc. Zone Tested Pawnee
 Address 970 Fourth Financial Ctr. Wichita, KS. 67202 Elevation _____
 Co. Rep./Geo. Timothy Hedrick cont. Bered Co. #2 Est. Ft. of Pay 10'
 Location: Sec. 19 Twp. 22^S Rge. 33^W Co. Finney State KS.
 No. of Copies _____ Distribution Sheet _____ Yes _____ No Turnkey _____ Yes X No _____ Evaluation _____

Interval Tested 4450 - 4469 Drill Pipe Size 4 1/2" XH
 Anchor Length 19' Top Choke — 1" _____ Bottom Choke — 3/4"
 Top Packer Depth 4445 Hole Size — 7 7/8" _____ Rubber Size — 6 3/4"
 Bottom Packer Depth 4450 Wt. Pipe I.D. — 2.7 Ft. Run _____
 Total Depth 4469 Drill Collar — 2.25 Ft. Run 610'
 Mud Wt. 9.3 lb/gal. Viscosity 44 Filtrate 8.8
 Tool Open @ 6:32 pm. Initial Blow Weak 1/4" blow w/ slight decrease.

Final Blow No return blow.

Recovery — Total Feet	Feet of Gas In Pipe	Flush Tool?
<u>40'</u>	_____	<u>No</u>
Rec. _____ Feet Of _____	%gas _____ %oil _____ %water _____ %mud _____	
Rec. _____ Feet Of _____	%gas _____ %oil _____ %water _____ %mud _____	
Rec. <u>40'</u> Feet Of <u>Drig. Mud</u>	%gas _____ %oil _____ %water _____ %mud _____	
Rec. _____ Feet Of <u>w/ specks oil</u>	%gas _____ %oil _____ %water _____ %mud _____	
Rec. _____ Feet Of <u>@ tool</u>	%gas _____ %oil _____ %water _____ %mud _____	

BHT 108° °F Gravity _____ °API @ _____ °F Corrected Gravity _____ °API

RW _____ @ _____ °F Chlorides _____ ppm Recovery Chlorides 1,300 ppm System

- (A) Initial Hydrostatic Mud 2160 PSI AK1 Recorder No. 13337 Range 3975
- (B) First Initial Flow Pressure 49 PSI @ (depth) 4455 w/Clock No. 31152
- (C) First Final Flow Pressure 49 PSI AK1 Recorder No. 10332 Range 4050
- (D) Initial Shut-In Pressure 1054 PSI @ (depth) 4464 w/Clock No. 14389
- (E) Second Initial Flow Pressure 49 PSI AK1 Recorder No. _____ Range _____
- (F) Second Final Flow Pressure 59 PSI @ (depth) _____ w/Clock No. _____
- (G) Final Shut-In Pressure 995 PSI Initial Opening 15 Test 600
- (H) Final Hydrostatic Mud 2140 PSI Initial Shut-In 30 Jars X 200

Final Flow 60 Safety Joint X 50
 Final Shut-In 60 Straddle _____
 Circ. Sub X N/C
 Sampler _____

Approved by _____
 Our Representative Rod Steinbrink

Printcraft Printers • Hays, KS _____ TOTAL PRICE \$ 850.00

TRILOBITE TESTING L.L.C. SHALL NOT BE LIABLE FOR DAMAGE OF ANY KIND OF THE PROPERTY OR PERSONNEL OF THE ONE FOR WHOM A TEST IS MADE, OR FOR ANY LOSS SUFFERED OR SUSTAINED, DIRECTLY OR INDIRECTLY, THROUGH THE USE OF ITS EQUIPMENT, OR ITS STATEMENTS OR OPINION CONCERNING THE RESULTS OF ANY TEST. TOOLS LOST OR DAMAGED IN THE HOLE SHALL BE PAID FOR AT COST BY THE PARTY FOR WHOM THE TEST IS MADE.

TRILOBITE TESTING, L.L.C.

P.O. Box 362 • Hays, Kansas 67601

Drill-Stem Test Data

Well Name GARDEN CO. #1-19 Test No. 2 Date 11/20/92
Company BEREXCO INC Zone ST LOUIS
Address 970 FOURTH FINANCIAL CNTR WICHITA KS 67202 Elevation 2921
Co. Rep./Geo. TIM HEDRICK Cont. BEREDCO RIG #2 Est. Ft. of Pay _____
Location: Sec. 19 Twp. 22S Rge. 33W Co. FINNEY State KS

Interval Tested 4787-4805 Drill Pipe Size 4.5" XH
Anchor Length 18 Wt. Pipe I.D. - 2.7 Ft. Run _____
Top Packer Depth 4782 Drill Collar -- 2.25 Ft. Run 610
Bottom Packer Depth 4787 Mud Wt. 9.1 lb/Gal.
Total Depth 4805 Viscosity 50 Filtrate 7.6

Tool Open @ 7:58 AM Initial Blow WEAK BLOW DIED IN 5 MINUTES

Final Blow SHORT SURGE-FLUSHED TOOL AND RECEIVED SHORT SURGE THEN DIED

Recovery - Total Feet 5 Flush Tool? YES

Rec. 5 Feet of DRILLING MUD
Rec. _____ Feet of _____
Rec. _____ Feet of _____
Rec. _____ Feet of _____
Rec. _____ Feet of _____

BHT 120 °F Gravity _____ °API @ _____ °F Corrected Gravity _____ °API
RW _____ °F Chlorides _____ ppm Recovery Chlorides 1500 ppm System

(A) Initial Hydrostatic Mud 2396.4 PSI AK1 Recorder No. 10332 Range 4025

(B) First Initial Flow Pressure 12.5 PSI @ (depth) 4792 w / Clock No. 31152

(C) First Final Flow Pressure 15.8 PSI AK1 Recorder No. 13337 Range 3975

(D) Initial Shut-in Pressure 986.1 PSI @ (depth) 4800 w / Clock No. 14389

(E) Second Initial Flow Pressure 19.4 PSI AK1 Recorder No. _____ Range _____

(F) Second Final Flow Pressure 19.4 PSI @ (depth) _____ w / Clock No. _____

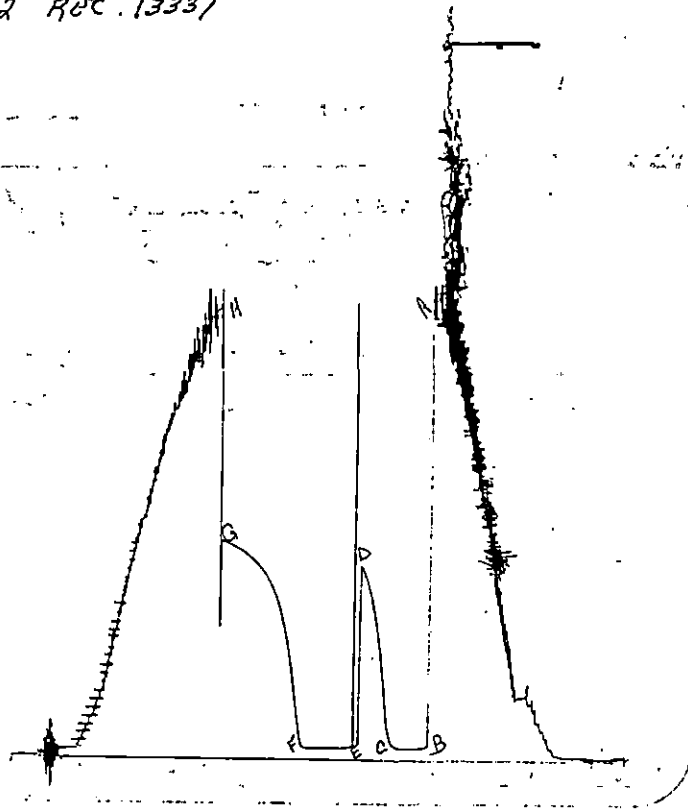
(G) Final Shut-in Pressure 1117.8 PSI Initial Opening 15 Final Flow 30

(H) Final Hydrostatic Mud 2344.9 PSI Initial Shut-in 30 Final Shut-in 60

Our Representative R STEINBRINK/J RIEDL

CHART PAGE

DST #2 RUC. 13337



This is an actual photograph of recorder chart

	FIELD READING	OFFICE READING
--	------------------	-------------------

(A) INITIAL HYDROSTATIC MUD	2385	2396.4
(B) FIRST INITIAL FLOW PRESSURE	10	12.5
(C) FIRST FINAL FLOW PRESSURE	13	15.8
(D) INITIAL CLOSED-IN PRESSURE	983	986.1
(E) SECOND INITIAL FLOW PRESSURE	16	19.4
(F) SECOND FINAL FLOW PRESSURE	16	19.4
(G) FINAL CLOSED-IN PRESSURE	1104	1117.8
(H) FINAL HYDROSTATIC MUD	2338	2344.9

TRILOBITE TESTING L.L.C.

P.O. Box 362 • Hays, Kansas 67601

Test Ticket

No 5334

Well Name & No. Gardenco #1-19 Test No. 2 Date 11-20-92
 Company Berexco, Inc. Zone Tested ST LOUIS
 Address 970 Fourth Financial Ctr. Wichita, KS 67202 Elevation 2921 K.B.
 Co. Rep./Geo. Tim Hedrick cont. Beredco #2 Est. Ft. of Pay _____
 Location: Sec. 19 Twp. 22^S Rge. 33^W Co. Finney State KS
 No. of Copies 9 Distribution Sheet (Yes) No Turnkey _____ Yes X No _____ Evaluation _____

Interval Tested 4787 - 4805 Drill Pipe Size 4 1/2" KH
 Anchor Length 18' Top Choke - 1" _____ Bottom Choke - 3/4" _____
 Top Packer Depth 4782 Hole Size - 7 7/8" _____ Rubber Size - 6 3/4" _____
 Bottom Packer Depth 4787 Wt. Pipe I.D. - 2.7 Ft. Run _____
 Total Depth 4805 Drill Collar - 2.25 Ft. Run 610'
 Mud Wt. 9.1 lb/gal. Viscosity 50 Filtrate 7.6
 Tool Open @ 7:58 am. Initial Blow Weak blow died in 5 mins.

Final Blow SHORT SURGE FLOSHED TOOL + RECEIVED SHORT SURGE + THEN DRAIN

Recovery - Total Feet	Feet of Gas In Pipe	Flush Tool?
<u>5</u>	<u>2186</u>	<u>YES</u>
Rec. <u>5</u> Feet Of <u>DRILLING MUD</u>	%gas _____ %oil _____ %water _____ %mud _____	
Rec. _____ Feet Of _____	%gas _____ %oil _____ %water _____ %mud _____	
Rec. _____ Feet Of _____	%gas _____ %oil _____ %water _____ %mud _____	
Rec. _____ Feet Of _____	%gas _____ %oil _____ %water _____ %mud _____	
Rec. _____ Feet Of _____	%gas _____ %oil _____ %water _____ %mud _____	

BHT 120 °F Gravity _____ °API @ _____ °F Corrected Gravity _____ °API

RW 120 @ _____ °F Chlorides _____ ppm Recovery Chlorides 1,500 ppm System

- (A) Initial Hydrostatic Mud 2385 PSI AK1 Recorder No. 10332 Range 4025
- (B) First Initial Flow Pressure 10 PSI @ (depth) 4792 w/Clock No. 31152
- (C) First Final Flow Pressure 13 PSI AK1 Recorder No. 13337 Range 3975
- (D) Initial Shut-In Pressure 983 PSI @ (depth) 4800 w/Clock No. 14389
- (E) Second Initial Flow Pressure 16 PSI AK1 Recorder No. _____ Range _____
- (F) Second Final Flow Pressure 16 PSI @ (depth) _____ w/Clock No. _____
- (G) Final Shut-In Pressure 1104 PSI Initial Opening 15 Test X 600
- (H) Final Hydrostatic Mud 2338 PSI Initial Shut-In 30 Jars X 200

Final Flow 30 Safety Joint X 50
 Final Shut-In 60 Straddle _____
 Circ. Sub X NC
 Sampler _____
 Extra Packer _____
 Other _____

TRILOBITE TESTING L.L.C. SHALL NOT BE LIABLE FOR DAMAGE OF ANY KIND OF THE PROPERTY OR PERSONNEL OF THE ONE FOR WHOM A TEST IS MADE, OR FOR ANY LOSS SUFFERED OR SUSTAINED, DIRECTLY OR INDIRECTLY, THROUGH THE USE OF ITS EQUIPMENT, OR ITS STATEMENTS OR OPINION CONCERNING THE RESULTS OF ANY TEST. TOOLS LOST OR DAMAGED IN THE HOLE SHALL BE PAID FOR AT COST BY THE PARTY FOR WHOM THE TEST IS MADE.

Approved By Tim Hedrick

Our Representative RODSTEINBANK JOHN RIEPL

TRILOBITE TESTING, L.L.C.

P.O. Box 362 • Hays, Kansas 67601

Drill-Stem Test Data

Well Name GARDEN CO. #1-19 Test No. 3 Date 11/22/92
 Company BEREXCO INC. Zone MORROW
 Address 970 FOURTH FINANCIAL CNTR WICHITA KS 67202 Elevation 2921
 Co. Rep./Geo. TIM HEDRICK Cont. BEREDCO RIG #2 Est. Ft. of Pay ..
 Location: Sec. 19 Twp. 22S Rge. 33W Co. FINNEY State KS

Interval Tested <u>4751-4774</u>	Drill Pipe Size <u>4.5" XH</u>
Anchor Length <u>23</u>	Wt. Pipe I.D. - 2.7 Ft. Run <u>430</u>
Top Packer Depth <u>4746</u>	Drill Collar - 2.25 Ft. Run <u>9.1</u>
Bottom Packer Depth <u>4751/4774</u>	Mud Wt. <u>51</u> lb/Gal.
Total Depth <u>4970</u>	Viscosity <u>6.4</u> Filtrate <u>6.4</u>

Tool Open @ 5:25 AM Initial Blow WEAK BLOW / 2" DECREASING TO 1"

Final Blow VERY WEAK BLOW DEAD IN 30 MINUTES (BTM CLOCK STOPPED DURING FINAL FLOW)-BTM RECORDER HYDROSTATIC-2200 AT END OF TEST

Recovery - Total Feet 120 Flush Tool? NO

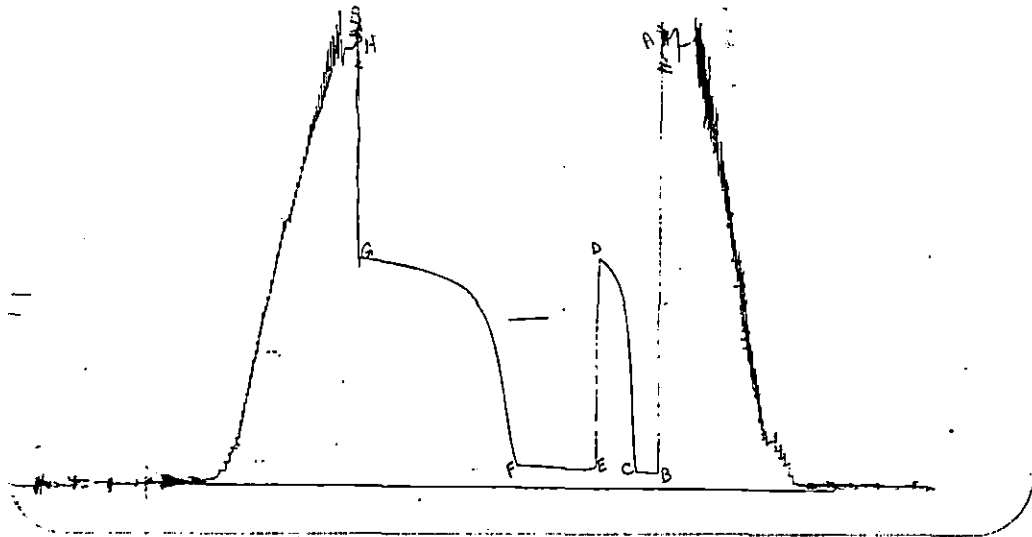
Rec. <u>30</u> Feet of <u>SLTLY OIL CUT MUD-2%OIL/98%MUD</u>
Rec. <u>90</u> Feet of <u>WTR CUT MUD WITH SCUM OF OIL-10%WTR/90%MUD</u>
Rec. _____ Feet of _____
Rec. _____ Feet of _____
Rec. _____ Feet of _____

BHT 118 °F Gravity _____ °API @ _____ °F Corrected Gravity _____ °API
 RW 0.2 @ 50 °F Chlorides 2000 ppm Recovery Chlorides 1350 ppm System

(A) Initial Hydrostatic Mud <u>2294.7</u> PSI	AK1 Recorder No. <u>13327</u> Range <u>3975</u>
(B) First Initial Flow Pressure <u>43.6</u> PSI	@ (depth) <u>4755</u> w / Clock No. <u>31152</u>
(C) First Final Flow Pressure <u>53.8</u> PSI	AK1 Recorder No. <u>10332</u> Range <u>4025</u>
(D) Initial Shut-in Pressure <u>1170.9</u> PSI	@ (depth) <u>4769</u> w / Clock No. <u>25813</u>
(E) Second Initial Flow Pressure <u>64.5</u> PSI	AK1 Recorder No. <u>10333</u> Range <u>4075</u>
(F) Second Final Flow Pressure <u>84.5</u> PSI	@ (depth) <u>4771</u> w / Clock No. <u>14389</u>
(G) Final Shut-in Pressure <u>1140.6</u> PSI	Initial Opening <u>15</u> Final Flow <u>60</u>
(H) Final Hydrostatic Mud <u>2270.9</u> PSI	Initial Shut-in <u>30</u> Final Shut-in <u>120</u>

CHART PAGE

DST No. RYC 10332

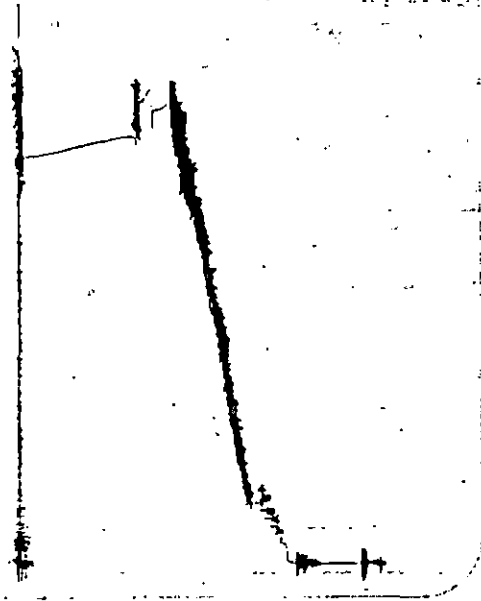


This is an actual photograph of recorder chart

	FIELD READING	OFFICE READING
(A) INITIAL HYDROSTATIC MUD	2288	2294.7
(B) FIRST INITIAL FLOW PRESSURE	40	43.6
(C) FIRST FINAL FLOW PRESSURE	54	53.8
(D) INITIAL CLOSED-IN PRESSURE	1168	1170.9
(E) SECOND INITIAL FLOW PRESSURE	62	64.5
(F) SECOND FINAL FLOW PRESSURE	82	84.5
(G) FINAL CLOSED-IN PRESSURE	1138	1140.6
(H) FINAL HYDROSTATIC MUD	2272	2270.9

CHART PAGE

DST #3 REC 10333
BELOW STRAPPLE



This is an actual photograph of recorder chart

FIELD
READING

OFFICE
READING

- (A) INITIAL HYDROSTATIC MUD
- (B) FIRST INITIAL FLOW PRESSURE
- (C) FIRST FINAL FLOW PRESSURE
- (D) INITIAL CLOSED-IN PRESSURE
- (E) SECOND INITIAL FLOW PRESSURE
- (F) SECOND FINAL FLOW PRESSURE
- (G) FINAL CLOSED-IN PRESSURE
- (H) FINAL HYDROSTATIC MUD

TRILOBITE TESTING L.L.C.

P.O. Box 362 • Hays, Kansas 67601

Test Ticket

№ 5335

Well Name & No. GARDEN CO. 1-19 Test No. 3 Date 11-22-92
 Company BERNCO INC. Zone Tested MORROW
 Address HEDRICK Elevation 2938 G.L.
 Co. Rep./Geo. TIM Cont. BERNCO R16 2 Est. Ft. of Pay —
 Location: Sec. 19 Twp. 22S Rge. 33W Co. FINNEY State KS
 No. of Copies 9 Distribution Sheet (YES) Turnkey NO Yes NO Evaluation NO

Interval Tested 4751-4774 Drill Pipe Size 4 1/2 XH
 Anchor Length 23 FT Top Choke — 1" Bottom Choke — 3/4"
 Top Packer Depth 4746 Hole Size — 77/8" Rubber Size — 6 3/4"
 Bottom Packer Depth 4751 Wt. Pipe I.D. — 2.7 Ft. Run —
 Total Depth 4774 ~~STRADDLE IN LOG~~ Drill Collar — 2.25 Ft. Run 430 FT
 Mud Wt. 9.1 lb/gal. Viscosity 51 Filtrate 6.4
 Tool Open @ 5:29 A.M. Initial Blow WEAK BLOW 2" DECREASING TO 1"

Final Blow VERY WEAK BLOW DEAD IN 30 MINUTES BTM REC'D. CLOCK STOPPED
BTM RECORDS ~~BTM RECORDS~~ HYDROSTATIC PRESSURE 2200 AT END OF TEST BTM REC'D. FINAL FLOW

Recovery — Total Feet	Feet of Gas in Pipe	Flush Tool?
<u>120</u>	<u>0</u>	<u>NO</u>
Rec. <u>30</u> Feet Of <u>SL OIL CUT MUD</u>	%gas <u>2</u> %oil <u>98</u> %water <u>0</u> %mud <u>0</u>	
Rec. <u>90</u> Feet Of <u>WATER CUT MUD WITH SCUM OF OIL</u>	%gas <u>0</u> %oil <u>10</u> %water <u>90</u> %mud <u>0</u>	
Rec. _____ Feet Of _____	%gas _____ %oil _____ %water _____ %mud _____	
Rec. _____ Feet Of _____	%gas _____ %oil _____ %water _____ %mud _____	

BHT 118° °F Gravity — °API @ — °F Corrected Gravity — °API

RW 1.2 @ 50 °F Chlorides 2,000 ppm Recovery Chlorides 1,350 ppm System

(A) Initial Hydrostatic Mud	<u>2288</u> PSI	AK1 Recorder No. <u>13372</u>	Range <u>3925</u>
(B) First Initial Flow Pressure	<u>40</u> PSI	@ (depth) <u>4755</u>	w/Clock No. <u>31152</u>
(C) First Final Flow Pressure	<u>54</u> PSI	AK1 Recorder No. <u>10332</u>	Range <u>4025</u>
(D) Initial Shut-In Pressure	<u>1068</u> PSI	@ (depth) <u>4769</u>	w/Clock No. <u>25813</u>
(E) Second Initial Flow Pressure	<u>62</u> PSI	AK1 Recorder No. <u>10333</u>	Range <u>4075</u>
(F) Second Final Flow Pressure	<u>82</u> PSI	@ (depth) <u>4771</u>	w/Clock No. <u>14389</u> <u>stopped</u>
(G) Final Shut-In Pressure	<u>1138</u> PSI	Initial Opening <u>15</u>	Test <u>✓</u> <u>600</u>
(H) Final Hydrostatic Mud	<u>2272</u> PSI	Initial Shut-In <u>30</u>	Jars <u>✓</u> <u>200</u>

TRILOBITE TESTING L.L.C. SHALL NOT BE LIABLE FOR DAMAGE OF ANY KIND OF THE PROPERTY OR PERSONNEL OF THE ONE FOR WHOM A TEST IS MADE, OR FOR ANY LOSS SUFFERED OR SUSTAINED, DIRECTLY OR INDIRECTLY, THROUGH THE USE OF ITS EQUIPMENT, OR ITS STATEMENTS OR OPINION CONCERNING THE RESULTS OF ANY TEST. TOOLS LOST OR DAMAGED IN THE HOLE SHALL BE PAID FOR AT COST BY THE PARTY FOR WHOM THE TEST IS MADE.

Approved By [Signature]
 Our Representative [Signature]
 Final Flow 60 Safety Joint ✓
 Final Shut-In 120 Straddle ✓
 Circ. Sub _____
 Sampler _____
 Extra Packer ✓
 Other _____



INVOICE

HALLIBURTON SERVICES

INVOICE NO.	DATE
251173	11/22/1992

A Halliburton Company

WELL LEASE NO./PLANT NAME	WELL/PLANT LOCATION	STATE	WELL/PLANT OWNER
ORDEN 1-19 <i>Cordeno</i>	FINNEY STATE CORPORATION	KS	BEREKCO
SERVICE LOCATION	CONTRACTOR	JOB PURPOSE	TICKET DATE
BERAL	BEREKCO #2	PLUG TO ABANDON	11/22/1992
CCT. NO.	CUSTOMER AGENT	VENDOR NO.	CUSTOMER P.O. NUMBER
19433	GARY MARSHALL		Wichita, Kansas
			SHIPPED VIA
			COMPANY TRUCK
			FILE NO.
			43312

~~BEREKCO~~ *Berekco*
 401 E. DOUGLAS
 SUITE 402
 WICHITA, KS 67202

Will fill

DIRECT CORRESPONDENCE TO:
 FIRST OKLAHOMA TOWER
 210 WEST PARK AVENUE
 SUITE 2050
 OKLAHOMA CITY, OK 73102-5601

PRICE REF. NO.	DESCRIPTION	QUANTITY	U/M	UNIT PRICE	AMOUNT
00-117	TRICING AREA - EASTERN AREA1 MILEAGE	51	MI	2.60	132.60
09-019	FLUGGING BK SPOT CEMENT OR MUD	2975	FT	1,125.00	1,125.00
04-043	PREMIUM CEMENT	141	SK	8.44	1,190.04
06-105	POZMIX A	6954	LB	.064	445.18
06-121	HALLIBURTON-GEL 2X	4	LB	5.00	N/C
07-277	HALLIBURTON-GEL BENTONITE	8	SK	14.75	118.00
00-207	BULK SERVICE CHARGE	251	CFT	1.15	288.65
00-306	MILEAGE CNTG MAT DEL OR RETURN	546.2865	YMI	.80	437.03
	INVOICE SUBTOTAL				3,736.50
	DISCOUNT-(BID)				747.28-
	INVOICE BID AMOUNT				2,989.22
	*-KANSAS STATE SALES TAX				146.48
	*-SEWARD COUNTY SALES TAX				29.89
	INVOICE TOTAL - PLEASE PAY THIS AMOUNT				\$3,165.59

RELEASED

FEB 14 1995

FROM CONFIDENTIAL

ORIGINAL

DEC 29

CONFIDENTIAL

FFX JOB TKT TERMS INVOICES PAYABLE NET BY THE 20TH OF THE FOLLOWING MONTH AFTER DATE OF INVOICE. UPON CUSTOMER'S DEFAULT IN PAYMENT OF CUSTOMER'S ACCOUNT BY THE LAST DAY OF THE MONTH FOLLOWING THE MONTH IN WHICH THE INVOICE IS DATED, CUSTOMER AGREES TO PAY INTEREST THEREON AFTER DEFAULT AT THE HIGHEST LAWFUL CONTRACT RATE APPLICABLE BUT NEVER TO EXCEED 18% PER ANNUM. IN THE EVENT IT BECOMES NECESSARY TO EMPLOY AN ATTORNEY TO ENFORCE COLLECTION OF SAID ACCOUNT, CUSTOMER AGREES TO PAY ALL COLLECTION COSTS AND



BULK MATERIALS DELIVERY
AND
TICKET CONTINUATION

15-055-21160-0000

CONFIDENTIAL
FOR INVOICE AND TICKET NO. 251/73

DATE 11-22-92	CUSTOMER ORDER NO.	WELL NO. AND FARM Garden Co. 1-19	COUNTY Finney	STATE Kansas
CHARGE TO Beredco Drig.		OWNER Berexco	CONTRACTOR Beredco Drig.	No. B 122766
MAILING ADDRESS		DELIVERED FROM Hugoton, Ks. Ks	LOCATION CODE 025535	PREPARED BY Mike Gilbert
CITY & STATE		DELIVERED TO NE/ Holcomb, Ks	TRUCK NO. 52827-7620	RECEIVED BY EBERSOLE

PRICE REFERENCE	SECONDARY REF. OR PART NO.	CODE		DESCRIPTION	UNITS 1		UNITS 2		UNIT PRICE	AMOUNT		
		L	D		QTY.	MEAS.	QTY.	MEAS.				
				235 C.F. 40/60 Pozmix Cement								
504-043	516.00272	2	B	Premium Cement	141	sk			8.44	1190	04	
506 -105	516.00286	2	B	Pozmix "A"	6956	1b			.064	445	18	
506-121	516.00259	2	B	Halliburton Gel 2%	4	sk				N/C		
507-277	516.00259	2	B	Halliburton Gel Added 4%	8	sk			14.75	118	00	
ORIGINAL												
DEC 29												
CONFIDENTIAL												
RELEASED												
FEB 14 1995												
FROM CONFIDENTIAL												
				Returned Mileage Charge	TOTAL WEIGHT	LOADED MILES	TON MILES					
				SERVICE CHARGE ON MATERIALS RETURNED			CU. FEET					
500-207		2	B	SERVICE CHARGE			CU. FEET	251	1.15	288	65	
500- B 306		2	B	Mileage Charge	21,423 TOTAL WEIGHT	51 LOADED MILES	546,2865 TON MILES		.80	437	03	
No. B 122766		CARRY FORWARD TO INVOICE							SUB-TOTAL		2478 90	

DISTRICT LIBERAL, KS

CONFIDENTIAL
 DATE 11-22-92

HALLIBURTON SERVICES YOU ARE HEREBY REQUESTED TO FURNISH EQUIPMENT AND SERVICEMEN TO DELIVER AND OPERATE THE SAME AS AN INDEPENDENT CONTRACTOR TO: Beledco Drilling (CUSTOMER) AND DELIVER AND SELL PRODUCTS, SUPPLIES, AND MATERIALS FOR THE PURPOSE OF SERVICING

L NO. 1-19 LEASE GARDEN Co. SEC. _____ TWP. _____ RANGE _____
 COUNTY FINNEY STATE KS. OWNED BY BELEXCO

THE FOLLOWING INFORMATION WAS FURNISHED BY THE CUSTOMER OR HIS AGENT

FORMATION TYPE	NEW USED	WEIGHT	SIZE	FROM	TO	MAX. ALLOW. P.S.I.
CASING	N	24	8 5/8	KB	1785	
LINER						
TUBING	U	16.6	4 1/2	KB	2975	
OPEN HOLE			7 7/8	1785	4920	SHOTS/FT.
PERFORATIONS						
PERFORATIONS						
PERFORATIONS						

ORIGINAL

DEC 2-9

CONFIDENTIAL

PREVIOUS TREATMENT: DATE _____ TYPE _____ MATERIALS _____

TREATMENT INSTRUCTIONS: TREAT THRU TUBING ANNULUS CASING TUBING/ANNULUS HYDRAULIC HORSEPOWER ORDERED
Cement Plug to Abandon w/ 235 sk 4 1/2 Poz 6% Gel - 100 sk @ 2975', 50 sk @ 1800', 50 sk @ 900', 10 sk @ 40', 10 sk mouse hole, 15 sk in kathole

CUSTOMER OR HIS AGENT WARRANTS THE WELL IS IN PROPER CONDITION TO RECEIVE THE PRODUCTS, SUPPLIES, MATERIALS, AND SERVICES

In consideration, the above-named Customer agrees: THIS CONTRACT MUST BE SIGNED BEFORE WORK IS COMMENCED

To pay Halliburton in accord with the rates and terms stated in Halliburton's current price list. Invoices are payable NET by the 20th of the following month after date of invoice. Upon Customer's default in payment of Customer's account by the last day of the month following the month in which the invoice is dated, Customer agrees to pay interest thereon after default at the highest lawful contract rate applicable, but never to exceed 18% per annum. In the event it becomes necessary to employ attorneys to enforce collection of said account, Customer agrees to pay all collection costs and attorney fees in the amount of 20% of the amount of the unpaid account.

To defend, indemnify, release and hold harmless Halliburton, its divisions, subsidiaries, parent and affiliated companies and the officers, directors, employees, agents and servants of all of them from and against any claims, liability, expenses, attorneys fees, and costs of defense to the extent permitted by law for:

1. Damage to property owned by, in the possession of, or leased by Customer, and/or the well owner (if different from Customer), including, but not limited to, surface and subsurface damage. The term "well owner" shall include working and royalty interest owners.
2. Reservoir, formation, or well loss or damage, subsurface trespass or any action in the nature thereof.
3. Personal injury or death or property damage (including, but not limited to, damage to the reservoir, formation or well), or any damages whatsoever, growing out of or in any way connected with or resulting from pollution, subsurface pressure, losing control of the well and/or a well blowout or the use of radioactive material.

The defense, indemnity, release and hold harmless obligations of Customer provided for in this Section b) and Section c) below shall apply to claims or liability even if caused or contributed to by Halliburton's negligence, strict liability or the unseaworthiness of any vessel owned, operated, or furnished by Halliburton or any defect in the data, products, supplies, materials, or equipment of Halliburton whether in the preparation, design, manufacture, distribution, or marketing thereof, or from a failure to warn any person of such defect. Such defense, indemnity, release and hold harmless obligations of Customer shall not apply where the claims or liability are caused by the gross negligence or willful misconduct of Halliburton. The term "Halliburton" as used in said Sections b) and c) shall include Halliburton, its divisions, subsidiaries, parent and affiliated companies, and the officers, directors, employees, agents and servants of all of them.

That because of the uncertainty of variable well conditions and the necessity of relying on facts and supporting services furnished by others, Halliburton is unable to guarantee the effectiveness of the products, supplies or materials, nor the results of any treatment or service, nor the accuracy of any chart interpretation, research analysis, job recommendation or other data furnished by Halliburton. Halliburton personnel will use their best efforts in gathering such information and their best judgment in interpreting it, but Customer agrees that Halliburton shall not be liable for and Customer shall indemnify Halliburton against any damages arising from the use of such information.

That Halliburton warrants only title to the products, supplies and materials and that the same are free from defects in workmanship and materials. THERE ARE NO WARRANTIES, EXPRESS OR IMPLIED, OF MERCHANTABILITY, FITNESS OR OTHERWISE WHICH EXTEND BEYOND THOSE STATED IN THE IMMEDIATELY PRECEDING SENTENCE. Halliburton's liability and Customer's obligations are limited to the extent of any cause of action (whether in contract, tort, breach of warranty or otherwise) arising out of the sale or use of any products, supplies or materials is expressly limited to the extent of such products, supplies or materials on their return to Halliburton or, at Halliburton's option, to the allowance to the Customer of credit for the cost of such items. In no event shall Halliburton be liable for special, incidental, indirect, punitive or consequential damages.

That Customer shall, at its risk and expense, attempt to recover any Halliburton equipment, tools or instruments which are lost in the well and if such equipment, tools or instruments are not recovered, Customer shall pay Halliburton its replacement cost unless such loss is due to the sole negligence of Halliburton. If Halliburton equipment, tools or instruments are damaged in the well, Customer shall pay Halliburton the lesser of its replacement cost or the cost of repairs unless such damage is caused by the sole negligence of Halliburton. In the case of equipment, tools or instruments for marine operations, Customer shall, in addition to the foregoing, be fully responsible for loss of or damage to any of Halliburton's equipment, tools or instruments which occurs at any time after delivery to Customer at the landing until returned to the landing, unless such loss or damage is caused by the sole negligence of Halliburton.

To waive the provisions of the Deceptive Trade Practices - Consumer Protection Act, to the extent permitted by law.

That this contract shall be governed by the law of the state where services are performed or materials are furnished.

That Halliburton shall not be bound by any changes or modifications in this contract, except where such change or modification is made in writing by a duly authorized executive officer of Halliburton.

I HAVE READ AND UNDERSTAND THIS CONTRACT AND REPRESENT THAT I AM AUTHORIZED TO SIGN THE SAME AS CUSTOMER'S AGENT

SIGNED Larry Marshall CUSTOMER

DATE _____

TIME _____ A.M. P.M.

RELEASED
 FEB 14 1995

CONFIDENTIAL

JOB SUMMARY

HALLIBURTON LOCATION

LIBERAL, KS

CONFIDENTIAL
BILLED ON TICKET NO. 251173

WELL DATA

LD _____ SEC _____ TWP _____ RNG _____ COUNTY **FINNEY** STATE **KS**

FORMATION NAME _____ TYPE _____

FORMATION THICKNESS _____ FROM _____ TO _____

STIAL PROD: OIL _____ BPD. WATER _____ BPD. GAS _____ MCFD

ESSENT PROD: OIL _____ BPD. WATER _____ BPD. GAS _____ MCFD

COMPLETION DATE _____ MUD TYPE _____ MUD WT. _____

SEALER TYPE _____ SET AT _____

BOTTOM HOLE TEMP. _____ PRESSURE _____

C. DATA _____ TOTAL DEPTH _____

JOB DATA

CALLED OUT	ON LOCATION	JOB STARTED	JOB COMPLETED
DATE 11-22-92	DATE 11-22-92	DATE 11-22-92	DATE 11-22-92
TIME 1245	TIME 1600	TIME 1840	TIME 2400

PERSONNEL AND SERVICE UNITS

NAME	UNIT NO. & TYPE	LOCATION
EBERSOLE	02673	40076 LIBERAL, KS
BROADBENT	52276-76900	11
CLINE	64372	52807-7620 HUGSTON, KS

TOOLS AND ACCESSORIES

TYPE AND SIZE	QTY.	MAKE
JAT COLLAR		
JAT SHOE		
DE SHOE		
TRIALIZERS		
ATOM PLUG		
PLUG		
ID		
SEKER		
SEKER		

MATERIALS

AT. FLUID _____ DENSITY _____ LB/GAL. API _____

PL. FLUID _____ DENSITY _____ LB/GAL. API _____

IP. TYPE _____ SIZE _____ LB _____

IP. TYPE _____ SIZE _____ LB _____

OP. TYPE _____ GAL _____ % _____

OP. TYPE _____ GAL _____ % _____

OP. TYPE _____ GAL _____ % _____

FACTANT TYPE _____ GAL _____ IN _____

AGENT TYPE _____ GAL _____ IN _____

ID LOSS ADD. TYPE _____ GAL-LB _____ IN _____

LING AGENT TYPE _____ GAL-LB _____ IN _____

RED. AGENT TYPE _____ GAL-LB _____ IN _____

SEKER TYPE _____ GAL-LB _____ IN _____

CKING AGENT TYPE _____ GAL-LB _____

FPAC BALLS TYPE _____ QTY. _____

DEPARTMENT CEMENT

DESCRIPTION OF JOB
 DTA - 100 SK @ 2975', 50 SK @ 1800', 50 SK @ 900', 10 SK @ 40', 10 SK in Mouse hole, 15 SK in RACHOPE

JOB DONE THRU: TUBING CASING ANNULUS TBG/ANN.

CUSTOMER REPRESENTATIVE: *Jay Marshall*

HALLIBURTON OPERATOR: **JOHN EBERSOLE**

COPIES REQUESTED _____

CEMENT DATA

PAGE	NUMBER OF SACKS	CEMENT	BRAND	BULK SACKED	ADDITIVES	YIELD CU.FT./SK.	MIXED LBS/GAL.
1	235	40/60 Poz (G.GEL)			RELEASED	1.57	13.37
					FEB 14 1995		
					FROM CONFIDENTIAL		

PRESSURES IN PSI

SUMMARY

VOLUMES

PULATING _____ DISPLACEMENT _____ PRESLUSH: BBL-GAL. _____ TYPE _____

ACKDOWN _____ MAXIMUM _____ LOAD & BKDN: BBL-GAL. _____ PAD: BBL-GAL. _____

RAGE _____ FRACTURE GRADIENT _____ TREATMENT: BBL-GAL. _____ DISPL: BBL-GAL. _____

T-IN: INSTANT _____ 5-MIN. _____ 15-MIN. _____ CEMENT SLURRY: BBL-GAL. _____

ERED _____ AVAILABLE _____ USED _____ TOTAL VOLUME: BBL-GAL. _____

AVERAGE RATES IN BPM _____

ATING _____ DISPL _____ OVERALL _____

CEMENT LEFT IN PIPE _____

REASON _____

ORIGINAL

REMARKS DEC 29

CONFIDENTIAL

CUSTOMER: **Bearde's Drilling**
 LEASE: **GARDEN Co.**
 WELL NO: **1-19**
 JOB TYPE: **DTA**
 DATE: **11-22-92**

JOB LOG

ORM 2013 R-2

WELL NO. 1-17 LEASE SHIRAZ 15-055-21160-0000 TICKET NO. 2511

CUSTOMER BEREDCO DRG. PAGE NO. 1

JOB TYPE PTA DATE 11-22-92

CONFIDENTIAL

CHART NO.	TIME	RATE (BPM)	VOLUME (BBL) (GAL)	PUMPS		PRESSURE (PSI)		DESCRIPTION OF OPERATION AND MATERIALS
				T	C	TUBING	CASING	
	1245							Called.
	1600							ON location - Rig Run in Δ P to 2975'
	1835							Hook up TRUCK
	1840	6	10			250		Pump 10 BBI H2O
	—	6	28			300		100SK 40/60 Poz (PREMIUM w/6% Gel)
	—	6	3 1/2			200		3 1/2 BBI H2O
	1847	6	31			150		31 BBI Mud Disp.
	1854					0		• Pull to 1800'
	1955	6	10			250		PUMP 10 BBI H2O
	—	6	14			250		50 SK CEMENT
	1959	6	3			150		3 BBI H2O
	—	6	19			100		19 BBI Mud Disp.
	2005					0		Pull to 900'
	2035	6	35			200		PUMP 35 BBI H2O
	—	6	14			150		50 SK CEMENT
	2043	6	9			50		9 BBI H2O Disp
	2045					0		Pull to SURFACE - Pull Rathole + BOP
	2345		10					Mix 35 SK CEMENT - Plug top 40'; MOUSE HOLE + Rathole
	2400							Job COMPLETE

RELEASED

FEB 14 1995

FROM CONFIDENTIAL

ORIGINAL

DEC 29

CONFIDENTIAL

15-055-21160-0000

CEMENTING SERVICE REPORT



DOWELL SCHLUMBERGER INCORPORATED

TREATMENT NUMBER 4873 DATE 11/13/92
 DISTRICT 103-12-UKA

DS-496 PRINTED IN U.S.A.

WELL NAME AND NO. Candace LOCATION (LEGAL) Sec. 19-22s-33w RIG NAME: Beredco #2
 FIELD-POOL Hugoton FORMATION Surface WELL DATA: BIT SIZE 12 1/4 CSG/Liner Size 8 3/8
 COUNTY/PARISH Finney STATE Ks. API. NO. 4 TOTAL DEPTH 1797 WEIGHT 24
 NAME Beredco Well Full ROT CABLE FOOTAGE 1797 GRADE
 AND Well Full MUD TYPE GRADE
 ADDRESS Well Full BHST BHCT THREAD 3rd. MUD DENSITY 4.3 LESS FOOTAGE SHOE JOINT(S) TOTAL
 MUD VISC. 1742 Disp. Capacity 1742

SPECIAL INSTRUCTIONS: Provide materials and services to safely cnt. 8 3/8 surface casing.
 IS CASING/TUBING SECURED? YES NO
 LIFT PRESSURE 733 PSI CASING WEIGHT + SURFACE AREA (3.14 x R²)
 PRESSURE LIMIT 1080 PSI BUMP PLUG TO 1080 PSI
 ROTATE RPM RECIPROCATATE FT No. of Centralizers 3

TIME	PRESSURE		VOLUME PUMPED bbl		JOB SCHEDULED FOR			ARRIVE ON LOCATION		LEFT LOCATION	
	TBG OR D.P.	CASING	INCREMENT	CUM	TIME	DATE	TIME	DATE	TIME	DATE	
0001 to 2400											
08:54	1800	-	1	-	1	H ₂ O	8.32	PRE-JOB SAFETY MEETING PSI Test Lines			
08:58	250	250	3	-	7.7	H ₂ O	8.32	Start H ₂ O Ahead			
08:58		300	224	-	8.2	Cmt.	12.2	Start Lead Cmt.			
09:27		360	35	-	8	Cmt.	14.8	Start Tail Cmt.			
09:32								Shutdown - Drop Plug			
09:34		40	114	-	6.9	H ₂ O	8.32	Start Displacement			
09:49		510	100	-	2.2			Lower Rate			
09:53		1080	114	-	2.2			Bump Plug			
09:53								Release Psi - Check Float			
09:54								End Job			
9:45 RELEASED											
FEB 14 1995											
FROM CONFIDENTIAL											
CONFIDENTIAL											
ORIGINAL											

REMARKS: 225 sks. Returned to pit

SYSTEM CODE	NO. OF SACKS	YIELD CU. FT/SK	COMPOSITION OF CEMENTING SYSTEMS				SLURRY MIXED	
							BBLs	DENSITY
1.	600	2.1	65% Spoz + 6% D20 + 29% S1 + 1/4 #32 D2S				224	12.2
2.								
3.	150	1.32	Class "C" Cmt. + 28% S1 + 1/4 #32 D2S				35	14.8
4.								
5.								
6.								

BREAKDOWN FLUID TYPE: HESITATION SQ. RUNNING SQ. CIRCULATION LOST YES NO
 PRESSURE: MAX. 1000 MIN. 0
 Cement Circulated To Surf. YES NO 84 Bbls.
 BREAKDOWN: PSI FINAL PSI DISPLACEMENT VOL. 116.8 Bbls
 TYPE OF WELL: OIL GAS STORAGE INJECTION BRINE WATER WILDCAT
 Washed Thru Peris YES NO TO FT. MEASURED DISPLACEMENT WIRELINE
 PERFORATIONS: TO TO TO TO
 CUSTOMER REPRESENTATIVE: Gary Marshall DS SUPERVISOR: Spencer Ridgway

DOWELL SCHLUMBERGER INCORPORATED
 P.O. BOX 4378 HOUSTON, TEXAS 77210

CUSTOMER

CONFIDENTIAL
 OILFIELD SERVICES
 INDUSTRIAL SERVICES

DSI SERVICE ORDER
 RECEIPT AND INVOICE NO.
 03-12-4873

15-055-21160-0000

DSI SERVICE LOCATION NAME AND NUMBER

03-12 UKS

CUSTOMER NUMBER CUSTOMER P.O. NUMBER TYPE SERVICE CODE BUSINESS CODES

CUSTOMER'S NAME: Beredka Full
 ADDRESS: W. Full
 CITY, STATE AND ZIP CODE:

WORKOVER NEW WELL OTHER W N API OR IC NUMBER

ARRIVE LOCATION MO. DAY YR. TIME
 11 13 92

SERVICE ORDER RECEIPT
 I certify that the materials and services listed were authorized and received and all services performed in a workmanlike manner and that I have the authority to accept and execute this document.

DSI will furnish and Customer shall purchase materials and services required in the performance of the following SERVICE INSTRUCTIONS or DSI INDUSTRIAL SERVICE CONTRACT NO. in accordance with the terms and conditions as printed on the reverse side of this form.

600 sks. 3/65 $\frac{1}{2}$ + 6% D20 + 29% S1 + $\frac{1}{4}$ # Sk D29
 150 sks. Class "C" + 29% S1 + $\frac{1}{4}$ # Sk D29

JOB COMPLETION MO. DAY YR. TIME
 11 14 92

SIGNATURE OF CUSTOMER OR AUTHORIZED REPRESENTATIVE
Shirley Marshall

STATE CODE COUNTY/PARISH CODE CITY
 KS. Finney

WELL NAME AND NUMBER / JOB SITE LOCATION AND POOL / PLANT ADDRESS SHIPPED VIA
 Gardencro Sec. 19-225-33W D.S.

ITEM/PRICE REF. NO.	MATERIAL, EQUIPMENT AND SERVICES USED	UNIT	QUANTITY	UNIT PRICE	\$ AMOUNT
102871-020	Ramp Trk. Chg.	Eg.	1	1100.00	1100.00
47102-000	Delivery Chg.	35+ T.M.	875	.88	770.00
47100-000	Service Chg.	F ³	829	1.20	994.80
48600-000	Cnt. Head Rental	Eg.	1	63.00	N/C
55697-000	PACR Chg.	Eg.	1	140.00	140.00
59200-002	Mikage	Mi.	25	2.65	66.25
40003-000	D903 Class "C" Cmt.	Sk.	540	7.98	4309.20
45008-000	0.35 L ₂ Poz. III	Sk.	210	3.94	827.40
45014-050	D20 Gen.	Lbs.	3132	.15	469.80
47005-100	S1 Gals	Lbs.	1326	.36	477.36
44003-025	D29 Cellulose Flake	Lbs.	188	1.59	298.92
50101-085	8 $\frac{1}{2}$ " Cnt. Nose Guide Shoe	Eg.	1	250.00	250.00
53003-085	8 $\frac{1}{2}$ " Insert Float Valve	Eg.	1	330.00	330.00
52011-085	8 $\frac{1}{2}$ " Cent. Mixers	Eg.	3	74.00	222.00
52704-085	8 $\frac{1}{2}$ " Top Rubber Plug	Eg.	1	155.00	155.00
52705-085	K232 Thread Lock Kit	Eg.	1	25.00	25.00
48020-000	Additional Hrs. Cnt. Pump	Hrs.	40	195.00	780.00

RELEASED

FEB 14 1995

FROM CONFIDENTIAL

Field Estimate \$ 11,190.73

SUB TOTAL

DEC 29

LICENSE/REIMBURSEMENT FEE

REMARKS: Thank you for using Dowell Schlumberger!
 STATE COUNTY CITY % TAX ON \$
 SIGNATURE OF DSI REPRESENTATIVE: Shirley Marshall TOTAL \$

CONFIDENTIAL