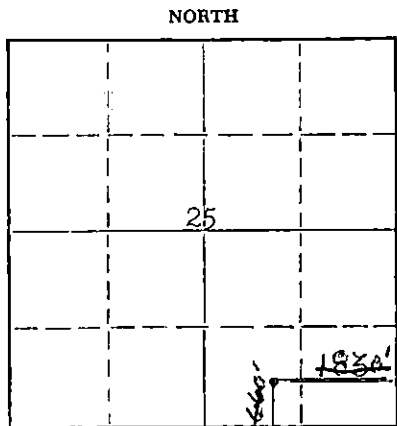


WELL PLUGGING RECORD

Give All Information Completely
Make Required Affidavit
Mail or Deliver Report to:
Conservation Division
State Corporation Commission
211 No. Broadway
Wichita, Kansas

Seward County, Sec. 25 Twp. 34S Rge. XXXXX (E) 31 (W)



Location as "NE/CNW*SW*" or footage from lines C SW/4 SE/4
Lease Owner Petroleum, Inc.
Lease Name Adams "O" (Wash-down) Well No. 1
Office Address P.O. Box 1255, Liberal, Kansas
Character of Well (completed as Oil, Gas or Dry Hole) Unsuccessful wash-down.
Date well completed July 3 19 67
Application for plugging filed July 10 19 67
Application for plugging approved July 10 19 67
Plugging commenced July 3 19 67
Plugging completed July 3 19 67
Reason for abandonment of well or producing formation Unsuccessful wash-down.
If a producing well is abandoned, date of last production 19
Was permission obtained from the Conservation Division or its agents before plugging was commenced? Edgar Eves

Name of Conservation Agent who supervised plugging of this well
Producing formation NONE Depth to top Bottom Total Depth of Well 610' Feet
Show depth and thickness of all water, oil and gas formations.

OIL, GAS OR WATER RECORDS

CASING RECORD

FORMATION	CONTENT	FROM	TO	SIZE	PUT IN	PULLED OUT
NONE				20"	61'	NONE

Describe in detail the manner in which the well was plugged, indicating where the mud fluid was placed and the method or methods used in introducing it into the hole. If cement or other plugs were used, state the character of same and depth placed, from feet to feet for each plug set.

Plugged w/250 sacks with top @ 531'. Rubber plug @ 530', 25 sacks cement to 500'. Rubber plug @ 499', 35 sacks cement to 460'. Fresh water to 37', 30 sacks cement to surface. Welded steel cap on surface pipe. 2 sacks cement in rat hole and 2 sacks cement in mouse hole.

RECEIVED
STATE CORPORATION COMMISSION
JUL 14 1967
CONSERVATION DIVISION
WICHITA, KANSAS

(If additional description is necessary, use BACK of this sheet)
Name of Plugging Contractor Garvey Drilling Co.
Address R.R. #2, Great Bend, Kansas

STATE OF Kansas, COUNTY OF Seward, ss.
Ned E. Lowry (employee of owner) or (owner or operator) of the above-described well, being first duly sworn on oath, says: That I have knowledge of the facts, statements, and matters herein contained and the log of the above-described well as filed and that the same are true and correct. So help me God.

(Signature) Ned E Lowry
P.O. Box 1255, Liberal, Kansas
(Address)

SUBSCRIBED AND SWORN TO before me this 13th day of July, 19 67
James R. Hatfield
Notary Public.

My commission expires September 19, 1970