

15-047-21332-0000

NP 88935

09-1-89 N-1

STATE OF KANSAS - CORPORATION COMMISSION
PRODUCTION TEST & GOR REPORT

Form C-5 Revised

Conservation Division

TYPE TEST: (Initial) Annual Workover Reclassification TEST DATE: 9-13-14-89
Company F.G. Holl Estate Lease Britton Well No. 1-16

County Edwards Location C W/2 W/2 SW Section 16 Township 24S Range 17W Acres 640

Field *Britton* Reservoir Mississippi Pipeline Connection *Permian*

Completion Date 4-7-89 Type Completion (Describe) Trace Plug Back T.D. *4478'* Packer Set At

Production Method: *(Pumping)* Type Fluid Production *Oil + wt.* API Gravity of Liquid/Oil *37*

Flowing Casing Size 4 1/2" Weight 10.5# I.D. Set At 4523' Perforations 4364 To 4384'

Tubing Size 2 3/8" Weight I.D. Set At 4411' Perforations To

Pretest: Starting Date Time Ending Date Time Duration Hrs.

Test: Starting Date 9-13-89 Time 9:30 A.M. Ending Date 9-14-89 Time 9:30 A.M. Duration Hrs. 24

OIL PRODUCTION OBSERVED DATA

Producing Wellhead Pressure		Separator Pressure		Choke Size					
Casing: 28"	Tubing: 28"	Heater Treater = 28"							
Bbls./In.	Tank	Starting Gauge		Ending Gauge		Net Prod. Bbls.			
	Size Number	Feet	Inches	Barrels	Feet	Inches	Barrels	Water	Oil
Pretest:									
Test:	250	99947	2' 7"	51.69	3' 6"	70.02	15.03	18.33	
Test:	"	"							

GAS PRODUCTION OBSERVED DATA

Orifice Meter Connections			Orifice Meter Range			RECEIVED		
Pipe Taps:	Flange Taps:	Differential:	STATE CORP. Static Pressure:					
Measuring Device	Run-Prover-Tester Size	Orifice Size	Meter-Prover In. Water	Tester Pressure In. Merc.	Pressure Psig or (Pd)	Diff. Press. (hw) Sp (hd) P	Gravity Gas (Gg)	Flowing Temp. (t)
Orifice Meter								
Critical Flow Prover								
Orifice (Merla) Well Tester	2"	1/2"			4"			

GAS FLOW RATE CALCULATIONS (R)

Coeff. (Fb)	MCFD (Fp)	Meter-Prover Press. (Pm)	Extension √hw x Pm	Gravity Factor (Fg)	Flowing Temp. Factor (Ft)	Deviation Factor (Fpv)	Chart Factor (Fd)

Gas Prod. MCFD Flow Rate (R): 68.8 Oil Prod. Bbls./Day: 18.33 Gas/Oil Ratio (GOR) = 3.75 Cubic Ft. per Bbl.

The undersigned authority, on behalf of the Company, states that he is duly authorized to make the above report and that he has knowledge of the facts stated therein, and that said report is true and correct. Executed this the 14th day of September 1989

For Offset Operator *Stephen J. Pfeifer* For State For Company *Ray O. Johnson*

STATE CORPORATION COMMISSION OF KANSAS, CONSERVATION DIVISION

PRODUCTIVITY TEST
BARREL TEST

OPERATOR _____ LOCATION OF WELL _____

LEASE _____ OF SEC. T R _____

WELL NO. _____ COUNTY _____

FIELD _____ PRODUCING FORMATION _____

Date Taken _____ Date Effective 09-1-89

Well Depth _____ Top Prod. Form _____ Perfs _____

Casing: Size _____ Wt. _____ Depth _____ Acid _____

Tubing: Size _____ Depth of Perfs _____ Gravity _____

Pump: Type _____ Bore _____ Purchaser _____

Well Status _____

Pumping, flowing, etc.

TEST DATA

Permanent _____ Field _____ Special _____

Flowing _____ Swabbing _____ Pumping _____

STATUS BEFORE TEST:

PRODUCED _____ HOURS

SHUT IN _____ HOURS

DURATION OF TEST _____ HOURS _____ MINUTES _____ SECONDS

GAUGES: WATER _____ INCHES _____ PERCENTAGE

OIL _____ INCHES _____ PERCENTAGE

GROSS FLUID PRODUCTION RATE (BARRELS PER DAY) _____

WATER PRODUCTION RATE (BARRELS PER DAY) _____

OIL PRODUCTION RATE (BARRELS PER DAY) _____ PRODUCTIVITY

STROKES PER MINUTE _____

LENGTH OF STROKE _____ INCHES

REGULAR PRODUCING SCHEDULE _____ HOURS PER DAY.

COMMENTS _____

WITNESSES:

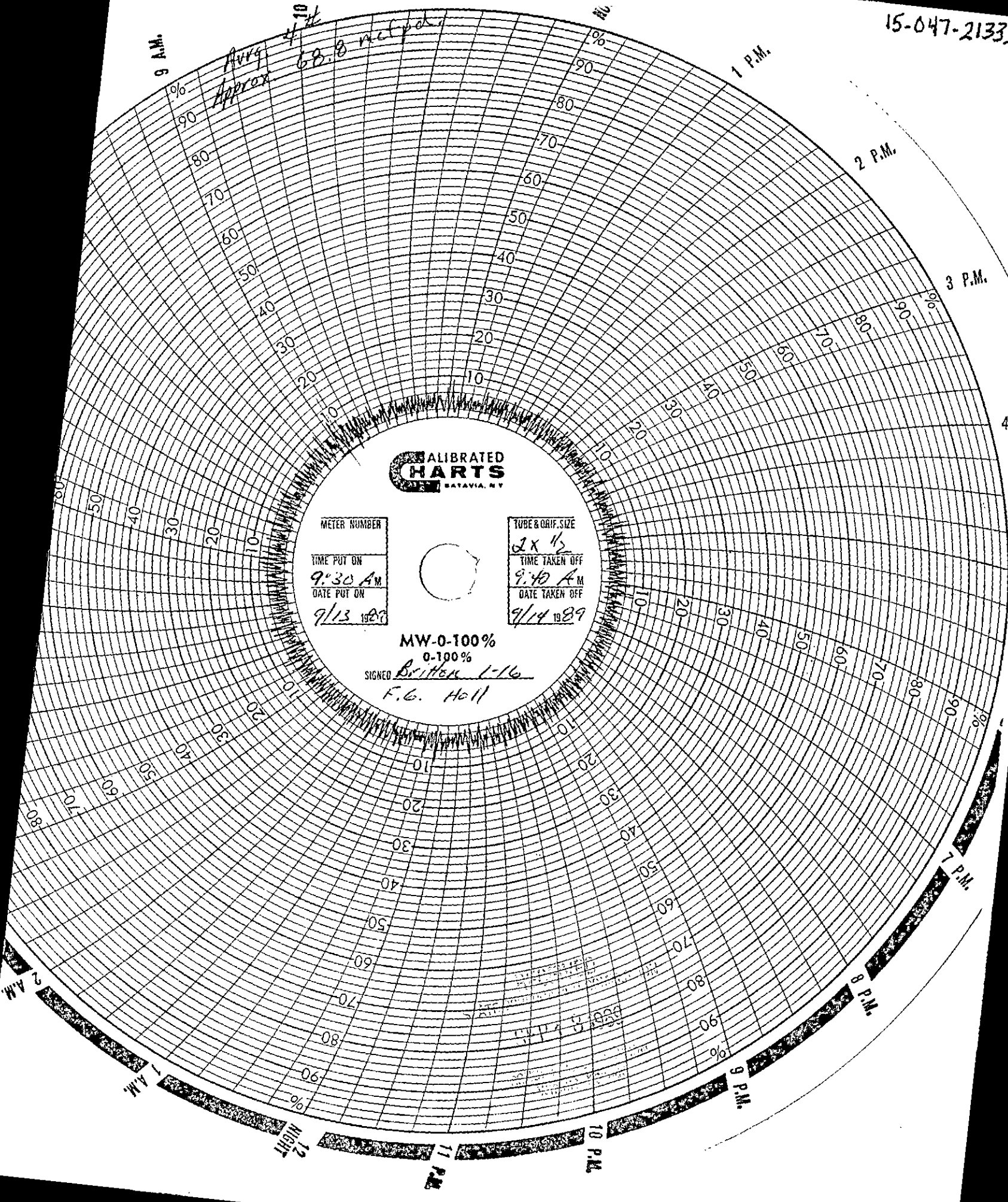
FOR STATE

FOR OPERATOR

FOR OFFSET

15-047-21332-0000

9 AM
4:10 AM
Avg
Approx
68.8 mcf per hr



**CALIBRATED
CHARTS**
BATAVIA, N.Y.

METER NUMBER

TUBE & ORIF. SIZE

TIME PUT ON

TIME TAKEN OFF

9:30 AM

9:40 AM

DATE PUT ON

DATE TAKEN OFF

9/13 1989

9/14 1989

MW-0-100%

0-100%

SIGNED Britten 1-16

F.G. Hall

12 NIGHT
11 P.M.
10 P.M.
9 P.M.
8 P.M.
7 P.M.
6 P.M.
5 P.M.
4 P.M.
3 P.M.
2 P.M.
1 P.M.